

## HECTA SEA — LUHRS



**Builder:** LUHRS

**Year Built:** 2000

**Model:** Sport Fisherman

**Price:** PRICE ON APPLICATION

**Location:** United States

**LOA:** 34' 0" (10.36m)

**Beam:** 13' 8" (4.17m)

**Cruise Speed:** 20 Kts. (23 MPH)

**Max Speed:** 23 Kts. (26 MPH)

Our experienced yacht broker, Andrey Shestakov, will help you choose and buy a yacht that best suits your needs **HECTA SEA — LUHRS** from our catalogue. Presently, at Shestakov Yacht Sales Inc., we have a wide variety of yachts available on our sale's list. We also work in close contact with all the big yacht manufacturers from all over the world.

If you would like to buy a yacht **HECTA SEA — LUHRS** or would like help answering any questions concerning purchasing, selling or chartering a yacht, please call **+1(954)274-4435**

# TABLE OF CONTENTS

---

TABLE OF CONTENTS	2
SPECIFICATIONS	4
Overview	4
Basic Information	4
Dimensions	4
Speed, Capacities and Weight	4
Accommodations	5
Hull and Deck Information	5
Engine Information	5
DETAILED INFORMATION	6
Accommodations	6
Exclusions	9
Disclaimer	9
PHOTOS	10
Bow	10
Bait Well	10
Cockpit	10
Fresh & Salt Water	11
Cockpit	11
Flybridge Helm	11
Salon Aft Stb	11
Salon Forward	11
Salon Aft	11
Salon	12
Flay Screen TV	12
Electrical Panel	12
Forward Stateroom	12
Galley	12

---

Hanging Locker	13
Head	13
Equipment under stairs	13
Engine Room Port	13
Generator	13
Engine Room Starboard	13
Engine Room	14
<b>CONTACTS</b>	<b>16</b>
Contact details	16
Telephones	16
Office hours	16
Address	16

---

# SPECIFICATIONS

---

## Overview

---

HECTA SEA is fast, efficient and a fun boat to run. She has a pleasing comfortable interior that packs a lot in a 34' size. Very clean and well kept interior. She's a great smaller fish boat fully equipped to do so from her fish and bait wells to her Rupp outriggers. Priced to sell.

\* New Gauges 2015 \* New VHF radio 2015 \* Boat recaulked 2015 \* New bottom paint 8/14 \* Hull compounded, waxed & buffed 8/14 \* Complete compound, waxed and buffed above rub rail, shines like a new boat! 10/14 \* New air-conditioner unit 11/14

## Basic Information

---

**Category:** Sport Fisherman

**Sub Category:** Convertible

**Model Year:** 2000

**Year Built:** 2000

**Country:** United States

## Dimensions

---

**LOA:** 34' 0" (10.36m)

**Beam:** 13' 8" (4.17m)

**Clearance:** 16' 3" (4.95m)

## Speed, Capacities and Weight

---

**Cruise Speed:** 20 Kts. (23 MPH)

**Max Speed:** 23 Kts. (26 MPH)

**Displacement:** 20000 Pounds

**Water Capacity:** 90 Gallons

**Holding Tank:** 30 Gallons

**Fuel Capacity:** 300 Gallons

---

## Accommodations

---

**Total Cabins:** 1

---

## Hull and Deck Information

---

**Hull Material:** Fiberglass

---

## Engine Information

---

**Manufacturer:** Yanmar

**Engine Type:** Inboard

**Fuel Type:** Diesel

---

# DETAILED INFORMATION

---

## Accommodations

---

### Walkthrough

The salon is entered through the aft door from the cockpit. The salon is quite spacious for her size with two facing settees, a movable dining table with fold-out leaves and a straight line galley.

Down four steps just off the companionway is the split head with shower on port and head on STBD.

The stateroom is forward with an offset berth. There is ample drawer storage under the berth

### Salon

- Dining table with lift-up leaves – movable
- Bound carpet
- (2) large windows fixed on each side, (1) window fixed aft
- Sliding door with window
- Magnavox flat screen TV & DVD player
- JVC VHS player
- JVC stereo receiver – w/12 disc JVC CD changer
- (2) speakers salon –(2) in cockpit
- Clock and barometer
- Golden ash interior
- Gray mini-blinds
- Overhead dropdown rod storage compartment
- Curved grey Ultraleather settee on port w/storage under
- Settee that converts to double berth w/storage under and lift-up single berth
- 12v and 110v breaker panel
- Globestar SAT phone - not connected

### Galley

- Corian countertop and backsplash
- Stainless steel sink – double
- Stainless steel faucet
- (2) burner Princess cooktop
- GE microwave
- Nova Kool refrigerator
- U-Line icemaker
- Black & Decker built-in coffee maker
- (4) large drawers

- (1) slid out pantry
- (4) overhead storage cabinets
- Halogen overhead lights

## Head

- Stainless steel sink
- Corian Countertop
- Vacuflush fresh water head
- Storage cabinets
- Tankwatch - holding tank level indicator

## Shower

- Large shower with stainless steel sink and Corian counter
- Shower curtain
- Hand held shower faucet

## Stateroom

- Audiovox TV
- Audiovox VHS player
- JVC stereo receiver / CD / with 2 speakers
- Offset double berth
- Marineair air-conditioning w/reverse cycle heat
- Halogen overhead lighting
- Hanging locker w/cedar lining
- Storage cabinet
- (3) drawers under berth
- Framed mirror
- Overhead hatch that opens

## Electronics/Flybridge

- Furuno Navnet C-Map NT GPS/Depth/72 mile radar
- Open array 72 mile radar antennae
- Raymarine autopilot ST6001+
- Icom VHF radio and mic - controls on mic also
- Clarion Stereo w/SAT Sirius connection & antennae
- Single CD player
- (2) stereo speakers Flybridge - (2) speakers in Cockpit
- Bennett trim tabs
- Gauges for RPM, Temp, Oil Pressure, Trans. Oil Pressure
- Twin gear and throttle controls
- Windlass control
- Ritchie Compass

- (2) pedestal helm chairs
- Forward facing bench seat w/storage
- Molded in steps from cockpit to bridge – very easy access - NO LADDER
- Top replaced 2013 - Custom T Top Weblon (material) laced
- (7) Rod holders

## Deck

- Fresh & saltwater washdown connections
- Live well and fresh water sprayer
- Shore water connection
- Fish well on transom
- Transom door
- Swimplatform
- Fresh and salt water faucets
- Tackle box
- Spare props
- Ice box - has electric freezer controls but not working
- Cable TV and phone connection
- Newmar windlass
- Delta anchor w/chain and rode
- Custom rocket launchers
- Custom rod holders (3) on each side
- Rupp outriggers
- Center rigger
- Electric reel connections, port & starboard

## Engines

- Twin Yanmar 315 hp w 1505 hours as of 8/2014
- Port engine replaced, Starboard engine rebuilt
- 8 kw Kohler generator
- Racor fuel filters with gauges
- Engine fuel shut-off valve
- (3) automatic bilge pumps
- Halon fire extinguishing system
- Acoustical thermal insulation
- 2" high water pump and alarm
- Oil change system
- Dripless shaft logs
- Mastervolt battery charger 12/40-3
- 50 amp power service
- (3) batteries - new

## Remarks



---

HECTA SEA is fast, efficient and a fun boat to run. She has a pleasing comfortable interior that packs a lot in a 34' size. Very clean and well kept interior. She's a great smaller fish boat fully equipped to do so from her fish and bait wells to her Rupp outriggers.

- \* New gauges 2015
- \* New VHF radio 2015
- \* Boat recaulked 2015
- \* New Windlass motor/anchor/chain
- \* New bottom paint 8/14
- \* Hull compounded, waxed & buffed 8/14
- \* Complete compound, waxed and buffed above rub rail, shines like a new boat! 10/14
- \* New air-conditioner unit 11/14

## Exclusions

---

Owner's personal belongings.

## Disclaimer

---

The Company offers the details of this vessel or yacht in good faith but cannot guarantee or warrant the accuracy of this information nor warrant the condition of the vessel. A buyer should instruct his representatives, agents, or his surveyors, to investigate such details as the buyer desires validated. This vessel or yacht is offered subject to prior sale, price change, or withdrawal without notice.

# PHOTOS

**Bow**



**Bait Well**



**Cockpit**



**Fresh & Salt Water**



**Cockpit**



**Flybridge Helm**



**Salon Aft Stb**



**Salon Forward**



**Salon Aft**



**Salon**



**Flay Screen TV**



**Electrical Panel**



**Forward Stateroom**



**Galley**



**Hanging Locker**



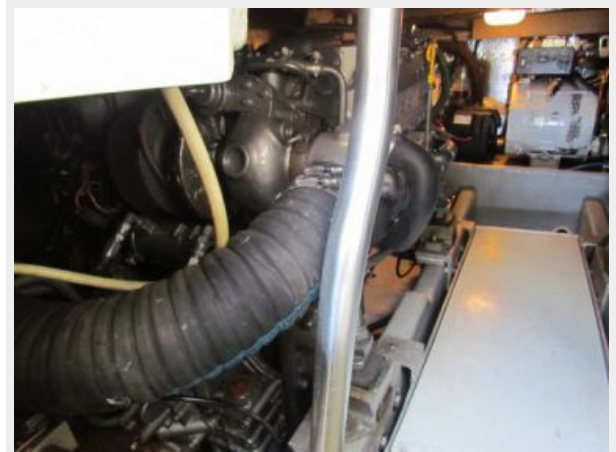
**Head**



**Equipment under stairs**



**Engine Room Port**



**Generator**



**Engine Room Starboard**



## Engine Room





# CONTACTS

---

Andrey Shestakov, leading yacht broker of the sales department of Shestakov Yacht Sales Inc. Shestakov Yacht Sales Inc., the official representative of the Miami/Fort Lauderdale FL headquarters.

## Contact details

---

Email: [andrey@shestakovyachtsales.com](mailto:andrey@shestakovyachtsales.com)

Web: [shestakovyachtsales.com/en/](http://shestakovyachtsales.com/en/)

## Telephones

---

USA: +1(954)274-4435

## Office hours

---

Monday – Saturday: **9:00 - 21:00** EDT

Sunday: **closed**

## Address

---



Harbour Towne Marina, 850 NE 3rd St,  
STE 213, Dania, FL 33004