

BIG BERTHA — CABO



Builder: CABO

Year Built: 1997

Model: Sport Fisherman

Price: PRICE ON APPLICATION

Location: Mexico

LOA: 35' 0" (10.67m)

Beam: 13' 0" (3.96m)

Max Draft: 2' 10" (0.86m)

Cruise Speed: 29 Kts. (33 MPH)

Max Speed: 33 Kts. (38 MPH)

Our experienced yacht broker, Andrey Shestakov, will help you choose and buy a yacht that best suits your needs **BIG BERTHA — CABO** from our catalogue. Presently, at Shestakov Yacht Sales Inc., we have a wide variety of yachts available on our sale's list. We also work in close contact with all the big yacht manufacturers from all over the world.

If you would like to buy a yacht **BIG BERTHA — CABO** or would like help answering any questions concerning purchasing, selling or chartering a yacht, please call **+1(954)274-4435**

TABLE OF CONTENTS

TABLE OF CONTENTS	2
SPECIFICATIONS	3
Overview	3
Basic Information	3
Dimensions	3
Speed, Capacities and Weight	3
Accommodations	3
Hull and Deck Information	4
Engine Information	4
DETAILED INFORMATION	5
Full Specifications	5
Exclusions	7
Disclaimer	8
PHOTOS	9
CONTACTS	14
Contact details	14
Telephones	14
Office hours	14
Address	14

SPECIFICATIONS

Overview

Custom tower, Cleaned every week, turn key, built for the president of Callaway golf.

Basic Information

Category: Sport Fisherman

Sub Category: Express

Model Year: 1997

Year Built: 1997

Country: Mexico

Vessel Top: Open W/Tower

Cockpit: Yes

Dimensions

LOA: 35' 0" (10.67m)

LOD: 34' 6" (10.52m)

Beam: 13' 0" (3.96m)

Max Draft: 2' 10" (0.86m)

Speed, Capacities and Weight

Cruise Speed: 29 Kts. (33 MPH)

Max Speed: 33 Kts. (38 MPH)

Displacement: 24000 Pounds

Water Capacity: 80 Gallons

Holding Tank: 22 Gallons

Fuel Capacity: 400 Gallons

Accommodations

Total Cabins: 1

Sleeps: 4

Total Heads: 1

Hull and Deck Information

Hull Material: Fiberglass

Hull Color: White

Engine Information

Engines: 2

Manufacturer: Caterpillar

Model: 3208

Engine Type: Inboard

Fuel Type: Diesel

DETAILED INFORMATION

Full Specifications

OVERVIEW

BIG BERTHA a 35 ft CABO express with a full Pacific Tower's Tuna Tower. The original owner was President of Callaway Golf and the mechanical designer for the Callaway Big Bertha driver, thus the name. They have owned the boat for approximately 6 years and continue to use it primarily as a cruiser and fisher. The vessel is professionally maintained and turnkey ready for use.

The vessel sleeps 4 with a forward offset V Berth, and saloon seating converts into over/under sleeping bunks. Well-designed Galley and head with shower. Reverse cycle heating and air conditioning. Rod storage lockers for approximately 16 fishing rods/reels with additional 6 rod vertical storage in the head. Teak and Holly wood flooring.

GALLEY

- Galley sink
- Single burner electric stove
- Sharp carousel microwave/convection oven
- Vitrefrigo refrigerator

ELECTRONICS

- Raymarine E80 GPS and chart plotter
- (2) Tachometers
- Furuno radar open array 48 mile
- Robertson AP300x autopilot
- ICOM IC-M126 DSC VHF
- Raytheon 430 hailer
- Ritchi power amp compass
- ICOM IC_M59 VHF
- Robertson autopilot AP300X
- Furuno T-2000 seawater temperature

- Echo Tec 212 CS color sounder
- Taiyo TD-L1550 ADF
- Tank Watch
- Engine alarms
- Sony CD stereo

ELECTRICAL SYSTEM

- 110/220 VAC
- 12 VDC
- Generator: 5 kW Westerbeke, 834 hours
- (4) Batteries
- (2) 30A/125V shore power inlets
- (4) Battery switches in engine room
- GFCI outlets
- Xantrex True Charge 40+ battery charger

MECHANICAL EQUIPMENT

- Transmission: Twin Disc MG 507 – 1, 1.51:1 ratio
- CruisAir air conditioner
- Hynautic hydraulic engine controls
- Wet exhaust system
- Bronze shaft seals
- 23 x 24 three blade bronze propellers
- Hynautic hydraulic steering
- (3) Rule bilge pumps
- Racor fuel filters
- X-change-R oil change system
- Seaward SL200R water heater
- Water pressure pump
- Hydraulic engine hatch lifts
- Engine room lights
- Vacuflush heads

DECK EQUIPMENT

- Delta anchor
- Lewmar electric windlass (bow and helm switches)
- Chain
- Fish box macerato pumps
- Freshwater cockpit spigot
- Transom door
- Swim platform
- Tuna tower with helm, seat and shade
- Double spreader outriggers
- Bow pulpit with anchor roller
- Rub rail
- Cockpit sink
- Cockpit freezer
- Tackle box
- (3) Windsheild wipers

SAFETY AND FIRE PROTECTION

- Disposable fire extinguisher
- (1) Dry Chemical extinguisher (1999)
- Fireboy fixed fire system (not current)
- Horseshoe Buoy
- Type IV throwable cushion
- (5) Type II
- Flares
- Air horn
- Sidelights
- Stern lights
- Anchor light
- Switlik 6-person MD-2 life raft (needs inspections)
- 406 mHz EPIRB
- Spotlight

REMARKS

Custom tower, Cleaned every week, turn key, build for the president of Callaway golf.

Exclusions

Owner's personal belongings.

Disclaimer

The Company offers the details of this vessel or yacht in good faith but cannot guarantee or warrant the accuracy of this information nor warrant the condition of the vessel. A buyer should instruct his representatives, agents, or his surveyors, to investigate such details as the buyer desires validated. This vessel or yacht is offered subject to prior sale, price change, or withdrawal without notice.

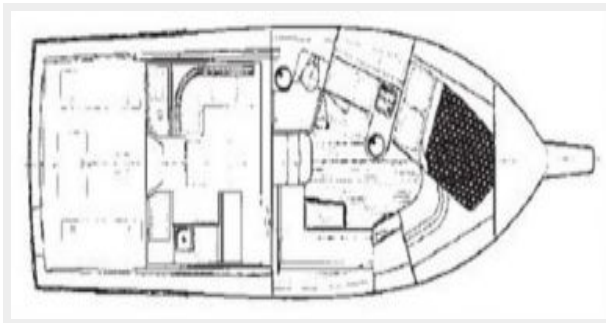
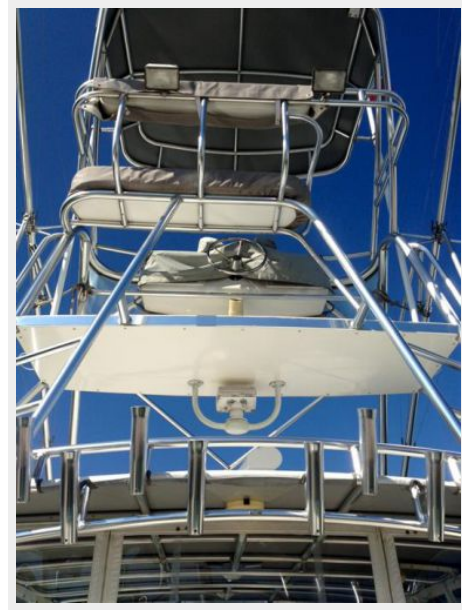
PHOTOS











RPM	SPEED - FUEL					
	KNOTS - TOTAL GALLONS					
	NO TABS			FULL TABS		
	KNOTS	FUEL USED / GAL	KNOTS / GAL	KNOTS	FUEL USED / GAL	KNOTS / GAL
1000	7.75	4.50	n/a	7.75	4.50	n/a
1200	8.75	7.50	1.16	8.80	7.50	1.17
1400	9.85	11.75	0.84	9.85	11.75	0.84
1600	11.00	17.50	0.63	11.60	16.50	0.70
1800	15.00	23.00	0.65	15.90	22.00	0.72
2000	19.50	26.75	0.73	20.25	26.75	0.75
2200	23.25	30.50	0.76	23.25	31.50	0.69
2300	24.50	32.50	0.75	24.50	33.50	0.73
2400	25.75	33.50	0.77	25.10	37.00	0.68
2500	27.00	36.50	0.74	26.40	38.50	0.68
2600	28.00	40.00	0.70	27.50	42.00	0.65
MAX	30.75	46.00	0.67	29.25	47.00	0.62

CONTACTS

Andrey Shestakov, leading yacht broker of the sales department of Shestakov Yacht Sales Inc. Shestakov Yacht Sales Inc., the official representative of the Miami/Fort Lauderdale FL headquarters.

Contact details

Email: andrey@shestakovyachtsales.com

Web: shestakovyachtsales.com/en/

Telephones

USA: +1(954)274-4435

Office hours

Monday – Saturday: **9:00 - 21:00** EDT

Sunday: **closed**

Address



Harbour Towne Marina, 850 NE 3rd St,
STE 213, Dania, FL 33004