

## GONE — SYMBOL



**Builder:** SYMBOL

**Year Built:** 2010

**Model:** Motor Yacht

**Price:** PRICE ON APPLICATION

**Location:** United States

**LOA:** 60' 0" (18.29m)

**Beam:** 16' 4" (4.98m)

**Max Draft:** 4' 6" (1.37m)

**Cruise Speed:** 10 Kts. (12 MPH)

**Max Speed:** 18 Kts. (21 MPH)

Our experienced yacht broker, Andrey Shestakov, will help you choose and buy a yacht that best suits your needs **GONE — SYMBOL** from our catalogue. Presently, at Shestakov Yacht Sales Inc., we have a wide variety of yachts available on our sale's list. We also work in close contact with all the big yacht manufacturers from all over the world.

If you would like to buy a yacht **GONE — SYMBOL** or would like help answering any questions concerning purchasing, selling or chartering a yacht, please call **+1(954)274-4435**

# TABLE OF CONTENTS

TABLE OF CONTENTS	2
SPECIFICATIONS	5
Overview	5
Basic Information	5
Dimensions	5
Speed, Capacities and Weight	6
Accommodations	6
Hull and Deck Information	6
Engine Information	6
DETAILED INFORMATION	7
Broker Comments	7
Salon	7
Galley	8
Master Stateroom	8
Head & Ammenities	8
Guest Stateroom Forward	9
Guest Stateroom Aft	9
Pilothouse	9
Fly Bridge	10
Electrical System	10
Cockpit	11
Deck Equipment	12
Hull	13
Engine Room	13
Electronics & Helm	15
Mechanical Equipment	15
Performance Data	16
Tender	16

Warranty	16
Additional Details	16
Exclusions	18
Exclusions	18
Disclaimer	18
PHOTOS	19
Running Shot 2	19
Running Shot 3	19
Aerial Running	19
Aerial Running	19
Profile	20
Profile Port	20
Profile 2	20
Profile Starboard	20
Profile 3	20
Profile 4	20
Profile 6	21
Profile 5	21
Profile 7	21
Profile 8	21
Profile 9	21
Profile 10	21
Transom	22
Transom 2	22
Profile 11	22
Profile 12	22
Salon Aft	22
Salon & Galley	22
Master Stateroom	23

---

Master Ensuite Head	23
Guest Forward Stateroom	23
Pilothouse	23
Fly Bridge Seating	23
Fly Bridge Helm	23
Controls	24
Fly Bridge Helm 2	24
Bow	24
Portuguese Bridge	24
Engine Room	24
Propelers	24
CONTACTS	25
Contact details	25
Telephones	25
Office hours	25
Address	25

---

# SPECIFICATIONS

---

## Overview

---

### Broker's Remarks

This late model, heavily equipped 60' Symbol Cockpit Motor Yacht was designed by renowned naval architect Jack Sarin. It was built to be a fully functional trawler/expedition yacht with the ability to run at motor yacht speeds when the need exists. She features Cummins QSM-IIIs on a moderate V-hull that allows for planing but also gets better than a mile to the gallon when cruising at 10 knots. The vessel is over built for her class and features stabilizers, bow and stern thrusters, expansive fly bridge, aft deck davit and 12' Caribe tender, a beautiful satin cherry wood interior, fully equipped galley, and much more. The three stateroom two head layout features an expansive full beam master stateroom, integral galley/salon layout, and cockpit that services the true "yacht fish" feel of this vessel. She is in fantastic condition and features extended engine cover until February 2019. This vessel is equipped with a handheld remote Yacht Controller that allows for single handed operation of the vessel. Please see the "Full Specifications" list for an entire equipment list.

## Basic Information

---

**Category:** Motor Yacht

**Sub Category:** Cockpit

**Model Year:** 2010

**Year Built:** 2010

**Country:** United States

**Cockpit:** Yes

## Dimensions

---

**LOA:** 60' 0" (18.29m)

**LWL:** 48' 9" (14.86m)

**Beam:** 16' 4" (4.98m)

**Max Draft:** 4' 6" (1.37m)

---

## Speed, Capacities and Weight

---

**Cruise Speed:** 10 Kts. (12 MPH)

**Max Speed:** 18 Kts. (21 MPH)

**Displacement:** 69865 Pounds

**Water Capacity:** 200 Gallons

**Holding Tank:** 50 Gallons

**Fuel Capacity:** 700 Gallons

---

## Accommodations

---

**Total Cabins:** 3

**Sleeps:** 8

**Total Heads:** 2

---

## Hull and Deck Information

---

**Hull Material:** Fiberglass

**Hull Configuration:** Modified V-Hull

**Hull Designer:** Jack Sarin

---

## Engine Information

---

**Engines:** 2

**Manufacturer:** Cummins

**Model:** QSM 11

**Fuel Type:** Diesel

---

# DETAILED INFORMATION

---

## Broker Comments

---

**MOTIVATED SELLER BRING ALL OFFERS 60' Symbol Motor Yacht GONE** Custom built design great for fishing and diving expeditions. Mothership/Offshore Adventures" concept inspired by ESPS's show "Go Fisch" loaded with custom options and upgrades. Over \$1,600,000 invested in design, build, options and upgrades!

Plenty of room for large groups of family and friends sleeps 8 comfortably (not counting 2 couches and convertible dinette).

Econo-cruise at 9-10 knots burning only 9-10 gph, fast cruise at 17-18 knots burning 65-70 gph.

Very stable in all sea conditions, wind, and current, vessel features factory installed stabilizers.

Easy to handle around the dock with both bow and stern thrusters. Also features "yacht controller" wireless remote for handheld control and single handed operation.

Recently tuned 32", 5 blade props

Cummins engine service completed October 2014

Generator service completed October 2014

18 new batteries installed in 2014

Extremely well maintained with very low hours and warranty through February 3, 2017

## Salon

---

- Satin interior Cherry Wood finish
- L-shaped settee w/cushions and storage underneath
- 37" flat panel TV w/stereo and cabinets built-in
- Tracvision M-5 SAT TV
- Carpeted rod storage under settee
- BOSE Home Theater System
- Side and rear windows are Tinted Safety Glass
- Sliding main entrance door w/stainless steel frame

- Satin Cherry cabinetry

---

## Galley

---

- Cherry Cabinetry and teak and holly sole w/satin finish
- Corian countertop w/double stainless steel sinks
- Sub-Zero 700 Series upright refrigerator w/freezer and ice drawers
- Kenyon b40509-3b 3 -burner cooktop w/exhaust fan
- Bosch hmb 8050 microwave/convection oven
- Fischer and Paykel ds603hss dishwasher
- GE wsm2420ww stacked washer and dryer in forward hallway closet

---

## Master Stateroom

---

- The full beam master stateroom is expansive and very comfortable. Storage space abounds with ample drawer storage and cedar lined hanging lockers.
- Center line queen berth
- Dressing vanity area
- Stateroom carpeting
- Lighting system
- Sharp flat panel TV with SAT TV
- En suite head and separate shower

---

## Head & Ammenities

---

- Raritan Atlantes "Freedom" Series electric marine toilets, freshwater flush
- Raritan Electroscan Systems w/salt feed injection
- Grohe faucets and shower fittings
- FRP molded showers w/teak grate flooring



- Electric Exhaust Fan
- Corian Countertop w/Sink
- Vanity, Mirror and Cabinetry w/Storage

---

## Guest Stateroom Forward

---

The forward stateroom features an oversized V-berth with upper and lower berths that comfortably sleeps 4. The lower berth has a filler cushion to make an oversized lower berth. This stateroom shares a head with the second guest room that is aft.

---

## Guest Stateroom Aft

---

This stateroom is located aft of the forward stateroom and features an over/under berth arrangement.

---

## Pilothouse

---

- Pompanette signature series Platinum helm chair
- Hi-Lo dining table w/cushion for conversion to sleeper
- Sliding salon entrance door on both port and starboard sides
- Red light fixtures in Pilothouse
- Yacht controller hand held remote
- Lower helm station controls
- L-shaped settee with cushions and storage underneath

### **Pilothouse Electronics:** FLIR night vision camera system

2 x Raymarine E120 multi-function display screens with the following capabilities:

- Radar (high definition)
- Fish finder
- Chart plotter
- Video-in for 4 onboard cameras

- FLI R night vision
- Simrad AP 28 auto pilot
- ACR spotlight control
- Furuno RD 30
- Icom IC-M504 VHF radio
- Thruster controls
- Stabilizer controls
- Xintrex converter panel
- Rudder angle indicator

## Fly Bridge

---

- Upper helm station w/controls, gauges, engine & bilge alarms
- Compass
- Stainless steel steering wheel
- Pompanette "ss Tournament Series" Helm Seats
- Radar Arch w/*mast* light and stainless steel hinge
- 316 Stainless steel stanchion rail, port and starboard
- Port and starboard built -in settees with cushions
- Spacious boat deck with davit and dinghy storage
- UMT hydraulic davit 1000 lb. capacity
- Caribe 12' RIB w/30hp Nissan engine and cover
- Stainless steel ladder to cockpit with hinged hatch • Radar (high definition)
- Fish finder
- Chart plotter

## Electrical System

---

- 
- 16 KW Northern Lights m844w3 Generator 110/220v with Sound Shield and Silencer (366 hrs)
  - 24v AGM Lifeline Batteries for House and Engine start, in FRP Boxes
  - 24v Battery Charger
  - 9 Lifeline gpl-3100t 12v/105a batteries
  - 10-2304 Guest Battery Selector Switches
  - Cha93 Charles Isoboost Transformer
  - Engine DC power isolating switches Ox per engine
  - Color Coded and Numbered Electrical Wiring
  - AC/DC Main Panel in Pilothouse
  - Video-in for 4 onboard cameras
  - FLI R night vision
  - Simrad AP 28 auto pilot
  - ACR spotlight control
  - Furuno RD 30
  - Icom IC-M504 VHF radio
  - Thruster controls
  - Stabilizer controls
  - Xintrex converter panel • Rudder angle indicator

**Fly Bridge Electronics:** 2 x Raymarine E120 multi-function display screens with the following capabilities:

- Main electrical panel
- Stairwell to below deck carpeted
- 2 par 45900-0001 24v spreader flood light on bridge

## Cockpit

---

- 125/250 VAC 50A Marinco Shore Power Connection

- 
- Shore Telephone/TV Connection in swim step
  - Electrolysis Bonding System
  - 4000W Xantrex Inverter/Charger
  - Interior GFI outlets in Galley, lazarette and Heads
  - LED Lighting
  - Exterior GFI Outlets w SS Covers on aft deck and fly bridge
  - Interior 12 Systems LED Overhead Fixtures on Dimmer Switches
  - Exterior 12 Systems LED Overhead Fixtures, Dimmers for Cockpit Area
  - 4 Cantalupi Swivel Reading Lamp Fixtures in Staterooms
  - Swim Platform w/Slide-Out Swim Ladder and Transom Gate
  - Stainless Steel Grab Rails at Port and Starboard Transom Corners
  - Stainless Steel Cleats on Swim Platform
  - 2 Hinged Fish boxes with gas lift shocks
  - 50 Gal Bait Tank with Circulation Pump
  - ULine bi-95a Ice Machine
  - Tackle Station w/Drawers
  - Storage Lockers
  - Rod Holders
  - Engine Room Access Door on Aft Deck
  - LED Fixtures under Cockpit Coaming Bolsters
  - Recessed Transom Shower

## Deck Equipment

---

- Diamond nonskid decking
- Stainless Steel Hawse Pipes w/Cleats
- Electric Muir H3500 Jaguar dual gypsy windlass w/dual station controls

- 
- 75 LB CQR Stainless anchor
  - Covered Walk around Side Decks w/Stainless Steel Hand Rails
  - Fresh and salt water washdown
  - Anchor and 150' of 112 HT chain and 300' of 3/4 rode
  - Chain locker
  - Portuguese Bridge w/Gate and Built-In Seating
  - Lazarette Access Deck Hatch on Aft Deck
  - Shore Water and Shore Power Cabinet

## Hull

---

- Cook gel coat with UV protection
- Anti-Fouling Bottom Paint w/Boot Stripe
- Rigid vinyl rub rail with stainless steel insert
- 8 Stainless Steel Rectangular Portholes
- Watertight bulkheads
- 2 Bennett Trim Tabs 24x12
- Deep keel for prop protection
- Spurs 119ctre Shaft Rope Cutters
- 2 5-Blade props
- 2 Stainless Steel Prop Shafts
- 2 V-Shaped stainless steel struts
- Solid fiberglass hull bottom
- Cored decks and side decks \*\* Spurs cutters were removed from shafts but will come with the boat.

## Engine Room

---

- Twin Cummins QSM11 715hp engines
- Twin engine hour meters
- 4 rule 16 Bilge Pumps
- Electric Bilge Blower
- 2 75/1000max30 Dual Filter System for Engines
- 1 75/500max30 Dual Filter System for Generator
- Fuel and Water level gauges
- Groco Bilge Alarm System
- Algae-X Fuel Polishing System for each engine
- Engine cooling system with sea water intake and strainer (each engine)
- White Coated Perforated Aluminum Net for Additional Insulation
- Cooled Rubber Bearings (For shaft support)
- 2" Lead Lined Foam Sound Insulation in Engine Room
- Prepped for Watermaker
- 2 PYI Pss Dripless Shaft Seals
- 2 FRP Shaft Logs
- Stainless Steel Emergency Rudder Tiller
- 50 Gallon Holding Tank with Y-Selector and Macerator
- 2 Tides rpb-i-2500 Rudder Seals
- 2 SS Rudder Blades w/Stuffing Box
- 3 24V and 3 120V lights in Engine Room
- FireBoy ma2-850 Fire Alarm and Extinguishing System in Engine Room
- Engine and Bilge Warning Lights, Dual Station
- Fresh water spigot in engine room
- Work Bench with Storage Bin, Drawer and Vice

- 
- Anti-Slip Floor w/Rubber Matting in Engine Room
  - Delta T Blower Ventilation System in Engine Room
  - Underwater exhaust system with Unicraft Mufflers
  - Stainless Steel Engine Mounts

## Electronics & Helm

---

- 4x Raymarine E120's - two at each helm station
- Raymarine high definition open array radar
- Simrad autopilot system (dual station controls)
- TracVision M5 Satellite receiver with 2x domes
- 3x DVR boxes in salon
- 2x Furuno RD-30 for depth & speed
- 2x 8' Shakespeare VHF antenna
- 2x iCom VHF radios
- 4x Raymarine cameras
- FLIR Navigator II thermal imaging system with pan & tilt function

## Mechanical Equipment

---

- Electronic Engine Throttle and Shift, Dual Station
- 2-98-24 rule Shower Pump System
- 24v Electric Air horn
- 2 CruiseAir rx16c 16000 BTU A/C System
- 2 CruiseAir rx24c 24000 BTU A/C System
- Electric Shower/Sink Sump Pump
- Glendenning cm-7 Cable master
- 2 Raritan Electroscan Systems with fresh water flush and salt feed

- 
- MV20/220v Torrid Stainless Steel Water Heater with Heat Exchange tanks
  - Fresh Water System with Filter and Accumulator
  - Teleflex Dual Station Power Steering System
  - Wesmar RS600 Stabilizers
  - Wesmar SidePower sp200tci Electric
  - Bow and Stern Thrusters 25 hp each, dual prop

## Performance Data

---

Performance:

- RPM GPH SPEED
- 1240 9-10 Knots 9-10 GPH
- 2350 16-17 Knots 60-65 GPH 80%
- 2550 21-22 Knots 70-75 GPH 100%

## Tender

---

Caribe 12' RIB w/30hp Nissan outboard engine and cover

## Warranty

---

Cummins Engine Extended Warranty: 6 years/3000 hours until 2/3/2019

## Additional Details

---

- Yacht Controller System
- Bose Home Theater System in Salon
- Fusion Marine Stereo System on Bridge with Sirius Radio and Ipod Adapter
- Raymarine Hi definition Fishfinder with SS270 dual range transducer
- Sirius Satellite weather/radio module



- 
- Acr rcl-1000 searchlight
  - Algae-x fuel system
  - Xw4024 xantrex inverter
  - Fireboy ma2-850 system
  - Uline bi-95a ice maker in cockpit
  - Fischer & paykel ds603hss dishwasher
  - Ge wsm2420ww washer/dryer
  - Bosch hmb 8050 microwave
  - Kenyon b40509-3b cooktop
  - Cha93 charles isoboost transformer
  - Sub zero 700 series refrigerator
  - 9-lifeline gpl-3100t 12v/105a batteries
  - Grohe Faucets & shower fittings
  - Glendinning eec-2003 electronic engine controls
  - Cm-7 glendinning cable master with accessories
  - Spurs 119ctre shaft rope cutters
  - Northern lights m844w3 16kw generator
  - 2-cruiseair rx24c 24000 btu ac system
  - 2-cruiseair rx16c 16000 btu ac system
  - 2-75/1000max30 dual filter system for engines
  - 1-75/500max30 dual filter system for generator
  - Westmar rs600 stabilizer system
  - Side power sp200tci bow & stern thruster
  - 2-par 45900-0001 24v spreader floodlight on bridge
  - 10-2304 guest battery selector switches

- Mv20/220v torrid ss water heater
- 4-rule 16 bilge pumps
- 2-98-24 rule shower pump systems
- 2-pyi pss shaft seals
- 2- tides rpb-i-2500 rudder seals
- 2- bennett trim tabs 24x12
- Muir h3500 jaguar dual gypsy windlass with 75 lb cqr ss anchor and 150' of 1/2 ht chain & 300' of 3/4 rode
- Dual ss anchor roller system
- Power steering
- 2-Raritan Electroscan systems with fresh water flush and salt feed tanks
- Prepped for watermaker
- UMT Hydraulic Davit

\*Cummins extended warranty: 6 years/3000 hours from Feb, 2013 (through 2019)\*

---

## Exclusions

---

OWNER'S PERSONAL ITEMS OR ANY OTHER ITEM NOT LISTED HEREIN AT TIME OF VIEWING.

---

## Exclusions

---

Owner's personal belongings.

---

## Disclaimer

---

The Company offers the details of this vessel or yacht in good faith but cannot guarantee or warrant the accuracy of this information nor warrant the condition of the vessel. A buyer should instruct his representatives, agents, or his surveyors, to investigate such details as the buyer desires validated. This vessel or yacht is offered subject to prior sale, price change, or withdrawal without notice.

# PHOTOS

**Running Shot 2**



**Running Shot 3**



**Aerial Running**

**Aerial Running**



**Profile**



**Profile Port**



**Profile Starboard**



**Profile 2**



**Profile 3**



**Profile 4**



**Profile 5**



**Profile 6**



**Profile 7**



**Profile 8**



**Profile 9**



**Profile 10**



**Transom**



**Transom 2**



**Profile 11**



**Profile 12**



**Salon Aft**



**Salon & Galley**



**Master Stateroom**



**Master Ensuite Head**



**Guest Forward Stateroom**



**Pilothouse**



**Fly Bridge Seating**



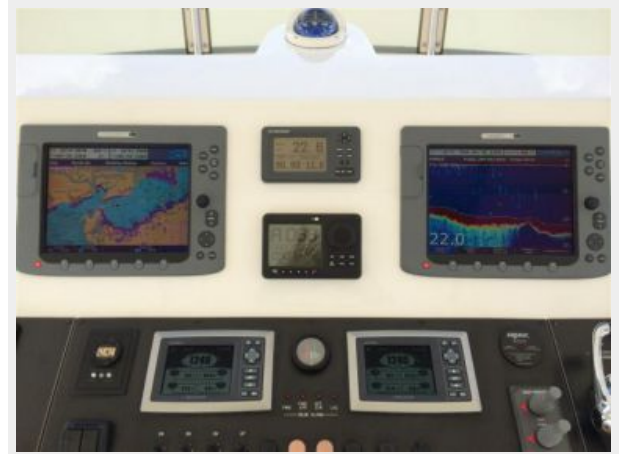
**Fly Bridge Helm**



**Fly Bridge Helm 2**



**Controls**



**Portuguese Bridge**



**Bow**



**Engine Room**



**Propellers**





---

# CONTACTS

---

Andrey Shestakov, leading yacht broker of the sales department of Shestakov Yacht Sales Inc. Shestakov Yacht Sales Inc., the official representative of the Miami/Fort Lauderdale FL headquarters.

---

## Contact details

---

Email: [andrey@shestakovyachtsales.com](mailto:andrey@shestakovyachtsales.com)

Web: [shestakovyachtsales.com/en/](http://shestakovyachtsales.com/en/)

---

## Telephones

---

USA: +1(954)274-4435

---

## Office hours

---

Monday – Saturday: **9:00 - 21:00** EDT

Sunday: **closed**

---

## Address

---



Harbour Towne Marina, 850 NE 3rd St,  
STE 213, Dania, FL 33004