

OUR TRADE RIVA DOMINO — RIVA



Builder: RIVA

Year Built: 2012

Model: Motor Yacht

Price: PRICE ON APPLICATION

Location: United States

LOA: 86' 0" (26.21m)

Beam: 20' 4" (6.20m)

Max Draft: 6' 0" (1.83m)

Cruise Speed: 34 Kts. (39 MPH)

Max Speed: 38 Kts. (44 MPH)

Our experienced yacht broker, Andrey Shestakov, will help you choose and buy a yacht that best suits your needs. Our trade Riva Domino — RIVA from our catalogue. Presently, at Shestakov Yacht Sales Inc., we have a wide variety of yachts available on our sale's list. We also work in close contact with all the big yacht manufacturers from all over the world.

If you would like to buy a yacht **Our trade Riva Domino — RIVA** or would like help answering any questions concerning purchasing, selling or chartering a yacht, please call **+1(954)274-4435**

TABLE OF CONTENTS

TABLE OF CONTENTS	2
SPECIFICATIONS	6
Overview	6
Basic Information	6
Dimensions	6
Speed, Capacities and Weight	6
Accommodations	6
Hull and Deck Information	7
Engine Information	7
DETAILED INFORMATION	8
Factory Options	8
Hull, Deck and Deckhouse	8
Hatches & Windows	9
Cockpit	9
Sundeck	9
Helm station	10
Lounge	10
Dining Area	10
Galley	10
Lobby (Lower deck)	11
Master cabin	11
VIP cabin and head	11
Guest cabin (Port side)	12
Guest cabin (Starboard side)	12
Crew cabin (at bow)	13
Crew cabin (at stern)	13
Engine Room	13
Systems	13

Electric system	14
Safety equipment	14
Exclusions	14
Disclaimer	15
PHOTOS	16
2013 Riva Domino 86 Our Trade	16
2013 Riva Domino 86 Our Trade	16
2013 Riva Domino 86 Our Trade	16
2013 Riva Domino 86 Our Trade	16
Bow	16
Bow seating	16
Bow table and seating area	17
Bow table and seating area with sun cover	17
Main helm	17
Main helm	17
Access to flybridge	17
Control station in flybridge	17
Salon	18
Salon	18
Salon	18
Dining area	18
Dining area	18
Dining area	18
Main helm	19
Galley	19
Galley	19
Galley	19
Galley	19
Master cabin	19

Master cabin	20
Master cabin	20
Master cabin	20
Master cabin	20
Master cabin	20
Master cabin	20
Master cabin head	21
Master cabin	21
Master cabin head	21
VIP cabin	21
VIP cabin	22
VIP cabin	22
VIP cabin head	22
VIP cabin head	22
Guests cabin	23
Guests cabin	23
Guests cabin head	23
Crew area	23
Crew area	24
Crew area	24
Washer and dryer in crew area	24
Crew area	24
Crew area	25
Crew cabin	25
2nd Crew area	25
Crew area head	25
Engine room	26
Engine room	26
2013 Riva Domino 86 Our Trade	26

Engine room	26
CONTACTS	27
Contact details	27
Telephones	27
Office hours	27
Address	27

SPECIFICATIONS

Overview

2013 86 Riva hull #15 Shiny Silver Metallic Paint Job MTU M93 2435HP CR 2 Garmin 7000 Series Radar/ Chartplotter Yacht Controller Hydraulic Stern Thruster Custom Cockpit Canvas Awning

Basic Information

Category: Motor Yacht

Model Year: 2013

Year Built: 2012

Country: United States

Dimensions

LOA: 86' 0" (26.21m)

LWL: 67' 7" (20.60m)

Beam: 20' 4" (6.20m)

Max Draft: 6' 0" (1.83m)

MFG Length: 86' 7" (26.39m)

Speed, Capacities and Weight

Cruise Speed: 34 Kts. (39 MPH)

Max Speed: 38 Kts. (44 MPH)

Displacement: 165788 Pounds

Water Capacity: 238 Gallons

Fuel Capacity: 1981 Gallons

Accommodations

Total Cabins: 4

Total Berths: 6

Sleeps: 8

Total Heads: 4

Crew Cabin: 2

Hull and Deck Information

Hull Material: Fiberglass

Hull Color: Shiny Silver Metallic Paint

Engine Information

Engines: 2

Manufacturer: MTU

Model: 16V 2000 M93 2435 HP

Engine Type: Inboard

Fuel Type: Diesel

DETAILED INFORMATION

Factory Options

Classification: RINA Class A/NMMA USA Specs New Custom Open Layout Generator: (2) Kohler 28 kW/60Hz (400 Hours) Generator Filter: Racor (2) 1500W Electric winch for stern warping (2) 2700W Electric anchor winches with controls 2 Garmin 7000 series Chartplotter/ Radar Custom cockpit awning YachtController Bow and Stern Thruster Echo Transducer in Aft Watertight loudspeaker on main deck Cockpit and side decks: floor laid in teak Cockpit table with satin finish Cockpit seating area Flybridge Teak Floor BBQ in cockpit Bimini top for bow sofa & table (Manual) Sundeck Dashboard with Navigation Port and Stbrd Electric doors Underwater lights (2 in the color blue) Air conditioning 180,000 BTU Refrigerator Microwave, Dishwasher, Oven & Ceramic Cook Top Dinning table with 8 Chairs Glossy lacquered ceilings KVH M7 antenna Hi-Fi surround system Bose in master, and VIP cabin Hi-Fi Surround system: Bose in Salon iPod Docking station for Bose in Master, VIP, and Salon TV with Lift in Salon TV in Master cabin, VIP, and port side guest Docking station for Mini Hi-Fi Guest and Captain Cabin Stereo CD in crew cabin Upholstered Sofa and armchair in master Vanity unit with chest of drawers and a chair in master Sofas and armchairs in salon Leather coffee table in salon External sunpads and cushions with draining foam Anti incendiary system Life Rafts

Hull, Deck and Deckhouse

Access stair to the flybridge in stainless steel and steps in teak Access to the swimming platform via fiberglass steps, footboard laid in teak and courtesy lights Air intake covers (2) Bow sofa cover Bow sofa with upholstered cushions and storage Bow storage dinette with fresh water preparation (2) Bow storage for ball fenders, covers and various equipment Bow sunpad cover Bow sunpad with upholstered cushions with plexiglass glass holder Bow table cover Concealed stainless steel electro-hydraulic swimming ladder built into the swimming platform Echo transducer moved on aft Electric anchor winches 2700W with controls at the helm station, at bow and on the flybridge (2) Electric winch for stern warping 1700W 24V (2) Electro-hydraulic retractable gangway in stainless steel and teak Electro-hydraulic stern garage fiberglass hatch Fiberglass cover with Riva Cream finish Fiberglass deckhouse with Riva Cream colour finish Fiberglass hatches to cover stern winches and cleats (2) Fiberglass hull with Riva Cream colour finish Fiberglass swimming platform with teak covering Fire-fighting hose with sprinkler at bow Freshwater intake in chromed brass Freshwater shore connection at bow and at stern Fuel intakes in chromed brass, one for each side (2) Hull with antifouling coating Hydraulic bow thruster 40 Hp Pulpit: side opening (couple) Shower with hot and cold water mixer tap at stern Side walkaways in teak Stainless steel cleats: (6) at stern, (4) at mid-ship and (2) at bow Stainless steel deck accessories Stainless steel fairleads at bow and stern Stainless steel handrail on stairs to the cockpit Stainless steel hawses with bow protection and fairleads Stainless steel perimeter guardrail Stainless steel rub rail Stern cockpit and side walkways in teak Stern garage on platform level for storage of a tender and jet ski Teak table with opaque

coating at bow Telephone and TV shore connection at stern Two bow anchors in polished stainless steel; primary anchor (50 kg) with 100 m of galvanized steel chain (12 mm); secondary anchor (30 kg) with 75 m of galvanized steel chain (12 mm); Watertight loudspeakers at bow dinette connected to the stereo in the lounge (2)

Hatches & Windows

Access hatch to anchor chain locker (2) Access hatch to crew area from the cockpit Emergency exit hatch from the bow cabin to the deck Engine room access hatchway from the cockpit Foldable door in stainless steel, hardened glass to access flybridge from the outside stair Fold-back side door (2) Helm station windshield in multilayer tempered glass Helm station, windshield and windows sun cover Hull windows Interior doors in matt varnished wood, with stainless steel handles and thresholds Portholes in stainless steel and plexiglass Side windows sun cover Sliding main entrance door in stainless steel and tempered monolithic glass Windows in monolithic hardened glass Wipers with built-in washers and timer (2)

Cockpit

Cockpit chairs (4) Cockpit fiberglass chaise longue with upholstered cushions Cockpit sofa with upholstered cushions Fiberglass cabinet fitted with sink and electric grill Fiberglass floor laid in teak Fiberglass unit equipped with ice-maker and locker Ice-maker 60Hz Spotlights Stern chaise longue cover Stern gates in stainless steel and plexiglass with manual blocking system (2) Clock barometer with hygro-thermometer Echo-sounder function Electric bow thruster control panel with joystick Electric outlet 230 V Electro-hydraulic steering system Engine/inverter electronic controls with "easy dock" system Extinguisher Flap angle gauge Monitoring system with LCD touch screen connected to CCTV cameras Multifunction navigation instrument (depth, speed, compass, temperature) PC Plotter equipped with keyboard, mouse, CD player and colour screen Pilot seat upholstered (3) Rudder angle indicator Socket (cigarette lighter type) 12V Spotlights Telephone Upholstered and varnished ceilings Varnished fiberglass helm station with leather-covered steering wheel, complete engine instrumentation, electronic engine fuel/reverse gear levers, compass, alarm lights Windscreen washer-wiper control panel Wooden bulkheads and furniture with matt finish Wooden flooring

Sundeck

Acoustic alarm Adjustable searchlight controlled from the helm station Antenna TV SAT (American Version) Class D VHF radio telephone with DSC, w/ independent antenna Combined alarm Control station cover Electro-hydraulic steering system Fiberglass floor laid in teak Fiberglass Fiberglass pilot seat with upholstered cushions and storage under seat GPS Antenna (2) Navigation and anchor lights Pilot seat and guest seat covers Radar antenna 2nd Fiberglass control station varnished w/ upholstered steering wheel instrumentation and alarm lights Socket (cigarette lighter) 12V Spotlights Stainless steel rub rail SS signal mast Sunpad area with

upholstered cushions Sunpad cover TV antenna VHF antenna Watertight loudspeakers connected to the stereo in the lounge (2)

Helm station

Acoustic alarm for water in bilge Audio-video configuration Automatic pilot with rudder angle indicator interfaced w/ GPS plotter Chain counter for the arch winch Clas D VHF radio telephone w/ DSC and separate antenna Clock, barometer w/ hydro-thermometer Echo-sounder function Electric bow thruster control panel w/ joystick Electric outlet 230V Electro-hydraulic steering system Engine inverter electronic controls w/ easy dock system Extinguisher Flap angle gauge Monitoring system w/ LCD touch screen connected to CCTV cameras Multifunction navigation instrument (depth, speed, compass, temperature) PC plotter equipped w/ keyboard, mouse, CD player, and screen Pilot seat upholstered (3) Rudder angle indicator Socket (cigarette lighter) 12V Spotlights Telephone Upholstered varnished ceilings Varnished fiberglass helm station with leather- covered steering wheel, complete engine instrumentation, electronic engine fuel/ reverse gear levers, compass, alarm lights Windscreen washer-wiper control panel Wooden bulkheads and furniture w/ matt finish Wooden flooring

Lounge

Cabinet with 24/230V refrigerator Carpeted floor with padding underneath Cushion 45 x 45 (6) Electric outlet 230 V Extinguisher Fabric curtain for stern door Glossy lacquered ceiling Hi-Fi system I-Pod Docking Station Leather armchair (2) Leather sofa with 3 seats (2) Sole leather and wooden coffee table Spotlights Telephone TV 55" (60Hz) TV SAT receiver HD Venetian blinds Wooden bulkheads and furniture with matt finish, sole leather details and glossy lacquering

Dining Area

Black out Venetian blinds Chairs (8) with case where to store 4 pieces Electric outlet 230V Extinguisher Glossy lacquered ceilings Lateral cabinets – starboard and port side (2) in sole leather Plexiglass housings for cutlery and tableware Sliding table for 8 people upholstered in sole leather Spotlights and lighting panels Wooden bulkheads and furniture with matt finish, leather panel and glossy laquerin

Galley

Anti-slip wooden flooring Anti-slip wooden steps to lounge Cooking top ceramic 60Hz Corian worktop Dishwasher Electric outlet 230 V Extinguisher Extractor hood with direct outboard discharge Fridge 60Hz Glossy lacquered ceiling Glossy lacquered furniture and wall units Grey water 3 way valve in galley Microwave oven 60Hz Oven 60Hz Porthole housing with Venetian blinds Spotlights Storage below steps Washbasin with mixer tap Wooden bulkheads

Lobby (Lower deck)

Carpeted flooring with padding underneath Glossy lacquered ceiling Spotlights Steps from the main deck Wooden bulkheads with matt finish and sole leather inserts

Master cabin

Bed border upholstered in sole leather Carpeted flooring with padding underneath Cushions 40 x 40 cm (4) Docking station for i-pod Double bed with mattress, pillows, bedspread and pillow covers Drawer under the bed (2) Electric outlet 230V Extinguisher Glossy lacquered ceiling Headboard upholstered in sole leather Hi-Fi System Mirror Porthole housing with Venetian blinds and black out blinds Reading lights (2) Safe Set of sheets and pillow cases (2) Spotlights and lighting panels Telephone TV 32" (60Hz) TV SAT receiver HD Upholstered sofa and armchair Vanity unit with chest of drawers and chair Walk-in wardrobe with courtesy lights, small cabinet and luggage storage Wooden bulkheads and furniture with matt finish, sole leather details and glossy lacquering Wooden nightstands lacquered (2) Electric extractor Electric outlet 230V Electric toilet and bidet in ceramic Glossy lacquered ceiling Mirror Porthole housing with Venetian blinds Set of towels (2) Shower compartment with teak grating, stainless steel and glass door Spotlights Wooden bulkheads and cabinets with matt varnish and laminate Wooden unit under wash basin

Master Bathroom:

Anti slip wooden floor Black water tank level indicator integrated in the toilet control panel Corian sink with mixer tap Corian wash basin Electric extractor Electric outlet 230V Electric toilet and bidet in ceramic Glossy lacquered ceiling Mirror Porthole housing with Venetian blinds Shower compartment with teak grating, stainless steel and glass door Spotlights Wooden bulkheads with cabinets with matt varnish and laminate Wooden unit under wash basin

VIP Cabin and Head

VIP cabin and head

Bed border upholstered in sole leather Carpeted flooring with padding underneath Cushions 40 x 40 cm (2) Docking for I-POD Double bed with mattress, pillows, bedspread and pillow covers Drawer under the bed Electric outlet 230 V Extinguisher Glossy lacquered ceiling Headboard and bed frame upholstered in sole leather Headboard upholstered in sole leather with integrated mirror Hi-Fi system Lateral shelves Mirror Porthole housing with Venetian blinds and black out blinds Reading lights (2) Set of sheets and pillow cases Spotlights, lighting panels and luminous beam Telephone TV 19" (60Hz) Wardrobes with courtesy lights (2) Wooden bulkheads and furniture with matt finish, sole leather details and matt and glossy lacquering Wooden nightstands lacquered (2)

VIP Bathroom

Anti-slip wooden floor Black water tank level indicator integrated in the toilet control panel Corian washbasin top Corian washbasin with mixer tap Electric ceramic toilet/bidet Electric extractor Electric outlet 230 V Glossy lacquered ceiling Mirror Porthole housing with Venetian blinds Set of towels (2) Shower unit with glass doors and stainless steel sections and floor with teak grating Spotlights Wooden cabinets Wooden unit under wash basin

Guest cabin (Port side)

Bed border upholstered in sole leather Carpeted flooring with padding underneath Cushions 40 x 40 cm (2) Docking station for Mini Hi-Fi Drawer under the beds Electric outlet 230 V Extinguisher Glossy lacquered ceiling and in wood Headboard upholstered in sole leather with integrated mirror Matt varnished wooden bulkheads and furniture with sole leather details and matt and glossy lacquering Mini Hi-Fi CD/DVD |Mirror Porthole housing with Venetian blinds and black out blinds Set of single (2) and double (1) sheets and pillow cases Single beds with mattresses, pillows, bedspreads and pillow covers (2) (one fixed and one sliding) Spotlights, lightning panels and luminous beam Telephone Wardrobe with courtesy lights Wooden nightstands (2)

Guest bathroom (port side) Anti-slip wooden floor Bathroom accessories (towel rail, soap holder, (2) bathrobe hangers, toilet paper holder, toilet brush holder and glass for toothbrushes) Black water tank level indicator integrated in the toilet control panel Corian washbasin top Corian washbasin with mixer tap Electric ceramic toilet/bidet Electric extractor Electric outlet 230V Glossy lacquered ceiling Mirror Porthole housing with Venetian blinds Shower unit with glass doors and stainless steel sections and floor with teak grating Spotlights Wooden bulkheads and cabinets with matt varnish and laminate Wooden cabinets

Guest cabin (Starboard side)

Bed border upholstered in sole leather Carpeted floor with padding underneath Cushions 40 x 40 cm (2) Docking station for Mini Hi-Fi Drawer under the bed Electric outlet 230 V Extinguisher Glossy lacquered ceiling inlaid in wood Headboard upholstered in sole leather with integrated mirror Lacquered nightstands (2) Matt varnished wooden bulkheads and furniture with sole leather details and glossy lacquering |Mini Hi-fi CD/DVD Porthole housing with Venetian blinds and black out blinds Set of sheets and pillow cases (2) Single beds with mattress, pillows, bedspreads and pillow covers (2) Spotlights, lighting panels and luminous beam Telephone Wardrobe with courtesy lights

Guest Bathroom (day head, starboard side)

Additional access from lower deck lobby Anti-slip wooden flooring Bathroom accessories (towel rail, soap holder, (2) bathrobe hangers, toilet paper holder, toilet brush holder and glass for toothbrushes) Black water tank level indicator integrated in the toilet control panel Corian washbasin top Corian washbasin with mixer tap Electric ceramic toilet/bidet Electric extractor

Electric outlet 230V Glossy lacquered ceiling Mirror Porthole housing with Venetian blinds
Shower unit glass doors and stainless steel sections and floor with teak grating Spotlights
Wooden bulkheads and cabinets with matt varnish and laminate Wooden cabinets and shelves
Wooden unit under wash basin

Crew cabin (at bow)

Bunk beds with mattress, pillow and bedspreads Carpeted flooring with padding underneath
Docking station for mini Hi-Fi Electric outlet 230V Extinguisher Fabric ceiling Mini Hi-Fi CD
Porthole housing with fabric curtain Reading lights (2) Set of sheets and pillow cases (2)
Spotlights Wardrobe Wooden bulkheads and furniture

Crew cabin (at stern)

Bunk beds with mattress, pillow and bedspreads Carpeted flooring with padding underneath
Docking station for mini Hi-Fi Electric outlet 230V Extinguisher Fabric ceiling Mini Hi-Fi CD
Porthole housing with fabric curtain Reading lights (2) Set of sheets and pillow cases (2)
Spotlights Wardrobe Wooden bulkheads and furniture

Engine Room

Acoustic and thermal insulation Air inlets (2) CCTV infrared colour camera (2) Engine cooling
water filters (2) Engine gas outlets with mufflers and silencers Floor in anti-slip light alloy
Freshwater tap for topping up and cleaning Fuel-water separator filters with alarms Lighting
Stainless steel stair for access to engine room Structural 7500 liter fuel tank with mechanical
level indicator Water-on-board alarm sensor Watertight bulkheads at bow and stern |Watertight
door

Systems

Air conditioning American version (outlet in the bathrooms included) Automatic extinguisher in
engine room with external control Bilge discharge system with (5) immersed electric pumps with
automatic controls Black water discharge system with centralized holding tank, electric pump for
direct outboard discharge, direct discharge by shore suction and multi-function emergency pump
Black water tank 330lt Centralised bilge discharge system connected to the electric multifunction
pump with deviator for each area Device for remote closure of the engine fuel supply valves and
generator controlled by the fire fighting system Electro-hydraulic servo-assisted steering system
Emergency bilge discharge system using main engines suction system in case of emergency (2)
Engine room air extraction system Fire fighting: smoke detectors in each area Freshwater tank
900 lt Grey water discharge system with automatic electric pump (interchangeable with
blackwater pump) Grey water tank Hot water system with two 80-lt boilers Pressurised water

system with two 24/230 V autoclaves Seawater pump and hose inlet on deck Smoke detector system in engine room Toilet system with freshwater flush Trim tabs system (flaps)

Electric system

Air conditioning monitoring and control page: Fan coil American version Battery charger for generator Battery group for engines Battery group for services Battery parallel facility for engine start-up Battery switches Bonding system with porous copper plate Bonding system with porous copper plate for dashboard instrument Breaker box Carling Switch 100A for 240V shore supply Cathodic corrosion protection with zinc anodes Class D VHF radio telephone with DSC with independent antenna (2) Combi battery charger/inverter Connecting channels from engine room to antenna area Electric panels/switchboard modification for American Version Electric system modification for American Version Fuse panel Generator 120/240V 60Hz 32 kW (diff from 20kW) with silence box Generator 120/240V 60Hz 32 kW (diff from 5kW) with silence box Glendinning 100A – 4 poles cable reeler for shore cable (20m) Glendinning remote control Ground connection for sea water intake and railings Ground fault interrupters 120V -6Ma Hatch control sensors Independent generator battery group (2) low water loss Independent sea water intake for air conditioning with filter Independent sea water intake for sea water system with filter Independent sea water intake for water maker with filter Integrated control panel system to manage and monitor the electric system via touch screen display Internal American sockets: double 120V sockets on every box Internal telephone system Inverter for refrigerator power supply Inverter for services Isolation transformer 25KVA Lighting and 230V outlets in various areas Manual battery switch for generator (2) Monitoring system modification for American Version Preparation for decoder: cable 120V + F connector + TV SAT antenna cables in all cabins Preparation for TV in crew area: cable 120V + F connector + TV antenna cables Preparation for TV: cable 120V + F connector + TV antenna cables Shore power connection 63A 230V with cable Shore power GFI 100A-30Ma Smoke detection alarm monitoring page Tanks level monitoring TV connection from shore Voltage reducer for VHF 24/12V Watermaker

Safety equipment

Electrical manual for American version Inflatable life jacket (20) Life rafts compliant to American requirements 2x10 Life ring and line Life ring with luminous float and line Manual fire extinguishers Means of unassisted reboarding Mechanical parts compliant to NMMA |Model indication plate (XF number) NMMA Certification (inspection, testing, documents) NMMA compliance plate Owner manual for American version Warning labels

Exclusions

Owner's personal belongings.

Disclaimer

The Company offers the details of this vessel or yacht in good faith but cannot guarantee or warrant the accuracy of this information nor warrant the condition of the vessel. A buyer should instruct his representatives, agents, or his surveyors, to investigate such details as the buyer desires validated. This vessel or yacht is offered subject to prior sale, price change, or withdrawal without notice.

PHOTOS

2013 Riva Domino 86 Our Trade



2013 Riva Domino 86 Our Trade



2013 Riva Domino 86 Our Trade



2013 Riva Domino 86 Our Trade



Bow



Bow seating



Bow table and seating area



Bow table and seating area with sun cover



Main helm



Main helm



Access to flybridge



Control station in flybridge



Salon



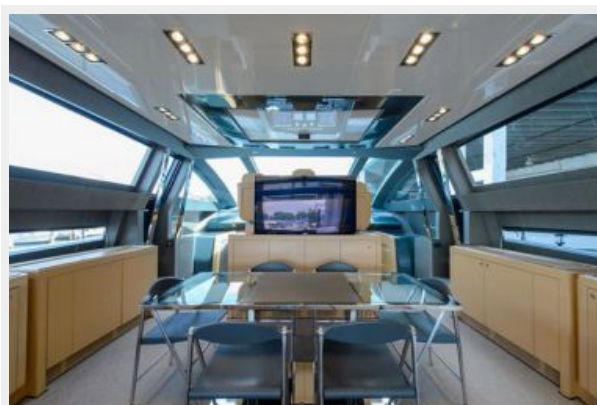
Salon



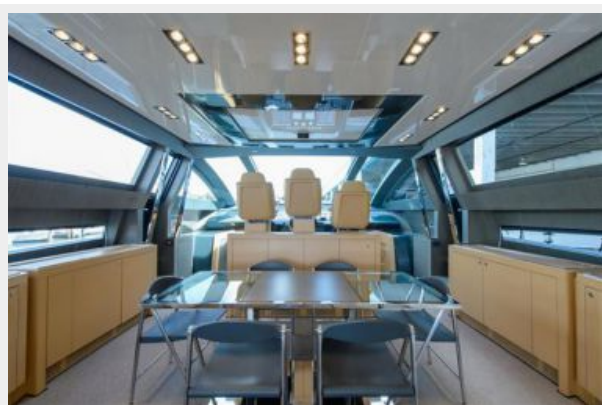
Salon



Dining area



Dining area



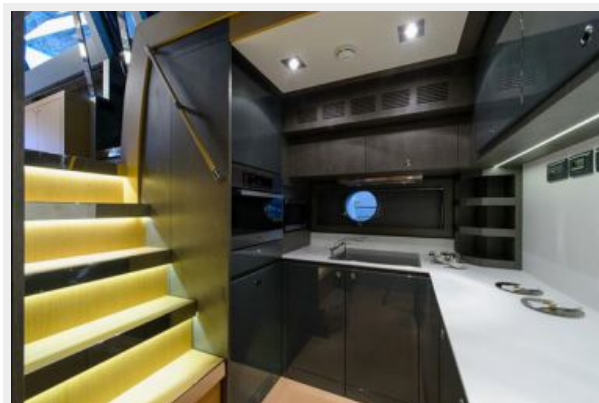
Dining area



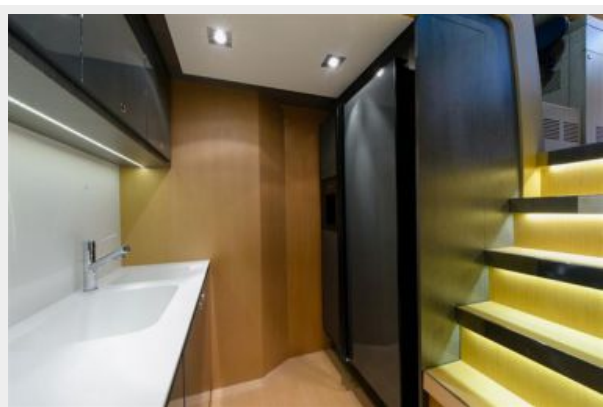
Main helm



Galley



Galley



Galley



Galley



Master cabin



Master cabin



Master cabin



Master cabin



Master cabin



Master cabin



Master cabin



Master cabin



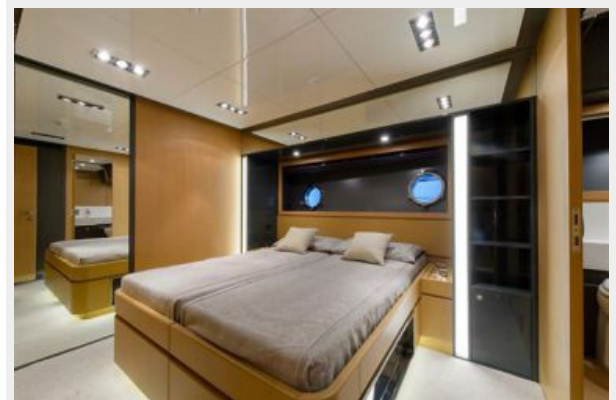
Master cabin head



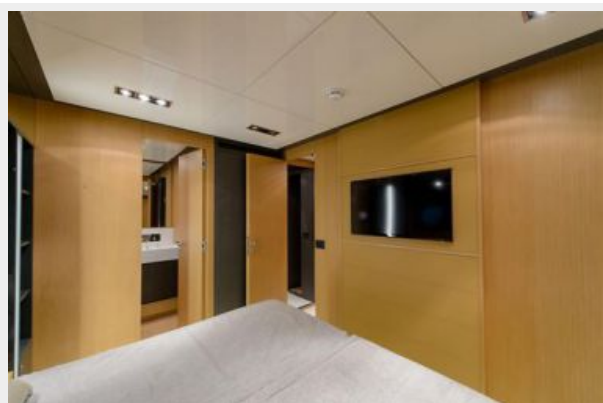
Master cabin head



VIP cabin



VIP cabin



VIP cabin



VIP cabin head



VIP cabin head



Guests cabin



Guests cabin



Guests cabin head



Crew area



Crew area



Crew area



Washer and dryer in crew area

Crew area



Crew area



Crew cabin



2nd Crew area



Crew area head



Engine room



Engine room



2013 Riva Domino 86 Our Trade

Engine room



CONTACTS

Andrey Shestakov, leading yacht broker of the sales department of Shestakov Yacht Sales Inc. Shestakov Yacht Sales Inc., the official representative of the Miami/Fort Lauderdale FL headquarters.

Contact details

Email: **andrey@shestakovyachtsales.com**

Web: shestakovyachtsales.com/en/

Telephones

USA: **+1(954)274-4435**

Office hours

Monday – Saturday: **9:00 - 21:00 EDT**

Sunday: **closed**

Address



Harbour Towne Marina, 850 NE 3rd St,
STE 213, Dania, FL 33004