

## LIBERTY — DEFEVER



**Builder:** DEFEVER

**Year Built:** 1985

**Model:** Trawler

**Price:** PRICE ON APPLICATION

**Location:** United States

**LOA:** 44' 0" (13.41m)

**Beam:** 14' 9" (4.50m)

**Min Draft:** 4' 7" (1.40m)

**Max Draft:** 4' 7" (1.40m)

**Cruise Speed:** 8 Kts. (9 MPH)

**Max Speed:** 9 Kts. (10 MPH)

Our experienced yacht broker, Andrey Shestakov, will help you choose and buy a yacht that best suits your needs **Liberty — DEFEVER** from our catalogue. Presently, at Shestakov Yacht Sales Inc., we have a wide variety of yachts available on our sale's list. We also work in close contact with all the big yacht manufacturers from all over the world.

If you would like to buy a yacht **Liberty — DEFEVER** or would like help answering any questions concerning purchasing, selling or chartering a yacht, please call **+1(954)274-4435**

# TABLE OF CONTENTS

TABLE OF CONTENTS	2
SPECIFICATIONS	6
Overview	6
Basic Information	6
Dimensions	6
Speed, Capacities and Weight	6
Accommodations	7
Hull and Deck Information	7
Engine Information	7
DETAILED INFORMATION	8
44' DeFever Overview	8
44' DeFever Vessel Walkthrough	8
44' DeFever Accommodations	8
44' DeFever Salon	8
44' DeFever Galley	8
44' DeFever Dining	9
44' DeFever Lower Helm	9
44' DeFever Master Stateroom	9
44' DeFever Guest Stateroom	9
44' DeFever Laundry	9
44' DeFever Flybridge	9
44' DeFever Sundeck	9
44' DeFever Audio/Visual Equipment	10
44' DeFever Electronics	10
44' DeFever Electrical Equipment	10
44' DeFever Engine/Mechanical Equipment	11
44' DeFever Deck Equipment	12
44' DeFever Tender	12

44' DeFever Safety & Fire Protection	13
44' DeFever Exclusions	13
44' DeFever Disclaimer	13
Exclusions	13
Disclaimer	13
PHOTOS	14
44' DeFever anchor windlass	14
44' DeFever port aft profile	14
44' DeFever foredeck	14
44' DeFever foredeck aft	14
44' DeFever port side deck photo1	15
44' DeFever port side deck photo2	15
44' DeFever starboard side deck photo1	15
44' DeFever starboard side deck photo2	15
44' DeFever flybridge forward	16
44' DeFever flybridge aft	16
44' DeFever flybridge port	16
44' DeFever flybridge starboard	16
44' DeFever flybridge helm	16
44' DeFever flybridge port aft seating	16
44' DeFever flybridge starboard aft seating	17
44' DeFever tender davit	17
44' DeFever sundeck	17
44' DeFever sundeck port	17
44' DeFever sundeck starboard	17
44' DeFever sundeck foreward	17
44' DeFever sundeck ice machine	18
44' DeFever swimplatform	18
44' DeFever salon forward	18

---

44' DeFever salon aft	18
44' DeFever salon port	18
44' DeFever salon starboard	18
44' DeFever salon port seating	19
44' DeFever galley photo1	19
44' DeFever galley photo2	19
44' DeFever galley photo3	19
44' DeFever refrigeration	19
44' DeFever lower helm photo1	19
44' DeFever lower helm overhead electronics photo1	20
44' DeFever lower helm photo2	20
44' DeFever lower helm overhead electronics photo2	20
44' DeFever master stateroom	20
44' DeFever master stateroom port	20
44' DeFever master stateroom starboard	20
44' DeFever master stateroom head	21
44' DeFever master stateroom forward	21
44' DeFever master stateroom shower	21
44' DeFever guest stateroom	21
44' DeFever guest stateroom head	22
44' DeFever washer-dryer	22
44' DeFever engine room aft	22
44' DeFever engine room forward	22
44' DeFever engine room starboard aft	23
44' DeFever port main engine	23
44' DeFever port Racor fuel filter	23
44' DeFever starboard main engine	23
44' DeFever starboard Racor fuel filter	24
44' DeFever air conditioning system	24

---

---

44' DeFever engine room sea chest	24
44' DeFever water heater	24
44' DeFever electrical panel	25
44' DeFever engine room tool chest	25
44' DeFever battery charger	25
44' DeFever generator	25
<b>CONTACTS</b>	<b>26</b>
Contact details	26
Telephones	26
Office hours	26
Address	26

---

# SPECIFICATIONS

---

## Overview

---

Liberty is a classic 44' DeFever Offshore Cruiser in good condition. She offers Perkins main engines (Remanufactured port engine with only 250 hours since installation in 2007), 12.5kW Westerbeke generator installed in 2006 with only 380 hours, some updated electronics and newer custom salon drapes and flybridge cushions. Liberty is a Great Loop veteran. Sellers bought Liberty to cruise the Great Loop, but their plans have changed, so Liberty is now being offered for sale.

## Basic Information

---

**Category:** Trawler

**Sub Category:** Sundeck

**Model Year:** 1985

**Year Built:** 1985

**Country:** United States

**Registration #:** JAT44149G585

**Vessel Top:** Radar Arch and Bimini

**Fly Bridge:** Yes

## Dimensions

---

**LOA:** 44' 0" (13.41m)

**LWL:** 38' 6" (11.73m)

**Beam:** 14' 9" (4.50m)

**Min Draft:** 4' 7" (1.40m)

**Max Draft:** 4' 7" (1.40m)

## Speed, Capacities and Weight

---

**Cruise Speed:** 8 Kts. (9 MPH)

**Max Speed:** 9 Kts. (10 MPH)

**Displacement:** 44000 Pounds

**Water Capacity:** 364 Gallons

**Holding Tank:** 35 Gallons

**Fuel Capacity:** 950 Gallons

---

## Accommodations

---

**Total Cabins:** 2

**Total Berths:** 3

**Sleeps:** 4

**Total Heads:** 2

---

## Hull and Deck Information

---

**Hull Material:** Fiberglass

**Deck Material:** Composite Fiberglass

**Hull Color:** White

**Hull Finish:** Stainless Steel

**Hull Designer:** Arthur DeFever

---

## Engine Information

---

**Engines:** 2

**Manufacturer:** Perkins

**Model:** Range 4

**Engine Type:** Inboard

**Fuel Type:** Diesel

---

## DETAILED INFORMATION

---

### 44' DeFever Overview

---

Liberty is a classic 44' DeFever Offshore Cruiser in good condition. She offers Perkins main engines (Remanufactured port engine with only 250 hours since installation in 2007), 12.5kW Westerbeke generator installed in 2006 with only 380 hours, some updated electronics and newer custom salon drapes and flybridge cushions. Liberty is a Great Loop veteran. Sellers bought Liberty to cruise the Great Loop, but their plans have changed, so Liberty is now being offered for sale.

### 44' DeFever Vessel Walkthrough

---

Entering the salon from the sundeck, you find the under-counter refrigeration starboard aft, sleeper/sofa to starboard, lower helm and side deck access door starboard forward, galley port aft, side deck access door to starboard, wrap-around settee and table port forward. The master stateroom is aft and the guest stateroom is forward with access to the engine room.

### 44' DeFever Accommodations

---

Liberty offers a full beam aft master stateroom with ensuite head and a guest stateroom forward, which also has an ensuite head. The salon settee converts into a berth and the salon also offers a sleeper/sofa to starboard.

### 44' DeFever Salon

---

The large salon offers under-counter refrigeration starboard aft, sleeper/sofa to starboard, lower helm and side deck access door starboard forward, wrap-around settee (storage underneath), folding table with stools port forward, side deck access door to port and the galley (with extended countertop) port aft, teak parquet sole and large tinted side windows with custom custom drapes. Cushions and drapes are Sunbrella and were added in 2010. The settee also converts into a berth.

### 44' DeFever Galley

---

The galley on the 44' DeFever is located port aft in the salon and offers a side window and aft sliding window for plenty of light and ventilation. There is also plenty of counter space and storage. The forward countertop has been extended to make it a more comfortable bar area.

- Galley Maid Empress 3-burner electric cooktop and stove - GE microwave oven (2010) - Stainless steel sink - 2 X Kenmore under-counter refrigerator/freezers - Vitrofigo ice maker in the



---

sundeck wetbar (2014) - All cookware and cutlery included - Storage cabinets and drawers

---

## 44' DeFever Dining

---

Dining is available at the wrap-around settee and table in the salon.

---

## 44' DeFever Lower Helm

---

The lower helm is located starboard forward in the salon and offers a Pompanette helm seat and a side deck access door for easier docking and line handling.

---

## 44' DeFever Master Stateroom

---

The full beam aft master stateroom offers a centerline queen size berth (new mattress), hanging lockers, lighted walk-in closet, vanity/desk, teak parquet sole, ensuite head, nightstands, reading lights, 2 transom hatches and six portlights for loads of natural light and ventilation.

---

## 44' DeFever Guest Stateroom

---

The guest stateroom forward offers a v-berth with insert, 4 portlights and an overhead hatch for plenty of natural light and ventilation, teak parquet soles, privacy curtain, hanging locker, storage drawers and shelves, reading lights and ensuite head.

---

## 44' DeFever Laundry

---

- Whirlpool washer and dryer (2005)

---

## 44' DeFever Flybridge

---

The huge flybridge offers a full console forward with storage underneath, benchseats port and starboard, helm seat, stainless steel framed bimini, Radar arch, benchseats on each side aft with storage underneath, non-skid decks. Cushions were new in 2010.

---

## 44' DeFever Sundeck

---

Liberty's huge sundeck offers non-skid deck, hard top, deck furniture, BBQ grill in a storage locker with icemaker, aft door to the stainless steel and teak swimplatform ladder, bulwark doors on each side, same level side deck access.

---

## 44' DeFever Audio/Visual Equipment

---

Insignia flat screen TV in the salon

- Fusion MS-IP600 AM/FM/MP# player in the salon
- Audio speakers in the salon
- Samsung DVD-V4600 DVD/VHS player in the salon

---

## 44' DeFever Electronics

---

- Nobeltec 48nm Radar (2005)
- Ritchie Powerdamp magnetic compass at the lower helm
- Danforth Constellation magnetic compass on the flybridge
- Simrad R135 rudder angle indicator at the lower helm
- Simrad AP35 autopilot at the lower helm and flybridge remote panel
- Simrad FU50 follow up steering system on the flybridge
- Datamarine Corinthian Series S200DL depth sounder at the lower helm and on the flybridge
- Icom IC-M45 VHF at the lower helm
- Icom IC-M80 VHF on the flybridge
- Uniden ES UM525 VHF on the flybridge
- Dell ship's computer with Samsung SynchMaster 712N monitor and Nobeltec electronic chart software at the lower helm
- Ship's clock and barometer in the salon
- Intercom system

---

## 44' DeFever Electrical Equipment

---

Westerbeke 12.6BTD 12.6kW generator with 380 hours (2006)

- Coleman 800 watt inverter
- Charles 60 amp battery charger

- 
- Lewco 40 amp battery charger
  - 50 amp shore cord
  - 3 X Group 27 house batteries (Room for seven batteries in battery bank box)
  - 6 X Group 32 main engine start batteries
  - Group 27 generator start battery
  - Sterling Power ProSplit R battery management system (2010)

## **44' DeFever Engine/Mechanical Equipment**

---

Twin Perkins Range 4 240 hp main engines (Remanufactured engine on port side with approximately 250 hours, starboard has 3151 hours)

- Newage 401VR2 gearboxes
- Morse engine controls
- Glendinning synchronizer
- Spurs line cutters
- Fuel manifold
- Racor 900FG fuel filters with vacuum gauges for the main engines
- Racor 500FG fuel filter for the generator
- Oil change system
- Capilano hydraulic steering system
- Cruisair reverse cycle air conditioning/heating system (3 X 12,000BTU units) (salon unit new in 2014)
- Shurflo fresh water pump
- American Appliance Corp 10 gallon water heater
- Sea chest
- Tool box
- Raritan Crown electric heads (Rebuilt in 2010)
- All thru-hulls replaced in 2010

- Rudder bearings and bolts replaced in 2010

## 44' DeFever Deck Equipment

---

- Nilsson anchor windlass with foot controls
- Delta 44lb anchor with 280' 3/8" anchor chain
- Danforth 35lb anchor with 300' 3/4" nylon rode
- Stainless steel anchor roller
- Foredeck storage boxes
- Stainless steel deck hardware
- Stainless steel fender racks
- Teak cap rails on stainless steel stanchions
- Non-skid deck
- Boarding gates on each side
- Rod holders
- Boarding ladder
- Swimplatform
- Stainless steel & teak ladder from swimplatform to the sundeck
- Stainless steel swim ladder

## 44' DeFever Tender

---

- 2003 Avon 10'8" RIB tender
- Mercury 9.9hp outboard (2000)
- Tender davit

---

## 44' DeFever Safety & Fire Protection

---

Fireboy Model 200CG 1301 Halon engine room fire suppression system

- Fire extinguishers
- First Alert and Nighthawk smoke and carbon monoxide detectors
- 2 X Guest search lights
- Rule bilge pumps

---

## 44' DeFever Exclusions

---

Sellers' personal belongings

---

## 44' DeFever Disclaimer

---

The Company offers the details of this vessel in good faith but cannot guarantee or warrant the accuracy of this information nor warrant the condition of the vessel. A buyer should instruct his agents, or his surveyors, to investigate such details as the buyer desires validated. This vessel is offered subject to prior sale, price change, or withdrawal without notice.

---

## Exclusions

---

Owner's personal belongings.

---

## Disclaimer

---

The Company offers the details of this vessel or yacht in good faith but cannot guarantee or warrant the accuracy of this information nor warrant the condition of the vessel. A buyer should instruct his representatives, agents, or his surveyors, to investigate such details as the buyer desires validated. This vessel or yacht is offered subject to prior sale, price change, or withdrawal without notice.

# PHOTOS

**44' DeFever port aft profile**



**44' DeFever anchor windlass**



**44' DeFever foredeck**



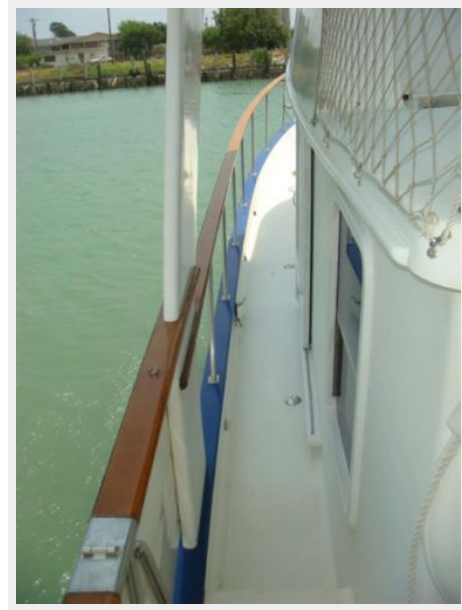
**44' DeFever foredeck aft**



44' DeFever port side deck photo1



44' DeFever port side deck photo2



44' DeFever starboard side deck photo1



44' DeFever starboard side deck photo2





**44' DeFever flybridge forward**



**44' DeFever flybridge aft**



**44' DeFever flybridge port**



**44' DeFever flybridge starboard**



**44' DeFever flybridge helm**



**44' DeFever flybridge port aft seating**





**44' DeFever flybridge starboard aft seating**



**44' DeFever tender davit**



**44' DeFever sundeck**



**44' DeFever sundeck port**



**44' DeFever sundeck starboard**



**44' DeFever sundeck foreward**



**44' DeFever sundeck ice machine**



**44' DeFever swimplatform**



**44' DeFever salon forward**



**44' DeFever salon aft**



**44' DeFever salon port**



**44' DeFever salon starboard**





**44' DeFever salon port seating**



**44' DeFever galley photo1**



**44' DeFever galley photo2**



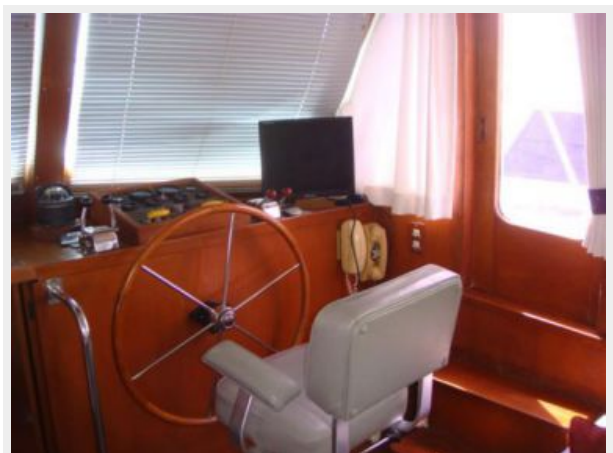
**44' DeFever galley photo3**



**44' DeFever refrigeration**



**44' DeFever lower helm photo1**



44' DeFever lower helm photo2



44' DeFever lower helm overhead electronics photo1



44' DeFever lower helm overhead electronics photo2



44' DeFever master stateroom



44' DeFever master stateroom port



44' DeFever master stateroom starboard



**44' DeFever master stateroom head**

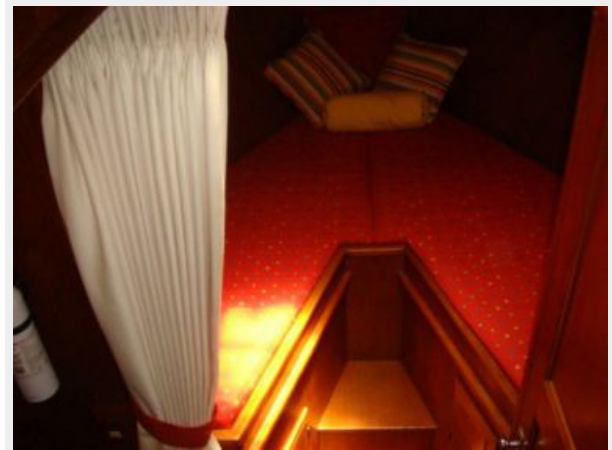
**44' DeFever master stateroom forward**



**44' DeFever master stateroom shower**



**44' DeFever guest stateroom**





44' DeFever guest stateroom head



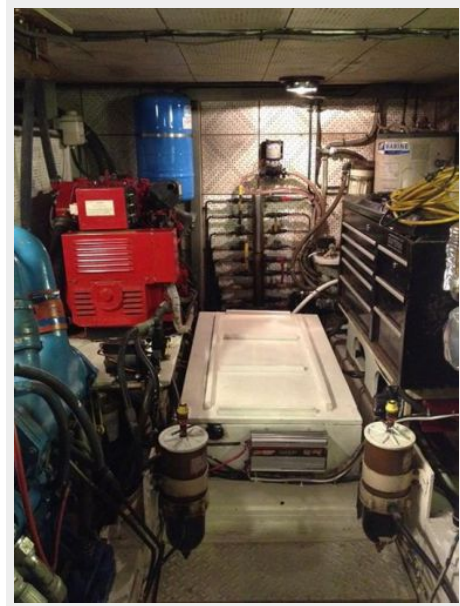
44' DeFever washer-dryer



44' DeFever engine room forward



44' DeFever engine room aft



44' DeFever engine room starboard aft



44' DeFever port main engine



44' DeFever port Racor fuel filter



44' DeFever starboard main engine





44' DeFever starboard Racor fuel filter



44' DeFever air conditioning system



44' DeFever engine room sea chest



44' DeFever water heater





44' DeFever engine room tool chest



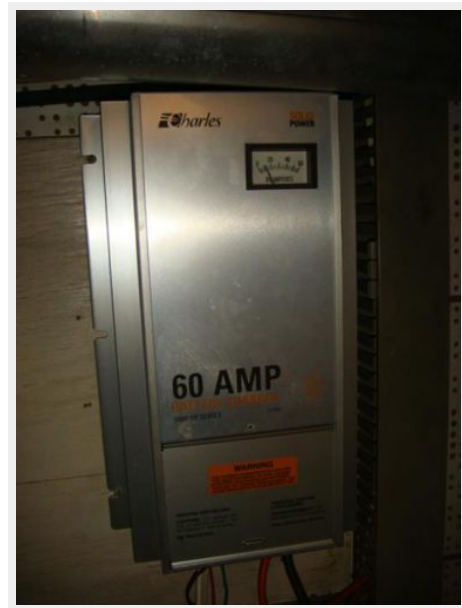
44' DeFever electrical panel



44' DeFever generator



44' DeFever battery charger



# CONTACTS

---

Andrey Shestakov, leading yacht broker of the sales department of Shestakov Yacht Sales Inc. Shestakov Yacht Sales Inc., the official representative of the Miami/Fort Lauderdale FL headquarters.

## Contact details

---

Email: [andrey@shestakovyachtsales.com](mailto:andrey@shestakovyachtsales.com)

Web: [shestakovyachtsales.com/en/](http://shestakovyachtsales.com/en/)

## Telephones

---

USA: +1(954)274-4435

## Office hours

---

Monday – Saturday: **9:00 - 21:00** EDT

Sunday: **closed**

## Address

---



Harbour Towne Marina, 850 NE 3rd St,  
STE 213, Dania, FL 33004