

## LIBERTY — DEFEVER



**Судостроитель:** DEFEVER

**Год постройки:** 1985

**Модель:** Траулер

**Цена:** **ЦЕНА ЯХТЫ ПО ЗАПРОСУ**

**Местонахождение:** United States

**Длина общая:** 44' 0" (13.41m)

**Ширина:** 14' 9" (4.50m)

**Мин. осадка:** 4' 7" (1.40m)

**Макс. осадка:** 4' 7" (1.40m)

**Крейс. скорость:** 8 Kts. (9 MPH)

**Макс. скорость:** 9 Kts. (10 MPH)

Купить Liberty — DEFEVER а также выбрать подходящую вам яхту из нашего каталога яхт вам поможет опытный яхтенный брокер Андрей Шестаков. На сегодняшний день компания Shestakov Yacht Sales Inc. имеет большое количество яхт в собственном списке продаж, а также тесно сотрудничает со всеми крупными яхтенными производителями по всему миру.

Для того чтобы купить яхту Liberty — DEFEVER а также проконсультироваться по любому вопросу связанному с покупкой, продажей, чартером яхт позвоните по телефону **+7(918)465-66-44**.

# ОГЛАВЛЕНИЕ

|   |    |
|---|----|
| ОГЛАВЛЕНИЕ                              | 2  |
| ХАРАКТЕРИСТИКИ                          | 6  |
| Обзор                                   | 6  |
| Основная информация                     | 6  |
| Размеры                                 | 6  |
| Скорость, вместимость и масса           | 6  |
| Размещение                              | 7  |
| Корпус и палуба                         | 7  |
| Информация о двигателе                  | 7  |
| ПОДРОБНОЕ ОПИСАНИЕ                      | 8  |
| 44' DeFever Overview                    | 8  |
| 44' DeFever Vessel Walkthrough          | 8  |
| 44' DeFever Accommodations              | 8  |
| 44' DeFever Salon                       | 8  |
| 44' DeFever Galley                      | 8  |
| 44' DeFever Dining                      | 9  |
| 44' DeFever Lower Helm                  | 9  |
| 44' DeFever Master Stateroom            | 9  |
| 44' DeFever Guest Stateroom             | 9  |
| 44' DeFever Laundry                     | 9  |
| 44' DeFever Flybridge                   | 9  |
| 44' DeFever Sundeck                     | 9  |
| 44' DeFever Audio/Visual Equipment      | 10 |
| 44' DeFever Electronics                 | 10 |
| 44' DeFever Electrical Equipment        | 10 |
| 44' DeFever Engine/Mechanical Equipment | 11 |
| 44' DeFever Deck Equipment              | 12 |
| 44' DeFever Tender                      | 12 |

|   |           |
|---|-----------|
| 44' DeFever Safety & Fire Protection        | 13        |
| 44' DeFever Exclusions                      | 13        |
| 44' DeFever Disclaimer                      | 13        |
| Исключения                                  | 13        |
| Отказ от ответственности                    | 13        |
| <b>ФОТОГРАФИИ</b>                           | <b>14</b> |
| 44' DeFever anchor windlass                 | 14        |
| 44' DeFever port aft profile                | 14        |
| 44' DeFever foredeck                        | 14        |
| 44' DeFever foredeck aft                    | 14        |
| 44' DeFever port side deck photo1           | 15        |
| 44' DeFever port side deck photo2           | 15        |
| 44' DeFever starboard side deck photo1      | 15        |
| 44' DeFever starboard side deck photo2      | 15        |
| 44' DeFever flybridge forward               | 16        |
| 44' DeFever flybridge aft                   | 16        |
| 44' DeFever flybridge port                  | 16        |
| 44' DeFever flybridge starboard             | 16        |
| 44' DeFever flybridge helm                  | 16        |
| 44' DeFever flybridge port aft seating      | 16        |
| 44' DeFever flybridge starboard aft seating | 17        |
| 44' DeFever tender davit                    | 17        |
| 44' DeFever sundeck                         | 17        |
| 44' DeFever sundeck port                    | 17        |
| 44' DeFever sundeck starboard               | 17        |
| 44' DeFever sundeck foreward                | 17        |
| 44' DeFever sundeck ice machine             | 18        |
| 44' DeFever swimplatform                    | 18        |
| 44' DeFever salon forward                   | 18        |

|  |    |
|--|----|
| 44' DeFever salon aft                              | 18 |
| 44' DeFever salon port                             | 18 |
| 44' DeFever salon starboard                        | 18 |
| 44' DeFever salon port seating                     | 19 |
| 44' DeFever galley photo1                          | 19 |
| 44' DeFever galley photo2                          | 19 |
| 44' DeFever galley photo3                          | 19 |
| 44' DeFever refrigeration                          | 19 |
| 44' DeFever lower helm photo1                      | 19 |
| 44' DeFever lower helm overhead electronics photo1 | 20 |
| 44' DeFever lower helm photo2                      | 20 |
| 44' DeFever lower helm overhead electronics photo2 | 20 |
| 44' DeFever master stateroom                       | 20 |
| 44' DeFever master stateroom port                  | 20 |
| 44' DeFever master stateroom starboard             | 20 |
| 44' DeFever master stateroom head                  | 21 |
| 44' DeFever master stateroom forward               | 21 |
| 44' DeFever master stateroom shower                | 21 |
| 44' DeFever guest stateroom                        | 21 |
| 44' DeFever guest stateroom head                   | 22 |
| 44' DeFever washer-dryer                           | 22 |
| 44' DeFever engine room aft                        | 22 |
| 44' DeFever engine room forward                    | 22 |
| 44' DeFever engine room starboard aft              | 23 |
| 44' DeFever port main engine                       | 23 |
| 44' DeFever port Racor fuel filter                 | 23 |
| 44' DeFever starboard main engine                  | 23 |
| 44' DeFever starboard Racor fuel filter            | 24 |
| 44' DeFever air conditioning system                | 24 |

---

|                                    |           |
|------------------------------------|-----------|
| 44' DeFever engine room sea chest  | 24        |
| 44' DeFever water heater           | 24        |
| 44' DeFever electrical panel       | 25        |
| 44' DeFever engine room tool chest | 25        |
| 44' DeFever battery charger        | 25        |
| 44' DeFever generator              | 25        |
| <b>КОНТАКТЫ</b>                    | <b>26</b> |
| Контактная информация              | 26        |
| Телефоны                           | 26        |
| Время работы                       | 26        |
| Адрес                              | 26        |

# ХАРАКТЕРИСТИКИ

## Обзор

Liberty is a classic 44' DeFever Offshore Cruiser in good condition. She offers Perkins main engines (Remanufactured port engine with only 250 hours since installation in 2007), 12.5kW Westerbeke generator installed in 2006 with only 380 hours, some updated electronics and newer custom salon drapes and flybridge cushions. Liberty is a Great Loop veteran. Sellers bought Liberty to cruise the Great Loop, but their plans have changed, so Liberty is now being offered for sale.

## Основная информация

|                                    |  |
|------------------------------------|--|
| <b>Тип судна:</b> Траулер          | <b>Подкатегория:</b> Sundeck               |
| <b>Модельный год:</b> 1985         | <b>Год постройки:</b> 1985                 |
| <b>Страна:</b> United States       | <b>Регистрационный номер:</b> JAT44149G585 |
| <b>Верх:</b> Radar Arch and Bimini | <b>Открытая палуба мостика:</b> Да         |

## Размеры

|                                     |   |
|-------------------------------------|---|
| <b>Длина общая:</b> 44' 0" (13.41m) | <b>Длина по ватерлинии:</b> 38' 6" (11.73m) |
| <b>Ширина:</b> 14' 9" (4.50m)       | <b>Мин. осадка:</b> 4' 7" (1.40m)           |
| <b>Макс. осадка:</b> 4' 7" (1.40m)  |   |

## Скорость, вместимость и масса

|  |   |
|--|---|
| <b>Крейс. скорость:</b> 8 Kts. (9 MPH)       | <b>Макс. скорость:</b> 9 Kts. (10 MPH)    |
| <b>Водоизмещение:</b> 44000 Pounds           | <b>Вместимость воды:</b> 364 Gallons      |
| <b>Вместимость сточного бака:</b> 35 Gallons | <b>Объем топливного бака:</b> 950 Gallons |

## Размещение

---

**Всего кают:** 2

**Всего коек:** 3

**Спальные места:** 4

**Всего ком. состава:** 2

## Корпус и палуба

---

**Материал корпуса:** Fiberglass

**Материал палубы:** Composite Fiberglass

**Цвет корпуса:** White

**Отделка корпуса:** Stainless Steel

**Дизайнер корпуса:** Arthur DeFever

## Информация о двигателе

---

**Двигатели:** 2

**Производитель:** Perkins

**Модель:** Range 4

**Тип двигателя:** Inboard

**Тип топлива:** Diesel

---

# ПОДРОБНОЕ ОПИСАНИЕ

---

## 44' DeFever Overview

---

Liberty is a classic 44' DeFever Offshore Cruiser in good condition. She offers Perkins main engines (Remanufactured port engine with only 250 hours since installation in 2007), 12.5kW Westerbeke generator installed in 2006 with only 380 hours, some updated electronics and newer custom salon drapes and flybridge cushions. Liberty is a Great Loop veteran. Sellers bought Liberty to cruise the Great Loop, but their plans have changed, so Liberty is now being offered for sale.

## 44' DeFever Vessel Walkthrough

---

Entering the salon from the sundeck, you find the under-counter refrigeration starboard aft, sleeper/sofa to starboard, lower helm and side deck access door starboard forward, galley port aft, side deck access door to starboard, wrap-around settee and table port forward. The master stateroom is aft and the guest stateroom is forward with access to the engine room.

## 44' DeFever Accommodations

---

Liberty offers a full beam aft master stateroom with ensuite head and a guest stateroom forward, which also has an ensuite head. The salon settee converts into a berth and the salon also offers a sleeper/sofa to starboard.

## 44' DeFever Salon

---

The large salon offers under-counter refrigeration starboard aft, sleeper/sofa to starboard, lower helm and side deck access door starboard forward, wrap-around settee (storage underneath), folding table with stools port forward, side deck access door to port and the galley (with extended countertop) port aft, teak parquet sole and large tinted side windows with custom custom drapes. Cushions and drapes are Sunbrella and were added in 2010. The settee also converts into a berth.

## 44' DeFever Galley

---

The galley on the 44' DeFever is located port aft in the salon and offers a side window and aft sliding window for plenty of light and ventilation. There is also plenty of counter space and storage. The forward countertop has been extended to make it a more comfortable bar area.

- Galley Maid Empress 3-burner electric cooktop and stove - GE microwave oven (2010) - Stainless steel sink - 2 X Kenmore under-counter refrigerator/freezers - Vitrofigo ice maker in the



---

sundeck wetbar (2014) - All cookware and cutlery included - Storage cabinets and drawers

---

## 44' DeFever Dining

---

Dining is available at the wrap-around settee and table in the salon.

---

## 44' DeFever Lower Helm

---

The lower helm is located starboard forward in the salon and offers a Pompanette helm seat and a side deck access door for easier docking and line handling.

---

## 44' DeFever Master Stateroom

---

The full beam aft master stateroom offers a centerline queen size berth (new mattress), hanging lockers, lighted walk-in closet, vanity/desk, teak parquet sole, ensuite head, nightstands, reading lights, 2 transom hatches and six portlights for loads of natural light and ventilation.

---

## 44' DeFever Guest Stateroom

---

The guest stateroom forward offers a v-berth with insert, 4 portlights and an overhead hatch for plenty of natural light and ventilation, teak parquet soles, privacy curtain, hanging locker, storage drawers and shelves, reading lights and ensuite head.

---

## 44' DeFever Laundry

---

- Whirlpool washer and dryer (2005)

---

## 44' DeFever Flybridge

---

The huge flybridge offers a full console forward with storage underneath, benchseats port and starboard, helm seat, stainless steel framed bimini, Radar arch, benchseats on each side aft with storage underneath, non-skid decks. Cushions were new in 2010.

---

## 44' DeFever Sundeck

---

Liberty's huge sundeck offers non-skid deck, hard top, deck furniture, BBQ grill in a storage locker with icemaker, aft door to the stainless steel and teak swimplatform ladder, bulwark doors on each side, same level side deck access.

---

## 44' DeFever Audio/Visual Equipment

---

Insignia flat screen TV in the salon

- Fusion MS-IP600 AM/FM/MP# player in the salon
- Audio speakers in the salon
- Samsung DVD-V4600 DVD/VHS player in the salon

---

## 44' DeFever Electronics

---

- Nobeltec 48nm Radar (2005)
- Ritchie Powerdamp magnetic compass at the lower helm
- Danforth Constellation magnetic compass on the flybridge
- Simrad R135 rudder angle indicator at the lower helm
- Simrad AP35 autopilot at the lower helm and flybridge remote panel
- Simrad FU50 follow up steering system on the flybridge
- Datamarine Corinthian Series S200DL depth sounder at the lower helm and on the flybridge
- Icom IC-M45 VHF at the lower helm
- Icom IC-M80 VHF on the flybridge
- Uniden ES UM525 VHF on the flybridge
- Dell ship's computer with Samsung SynchMaster 712N monitor and Nobeltec electronic chart software at the lower helm
- Ship's clock and barometer in the salon
- Intercom system

---

## 44' DeFever Electrical Equipment

---

Westerbeke 12.6BTD 12.6kW generator with 380 hours (2006)

- Coleman 800 watt inverter
- Charles 60 amp battery charger

- Lewco 40 amp battery charger
- 50 amp shore cord
- 3 X Group 27 house batteries (Room for seven batteries in battery bank box)
- 6 X Group 32 main engine start batteries
- Group 27 generator start battery
- Sterling Power ProSplit R battery management system (2010)

## **44' DeFever Engine/Mechanical Equipment**

---

Twin Perkins Range 4 240 hp main engines (Remanufactured engine on port side with approximately 250 hours, starboard has 3151 hours)

- Newage 401VR2 gearboxes
- Morse engine controls
- Glendinning synchronizer
- Spurs line cutters
- Fuel manifold
- Racor 900FG fuel filters with vacuum gauges for the main engines
- Racor 500FG fuel filter for the generator
- Oil change system
- Capilano hydraulic steering system
- Cruisair reverse cycle air conditioning/heating system (3 X 12,000BTU units) (salon unit new in 2014)
- Shurflo fresh water pump
- American Appliance Corp 10 gallon water heater
- Sea chest
- Tool box
- Raritan Crown electric heads (Rebuilt in 2010)
- All thru-hulls replaced in 2010

- Rudder bearings and bolts replaced in 2010

## 44' DeFever Deck Equipment

---

- Nilsson anchor windlass with foot controls
- Delta 44lb anchor with 280' 3/8" anchor chain
- Danforth 35lb anchor with 300' 3/4" nylon rode
- Stainless steel anchor roller
- Foredeck storage boxes
- Stainless steel deck hardware
- Stainless steel fender racks
- Teak cap rails on stainless steel stanchions
- Non-skid deck
- Boarding gates on each side
- Rod holders
- Boarding ladder
- Swimplatform
- Stainless steel & teak ladder from swimplatform to the sundeck
- Stainless steel swim ladder

## 44' DeFever Tender

---

- 2003 Avon 10'8" RIB tender
- Mercury 9.9hp outboard (2000)
- Tender davit

---

## 44' DeFever Safety & Fire Protection

---

Fireboy Model 200CG 1301 Halon engine room fire suppression system

- Fire extinguishers
- First Alert and Nighthawk smoke and carbon monoxide detectors
- 2 X Guest search lights
- Rule bilge pumps

---

## 44' DeFever Exclusions

---

Sellers' personal belongings

---

## 44' DeFever Disclaimer

---

The Company offers the details of this vessel in good faith but cannot guarantee or warrant the accuracy of this information nor warrant the condition of the vessel. A buyer should instruct his agents, or his surveyors, to investigate such details as the buyer desires validated. This vessel is offered subject to prior sale, price change, or withdrawal without notice.

---

## Исключения

---

При продаже яхты исключаются личные вещи владельца.

---

## Отказ от ответственности

---

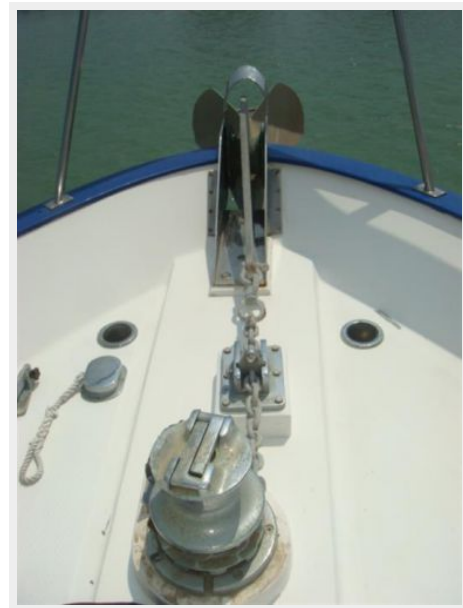
Компания предоставляет описание судна или яхты добросовестно, но не может гарантировать точность этой информации, а также не ручается за техническое состояние. Покупатель должен проинструктировать своих агентов или оценщиков исследовать представленную информацию более подробно, по собственному желанию. Продажа судна или яхты, изменение цены или снятие с продажи будет происходить без предварительного уведомления.

# ФОТОГРАФИИ

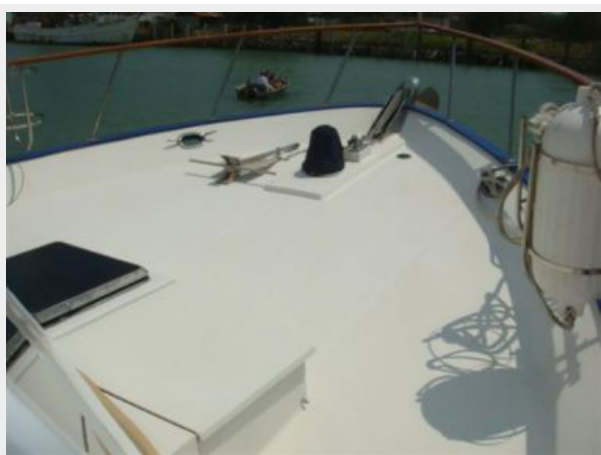
44' DeFever port aft profile



44' DeFever anchor windlass



44' DeFever foredeck



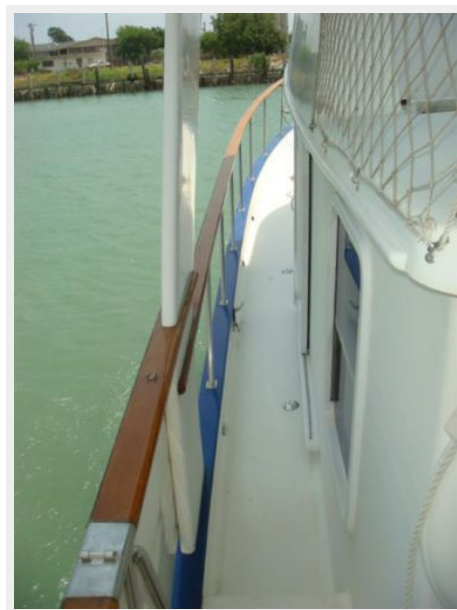
44' DeFever foredeck aft



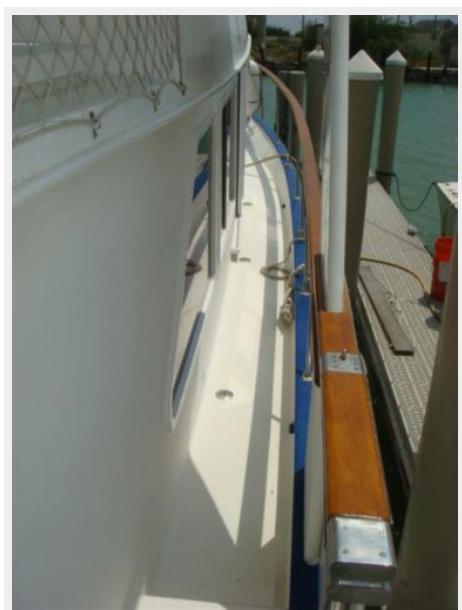
44' DeFever port side deck photo1



44' DeFever port side deck photo2



44' DeFever starboard side deck photo1



44' DeFever starboard side deck photo2



**44' DeFever flybridge forward**



**44' DeFever flybridge aft**



**44' DeFever flybridge port**



**44' DeFever flybridge starboard**



**44' DeFever flybridge helm**



**44' DeFever flybridge port aft seating**





**44' DeFever flybridge starboard aft seating**



**44' DeFever tender davit**



**44' DeFever sundeck**



**44' DeFever sundeck port**



**44' DeFever sundeck starboard**



**44' DeFever sundeck foreward**



**44' DeFever sundeck ice machine**



**44' DeFever swimplatform**



**44' DeFever salon forward**



**44' DeFever salon aft**



**44' DeFever salon port**



**44' DeFever salon starboard**



**44' DeFever salon port seating**



**44' DeFever galley photo1**



**44' DeFever galley photo2**



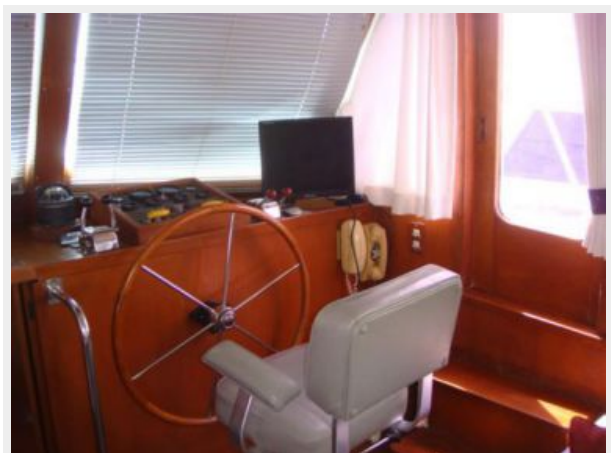
**44' DeFever galley photo3**



**44' DeFever refrigeration**



**44' DeFever lower helm photo1**



**44' DeFever lower helm photo2**



**44' DeFever lower helm overhead electronics photo1**



**44' DeFever lower helm overhead electronics photo2**



**44' DeFever master stateroom**



**44' DeFever master stateroom port**



**44' DeFever master stateroom starboard**



### 44' DeFever master stateroom head

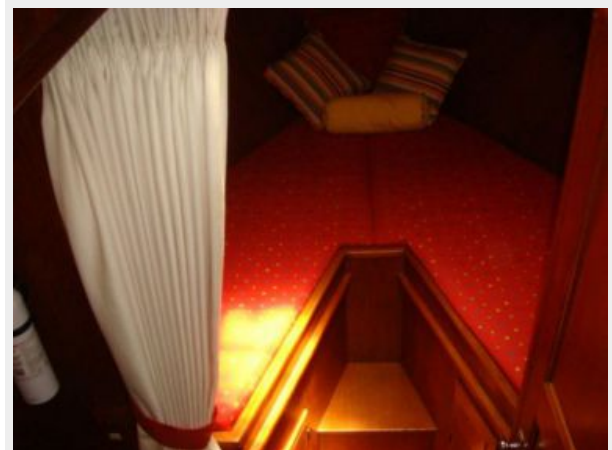
### 44' DeFever master stateroom forward



### 44' DeFever master stateroom shower



### 44' DeFever guest stateroom



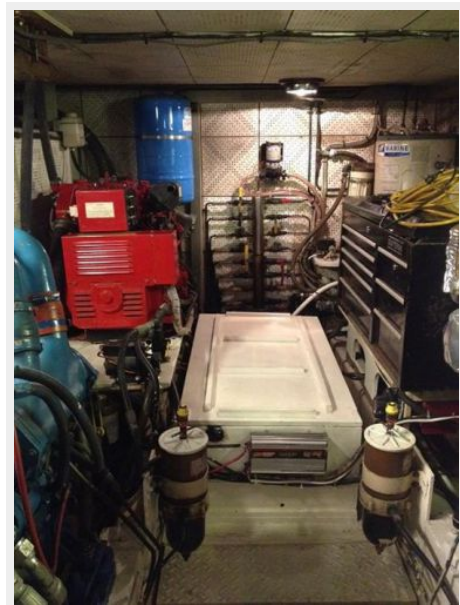
44' DeFever guest stateroom head



44' DeFever washer-dryer



44' DeFever engine room aft



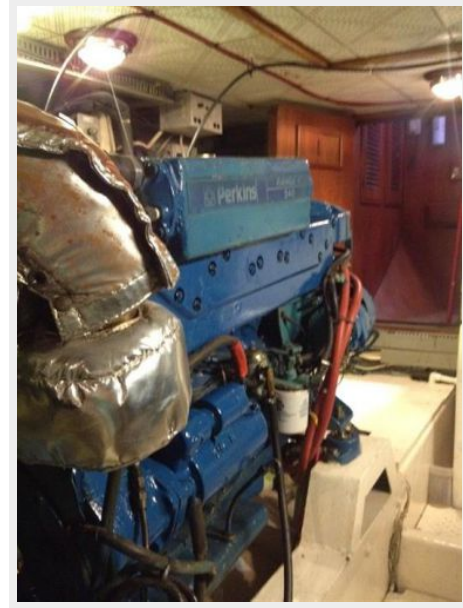
44' DeFever engine room forward



44' DeFever engine room starboard aft



44' DeFever port main engine



44' DeFever port Racor fuel filter



44' DeFever starboard main engine



44' DeFever starboard Racor fuel filter



44' DeFever air conditioning system



44' DeFever engine room sea chest



44' DeFever water heater





44' DeFever engine room tool chest



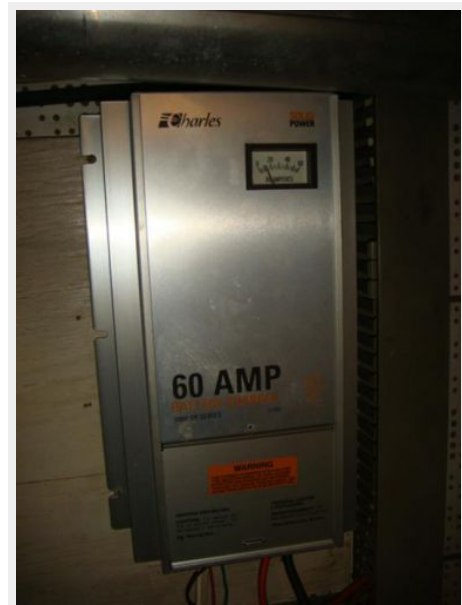
44' DeFever electrical panel



44' DeFever generator



44' DeFever battery charger



# КОНТАКТЫ

---

Андрей Шестаков (Andrey Shestakov) – ведущий яхтенный брокер отдела продаж яхт и судов компании Shestakov Yacht Sales Inc. Официальный представитель Shestakov Yacht Sales Inc. для русскоговорящих клиентов в центральном офисе компании в Майами/Форт Лодердейл/Флорида/США.

## Контактная информация

---

Email: [andrey@shestakovyachtsales.com](mailto:andrey@shestakovyachtsales.com)

Web: [shestakovyachtsales.com](http://shestakovyachtsales.com)

## Телефоны

---

Краснодарский край: **+7(918)465-66-44**

США, Майами, Флорида: **+1(954)274-4435**

## Время работы

---

Понедельник – Суббота: **9:00 - 21:00**  
EDT

Воскресенье: **Закрито**

## Адрес

---



Harbour Towne Marina, 850 NE 3rd St,  
STE 213, Dania, FL 33004