

VERA IV — DANISH YACHTS



Builder: DANISH YACHTS

Year Built: 2002

Model: Sloop

Price: PRICE ON APPLICATION

Location: Spain

LOA: 109' 3" (33.30m)

Max Draft: 10' 8" (3.25m)

Cruise Speed: 10 Kts. (12 MPH)

Max Speed: 12 Kts. (14 MPH)

Our experienced yacht broker, Andrey Shestakov, will help you choose and buy a yacht that best suits your needs Vera IV — DANISH YACHTS from our catalogue. Presently, at Shestakov Yacht Sales Inc., we have a wide variety of yachts available on our sale's list. We also work in close contact with all the big yacht manufacturers from all over the world.

If you would like to buy a yacht Vera IV — DANISH YACHTS or would like help answering any questions concerning purchasing, selling or chartering a yacht, please call +1(954)274-4435

TABLE OF CONTENTS

TABLE OF CONTENTS	2
SPECIFICATIONS	3
Overview	3
Basic Information	3
Dimensions	3
Speed, Capacities and Weight	3
Accommodations	4
Hull and Deck Information	4
Engine Information	4
PHOTOS	5
CONTACTS	10
Contact details	10
Telephones	10
Office hours	10
Address	10

SPECIFICATIONS

Overview

Vera IV is a 33.30m luxury yacht built by Danish Yachts in 2002, with refits in 2005 and 2012.

With naval architecture by Tony Castro, interior styling by Francois Zuretti and RINA and MCA classifications; she accommodates 6 guests in a master, a double and a twin cabin. Powered by Caterpillar engines, she has a cruising speed of 10 knots and can get to a top speed of 12 knots.

Basic Information

Category: Sloop

Sub Category: Cruising Sailboat

Model Year: 2002

Year Built: 2002

Refit Year: 2012

Refit Type: Full

Country: Spain

Dimensions

LOA: 109' 3" (33.30m)

Max Draft: 10' 8" (3.25m)

Speed, Capacities and Weight

Cruise Speed: 10 Kts. (12 MPH)

Cruise Speed Range: 5000

Max Speed: 12 Kts. (14 MPH)

Max Speed Range: 10 Kts.

Gross Tonnage: 155 Pounds

Water Capacity: 1004 Gallons

Holding Tank: 4000 Gallons

Fuel Capacity: 5337 Gallons

Accommodations

Total Cabins: 3

Sleeps: 6

Total Heads: 4

Crew Sleeps: 6

Hull and Deck Information

Hull Material: Steel

Deck Material: Teak

Hull Color: Dark Blue

Hull Designer: Tony Castro

Exterior Designer: Tony Castro

Interior Designer: Zuretti

Engine Information

Engines: 1

Manufacturer: Caterpillar

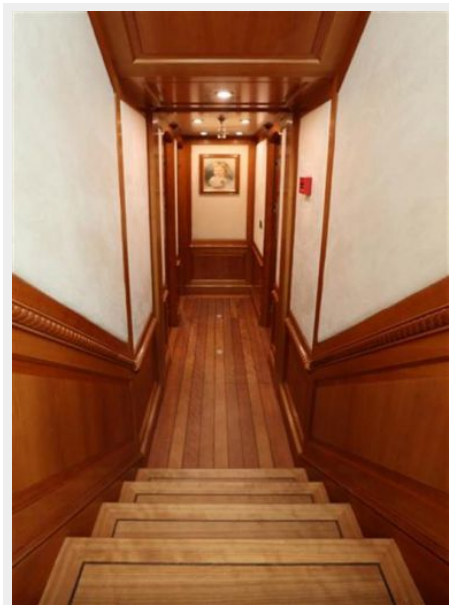
Model: 3406E-Dita

Fuel Type: Diesel

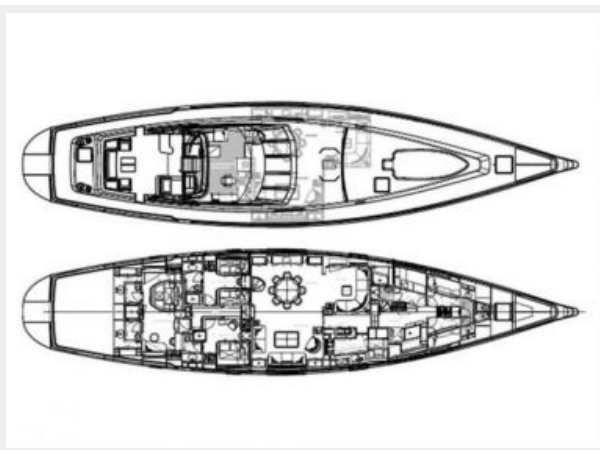
PHOTOS











CONTACTS

Andrey Shestakov, leading yacht broker of the sales department of Shestakov Yacht Sales Inc. Shestakov Yacht Sales Inc., the official representative of the Miami/Fort Lauderdale FL headquarters.

Contact details

Email: **andrey@shestakovyachtsales.com**

Web: shestakovyachtsales.com/en/

Telephones

USA: +1(954)274-4435

Office hours

Monday – Saturday: **9:00 - 21:00** EDT

Sunday: **closed**

Address



Harbour Towne Marina, 850 NE 3rd St,
STE 213, Dania, FL 33004