

ROMANZA — BENETTI



Судостроитель: BENETTI

Год постройки: 2008

Модель: Моторная яхта

Цена: ЦЕНА ЯХТЫ ПО ЗАПРОСУ

Местонахождение: United States

Длина общая: 120' 0" (36.58m)

Ширина: 25' 11" (7.90m)

Макс. осадка: 7' 11" (2.41m)

Крейс. скорость: 12 Kts. (14 MPH)

Макс. скорость: 15 Kts. (17 MPH)

Купить **ROMANZA — BENETTI** а также выбрать подходящую вам яхту из нашего каталога яхт вам поможет опытный яхтенный брокер Андрей Шестаков. На сегодняшний день компания **Shestakov Yacht Sales Inc.** имеет большое количество яхт в собственном списке продаж, а также тесно сотрудничает со всеми крупными яхтенными производителями по всему миру.

Для того чтобы купить яхту **ROMANZA — BENETTI** а также проконсультироваться по любому вопросу связанному с покупкой, продажей, чартером яхт позвоните по телефону **+7(918)465-66-44**.

ОГЛАВЛЕНИЕ

ОГЛАВЛЕНИЕ	2
ХАРАКТЕРИСТИКИ	4
Обзор	4
Основная информация	4
Размеры	4
Скорость, вместимость и масса	5
Размещение	5
Корпус и палуба	5
Информация о двигателе	5
ПОДРОБНОЕ ОПИСАНИЕ	6
Overview	6
Accommodations	6
Specifications	6
Galley	8
Communications and Navigation	8
Entertainment	8
Tenders and Water Sports Equipment	9
Deck Equipment	9
Broker Comments	9
Исключения	10
Отказ от ответственности	10
ФОТОГРАФИИ	11
Salon	11
Salon	11
Salon	11
salon	11
Salon	11
Salon Stairs	11

Stateroom Common Area	12
Dining	12
Dining	12
Galley	12
Galley	12
Master Stateroom	12
Master Stateroom	13
Master Head	13
Guest Stateroom	13
Guest Head	13
Guest Twin Stateroom	13
Helm	13
Skylounge Deck	14
Sundeck	14
Sundeck	14
Sundeck	14
Sundeck Jacuzzi	14
Swim Platform	14
Foredeck	15
Engine Room	15
GA	15
GA	15
GA	16
КОНТАКТЫ	17
Контактная информация	17
Телефоны	17
Время работы	17
Адрес	17

ХАРАКТЕРИСТИКИ

Обзор

ROMANZA represents a beautiful Benetti Classic Tri-deck 120' that is found in excellent condition. The Benetti 120' model is one of the most comfortable, sophisticated and popular vessels built and ROMANZA is the top of the fleet. Her 2015 refit included painting of the hull and reconditioning the entire exterior, changing from a light gray to white makes a great fresh look with the white superstructure. ROMANZA has had an extensive interior refit to include all new floors, furnishings, marble, redesign of saloon banisters and much more. In addition, all new exterior tables, cushions and furniture were added as well as a walk up bar installed on the sundeck. The Jacuzzi was renewed with beautiful teak surround and new raised sun pads. ROMANZA is an extraordinary example of Benetti's craftsmanship and features the five (option) cabin layout providing accommodations for 8/10 guests in 4/5 cabins depending on whether the boat is set with two twins or a twin cabin closet.

Основная информация

Тип судна: Моторная яхта

Подкатегория: Водоизмещение

Модельный год: 2008

Год постройки: 2008

Год обновления: 2015

Страна: United States

Размеры

Длина общая: 120' 0" (36.58m)

Ширина: 25' 11" (7.90m)

Макс. осадка: 7' 11" (2.41m)

Скорость, вместимость и масса

Крейс. скорость: 12 Kts. (14 MPH)

Дальность на крейсерской скорости:
3300

Макс. скорость: 15 Kts. (17 MPH)

Водоизмещение: 374000 Pounds

Чистый вес: 299 Pounds

Вместимость воды: 2217 Gallons

Объем топливного бака: 11097 Gallons

Размещение

Всего кают: 5

Спальные места: 10

Всего ком. состава: 7

Каюта капитана: Да

Каюты экипажа: 4

Койки экипажа: 7

Спальных мест экипажа: 7

Корпус и палуба

Материал корпуса: Fiberglass

Материал палубы: Teak

Комплектация корпуса: Full
Displacement

Дизайнер интерьера: John Kidd

Информация о двигателе

Двигатели: 2

Производитель: Caterpillar

Модель: C32

Тип двигателя: Inboard

Тип топлива: Diesel

ПОДРОБНОЕ ОПИСАНИЕ

Overview

ROMANZA represents a beautiful Benetti Classic Tri-deck 120' that is found in excellent condition. The Benetti 120' model is one of the most comfortable, sophisticated and popular vessels built and ROMANZA is the top of the fleet. Her 2015 refit included painting of the hull and reconditioning the entire exterior, changing from a light gray to white makes a great fresh look with the white superstructure. ROMANZA has had an extensive interior refit to include all new floors, furnishings, marble, redesign of saloon banisters and much more. In addition, new all exterior tables, cushions and furniture were added. The Jacuzzi was renewed as original from build with beautiful teak surround and new raised sun pads. ROMANZA is an extraordinary example of Benetti's craftsmanship and features the five (option) cabin layout providing accommodations for 8/10 guests in 4/5 cabins depending on whether the boat is set with two twins or a twin cabin closet. The Owner's Master cabin is located on the main deck with a spacious new designed bathroom forward with shower and tub. The master has a king berth with a closet and ample storage throughout complete with TV, DVD and entertainment systems. On the Lower Deck aft are four Guest Suites with two VIP cabins with queen berths, and two single guest cabins, all with en suite baths. One twin has been converted to a closet, but can be reconverted on short notice. The panoramic sundeck is fitted with a hardtop cover forward, BBQ, bar fridge, large Jacuzzi, sun pads, and sun lounges. The upper deck has a large exterior dining area for 10 guests with hardtop covered seating area, which guarantees the ideal setting to enjoy the perfect dining experience. There is additional seating on the deck for lounging, entertaining or just finding a spot to curl up with a book. The main deck has a beautiful sitting area perfect for lounging, watching the water sports or greeting guests. Her large swim platform is the perfect boarding point for water sports or simply getting on and off via tender or a dock. This area is also perfect for staging for snorkeling, diving or any gear needed from the large tender garage. ROMANZA has had the finest level of maintenance and only been used privately. It has an interior volume and exterior deck space that would rival much larger vessel. ROMANZA presents a great opportunity to go yachting on a minutes notice.

Accommodations

- 8/10 Guests in four ensuite cabins (Optional is a twin to closet)
- Full width master cabin on main deck, two double and two twin cabins on the lower deck
- Four cabins for seven crew

Specifications

Main Characteristics

- BUILDER: Benetti

- YEAR: 2008/2015
- LOA: 36.57m (120ft 0in)
- BEAM: 7.86m (25ft 11in)
- DRAFT: 2.22m (6ft 5in)
- GROSS TONS: 299 Tons
- NET TONS: 89 Tons
- DISPLACEMENT: 170t.
- NAVAL ARCHITECT: Benetti
- CAPACITIES CRUISE SPEED: 12 Knots (Approximate)
- MAXIMUM SPEED: 14 Knots (Approximate)
- RANGE: 2775 nm @ 12.5 knots / 3500 nm @ 9.5 knots
- FUEL CAPACITY: 42,290 L (11,171.85 US Gallons)
- WATER CAPACITY: 8,264 L (2,183 US Gallons)
- BLACK WATER CAPACITY: 2,794 L (738 US Gallons)
- GREY WATER CAPACITY: 1,786 L (471 US Gallons)

Machinery

- ENGINE MODEL: 2x C32 CAT 2312kW
- PROPULSION: PROP SHAFT
- GEARBOXES: ZF BW 2569 2 x Fixed Pitch 5 blade propellers
- STABILIZERS: VT Naiad zero stabilizers, Model 520 VT Naid (20 LHT proportional)

Generators

- GENERATORS: 2x Kohler 70kw
- HOURS: Starboard: 12,299 / Port: 11,888, as of October 2016
- ELECTRICITY: 220v 50Hz
- SHORE POWER: 380v
- BATTERIES: 24v Gel Batteries

Air Conditioning

- Condaria 288.000/ph reverse Cycle heating

Other Machinery

- Dirty Oil tank 546 litres
- Clean Oil tank 546 litres
- Koop Nautic 68hp bow thruster (Nautical 20 HT)
- 2x MC8 duplex Idromar watermakers, Reverse osmosis 11,000 litres per day
- Racor fuel filters
- Jet/Vacuum Sanitary System
- Hamman Waste Treatment
- Kinetica domestic water purification system, Octo Marine
- Cathelco anti-corrosion and biological system

Galley

- 2x Friggit built-in cold rooms, fridge/freezers
- 1x General Electric Commercial convection/microwave
- 1x Miele dishwasher in galley
- 1x Dumb Waiter connected to upper deck
- 2x Miele washers and dryers
- 3x Bars, each bar fitted with one fridge and one icemaker
- 1x 4-burner Miele range
- 1x Miele dishwasher in upper deck bar
- 1x Baumatic 90cm Commercial electric oven

Communications and Navigation

Communication

- VSAT SAILOR Sat C
- Wave WiFi Internal phone system throughout yacht
- Seatel 4006 vsat with WiFi throughout entire yacht
- SAILOR RT 5022 VHF in wheelhouse
- Crew call system throughout
- PABX for external & internal communications with 2x GSM cellular phones and intercom

Navigation Equipment

- Plath NaviPilot V Autopilot
- Furuno Navnet FR1954 Radar BB, 4' antenna
- B & G Hydra 2000 Wind instruments, Airmar Weather Station
- Northrop Grumman: Type 2483 Compass
- Kahlenberg Horn
- Furuno NX-700 Navtex
- Furuno GP36 GPS
- Airmar, depth, speed and temp
- Sperry Navigat / MK2 Optical Solution
- Plath Rudder Indicator
- Furuno RD-30 Repeater and GPS
- Furuno RD-30 Repeater in Captain's cabin

Entertainment

- 1x TV Sony Plasma 62" in main salon
- 1x TV Sony Plasma 48" in upper lounge
- 1x TV Sony Plasma 40" LCD exterior in upper deck

- Satellite TV - USA/Direct TV / Europe/Sky TV
- WiFi 4G and/or VSAT, and/or WiFi, or Hard Wired
- Extensive up-to-date computer operated maintenance and inventory system
- 1x TV Sony Plasma 48" in master cabin
- 1x TV Sony Plasma 24" in each guest cabin
- 1x TV Sony 20" Plasma TV + DVD in each crew cabin
- 1x CD player, DVD player in crew cabins, and crew mess

Tenders and Water Sports Equipment

- 1 x Bauer Dive compressor
- Full inventory of waterskis and snorkeling equipment
- 1 x 3.5 meter Yamaha GP 1300R Jet ski, HIN: US-YAMA3344C212
- 2 x Sea Doo Scooters

Deck Equipment

- 2 x 225kg stainless steel anchors
- 5000w Muir, remote and foot controlled windlasses
- 2 x 137m chain
- Pincraft swimming ladder
- Night time covers throughout
- Gaggenau electric BBQ
- Large chaise lounge on sky lounge
- Bathing platform on garage door when door is open
- 2 x 2000w Muir capstans (major overhaul 2016)
- 4.5m x 0.6m Pincraft passarelle
- Bridge windshield exist/only side rain curtains

Broker Comments

ROMANZA is a beautiful 120' Benetti that has been kept to the highest standards. Her newly painted white hull and fully reconditioned exterior makes ROMANZA stand out in any port or marina. ROMANZA was originally built as a five stateroom layout, but has been modified to have one twin cabin made into an extended closet. All woodwork and components have been preserved to be reinstalled to converting back to original twins berth layout on short notice. ROMANZA has had an extensive interior refit to include all new floors, furnishings, marble, redesign of saloon banisters and much more. The exterior has also been redone with new exterior coffee tables, cushions, furniture, and a walk up bar installed on the sun deck along with new raised sun pads. In addition to all the interior and exterior work, ROMANZA engaged into a mechanical refit to include service on mains and generators, all air conditioner service, and

service of all pumps and motors. ROMANZA would be the perfect yacht for private or charter uses. If given the opportunity to inspect ROMANZA you will not be disappointed in what you see for care and condition.

Исключения

При продаже яхты исключаются личные вещи владельца.

Отказ от ответственности

Компания предоставляет описание судна или яхты добросовестно, но не может гарантировать точность этой информации, а также не ручается за техническое состояние. Покупатель должен проинструктировать своих агентов или оценщиков исследовать представленную информацию более подробно, по собственному желанию. Продажа судна или яхты, изменение цены или снятие с продажи будет происходить без предварительного уведомления.

ФОТОГРАФИИ

Salon



Salon



Salon



salon



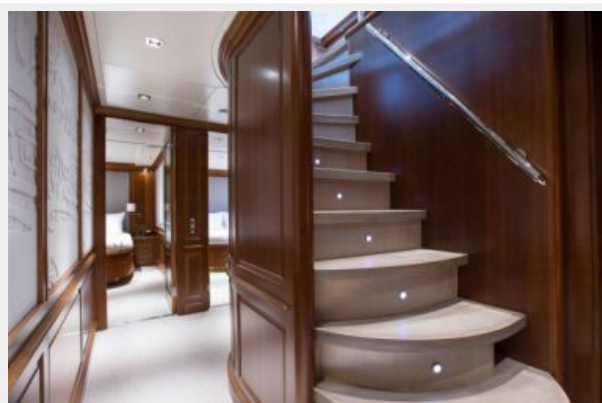
Salon



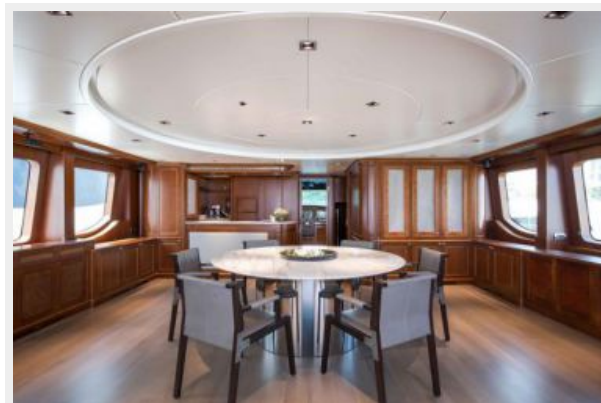
Salon Stairs



Stateroom Common Area



Dining



Dining



Galley



Galley



Master Stateroom



Master Stateroom



Master Head



Guest Stateroom



Guest Head



Guest Twin Stateroom



Helm



Skylounge Deck



Sundeck



Sundeck



Sundeck



Sundeck Jacuzzi



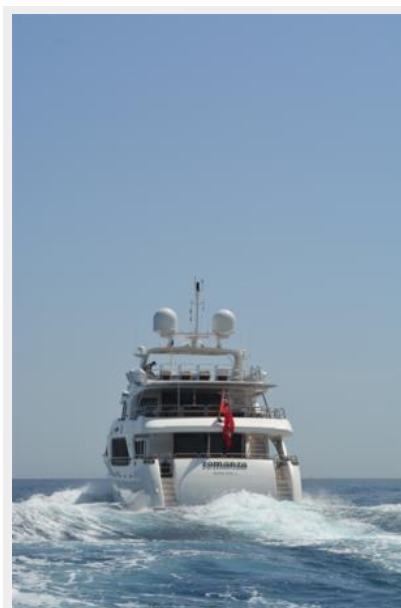
Swim Platform



Foredeck



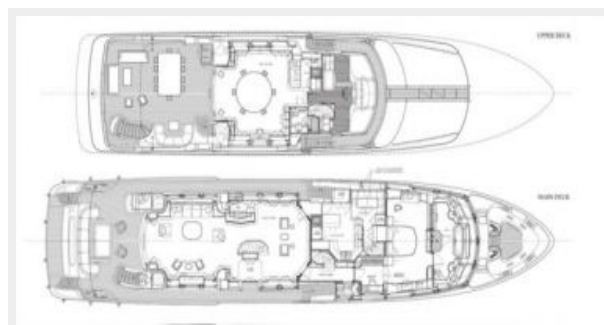
Engine Room



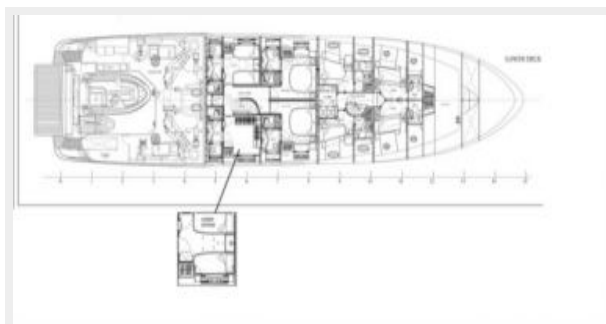
GA



GA



GA



КОНТАКТЫ

Андрей Шестаков (Andrey Shestakov) – ведущий яхтенный брокер отдела продаж яхт и судов компании Shestakov Yacht Sales Inc. Официальный представитель Shestakov Yacht Sales Inc. для русскоговорящих клиентов в центральном офисе компании в Майами/Форт Лодердейл/Флорида/США.

Контактная информация

Email: andrey@shestakovyachtsales.com

Web: shestakovyachtsales.com

Телефоны

Краснодарский край: **+7(918)465-66-44**

США, Майами, Флорида: **+1(954)274-4435**

Время работы

Понедельник – Суббота: **9:00 - 21:00**
EDT

Воскресенье: **Закрито**

Адрес



Harbour Towne Marina, 850 NE 3rd St,
STE 213, Dania, FL 33004