

## TAVIA — POST



**Builder:** POST

**Year Built:** 2002

**Model:** Motor Yacht

**Price:** PRICE ON APPLICATION

**Location:** United States

**LOA:** 50' 0" (15.24m)

**Beam:** 16' 11" (5.16m)

**Min Draft:** 4' 6" (1.37m)

**Cruise Speed:** 30 Kts. (35 MPH)

**Max Speed:** 35 Kts. (40 MPH)

Our experienced yacht broker, Andrey Shestakov, will help you choose and buy a yacht that best suits your needs Tavia — POST from our catalogue. Presently, at Shestakov Yacht Sales Inc., we have a wide variety of yachts available on our sale's list. We also work in close contact with all the big yacht manufacturers from all over the world.

If you would like to buy a yacht Tavia — POST or would like help answering any questions concerning purchasing, selling or chartering a yacht, please call +1(954)274-4435

# TABLE OF CONTENTS

|                              |    |
|------------------------------|----|
| TABLE OF CONTENTS            | 2  |
| SPECIFICATIONS               | 5  |
| Overview                     | 5  |
| Basic Information            | 5  |
| Dimensions                   | 5  |
| Speed, Capacities and Weight | 5  |
| Accommodations               | 5  |
| Hull and Deck Information    | 6  |
| Engine Information           | 6  |
| DETAILED INFORMATION         | 7  |
| Interior Layout              | 7  |
| Galley                       | 7  |
| Heads                        | 8  |
| Bridge / Helm                | 8  |
| Deck Equipment               | 8  |
| Cockpit area                 | 9  |
| Electronics                  | 9  |
| Electrical System            | 10 |
| Water System                 | 10 |
| Engine Room                  | 10 |
| Remarks                      | 11 |
| Exclusions                   | 11 |
| Disclaimer                   | 11 |
| PHOTOS                       | 12 |
| Starboard                    | 12 |
| Aft                          | 12 |
| Portside                     | 12 |
| Tender                       | 12 |

|                                 |    |
|---------------------------------|----|
| Windlass                        | 12 |
| Hardtop                         | 12 |
| Looking forward                 | 13 |
| Bridge access                   | 13 |
| Forward                         | 13 |
| Helm                            | 13 |
| Bridge                          | 13 |
| Helm seats                      | 13 |
| Cockpit storage                 | 14 |
| Cockpit                         | 14 |
| Teak Cockpit                    | 14 |
| Tackle center                   | 14 |
| Engine room access              | 14 |
| Cockpit refrigerator / freezer  | 14 |
| Inverter remote                 | 15 |
| Companionway                    | 15 |
| Galley                          | 15 |
| Galley refrigerator             | 15 |
| Settee, starboard               | 15 |
| Salon, forward                  | 15 |
| Salon, aft                      | 16 |
| Master stateroom                | 16 |
| Master stateroom                | 16 |
| Master hanging lockers          | 16 |
| Head, port                      | 16 |
| Shower, port                    | 16 |
| Stateroom, port                 | 17 |
| Stateroom, port, hanging locker | 17 |
| Stateroom, forward, upper berth | 17 |

|                    |           |
|--------------------|-----------|
| Stateroom, forward | 17        |
| Master head vanity | 17        |
| Laundry bin        | 17        |
| Master head        | 18        |
| Dryer              | 18        |
| Crash pump         | 18        |
| Electrical panel   | 18        |
| Engine hour meter  | 18        |
| Engine room        | 18        |
| Engine room        | 19        |
| Engine room        | 19        |
| Engine room        | 19        |
| Engine room        | 19        |
| Engine room        | 19        |
| Engine room        | 19        |
| Fuel valves        | 19        |
| Gen set hours      | 20        |
| Gen set            | 20        |
| Gen set            | 20        |
| Thru hulls         | 20        |
| Utility room       | 20        |
| <b>CONTACTS</b>    | <b>21</b> |
| Contact details    | 21        |
| Telephones         | 21        |
| Office hours       | 21        |
| Address            | 21        |

---

# SPECIFICATIONS

---

## Overview

---

### Basic Information

---

**Category:** Motor Yacht

**Sub Category:** Convertible

**Model Year:** 2003

**Year Built:** 2002

**Country:** United States

**Vessel Top:** 2363

**Fly Bridge:** Yes

**Cockpit:** Yes

### Dimensions

---

**LOA:** 50' 0" (15.24m)

**Beam:** 16' 11" (5.16m)

**Min Draft:** 4' 6" (1.37m)

**MFG Length:** 50' 0" (15.24m)

### Speed, Capacities and Weight

---

**Cruise Speed:** 30 Kts. (35 MPH)

**Max Speed:** 35 Kts. (40 MPH)

**Displacement:** 57122 Pounds

**Water Capacity:** 240 Gallons

**Holding Tank:** 42 Gallons

**Fuel Capacity:** 870 Gallons

### Accommodations

---

**Total Cabins:** 3

**Total Berths:** 5

**Sleeps:** 6

**Total Heads:** 2

---

## Hull and Deck Information

---

**Hull Material:** Fiberglass

## Engine Information

---

**Engines:** 2

**Manufacturer:** MAN

**Model:** D2840

**Engine Type:** Inboard

**Fuel Type:** Diesel

---

# DETAILED INFORMATION

---

## Interior Layout

---

The 50' Post has a large salon with an over sized L shaped settee to port with storage below. It is over 7' long along the port side. There is a coffee table inboard of the settee with a lot of storage inside. The starboard side of salon has the electrical panel, with plenty of storage below. Going forward is a swivel barrel chair. Forward of this is a large L shaped settee that will seat 5, and if you pull up the barrel chair that makes 6. This Post has the over sized optional dinette table that you can fit 7 will another chair.

Forward of the dinette is the entertainment center, with the optional 32' TV with VCR, DVD and stereo system along with a Bose surround sound system.

Down a few steps to the port is the L shaped galley with a stand up refrigerator freezer with ice maker. The chef can be preparing a meal, but still be include in the same area as family and guests for conversation.

Moving forward and down a few more steps is the main stateroom companion way. The master stateroom is to starboard with a full island berth. The stateroom has plenty of storage and a good size high hanging locker. There is a full head with stall shower forward of master stateroom with private entrance. There is also more storage cabinets in the head and also in the stall shower along with a large laundry bin. The master stateroom and head run off of one of the zone AC units. There is also a TV in the stateroom. The master berth pops up for a very large storage area.

There is a port bunk room with an upper and lower berth across the companion way and has its own A/C fan controls that run off the salon A/C. There is a tall hanging locker with under the bunk drawer storage. There is also a cabinet that goes aft into the under galley storage from the bunk room.

Moving forward in the companion way on the port is one of the two entrance doors to the second head. This is also a full head with a large linen closet, and also another locker in the stall shower. There is plenty of storage above and below the vanity. The A/C for this head runs off the forward cabin. All closets are cedar lined.

The forward cabin has crisscrossing berths, with the one on the starboard being the optional large double berth. The single bunk on the port is up higher. There is a short hanging locker under the single berth, and drawers under the other berth. Above the starboard are more storage cabinets. The forward stateroom has its own A/C zone that also goes into the guest head.

There is a laundry locker in the forward stateroom that has a dryer on the top with storage below. This Post does not have the washer unit on it, but is set up for one, with plumbing and electrical.

---

## Galley

---

- 3-Burner Princess cook top
- Power ventilation
- Discrete trash receptacle
- Corian solid surfaces throughout
- Moen faucet
- Sharp convection/microwave oven
- Full size refrigerator/freezer, with ice maker
- Optional teak facing on refrigerator/freezer
- Instant hot water.
- Optional teak & holly flooring
- Huge storage below floor
- Abundant storage and cabinetry
- GFI protected outlets

---

## Heads

---

- Raritan fresh water electric heads with built-in macerators
- Optional teak and holly floors
- 42 gallon holding tank with macerator for overboard discharge when legal, and also a deck pipe for pump out
- Holding tank gauge

---

## Bridge / Helm

---

- Factory hardtop
- 4 sided Costa Clear enclosure—new 2012
- Locking bridge access way
- High back helm & companion seats
- Bench seating forward of helm, and port side of helm, with storage under
- Halogen cockpit lighting
- Remote spotlight
- Man engine instrumentation at helm
- Optional single lever pod helm
- Optional power Hydraulic steering
- Stainless wheel
- Abundant storage on bridge
- Fresh water wash-down
- Aluminum rocket launcher (6) aft
- Optional hard top hatch

---

## Deck Equipment

---



- 1000 LBS tender davit, 120 volt AC
- Tender chocks
- 13' Novurania tender with 40hp Honda with cover
- Bow pulpit
- Anchor windless with foot control on deck and remote on bridge
- Cushions for the bow seat

---

## Cockpit area

---

- Fiberglass swim platform
- Stainless boarding ladder
- Transom door for easy access
- Teak cockpit sole
- (4) Lee rod holders in gunnels
- (2) Huge storage/fish boxes in cockpit
- Dockside water inlet w/regulator
- Cablemaster shore power retract
- Freshwater wash-down
- Saltwater wash-down
- Stereo sound speakers
- Courtesy lighting
- Underwater lights
- Access to rudders/transom
- Access to engine room
- Cockpit freezer/ refrigerator to starboard
- Access to bridge to port
- Rigging station/sink/lockers/drawers to port
- Corian folding cockpit tabl
- Aft and side hawser pipes

---

## Electronics

---

- Ritchie power damp compass
- Furuno NavNet 12 kw, 72 mile radar with 12 " screen
- Furuno 14" touch chart/radar/sounder screen, new 2012
- Simrad Ap 20 Auto pilot
- Furuno RD-30 GPS
- Icom M604 VHF Radio, New 2014
- Glendenning engine synchronizers
- RCL-100 Point Pad remote spotlight
- Clarion Stereo/CD on bridge
- Bose stereo sound system

- JVC CD/DVD player auto changer
- JVC Sirius satellite radio
- JVC RX 7020 Audio/Video controller
- KVH Trac Vision 4 Sat TV antennae
- 3 Separate Sat TV receivers one for each TV
- 3 TV's
- Mitsubishi Turbo drive VHS player
- Intercom phone bridge to salon
- Cockpit stereo speakers

---

## Electrical System

---

- 50 amp power cord, with Glendenning power reel
- Onan genset with sound box, 1240 hours
- (2) Sets of start batteries
- (1) Set of house batteries
- (1) Genset battery
- Underwater lights
- Refrigerator/Freezer in cockpit 120 AC
- Refrigerated step box 120AC
- Xantrex Sinewave inverter with remote 3-zone air conditioning with reverse heat

---

## Water System

---

- 20-Gallon stainless hot water heater
- Optional 12 volt fresh water pump
- 120 Volt fresh water pump
- Dock side water connection
- Cockpit salt water wash down
- Cockpit fresh water wash down
- Flybridge fresh water wash down
- Fresh water tank gauge

---

## Engine Room

---

- Entire engine room is awlgriped
- Fuel transfer pump,
- Optional fuel valves.
- Access to AC compressors
- Reverse auto oil change
- Racor fuel separators for main engines and gen set

- Crash pump
- Dripless shaft logs
- 2.5" stainless shafts
- Man D2840 LE407 engines 600 hrs
- ZF transmissions ZF350
- Sea Fire Halon system
- Xantrex Sinewave inverter, with remote in Salon
- Westerbeke 15KW genset with hush box
- 1240 hrs on genset
- Glenndinining CableMaster
- Oil changing pump for main engines and gen set

---

## Remarks

---

This is one of the nicer Post's around. The interior has been kept in very good condition. This 50' Post is one of the best laid out convertibles on the market. Tavia is set up for cruising, but has the needs other than outriggers and a chair for fishing.

This is a low hour Post with up graded 860 Mans. You can cruise this boat at 30 knots and be burning well under 90 gallons per hours. The fuel and water tankage makes for long cruising without having to get on the fuel dock all the time.

I am a 50' Post owner. I have owned my Post since new in 2000 and and my family loved our Post. I know the Post's 50's inside and out and if you are in the market for a convertible in this size range please give me a call to talk about the possibility of you being the next owner of this nice Post.

---

## Exclusions

---

Owner's personal belongings.

---

## Disclaimer

---

The Company offers the details of this vessel or yacht in good faith but cannot guarantee or warrant the accuracy of this information nor warrant the condition of the vessel. A buyer should instruct his representatives, agents, or his surveyors, to investigate such details as the buyer desires validated. This vessel or yacht is offered subject to prior sale, price change, or withdrawal without notice.

# PHOTOS

**Starboard**



**Aft**



**Portside**



**Tender**



**Windlass**



**Hardtop**



**Looking forward**



**Bridge access**



**Forward**



**Helm**



**Bridge**



**Helm seats**



**Cockpit storage**



**Cockpit**



**Teak Cockpit**



**Tackle center**



**Engine room access**



**Cockpit refrigerator / freezer**



**Inverter remote**



**Companionway**



**Galley**



**Galley refrigerator**



**Settee, starboard**



**Salon, forward**



**Salon, aft**



**Master stateroom**



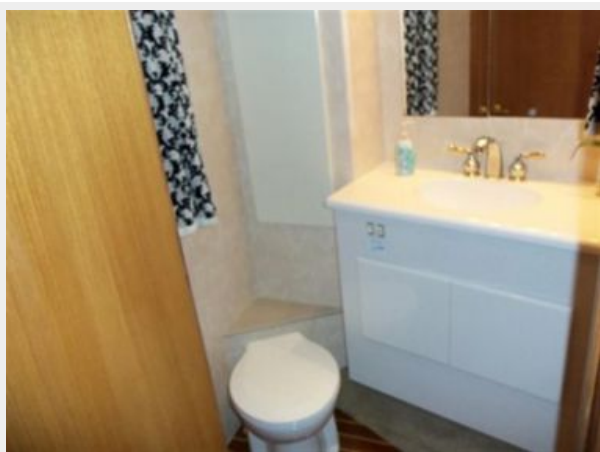
**Master stateroom**



**Master hanging lockers**



**Head, port**



**Shower, port**





**Stateroom, port**



**Stateroom, port, hanging locker**



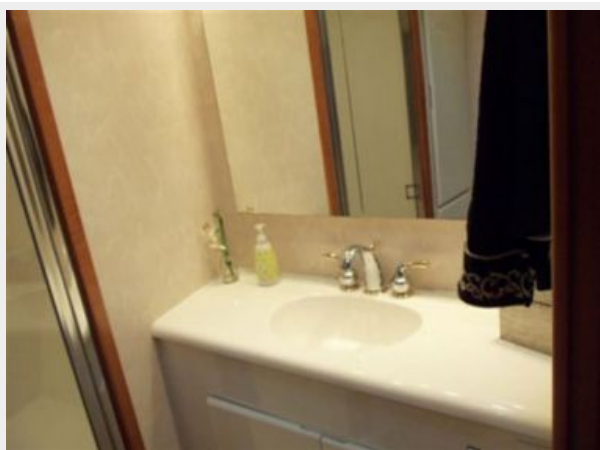
**Stateroom, foward, upper berth**



**Stateroom, forward**



**Master head vanity**



**Laundry bin**



**Master head**



**Dryer**



**Crash pump**



**Electrical panel**



**Engine hour meter**



**Engine room**



**Engine room**



**Engine room**



**Engine room**



**Engine room**



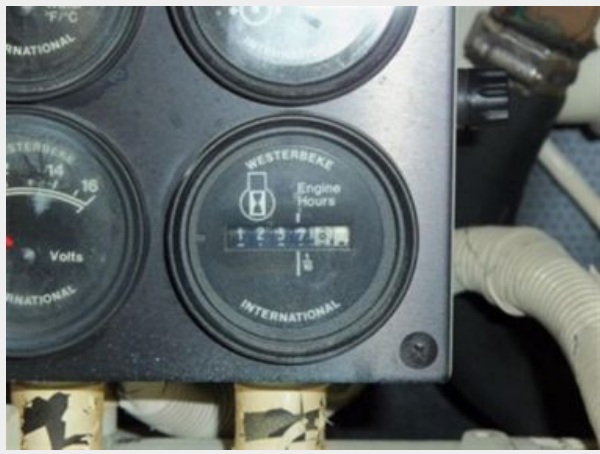
**Engine room**



**Fuel valves**



**Gen set hours**



**Gen set**



**Gen set**



**Thru hulls**



**Utility room**



# CONTACTS

---

Andrey Shestakov, leading yacht broker of the sales department of Shestakov Yacht Sales Inc. Shestakov Yacht Sales Inc., the official representative of the Miami/Fort Lauderdale FL headquarters.

## Contact details

---

Email: [andrey@shestakovyachtsales.com](mailto:andrey@shestakovyachtsales.com)

Web: [shestakovyachtsales.com/en/](http://shestakovyachtsales.com/en/)

## Telephones

---

USA: +1(954)274-4435

## Office hours

---

Monday – Saturday: **9:00 - 21:00** EDT

Sunday: **closed**

## Address

---



Harbour Towne Marina, 850 NE 3rd St,  
STE 213, Dania, FL 33004