

TAVIA — POST



Судостроитель: POST

Год постройки: 2002

Модель: Моторная яхта

Цена: **ЦЕНА ЯХТЫ ПО ЗАПРОСУ**

Местонахождение: United States

Длина общая: 50' 0" (15.24m)

Ширина: 16' 11" (5.16m)

Мин. осадка: 4' 6" (1.37m)

Крейс. скорость: 30 Kts. (35 MPH)

Макс. скорость: 35 Kts. (40 MPH)

Купить Tavia — POST а также выбрать подходящую вам яхту из нашего каталога яхт вам поможет опытный яхтенный брокер Андрей Шестаков. На сегодняшний день компания Shestakov Yacht Sales Inc. имеет большое количество яхт в собственном списке продаж, а также тесно сотрудничает со всеми крупными яхтенными производителями по всему миру.

Для того чтобы купить яхту Tavia — POST а также проконсультироваться по любому вопросу связанному с покупкой, продажей, чартером яхт позвоните по телефону **+7(918)465-66-44**.

ОГЛАВЛЕНИЕ

ОГЛАВЛЕНИЕ	2
ХАРАКТЕРИСТИКИ	5
Обзор	5
Основная информация	5
Размеры	5
Скорость, вместимость и масса	5
Размещение	5
Корпус и палуба	6
Информация о двигателе	6
ПОДРОБНОЕ ОПИСАНИЕ	7
Interior Layout	7
Galley	7
Heads	8
Bridge / Helm	8
Deck Equipment	8
Cockpit area	9
Electronics	9
Electrical System	10
Water System	10
Engine Room	10
Remarks	11
Исключения	11
Отказ от ответственности	11
ФОТОГРАФИИ	12
Starboard	12
Aft	12
Portside	12
Tender	12

Windlass	12
Hardtop	12
Looking forward	13
Bridge access	13
Forward	13
Helm	13
Bridge	13
Helm seats	13
Cockpit storage	14
Cockpit	14
Teak Cockpit	14
Tackle center	14
Engine room access	14
Cockpit refrigerator / freezer	14
Inverter remote	15
Companionway	15
Galley	15
Galley refrigerator	15
Settee, starboard	15
Salon, forward	15
Salon, aft	16
Master stateroom	16
Master stateroom	16
Master hanging lockers	16
Head, port	16
Shower, port	16
Stateroom, port	17
Stateroom, port, hanging locker	17
Stateroom, foward, upper berth	17

Stateroom, forward	17
Master head vanity	17
Laundry bin	17
Master head	18
Dryer	18
Crash pump	18
Electrical panel	18
Engine hour meter	18
Engine room	18
Engine room	19
Engine room	19
Engine room	19
Engine room	19
Engine room	19
Engine room	19
Fuel valves	19
Gen set hours	20
Gen set	20
Gen set	20
Thru hulls	20
Utility room	20
КОНТАКТЫ	21
Контактная информация	21
Телефоны	21
Время работы	21
Адрес	21

ХАРАКТЕРИСТИКИ

Обзор

Основная информация

Тип судна: Моторная яхта	Подкатегория: Convertible
Модельный год: 2003	Год постройки: 2002
Страна: United States	Верх: 2363
Открытая палуба мостика: Да	Кубрик: Да

Размеры

Длина общая: 50' 0" (15.24m)	Ширина: 16' 11" (5.16m)
Мин. осадка: 4' 6" (1.37m)	Длина привального бруса: 50' 0" (15.24m)

Скорость, вместимость и масса

Крейс. скорость: 30 Kts. (35 MPH)	Макс. скорость: 35 Kts. (40 MPH)
Водоизмещение: 57122 Pounds	Вместимость воды: 240 Gallons
Вместимость сточного бака: 42 Gallons	Объем топливного бака: 870 Gallons

Размещение

Всего кают: 3	Всего коек: 5
Спальные места: 6	Всего ком. состава: 2

Корпус и палуба

Материал корпуса: Fiberglass

Информация о двигателе

Двигатели: 2

Производитель: MAN

Модель: D2840

Тип двигателя: Inboard

Тип топлива: Diesel

ПОДРОБНОЕ ОПИСАНИЕ

Interior Layout

The 50' Post has a large salon with an over sized L shaped settee to port with storage below. It is over 7' long along the port side. There is a coffee table inboard of the settee with a lot of storage inside. The starboard side of salon has the electrical panel, with plenty of storage below. Going forward is a swivel barrel chair. Forward of this is a large L shaped settee that will seat 5, and if you pull up the barrel chair that makes 6. This Post has the over sized optional dinette table that you can fit 7 will another chair.

Forward of the dinette is the entertainment center, with the optional 32' TV with VCR, DVD and stereo system along with a Bose surround sound system.

Down a few steps to the port is the L shaped galley with a stand up refrigerator freezer with ice maker. The chef can be preparing a meal, but still be include in the same area as family and guests for conversation.

Moving forward and down a few more steps is the main stateroom companion way. The master stateroom is to starboard with a full island berth. The stateroom has plenty of storage and a good size high hanging locker. There is a full head with stall shower forward of master stateroom with private entrance. There is also more storage cabinets in the head and also in the stall shower along with a large laundry bin. The master stateroom and head run off of one of the zone AC units. There is also a TV in the stateroom. The master berth pops up for a very large storage area.

There is a port bunk room with an upper and lower berth across the companion way and has its own A/C fan controls that run off the salon A/C. There is a tall hanging locker with under the bunk drawer storage. There is also a cabinet that goes aft into the under galley storage from the bunk room.

Moving forward in the companion way on the port is one of the two entrance doors to the second head. This is also a full head with a large linen closet, and also another locker in the stall shower. There is plenty of storage above and below the vanity. The A/C for this head runs off the forward cabin. All closets are cedar lined.

The forward cabin has crisscrossing berths, with the one on the starboard being the optional large double berth. The single bunk on the port is up higher. There is a short hanging locker under the single berth, and drawers under the other berth. Above the starboard are more storage cabinets. The forward stateroom has its own A/C zone that also goes into the guest head.

There is a laundry locker in the forward stateroom that has a dryer on the top with storage below. This Post does not have the washer unit on it, but is set up for one, with plumbing and electrical.

Galley

- 3-Burner Princess cook top
- Power ventilation
- Discrete trash receptacle
- Corian solid surfaces throughout
- Moen faucet
- Sharp convection/microwave oven
- Full size refrigerator/freezer, with ice maker
- Optional teak facing on refrigerator/freezer
- Instant hot water.
- Optional teak & holly flooring
- Huge storage below floor
- Abundant storage and cabinetry
- GFI protected outlets

Heads

- Raritan fresh water electric heads with built-in macerators
- Optional teak and holly floors
- 42 gallon holding tank with macerator for overboard discharge when legal, and also a deck pipe for pump out
- Holding tank gauge

Bridge / Helm

- Factory hardtop
- 4 sided Costa Clear enclosure—new 2012
- Locking bridge access way
- High back helm & companion seats
- Bench seating forward of helm, and port side of helm, with storage under
- Halogen cockpit lighting
- Remote spotlight
- Man engine instrumentation at helm
- Optional single lever pod helm
- Optional power Hydraulic steering
- Stainless wheel
- Abundant storage on bridge
- Fresh water wash-down
- Aluminum rocket launcher (6) aft
- Optional hard top hatch

Deck Equipment

- 1000 LBS tender davit, 120 volt AC
- Tender chocks
- 13' Novurania tender with 40hp Honda with cover
- Bow pulpit
- Anchor windless with foot control on deck and remote on bridge
- Cushions for the bow seat

Cockpit area

- Fiberglass swim platform
- Stainless boarding ladder
- Transom door for easy access
- Teak cockpit sole
- (4) Lee rod holders in gunnels
- (2) Huge storage/fish boxes in cockpit
- Dockside water inlet w/regulator
- Cablemaster shore power retract
- Freshwater wash-down
- Saltwater wash-down
- Stereo sound speakers
- Courtesy lighting
- Underwater lights
- Access to rudders/transom
- Access to engine room
- Cockpit freezer/ refrigerator to starboard
- Access to bridge to port
- Rigging station/sink/lockers/drawers to port
- Corian folding cockpit tabl
- Aft and side hawser pipes

Electronics

- Ritchie power damp compass
- Furuno NavNet 12 kw, 72 mile radar with 12 " screen
- Furuno 14" touch chart/radar/sounder screen, new 2012
- Simrad Ap 20 Auto pilot
- Furuno RD-30 GPS
- Icom M604 VHF Radio, New 2014
- Glendenning engine synchronizers
- RCL-100 Point Pad remote spotlight
- Clarion Stereo/CD on bridge
- Bose stereo sound system

- JVC CD/DVD player auto changer
- JVC Sirius satellite radio
- JVC RX 7020 Audio/Video controller
- KVH Trac Vision 4 Sat TV antennae
- 3 Separate Sat TV receivers one for each TV
- 3 TV's
- Mitsubishi Turbo drive VHS player
- Intercom phone bridge to salon
- Cockpit stereo speakers

Electrical System

- 50 amp power cord, with Glendenning power reel
- Onan genset with sound box, 1240 hours
- (2) Sets of start batteries
- (1) Set of house batteries
- (1) Genset battery
- Underwater lights
- Refrigerator/Freezer in cockpit 120 AC
- Refrigerated step box 120AC
- Xantrex Sinewave inverter with remote 3-zone air conditioning with reverse heat

Water System

- 20-Gallon stainless hot water heater
- Optional 12 volt fresh water pump
- 120 Volt fresh water pump
- Dock side water connection
- Cockpit salt water wash down
- Cockpit fresh water wash down
- Flybridge fresh water wash down
- Fresh water tank gauge

Engine Room

- Entire engine room is awlgriped
- Fuel transfer pump,
- Optional fuel valves.
- Access to AC compressors
- Reverse auto oil change
- Racor fuel separators for main engines and gen set

- Crash pump
- Dripless shaft logs
- 2.5" stainless shafts
- Man D2840 LE407 engines 600 hrs
- ZF transmissions ZF350
- Sea Fire Halon system
- Xantrex Sinewave inverter, with remote in Salon
- Westerbeke 15KW genset with hush box
- 1240 hrs on genset
- Glenndinining CableMaster
- Oil changing pump for main engines and gen set

Remarks

This is one of the nicer Post's around. The interior has been kept in very good condition. This 50' Post is one of the best laid out convertibles on the market. Tavia is set up for cruising, but has the needs other than outriggers and a chair for fishing.

This is a low hour Post with up graded 860 Mans. You can cruise this boat at 30 knots and be burning well under 90 gallons per hours. The fuel and water tankage makes for long cruising without having to get on the fuel dock all the time.

I am a 50' Post owner. I have owned my Post since new in 2000 and and my family loved our Post. I know the Post's 50's inside and out and if you are in the market for a convertible in this size range please give me a call to talk about the possibility of you being the next owner of this nice Post.

Исключения

При продаже яхты исключаются личные вещи владельца.

Отказ от ответственности

Компания предоставляет описание судна или яхты добросовестно, но не может гарантировать точность этой информации, а также не ручается за техническое состояние. Покупатель должен проинструктировать своих агентов или оценщиков исследовать представленную информацию более подробно, по собственному желанию. Продажа судна или яхты, изменение цены или снятие с продажи будет происходить без предварительного уведомления.

ФОТОГРАФИИ

Starboard



Aft



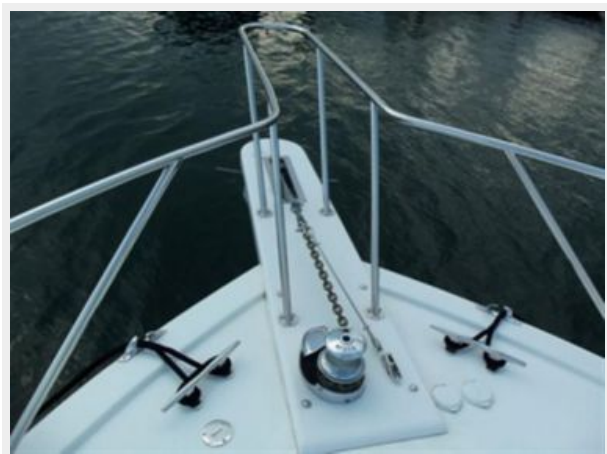
Portside



Tender



Windlass



Hardtop



Looking forward



Bridge access



Forward



Helm



Bridge



Helm seats



Cockpit storage



Cockpit



Teak Cockpit



Tackle center



Engine room access



Cockpit refrigerator / freezer



Inverter remote



Companionway



Galley



Galley refrigerator



Settee, starboard



Salon, forward



Salon, aft



Master stateroom



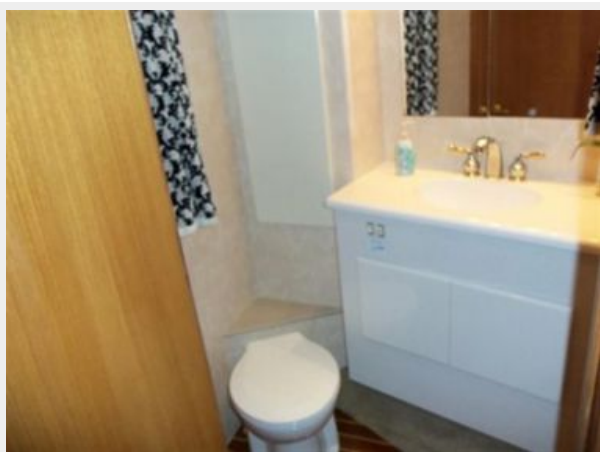
Master stateroom



Master hanging lockers



Head, port



Shower, port



Stateroom, port



Stateroom, port, hanging locker



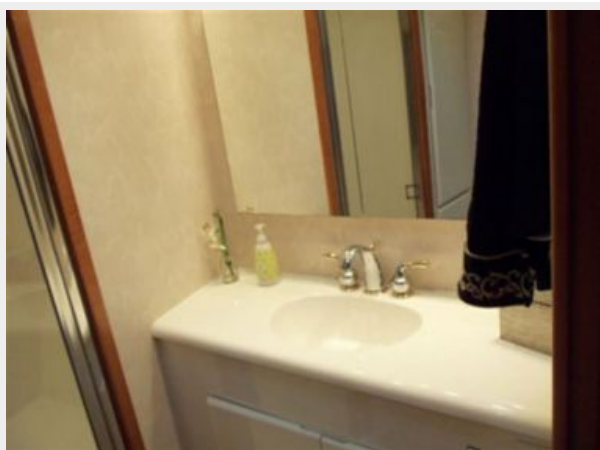
Stateroom, foward, upper berth



Stateroom, forward



Master head vanity



Laundry bin



Master head



Dryer



Crash pump



Electrical panel



Engine hour meter



Engine room



Engine room



Engine room



Engine room



Engine room



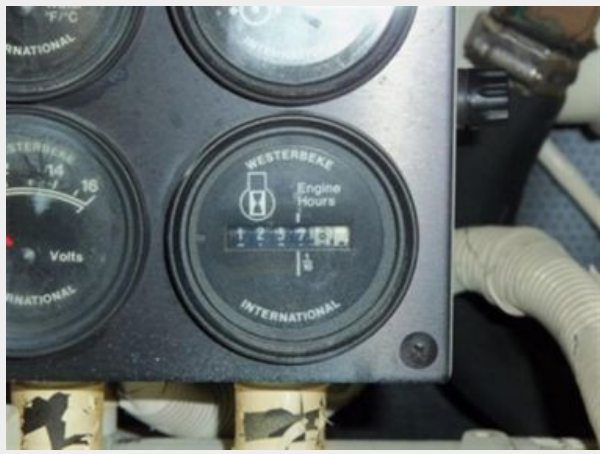
Engine room



Fuel valves



Gen set hours



Gen set



Gen set



Thru hulls



Utility room



КОНТАКТЫ

Андрей Шестаков (Andrey Shestakov) – ведущий яхтенный брокер отдела продаж яхт и судов компании Shestakov Yacht Sales Inc. Официальный представитель Shestakov Yacht Sales Inc. для русскоговорящих клиентов в центральном офисе компании в Майами/Форт Лодердейл/Флорида/США.

Контактная информация

Email: andrey@shestakovyachtsales.com

Web: shestakovyachtsales.com

Телефоны

Краснодарский край: **+7(918)465-66-44**

США, Майами, Флорида: **+1(954)274-4435**

Время работы

Понедельник – Суббота: **9:00 - 21:00**
EDT

Воскресенье: **Закрето**

Адрес



Harbour Towne Marina, 850 NE 3rd St,
STE 213, Dania, FL 33004