

## SEA WISH — HATTERAS



**Builder:** HATTERAS

**Year Built:** 2001

**Model:** Sport Fisherman

**Price:** PRICE ON APPLICATION

**Location:** United States

**LOA:** 65' 0" (19.81m)

**Cruise Speed:** 32 Kts. (37 MPH)

**Max Speed:** 36 Kts. (41 MPH)

Our experienced yacht broker, Andrey Shestakov, will help you choose and buy a yacht that best suits your needs **Sea Wish — HATTERAS** from our catalogue. Presently, at Shestakov Yacht Sales Inc., we have a wide variety of yachts available on our sale's list. We also work in close contact with all the big yacht manufacturers from all over the world.

If you would like to buy a yacht **Sea Wish — HATTERAS** or would like help answering any questions concerning purchasing, selling or chartering a yacht, please call **+1(954)274-4435**

---

# TABLE OF CONTENTS

---

TABLE OF CONTENTS	2
SPECIFICATIONS	4
Overview	4
Basic Information	4
Dimensions	4
Speed, Capacities and Weight	4
Accommodations	4
Hull and Deck Information	5
Engine Information	5
DETAILED INFORMATION	6
General	6
Vessel Layout	6
Salon	6
Galley	6
Dinette	6
Master Stateroom	6
VIP/Guest Stateroom	6
Guest Stateroom	7
Guest/Crew Stateroom	7
Flybridge	7
Engine Room	7
Exclusions	8
Disclaimer	8
PHOTOS	9
CONTACTS	13
Contact details	13
Telephones	13
Office hours	13

---

Address

13

---

# SPECIFICATIONS

---

## Overview

---

Nicest 65 On The Market.

Superb Hatteras 65 Convertible powered by the MTU 16V2000 1800 HP engines. PipeWelders full tower with complete electronics. No expense has been spared in the equipping and maintenance of this yacht. This is the best maintained 65 on the market. Fresh bottom paint.

## Basic Information

---

**Category:** Sport Fisherman

**Sub Category:** Convertible

**Model Year:** 2001

**Year Built:** 2001

**Country:** United States

## Dimensions

---

**LOA:** 65' 0" (19.81m)

## Speed, Capacities and Weight

---

**Cruise Speed:** 32 Kts. (37 MPH)

**Cruise Speed RPM:** 2100 Kts.

**Max Speed:** 36 Kts. (41 MPH)

**Max Speed RPM:** 2360 Kts.

**Water Capacity:** 445 Gallons

**Holding Tank:** 180 Gallons

**Fuel Capacity:** 1800 Gallons

## Accommodations

---

**Total Cabins:** 4

**Total Berths:** 6

**Total Heads:** 3

---

## Hull and Deck Information

---

**Hull Material:** Fiberglass

## Engine Information

---

**Manufacturer:** DDC/MTU

**Model:** 16V 2000

**Engine Type:** Inboard

**Fuel Type:** Diesel

---

# DETAILED INFORMATION

---

## General

---

Superb Hatteras 65 Convertible powered by the MTU 16V2000 1800 HP engines. PipeWelders full tower with complete electronics. No expense has been spared in the equipping and maintenance of this yacht. This is the best maintained 65 on the market. All applicable MTU maintenance schedules done.

## Vessel Layout

---

Salon with galley and dinette forward. Four staterooms and three heads including crew.

## Salon

---

Salon is appointed with high gloss cherry wood interior, designer soft goods, L-shaped leather sofa with storage underneath, custom cocktail table and wood blinds.

## Galley

---

Galley features granite countertops and back splash, stainless steel sink, sub-zero drawer style refrigerator and freezer (4 drawers total) and ceramic cook top 4 burner, convection-microwave oven, Scotsman icemaker. teak & holly flooring.

## Dinette

---

Lovely raised dinette with polished granite top and leather upholstered plush U shaped seating.

## Master Stateroom

---

Master Stateroom features queen berth with storage underneath, two cedar lined lockers television and stereo and mirrored sidewall. Ensuite bath features full tub and gold fixtures

## VIP/Guest Stateroom

---

VIP/Quest Stateroom Forward features centerline queen berth with cedar lined storage underneath, two cedar lined lockers, cabinet above and outboard, overhead hatch, television and stereo. Ensuite bath with shower.

---

## Guest Stateroom

---

Guest Stateroom features upper and lower berths hanging locker, ensuite bath with shower.

---

## Guest/Crew Stateroom

---

Guest/Crews Quarters features twin berths with cabinets outboard, cedar lined hanging locker, ensuite bath with shower.

---

## Flybridge

---

Flybridge has open bridge layout. Electronic pop-up console, helm end companion chair, refrigerated box. L-shaped seating with rod storage under is forward. Custom Pipewelders tower with fiberglass hard top was installed in 2005.

- Cell phones (2)
- Sea 235 SSB radio
- Sattelite phone system
- Sea 157 VHF radio
- ICOM VHF
- Furuno 202 dual transducer sounder
- Datamarine digital depth sounder
- B&G tri-data log, speed and depth
- Northstar 952X GPS OPS
- Norttstar 961X GPS OPS
- Robertson AP20 autopilot
- Furuno radar
- Sea hailer

---

## Engine Room

---

The engine room is absolutely spectacular. This is one of the best maintained engine rooms you will see. It is maintained by a full time crew of two.

- AC~DC freshwater system 4" stainless shafts
- 30 gallon water beate
- 7 blade props 48 x 88
- 4 auto biilge pumps
- Oil change system
- Auto sump pumps
- Fuel transfer pumps
- 2 @ 21.5 Onan Gens w/sound shields

- Eskimo ice machine
- CruiseAir air conditioning units total 65,000 BTUs
- Dual racer filters
- Freshwater vacu-flush heads
- Fuel shut off valves
- ZF gears 4.133:1 ratio
- Manual engine guoge package
- Engine synchronizers
- Air compressor
- Water maker 800 GPD

## Exclusions

---

Owner's personal belongings.

## Disclaimer

---

The Company offers the details of this vessel or yacht in good faith but cannot guarantee or warrant the accuracy of this information nor warrant the condition of the vessel. A buyer should instruct his representatives, agents, or his surveyors, to investigate such details as the buyer desires validated. This vessel or yacht is offered subject to prior sale, price change, or withdrawal without notice.



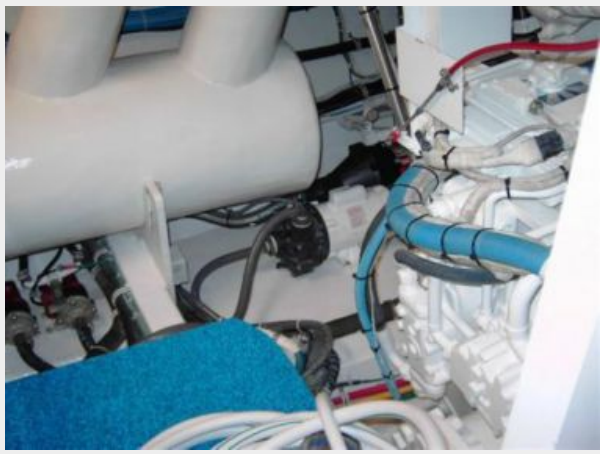
# PHOTOS











# CONTACTS

---

Andrey Shestakov, leading yacht broker of the sales department of Shestakov Yacht Sales Inc. Shestakov Yacht Sales Inc., the official representative of the Miami/Fort Lauderdale FL headquarters.

## Contact details

---

Email: [andrey@shestakovyachtsales.com](mailto:andrey@shestakovyachtsales.com)

Web: [shestakovyachtsales.com/en/](http://shestakovyachtsales.com/en/)

## Telephones

---

USA: +1(954)274-4435

## Office hours

---

Monday – Saturday: **9:00 - 21:00** EDT

Sunday: **closed**

## Address

---



Harbour Towne Marina, 850 NE 3rd St,  
STE 213, Dania, FL 33004