

BRU-HA — SEA RAY



Builder: SEA RAY

Year Built: 2006

Model: Cruiser

Price: PRICE ON APPLICATION

Location: United States

LOA: 48' 0" (14.63m)

Beam: 14' 8" (4.47m)

Min Draft: 4' 0" (1.22m)

Our experienced yacht broker, Andrey Shestakov, will help you choose and buy a yacht that best suits your needs **BRU-HA — SEA RAY** from our catalogue. Presently, at Shestakov Yacht Sales Inc., we have a wide variety of yachts available on our sale's list. We also work in close contact with all the big yacht manufacturers from all over the world.

If you would like to buy a yacht **BRU-HA — SEA RAY** or would like help answering any questions concerning purchasing, selling or chartering a yacht, please call **+1(954)274-4435**

TABLE OF CONTENTS

TABLE OF CONTENTS	2
SPECIFICATIONS	6
Overview	6
Basic Information	6
Dimensions	6
Speed, Capacities and Weight	6
Accommodations	7
Hull and Deck Information	7
Engine Information	7
DETAILED INFORMATION	8
Salon	8
Galley	8
Master Stateroom	8
Master Head	9
Aft Mid Stateroom	9
Aft Mid Stateroom Head	10
Helm	10
Electronics	10
Electrical System	11
Mechanical Equipment	11
Engine Room	11
Cockpit	12
Decks	12
Hull	13
Broker's Remarks	13
Exclusions	13
Disclaimer	13
PHOTOS	14

Galley	14
Galley Refrigerator	14
Galley	14
Galley Microwave	14
Galley Stove Top	14
Dinette	14
Port Light	15
Salon	15
Salon	15
Remote Plotter	15
Remote Plotter	15
Entertainment Center	15
Salon	16
Master Stateroom Drawers	16
Master Stateroom	16
Master Stateroom TV	16
Master Head	16
Master Head	16
Master Head	17
Master Shower Stall	17
Aft Mid Stateroom	17
Aft Mid Stateroom Port Lights	17
Aft Mid Stateroom TV	17
Aft Mid Stateroom Washer/Dryer Combo	17
Aft Mid Stateroom Head	18
Aft Mid Stateroom Vanity	18
Aft Mid Stateroom Head	18
Cockpit Seating	18
Cockpit Seating	19

Helm	19
Dual Helm Seats	19
Helm	19
Bow Thruster	19
Smartcraft	19
Cockpit	20
Cockpit Seating	20
Cockpit Seating	20
Cockpit Refrigerator	20
Wet Bar	20
Cockpit TV	20
Cockpit	21
Bow	21
Spotlight	21
Windlass & Anchor	21
Bow	21
Skylight	21
Skylight/Electronic Windshield Vents	22
Radar Arch	22
Satellite Antenna	22
Air Horn	22
Walk-Around	22
Swim Platform	22
Engine Room Equipment	23
Engine Room Equipment	23
Oil System	23
Raycor Fuel Filters	23
Generator w/ Sound Shield	23
Strainers and Bilge Heater	23

Port Profile	24
Forward Profile	24
STBD Profile	24
Stern Profile	24
CONTACTS	25
Contact details	25
Telephones	25
Office hours	25
Address	25

SPECIFICATIONS

Overview

Exceptional one owner FRESH WATER Vessel that shows pride of ownership. Delivered from factory to Knoxville, TN - never salt water used. This stunning express offers a large Entertainment area with a rotating helm seat and ample cockpit seating for family and friends. The distinctively Shaped side windows and the sweeping lines took American sport yachting to a new level. The salon features a Open concept interior with a large TV and sound system. The galley is large and offers ample storage and a U-Shaped counter. Forward is a Master Stateroom with en suite head and separate shower and Aft is a Mid Stateroom with en suite head.

Basic Information

Category: Cruiser

Sub Category: Express

Model Year: 2006

Year Built: 2006

Country: United States

Vessel Top: 2363

Dimensions

LOA: 48' 0" (14.63m)

Beam: 14' 8" (4.47m)

Min Draft: 4' 0" (1.22m)

Speed, Capacities and Weight

Cruise Speed RPM: 28 Kts.

Displacement: 33600 Pounds

Water Capacity: 110 Gallons

Holding Tank: 60 Gallons

Fuel Capacity: 400 Gallons

Accommodations

Total Cabins: 2

Total Berths: 2

Sleeps: 6

Total Heads: 2

Hull and Deck Information

Hull Material: Fiberglass

Deck Material: Fiberglass Sandwich

Hull Configuration: Modified Deep Vee

Hull Color: White

Hull Finish: Plastic

Engine Information

Engines: 2

Manufacturer: Cummins

Model: QSC 8.3

Engine Type: Inboard

Fuel Type: Diesel

DETAILED INFORMATION

Salon

- Full Carpet in Wheaton Color
- Lasso Upholstery
- Upgraded Bose Life Style Stereo System w/ Surround Sound
- Cherry Wood Finish
- Large TV w/Sat TV Receiver and DVD
- Indirect Lighting
- Central Vacuum System
- Ottoman
- Sliding Cabin Entry Door
- Throw Pillows
- Movable Cherry Wood High Low Table
- Lounge Converts to Berth
- Remote Plotter in Salon
- Window Blinds
- Stainless Steel Hand Railing

Galley

- U-Shaped Solid Surface Counter
- Microwave/Convection Oven
- Stainless Steel Sink w/Spray Handle
- Two Burner Electric Stove
- Refrigerator/Freezer
- Sea Rail for Cook Top
- Stove Lighting
- 110V Outlet
- Upper Cabin Storage
- Utility Storage Drawers w/ Cutlery Insert
- Cherry Wood Grain Cabinetry
- Below Counter Storage Cabinets
- Exhaust Fan
- Wood Flooring

Master Stateroom

- Full Sized Double Berth
- Bed Cover and Pillows Package

- Hang Up Lockers w/ Lights and Cedar Lining
- Book Shelve Storage
- Flat Screen TV w/DVD Player
- 110V Outlet
- Overhead Hatch with Sun Shade and Screen
- Privacy Door and Blinds
- Overhead 12V Lighting
- Full Length Mirror
- Reading Lights
- Air-Conditioning and Head Control
- Storage Drawers under Berth
- Port Lights - Port and Starboard
- Salon Privacy Door

Master Head

- Vanity Solid Surface Counter Top
- Medicine Cabinet w/ Mirror
- Separate Shower Stall w/Shower Sump Pump
- VacuFlush Head w/ Holding Tank and Macerator
- Opening Stainless Steel Port Light
- Indirect Lighting
- Lower Cabinet Storage
- 110V Outlet
- Exhaust Fan
- Cherry Wood Privacy Door
- Stainless Steel Sink w/ Grohe Faucet
- Large Makeup Mirror with Frame
- Robe Hook and Towel Ring

Aft Mid Stateroom

- Twin Berths
- Reading Lights
- Storage Cabinets
- Hanging Locker
- Bedspreads and Pillow Package
- Opening Port Light w/Privacy Blinds
- Washer/Dryer Compartment
- Flat Screen TV w/DVD
- Independent AC/Heat Control
- En Suite Split Head

- Under Bunk Storage
- Cherry Wood Privacy Door
- Stainless Steel Sink w/ Grohe Faucet
- Overhead Lighting

Aft Mid Stateroom Head

- Aft En Suite Head w/ Shower and Privacy Door
- Shower Curtain
- VacuFlush Head
- Towel Holder
- Stainless Steel Hand Rail
- Robe Hook
- Medicine Cabinet w/Mirror
- Solid surface Counter Top
- Vanity Storage

Helm

- Sea Ray Wood Grain Tilt Helm Wheel
- Electric Windshield Vents Port and Starboard
- Helm AC Vents
- Dual Helm Bolster Seats w/Arm Rest
- Electronic Shift/Controls
- Smartcraft Diagnostic Information Panel
- Drink Holders
- Hard Top w/Hatches
- Companion Lounge Seating
- Remote Stereo Control
- Windshield Wipers
- Engine Sync Switch, Cruise Control, Slow Idle
- Instrument Panel Cover
- Helm Cover
- Bow Thruster

Electronics

- Sea Ray Nav III Chart Plotter Multi Function Display
- Maptec Open Array Radar w/ Raymarine MDS-2 Overlay
- Raymarine ST7001+ Autopilot System
- Upgraded Garmin Plotter w/Multi Function Display

- Clarion Stereo System w/ a 6-Disc Changer
- Satellite TV DSS System w/ (4) SAT receivers
- Remote Halogen Spotlight w/Dual Bulbs
- Remote Stereo Control
- Wet Compass
- Premium Audio System Upgrade
- Sirius Sat Radio

Electrical System

- Sea Ray Custom Electrical Distribution Panel 60 Cycle, 120V Onan Generator w/ Sound Shield
- Glendinning 50 Amp Electrical Shore Power System
- Dockside Cable TV Hook Up
- Battery Charger
- Battery Switches
- Battery Parallel System
- Electrical Bonding System
- Pressure Water System
- Remote Spot Light
- Central Vac System
- Alarm System
- Color Coded Wiring w/ Café Protection
- 11 Gal. Hot Water Heater
- Transformer Power Isolator
- 8D Batteries w/ Boxes

Mechanical Equipment

- Trim Tab System
- Sea Star Steering Assist System
- Bow Thruster
- Waste Macerator System w/ Pump Out
- Air Horn System
- Power Assist Steering System
- Washer/Dryer Combo Unit
- All Chain Windlass Anchor System w/ Forward Foot Switches
- Oil Change System

Engine Room

- Engine Room Lighting
- Engine Room Sound Insulation
- Bronze Sea Strainers w/ Air Conditioning Strainer
- Racor Fuel Filters
- USCG Type-1 Fuel Lines w/ Fuel Shut Off System
- Generator w/ Sound Shield
- Automatic Fire Suppression System
- Oil Change System
- Dripless Shaft Seals
- Spare Prop Holder w/ New Set of Props in Boxes
- Bilge Pumps
- Engine Room Blower System
- Engine Room Heater
- Sea Ray DC CB Panel
- High Water Alarm

Cockpit

- Cockpit AC
- Cockpit Carpeting
- U-Shaped Seating w/ Storage
- Removable Cockpit Table w/ Teak Insert
- Filler Cushion for Cockpit Table
- Wet Bar w/ Stainless Steel Sink
- Cockpit Refrigerator
- Cockpit Shower
- Cockpit TV
- Upgraded Cockpit Stereo
- Transom Stereo Speakers
- Rod Holder
- Transom Door
- Molded Boarding Steps
- Stainless Steel Hand Rails
- Courtesy Lighting
- Engine Room Access

Decks

- Non Skid Surface
- 316L Stainless Steel Bow Railing
- Forward Anchor Storage Locker
- Hand Rails

- Skylight
- Forward Opening Hatch
- Forward Anchor Foot Switches
- Forward Bow Cushion

Hull

- Hydraulic Swim Platform
- Dingy Chocks
- Rub Railing
- SS Bow Rail
- Bronze Seacocks
- Transom Shower
- Storage Trunk
- Underwater Exhaust
- Transom Speakers
- Radar Arch
- Trim Tabs
- Bronze Underwater Thru Hull Fittings

Broker's Remarks

This is a very clean and well maintained vessel owned by a knowledgeable yachtsman. Lightly cruised and ready for it's new owner.

Exclusions

Owner's personal belongings.

Disclaimer

The Company offers the details of this vessel or yacht in good faith but cannot guarantee or warrant the accuracy of this information nor warrant the condition of the vessel. A buyer should instruct his representatives, agents, or his surveyors, to investigate such details as the buyer desires validated. This vessel or yacht is offered subject to prior sale, price change, or withdrawal without notice.

PHOTOS

Galley



Galley Refrigerator



Galley



Galley Microwave



Galley Stove Top



Dinette



Port Light



Salon



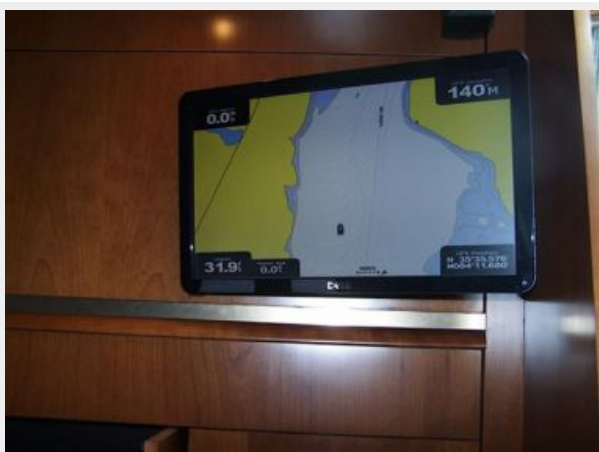
Salon



Remote Plotter



Remote Plotter



Entertainment Center



Salon



Master Stateroom Drawers



Master Stateroom



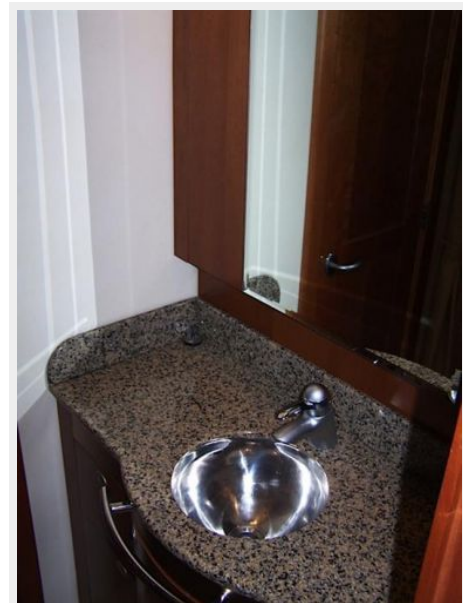
Master Stateroom TV



Master Head



Master Head



Master Head



Master Shower Stall



Aft Mid Stateroom



Aft Mid Stateroom Port Lights



Aft Mid Stateroom TV



Aft Mid Stateroom Washer/Dryer Combo



Aft Mid Stateroom Vanity



Aft Mid Stateroom Head



Aft Mid Stateroom Head



Cockpit Seating



Cockpit Seating



Helm



Dual Helm Seats



Helm



Bow Thruster



Smartcraft



Cockpit



Cockpit Seating



Cockpit Seating



Cockpit Refrigerator



Cockpit TV



Wet Bar



Cockpit



Bow



Spotlight



Windlass & Anchor



Bow



Skylight



Skylight/Electronic Windshield Vents



Radar Arch



Satellite Antenna



Air Horn



Walk-Around



Swim Platform



Engine Room Equipment



Engine Room Equipment



Oil System



Raycor Fuel Filters



Generator w/ Sound Shield



Strainers and Bilge Heater



Port Profile



Forward Profile



STBD Profile



Stern Profile



CONTACTS

Andrey Shestakov, leading yacht broker of the sales department of Shestakov Yacht Sales Inc. Shestakov Yacht Sales Inc., the official representative of the Miami/Fort Lauderdale FL headquarters.

Contact details

Email: andrey@shestakovyachtsales.com

Web: shestakovyachtsales.com/en/

Telephones

USA: +1(954)274-4435

Office hours

Monday – Saturday: **9:00 - 21:00** EDT

Sunday: **closed**

Address



Harbour Towne Marina, 850 NE 3rd St,
STE 213, Dania, FL 33004