

## HER CHOICE — CARVER



**Builder:** CARVER

**Year Built:** 1989

**Model:** Motor Yacht

**Price:** PRICE ON APPLICATION

**Location:** United States

**LOA:** 38' 0" (11.58m)

**Beam:** 14' 0" (4.27m)

**Min Draft:** 3' 4" (1.02m)

**Max Draft:** 3' 4" (1.02m)

**Cruise Speed:** 16 Kts. (18 MPH)

**Max Speed:** 22 Kts. (25 MPH)

Our experienced yacht broker, Andrey Shestakov, will help you choose and buy a yacht that best suits your needs **Her Choice — CARVER** from our catalogue. Presently, at Shestakov Yacht Sales Inc., we have a wide variety of yachts available on our sale's list. We also work in close contact with all the big yacht manufacturers from all over the world.

If you would like to buy a yacht **Her Choice — CARVER** or would like help answering any questions concerning purchasing, selling or chartering a yacht, please call **+1(954)274-4435**

# TABLE OF CONTENTS

|  |    |
|--|----|
| TABLE OF CONTENTS                      | 2  |
| SPECIFICATIONS                         | 5  |
| Overview                               | 5  |
| Basic Information                      | 5  |
| Dimensions                             | 5  |
| Speed, Capacities and Weight           | 5  |
| Accommodations                         | 6  |
| Hull and Deck Information              | 6  |
| Engine Information                     | 6  |
| DETAILED INFORMATION                   | 7  |
| 38' Carver Overview                    | 7  |
| 38' Carver Vessel Walkthrough          | 7  |
| 38' Carver Accommodations              | 7  |
| 38' Carver Salon                       | 7  |
| 38' Carver Galley                      | 7  |
| 38' Carver Dining                      | 8  |
| 38' Carver Master Stateroom            | 8  |
| 38' Carver Guest Stateroom             | 8  |
| 38' Carver Flybridge                   | 8  |
| 38' Carver Sundeck                     | 8  |
| 38' Carver Audio/Visual Equipment      | 8  |
| 38' Carver Electronics                 | 8  |
| 38' Carver Electrical Equipment        | 9  |
| 38' Carver Engine/Mechanical Equipment | 9  |
| 38' Carver Deck Equipment              | 9  |
| 38' Carver Safety & Fire Protection    | 10 |
| 38' Carver Exclusions                  | 10 |
| 38' Carver Disclaimer                  | 10 |

|                                       |    |
|---------------------------------------|----|
| Exclusions                            | 10 |
| Disclaimer                            | 10 |
| PHOTOS                                | 12 |
| 38' Carver port aft profile           | 12 |
| 38' Carver starboard aft profile      | 12 |
| 38' Carver anchor windlass            | 12 |
| 38' Carver aft profile                | 12 |
| 38' Carver foredeck                   | 13 |
| 38' Carver foredeck aft               | 13 |
| 38' Carver port side deck             | 13 |
| 38' Carver starboard side deck        | 13 |
| 38' Carver flybridge forward          | 13 |
| 38' Carver flybridge helm             | 13 |
| 38' Carver flybridge helmseat         | 14 |
| 38' Carver flybridge aft seating      | 14 |
| 38' Carver sundeck                    | 14 |
| 38' Carver sundeck port               | 14 |
| 38' Carver sundeck starboard          | 14 |
| 38' Carver salon forward              | 14 |
| 38' Carver salon aft                  | 15 |
| 38' Carver salon port                 | 15 |
| 38' Carver salon starboard            | 15 |
| 38' Carver salon starboard seating    | 15 |
| 38' Carver galley                     | 15 |
| 38' Carver dinette                    | 15 |
| 38' Carver master stateroom           | 16 |
| 38' Carver master stateroom port      | 16 |
| 38' Carver master stateroom starboard | 16 |
| 38' Carver master stateroom forward   | 16 |

|                                    |    |
|------------------------------------|----|
| 38' Carver master stateroom head   | 16 |
| 38' carver guest stateroom         | 16 |
| 38' Carver master stateroom shower | 17 |
| 38' Carver guest stateroom head    | 17 |
| 38' Carver engine room access      | 17 |
| 38' Carver port main engine        | 17 |
| 38' Carver starboard main engine   | 18 |
| 38' Carver electrical panel        | 18 |
| 38' Carver layout                  | 18 |
| CONTACTS                           | 19 |
| Contact details                    | 19 |
| Telephones                         | 19 |
| Office hours                       | 19 |
| Address                            | 19 |

# SPECIFICATIONS

## Overview

Her Choice is a classic Carver sundeck motoryacht in good condition. She offers a 2 stateroom, 2 head layout with numerous updates. She has been maintained by the same mechanic for the past 13 years and he is available to provide a maintenance history on the boat. Price reduced!

## Basic Information

|                        |                         |
|------------------------|-------------------------|
| Category: Motor Yacht  | Sub Category: Aft Cabin |
| Model Year: 1989       | Year Built: 1989        |
| Country: United States | Vessel Top: 2369        |
| Fly Bridge: Yes        |                         |

## Dimensions

|                           |                          |
|---------------------------|--------------------------|
| LOA: 38' 0" (11.58m)      | Beam: 14' 0" (4.27m)     |
| Min Draft: 3' 4" (1.02m)  | Max Draft: 3' 4" (1.02m) |
| Clearance: 15' 4" (4.67m) |                          |

## Speed, Capacities and Weight

|                                |                             |
|--------------------------------|-----------------------------|
| Cruise Speed: 16 Kts. (18 MPH) | Max Speed: 22 Kts. (25 MPH) |
| Displacement: 22750 Pounds     | Water Capacity: 91 Gallons  |
| Holding Tank: 75 Gallons       | Fuel Capacity: 280 Gallons  |

---

## Accommodations

---

**Total Cabins:** 2

**Total Berths:** 4

**Sleeps:** 8

**Total Heads:** 2

---

## Hull and Deck Information

---

**Hull Material:** Fiberglass

**Deck Material:** Fiberglass

**Hull Color:** White

**Hull Finish:** Aluminum

---

## Engine Information

---

**Engines:** 2

**Manufacturer:** Crusader

**Model:** 454

**Engine Type:** Inboard

**Fuel Type:** Gas/Petrol

---

# DETAILED INFORMATION

---

---

## 38' Carver Overview

---

Her Choice is a classic Carver sundeck motoryacht in good condition. She offers a 2 stateroom, 2 head layout with numerous updates. She has been maintained by the same mechanic for the past 13 years and he is available to provide a maintenance history on the boat. Price reduced!

---

## 38' Carver Vessel Walkthrough

---

Entering the salon from the sundeck, you will find built-in seating and a table to starboard, cabinetry to port and the master stateroom entrance port aft. Walk forward to find the galley to port and a dinette to starboard. The guest stateroom and head are forward. Engine room access is through salon sole hatches.

---

## 38' Carver Accommodations

---

Her Choice offers a full beam master stateroom aft with queen size berth and ensuite head and a guest stateroom forward with a double size berth and ensuite head. There is also a sleeper/sofa in the salon and the dinette converts into a berth.

---

## 38' Carver Salon

---

The salon offers an L-shaped sleeper/sofa (cushions re-covered in 2014) to starboard, lounge chair and cabinetry to port, liquor cabinet port forward, carpet, blinds (2013) and curtains (2013).

---

## 38' Carver Galley

---

The galley is down and port forward.

- Vitrifrigo refrigerator/freezer (2013)
- Princess 3-burner electric cooktop and oven
- GE microwave oven (2013)
- Double stainless steel sinks with new faucet in 2012
- Storage drawers and a shelf
- Teak parquet sole

---

## 38' Carver Dining

---

Dining space is available at the dinette to starboard across from the galley. The cushions were re-covered in 2014.

---

## 38' Carver Master Stateroom

---

The full beam master stateroom aft offers a queen size berth, windows on each side and aft, cedar-lined hanging locker, storage drawers, shelf, carpet, full-length mirrors, vanity/desk with stool and an ensuite head with enclosed shower and new faucet in 2012.

---

## 38' Carver Guest Stateroom

---

The guest stateroom forward offers a double size berth to starboard, 2 portlights, overhead hatch, shelf, storage cabinets, hanging locker and an ensuite head with enclosed shower and new faucet in 2012. There is also access to the head via a second door from the galley-dinette area.

---

## 38' Carver Flybridge

---

The flybridge offers a bimini top, Eisenglass enclosure, Radar arch, non-skid deck, storage forward, forward benchseat, helmseat and built-in benchseat starboard aft.

---

## 38' Carver Sundeck

---

The sundeck offers a hardtop, Eisenglass and screen enclosure, new carpet over non-skid deck, stainless steel ladder to the fiberglass swimplatform, same level access to each side deck and deck furniture.

---

## 38' Carver Audio/Visual Equipment

---

- Samsung flat screen TV in the salon
- Clarion M455 AM/FM/CD/Sirius sat ready radio in the salon
- Clarion stereo controller in the salon and on the flybridge
- 14" Vizio flat screen TV in the master stateroom

---

## 38' Carver Electronics

---

- Ritchie Powerdamp magnetic compass



- Standard Horizon Intrepid VHF
- Simrad AP16 autopilot
- Garmin Radar
- Garmin chart plotter with new East Coast chip in 2013

---

## **38' Carver Electrical Equipment**

---

- Kohler R23 7.5kW generator with 963 hours
- Professional Mariner battery charger
- Vector 1000 watt inverter
- Perko battery switches
- Battery monitor gauge
- 50 amp shore cord with splitter to twin 30 amp connectors

---

## **38' Carver Engine/Mechanical Equipment**

---

- Crusader 454 main engines with 1807 hours
- Perko sea strainers
- Seastar hydraulic steering system
- Marine Air Systems reverse cycle air conditioning/heating system (new forward guest stateroom air handler unit in 2014)
- The same mechanic has maintained Her Choice for the past 13 years

---

## **38' Carver Deck Equipment**

---

Simpson Lawrence Seawolf anchor windlass with a foot control

- Stainless steel rails
- Stainless steel deck hardware
- Non-skid decks

- Fiberglass swimplatform
- Stainless steel swim ladder
- Weaver swimplatform davit bases
- Bow pulpit
- Bomar deck hatch

---

## 38' Carver Safety & Fire Protection

---

Fireboy Halon 1301 engine room fire suppression system with remote control

- Fiamm horns
- Searchlight
- Life jackets
- First Alert carbon monoxide alarm
- Smoke detector
- Rule bilge pumps

---

## 38' Carver Exclusions

---

- Sellers' personal belongings

---

## 38' Carver Disclaimer

---

The Company offers the details of this vessel in good faith but cannot guarantee or warrant the accuracy of this information nor warrant the condition of the vessel. A buyer should instruct his agents, or his surveyors, to investigate such details as the buyer desires validated. This vessel is offered subject to prior sale, price change, or withdrawal without notice.

---

## Exclusions

---

Owner's personal belongings.

---

## Disclaimer

---

The Company offers the details of this vessel or yacht in good faith but cannot guarantee or warrant the accuracy of this information nor warrant the condition of the vessel. A buyer should instruct his representatives, agents, or his surveyors, to investigate such details as the buyer desires validated. This vessel or yacht is offered subject to prior sale, price change, or withdrawal without notice.

# PHOTOS

**38' Carver port aft profile**



**38' Carver starboard aft profile**



**38' Carver aft profile**



**38' Carver anchor windlass**



**38' Carver foredeck**



**38' Carver foredeck aft**



**38' Carver port side deck**



**38' Carver starboard side deck**



**38' Carver flybridge forward**



**38' Carver flybridge helm**





**38' Carver flybridge helmseat**



**38' Carver flybridge aft seating**



**38' Carver sundeck**



**38' Carver sundeck port**



**38' Carver sundeck starboard**



**38' Carver salon forward**



**38' Carver salon aft**



**38' Carver salon port**



**38' Carver salon starboard**



**38' Carver salon starboard seating**



**38' Carver dinette**



**38' Carver galley**





**38' Carver master stateroom**



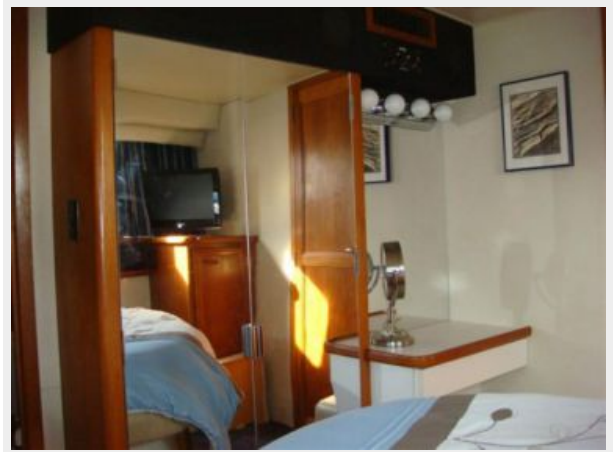
**38' Carver master stateroom port**



**38' Carver master stateroom starboard**



**38' Carver master stateroom forward**



**38' Carver master stateroom head**



**38' carver guest stateroom**





**38' Carver master stateroom shower**



**38' Carver guest stateroom head**



**38' Carver engine room access**



**38' Carver port main engine**



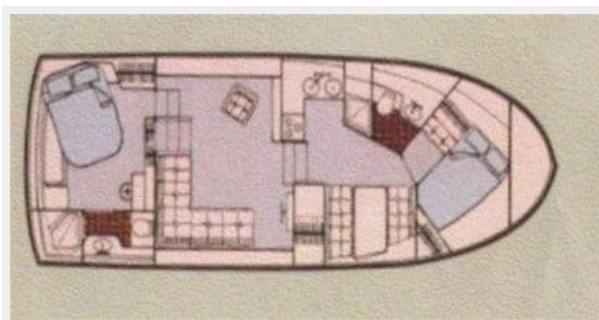
**38' Carver starboard main engine**



**38' Carver electrical panel**



**38' Carver layout**



# CONTACTS

---

Andrey Shestakov, leading yacht broker of the sales department of Shestakov Yacht Sales Inc. Shestakov Yacht Sales Inc., the official representative of the Miami/Fort Lauderdale FL headquarters.

## Contact details

---

Email: **andrey@shestakovyachtsales.com**

Web: [shestakovyachtsales.com/en/](http://shestakovyachtsales.com/en/)

## Telephones

---

USA: **+1(954)274-4435**

## Office hours

---

Monday – Saturday: **9:00 - 21:00 EDT**

Sunday: **closed**

## Address

---



Harbour Towne Marina, 850 NE 3rd St,  
STE 213, Dania, FL 33004