

## FRIENDS IN LOW PLACES — HATTERAS



**Builder:** HATTERAS

**Year Built:** 1998

**Model:** Motor Yacht

**Price:** PRICE ON APPLICATION

**Location:** United States

**LOA:** 52' 0" (15.85m)

**Beam:** 16' 0" (4.88m)

**Max Draft:** 5' 2" (1.57m)

Our experienced yacht broker, Andrey Shestakov, will help you choose and buy a yacht that best suits your needs **Friends In Low Places — HATTERAS** from our catalogue. Presently, at Shestakov Yacht Sales Inc., we have a wide variety of yachts available on our sale's list. We also work in close contact with all the big yacht manufacturers from all over the world.

If you would like to buy a yacht **Friends In Low Places — HATTERAS** or would like help answering any questions concerning purchasing, selling or chartering a yacht, please call **+1(954)274-4435**

# TABLE OF CONTENTS

TABLE OF CONTENTS	2
SPECIFICATIONS	5
Basic Information	5
Dimensions	5
Speed, Capacities and Weight	5
Accommodations	5
Hull and Deck Information	5
Engine Information	5
DETAILED INFORMATION	6
Description	6
Vessel Walkthrough	6
Salon	6
Galley	7
Master Stateroom	7
Master Head, Aft	7
VIP Stateroom, Forward	8
VIP Head, Forward	8
Guest Stateroom, Starboard, Aft	8
Guest/Day Head	8
Flybridge - Hardtop	9
Electronics & Navigational Equipment	9
Cockpit/Aft Deck/Flybridge	10
Electrical System	10
Deck & Misc. Equipment	11
Mechanical Equipment	11
Engine Compartment & Bilge	12
Key Features	12
Exclusions	13

Exclusions	13
Disclaimer	13
PHOTOS	14
Salon	14
Salon	14
Salon/Galley	14
Dinette	14
Companionway	14
Master Stateroom	14
Master Stateroom	15
Master Stateroom	15
Master Head	15
Master Head	15
VIP Stateroom	15
VIP Stateroom	15
Guest Stateroom	16
Electronics	16
Electronics	16
Helm	16
Helm	16
Helm	16
Helm	17
Helm	17
Helm/Electronics	17
Flybridge	17
Aft Deck	17
Aft Deck	17
Aft Deck	18
Aft Deck	18

---

Flybrige	18
Bow Pulpit	18
Bow	18
Engine Room	18
Engine Room	19
Engine Room	19
Friends in Low Places	19
Friends in Low Places	19
Friends in Low Places	20
Bow	20
Swim Platform	20
Stern	20
Friends In Low Places	20
<b>CONTACTS</b>	<b>21</b>
Contact details	21
Telephones	21
Office hours	21
Address	21

---

# SPECIFICATIONS

---

## Basic Information

---

**Category:** Motor Yacht

**Model Year:** 1998

**Year Built:** 1998

**Country:** United States

## Dimensions

---

**LOA:** 52' 0" (15.85m)

**Beam:** 16' 0" (4.88m)

**Max Draft:** 5' 2" (1.57m)

## Speed, Capacities and Weight

---

**Displacement:** 66000 Pounds

**Water Capacity:** 187 Gallons

**Holding Tank:** 100 Gallons

**Fuel Capacity:** 914 Gallons

## Accommodations

---

**Total Cabins:** 3

## Hull and Deck Information

---

**Hull Material:** Fiberglass

## Engine Information

---

**Engines:** 2

**Manufacturer:** Caterpillar

**Model:** 3406

**Engine Type:** Inboard

**Fuel Type:** Diesel

---

# DETAILED INFORMATION

---

## Description

---

During the 52 Hatteras MY,CPMY,and SportDeck Run 1990-1999 there were over 300 of these built, but only 9 were the Sportdeck with the euro transom and curved staircase. This is a key feature, of the 9, only 2 were built with the 3406 CATS. Only one of all of them had a teak raised panel interior woodwork. Along with the key features noted in this spec sheet , you will find one of the nicest, best equipped and layouts you could ask in a midsize motor yacht.

Don't miss this opportunity.

The "Friends in Low Places" 52 Hatteras Sportdeck is the epitome of any mid sized Hatteras Motoryacht. Three Staterooms and Three heads, large aft deck and flybridge are both Air Conditioned. She is loaded with options and recent improvements. Just to mention a few, But please see "KEY FEATURES" in this spec sheet. Preferred CAT Power, Teak interior , Frameless windows, Bow Thruster and much more. Maintained by her knowledgeable owner with an open checkbook policy. A must see for anyone wanting a nice MY easily managed by a couple.

## Vessel Walkthrough

---

The companionway leads to a forward cabin with centerline queen berth, mirrored forward bulkhead, private head and shower, hanging cedar closet, ample drawer storage and new TV/DVD.

Down and aft of the salon is a second guest cabin with over/under berths and storage below, storage on starboard side with private head and shower across the companionway to port.

The master stateroom is further aft with large queen berth, and an abundance of drawer and hanging locker storage, private full head with stall shower. The master stateroom is also equipped with Mitsubishi color TV and Sony stereo system.

## Salon

---

The spacious main salon is forward and down 3 steps from the aft deck. Teak high gloss woodwork compliments beige colors of carpeting and padded cornice boards. To port is a U-shaped lounge in beige with storage below. To starboard there are 2 swivel barrel chairs and ottoman that is also a chest with storage.

Upholstered lambrequins & valances, mini blinds, rope lighting under valances, decorative lamp, throw pillows, and framed artwork against aft bulkhead complete the salon furnishings. Other

features include an entertainment center with Yamaha stereo system and Samsung TV and LED Blu Ray on the starboard aft bulkhead. An electrical distribution panel is beneath, there is also storage behind the TV.

- Sony DSS satellite receiver
- AC and DC lighting system
- Yamaha AM/FM stereo receiver with CD player
- Samsung BluRay
- Surround Sound BOSE Cube speaker system
- Recessed lighting

---

## Galley

---

Forward and down from the salon, 2 built-in, hinged steps provide access to the engine compartment and full galley. To starboard is a dinette with storage beneath. The galley features white appliances, including a full size Whirlpool refrigerator/freezer, two-burner cooktop, Sharp microwave/convection oven, Toaster oven, Frigidaire dishwasher, Garbage disposal, and sink. Water level guage, AC/DC lighting, AC outlets, Engine room access through galley steps. Fountainhead countertops. Cherry/Holly Amtico flooring Forward of the galley and. down two steps is a Whirlpool washer/dryer located on the starboard side of the companionway. There is galley floor storage as well as wine storage for nine bottles.

---

## Master Stateroom

---

- Carpeting
- Ensuite head w/separate stall shower
- Angled queen berth with upholstered headboard and drawer storage
- Rope lights under bed and at top
- Cedar lined hanging lockers w/auto lighting
- Dresser with drawers
- 20" Sharp Flat screen TV
- AC/DC lighting system
- Pleated shades and valance boards
- Ventilating port light with screening
- Transom port light hatch and side portlight

---

## Master Head, Aft

---

- Stall shower with sliding door and seat
- Amtico Cherry/Holly flooring
- Cabinet storage
- Vacuflush head

- Solid surface Corian countertops
- Vent fan with recessed sink
- Lighting system
- Mirrored vanity cabinet
- Port light

---

## VIP Stateroom, Forward

---

- Centerline queen berth
- Lighting system with underneath storage - (4) drawers
- Stereo speakers with volume control
- Cedar lined hanging locker
- Anchor rode locker access
- Built-in dressers
- 20" LED TV/BluRay/DVD
- Below deck floor storage
- Overhead hatch with hatchmate cover/screen
- Ensuite head

---

## VIP Head, Forward

---

- Amtico Cherry/Holly flooring (2000)
- Solid surface countertops
- Recirculating vent fans
- Vacuflush head
- Separate stall shower

---

## Guest Stateroom, Starboard, Aft

---

- Upper & lower berths w/underneath storage
- Carpeting
- Cedar lined hanging locker
- Stereo speakers w/volume control
- Lighting system
- Reading lamps
- Speakers with volume control
- Portlight

---

## Guest/Day Head

---



- Amtico Cherry/Holly flooring (2000)
- Solid surface countertops
- Recirculating vent fans
- Vacuflush head
- Separate stall shower

---

## Flybridge - Hardtop

---

- 24,000 BTU air conditioning added in 2001
- Fuel level gauges
- Compass
- Full Eisenglass bridge enclosure
- (2) Recessed electronics boxes with plexi covers
- Sliding top hatch & door to aft deck with plexi covers
- L-shaped lounge & bench seating to port
- independent helm & companion seats w/cushions
- Flybridge carpeting
- Hydraulic steering
- Ships wheel
- Clutch & throttle controls

---

## Electronics & Navigational Equipment

---

- Furuno GPS/Plotter (upgraded)
- Robertson AP/25 autopilot
- Navnet
- Raytheon Tri-data
- Furuno 1932 48nm Radar
- Seatel Sat TV
- Satellite TT 3064A telephone
- (2) VHF radios SEA156 Remote mic, Standard Horizon AI5
- Compass
- RCL-100 remote spotlight
- Remote windlass control
- Fusion AM/FM/CD system for FB & aft deck iPod comp
- Bow thruster
- Venturi Windscreen
- (4) New speakers
- (2) Surveillance cameras - aft deck and salon - with remote internet viewing, motion detection, night-vision and a built-in network video recording system

## Cockpit/Aft Deck/Flybridge

---

Boarding the vessel from the sport deck and up 6 steps to the spacious aft deck with reverse cycle heat and air conditioning, wetbar, icemaker and refrigeration, New. The aft deck features an Eisenglass enclosure of stamoid canvass and Fibertex screening. Wing boards with sliding windows and wing doors to help regulate traffic flow. A wicker lounge and coffee table is aft, with loveseat to port and single chair with side table to starboard. Lounge, love seat and chair are cushioned with throw pillows, 42" LED Samsung TV, storage cabinets port & starboard, and stereo speakers with volume control. Proceed up 3 steps to the large. Air conditioned flybridge with L-shaped lounge to port and bench seating to starboard. Fitted with a custom Pipewelders Hardtop and Full enclosure with fibertex screening.

## Electrical System

---

- (2) 24 volt banks of heavy duty batteries
- 240 volt automatic battery
- 12 volt marine batteries charger,60Hz\
- Battery paralleling system w/switch at transformer connected shoreline inlets control console
- Watering system for batteries
- Air conditioning w/reverse-cycle
- (2) 240 volt, 50 amp, fused electrical
- AC and DC light fixtures inlets w/cords, one each port and stbd.
- AC duplex outlets
- Battery control panel w/fusing and DC distribution panel w/magnetic circuit isolation switches breakers and battery condition meter
- DC electronics panel w/magnetic circuit breaker
- AC distribution panel w/magnetic circuit breaker
- AC switching panel w/volt meter
- Systems monitor with visual and audible ammeter, generator start/stop controls signals for engine and gears, high bilge and interlock selector breakers water, fire warning in engine compartment, fire extinguisher discharge, and receptacles and lighting
- Ground fault protection on AC circuits AC power loss
- Navigation lights
- SSB radio ground screen laminated in Telephone/CATV inlet cabin top
- TV antenna, omni-directional
- Ships batteries
- 240v battery charger
- Battery parallel system
- Hatteras transformer system
- Port and Stbd 240v, 50 amp electrical inlets
- AC/DC lighting systems
- AC ships panel
- DC ships panel

- Hatteras systems monitor
- GFI circuits on AC receptacles and lighting system
- CAIV/phone Hookups
- 50 amp Glendinning cablemaster (starboard midship)
- 50 amp Glendinning cablemaster, transom
- (2) 30 amp shore power connection, port midship

---

## Deck & Misc. Equipment

---

- Maxwell VWC-2200 windlass
- Fiberglass pulpit w/ss anchor chute
- Danforth anchor w/150' chain
- Stainless steel rail package
- Custom molded hardtop
- Central Vacuum
- Dualair/Kalenburg air horns
- Coast Guard safety package
- Portable fire extinguishers
- Bronze rudders and struts
- 5-Blade Nlbral 36"x57 Props
- 2 1/2" stainless steel prop shaft
- Marquipt boarding ladder
- (4) Bow fender racks
- Marquipt Tide Ride stairs, mounted

---

## Mechanical Equipment

---

- Twin 3406E Caterpillar Freshwater cooled diesel engines
- The port engine was replace in1999 and actual time on is approx (750 Hrs)
- The starboard engine had a major overhaul in 2012 and has approx. 200 Hrs
- 20 KW Onan generator w/1500 hours in sound box
- Pressure water system w/20 gal hot water heater
- Fire suppression system
- Fresh water hose bib in engine room
- Dockside water connections w/pressure regulators
- Automatic bilge pumps
- Fuel water separators on main & genset
- Fuel priming pumps on mains
- Fuel tank selector manifold
- Oil changing system
- Kalenburg Air Horns
- Bow Thruster (New)
- Bottom Paint (Recent) FEB

---

## Engine Compartment & Bilge

---

- DC lights
- Twin diesel, freshwater-cooled main engines with marine gears, neutral interlocks, hour meters, alternators,
- DC bilge blowers
- 20kW freshwater-cooled diesel generator with seawater strainer, remote start, hour meter, water lift, fuel filters, seawater strainers and muffler and sound enclosure exhaust silencers
- Fixed fire extinguishing system for engine compartment with automatic and remote manual controls, plus audible and visual discharge signals
- Pressurized freshwater system with 20-gallon electric water heater
- Fresh water fill hose for engines and visual discharge signals generator
- Automatic, electric bilge pumps
- Dockside water connection
- Ball valves on all underwater through pressure reducing valve hull fittings with electric bonding
- U.L. approved fiberglass fuel tanks throughout
- Sewage holding tank plumbed
- Fuel filter/water separator, generator dockside discharge, with level indicator
- Duplex fuel filters/water separators with light in head bypass manifold, engines
- Fuel priming pumps, engines
- Fuel tank selector manifold with gauges at instrument panel

---

## Key Features

---

- Three Staterooms & Three Heads all have stall showers
- 3406Caterpillar Power 800HP, Low hours
- Sport Deck w/ euro transom and curved staircase w/handrail
- Bose Surround Sound
- Frameless windows
- Bow thruster
- Kalenberg Air horns
- Teak raised panel interior
- Isinglass with screens and covers
- Pipe welder's custom hardtop
- Recent bottom job
- Flybridge and Aft deck air-conditioning
- Spacious aft deck with platform for easy line handling
- Cameras for easy docking
- Easily managed by a couple
- Meticulously maintained by a knowledgeable owner

---

## Exclusions

---

Owner's personal belongings

---

## Exclusions

---

Owner's personal belongings.

---

## Disclaimer

---

The Company offers the details of this vessel or yacht in good faith but cannot guarantee or warrant the accuracy of this information nor warrant the condition of the vessel. A buyer should instruct his representatives, agents, or his surveyors, to investigate such details as the buyer desires validated. This vessel or yacht is offered subject to prior sale, price change, or withdrawal without notice.

# PHOTOS

Salon



Salon



Salon/Galley



Dinette



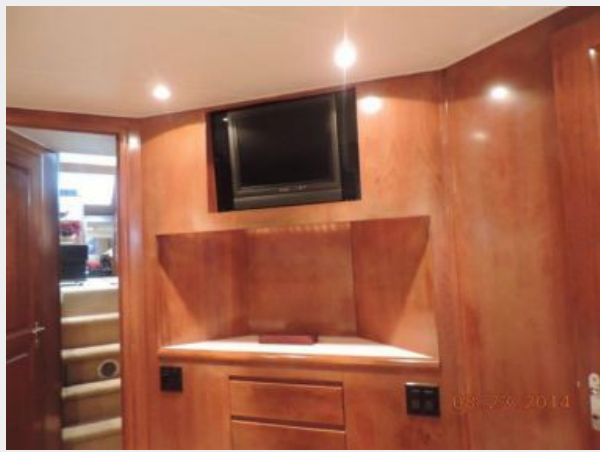
Companionway



Master Stateroom



**Master Stateroom**



**Master Stateroom**



**Master Head**



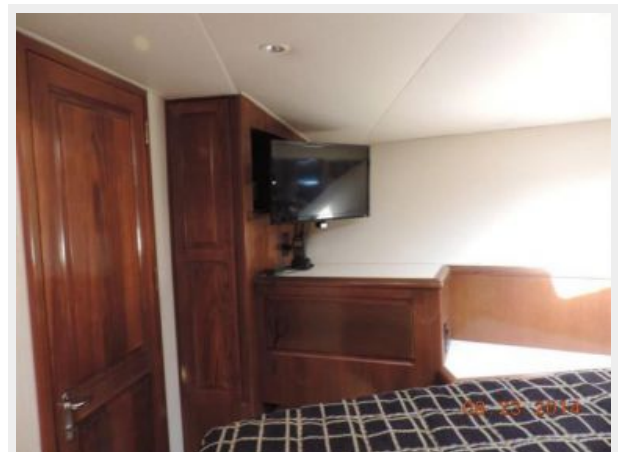
**Master Head**



**VIP Stateroom**



**VIP Stateroom**



**Guest Stateroom**



**Electronics**



**Electronics**



**Helm**



**Helm**



**Helm**





**Helm**



**Helm**



**Helm/Electronics**



**Flybridge**



**Aft Deck**



**Aft Deck**



**Aft Deck**



**Aft Deck**



**Flybrige**



**Bow Pulpit**



**Bow**



**Engine Room**



**Engine Room**



**Engine Room**



**Friends in Low Places**



**Friends in Low Places**



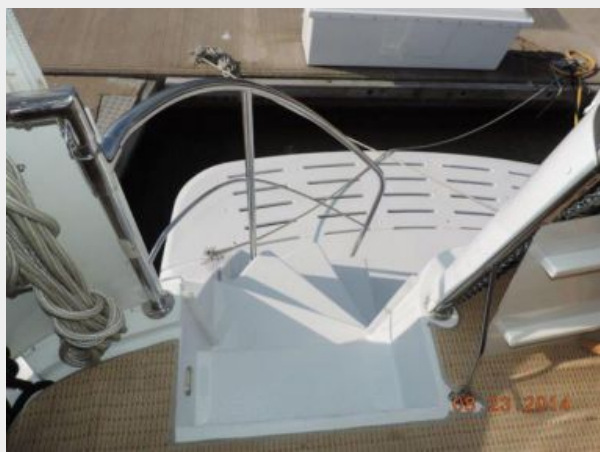
### Friends in Low Places



### Bow



### Swim Platform



### Stern



### Friends In Low Places



---

# CONTACTS

---

Andrey Shestakov, leading yacht broker of the sales department of Shestakov Yacht Sales Inc. Shestakov Yacht Sales Inc., the official representative of the Miami/Fort Lauderdale FL headquarters.

---

## Contact details

---

Email: [andrey@shestakovyachtsales.com](mailto:andrey@shestakovyachtsales.com)

Web: [shestakovyachtsales.com/en/](http://shestakovyachtsales.com/en/)

---

## Telephones

---

USA: +1(954)274-4435

---

## Office hours

---

Monday – Saturday: **9:00 - 21:00** EDT

Sunday: **closed**

---

## Address

---



Harbour Towne Marina, 850 NE 3rd St,  
STE 213, Dania, FL 33004