

OCEAN DANCE — CHEOY LEE



Builder: CHEOY LEE

Year Built: 1982

Model: Trawler

Price: PRICE ON APPLICATION

Location: United States

LOA: 55' 0" (16.76m)

Beam: 16' 5" (5.00m)

Min Draft: 5' 6" (1.68m)

Max Draft: 5' 6" (1.68m)

Cruise Speed: 8 Kts. (9 MPH)

Max Speed: 11 Kts. (13 MPH)

Our experienced yacht broker, Andrey Shestakov, will help you choose and buy a yacht that best suits your needs **Ocean Dance — CHEOY LEE** from our catalogue. Presently, at Shestakov Yacht Sales Inc., we have a wide variety of yachts available on our sale's list. We also work in close contact with all the big yacht manufacturers from all over the world.

If you would like to buy a yacht **Ocean Dance — CHEOY LEE** or would like help answering any questions concerning purchasing, selling or chartering a yacht, please call **+1(954)274-4435**

TABLE OF CONTENTS

TABLE OF CONTENTS	2
SPECIFICATIONS	6
Overview	6
Basic Information	6
Dimensions	6
Speed, Capacities and Weight	6
Accommodations	7
Hull and Deck Information	7
Engine Information	7
DETAILED INFORMATION	8
55' Cheoy Lee Overview	8
55' Cheoy Lee Vessel Walkthrough	8
55' Cheoy Lee Accommodations	8
55' Cheoy Lee Salon	8
55' Cheoy Lee Galley	8
55' Cheoy Lee Dining	9
55' Cheoy Lee Master Stateroom	9
55' Cheoy Lee Port Forward Guest Stateroom	9
55' Cheoy Lee Starboard Forward Guest Stateroom	9
55' Cheoy Lee Forward Guest Stateroom	9
55' Cheoy Lee Laundry Room	9
55' Cheoy Lee Pilothouse	10
55' Cheoy Lee Flybridge	10
55' Cheoy Lee Aftdeck	10
55' Cheoy Lee Audio/Visual Equipment	10
55' Cheoy Lee Electronics	10
55' Cheoy Lee Electrical Equipment	11
55' Cheoy Lee Engine/Mechanical Equipment	11

55' Cheoy Lee Deck Equipment	12
55' Cheoy Lee Tender	12
55' Cheoy Lee Safety & Fire Protection	13
55' Cheoy Lee Exclusions	13
55' Cheoy Lee Disclaimer	13
Exclusions	13
Disclaimer	13
PHOTOS	14
55' Cheoy Lee port forward profile	14
55' Cheoy Lee port aft profile	14
55' Cheoy Lee anchor windlass	14
55' Cheoy Lee foredeck	14
55' Cheoy Lee foredeck aft	15
55' Cheoy Lee foredeck seating	15
55' Cheoy Lee port side deck photo1	15
55' Cheoy Lee port side deck photo2	15
55' Cheoy Lee starboard side deck photo1	16
55' Cheoy Lee starboard side deck photo2	16
55' Cheoy Lee flybridge forward	16
55' Cheoy Lee flybridge aft	16
55' Cheoy Lee flybridge helm	16
55' Cheoy Lee flybridge seating	16
55' Cheoy Lee boatdeck forward	17
55' Cheoy Lee flybridge grill	17
55' Cheoy Lee tender photo2	17
55' Cheoy Lee tender photo1	17
55' Cheoy Lee tender davit	17
55' Cheoy Lee aftdeck port	17
55' Cheoy Lee aftdeck starboard	18

55' Cheoy Lee swimplatform	18
55' Cheoy Lee salon forward	18
55' Cheoy Lee salon aft	18
55' Cheoy Lee salon port forward	18
55' Cheoy Lee salon port aft	18
55' Cheoy Lee salon stove	19
55' Cheoy Lee salon starboard aft	19
55' Cheoy Lee dining table	19
55' Cheoy Lee galley photo1	19
55' Cheoy Lee galley photo2	19
55' Cheoy Lee pilothouse port	19
55' Cheoy Lee pilothouse starboard	20
55' Cheoy Lee pilothouse helm photo1	20
55' Cheoy Lee pilothouse helm photo2	20
55' Cheoy Lee pilothouse desk	20
55' Cheoy Lee pilothouse-flybirsge stairs	20
55' Cheoy Lee master stateroom photo1	20
55' Cheoy Lee master stateroom port	21
55' Cheoy Lee master stateroom photo2	21
55' Cheoy Lee master stateroom starboard	21
55' cheoy Lee master stateroom forward	21
55' Cheoy Lee master stateroom head	21
55' Cheoy Lee master stateroom shower	21
55' Cheoy Lee starboard guest stateroom forward	22
55' Cheoy Lee starboard guest stateroom aft	22
55' Cheoy Lee port guest stateroom forward	22
55' Cheoy Lee port guest stateroom aft	22
55' Cheoy Lee port guest stateroom head	23
55' Cheoy Lee port guest stateroom shower	23

55' Cheoy Lee forward guest stateroom head	23
55' Cheoy Lee forward guest stateroom	23
55' Cheoy Lee forward guest stateroom shower	24
55' Cheoy Lee washer-dryer	24
55' Cheoy Lee engine room forward	24
55' Cheoy Lee engine room aft	24
55' Cheoy Lee port Racor fuel filters	25
55' Cheoy Lee port main engine	25
55' Cheoy Lee starboard Racor fuel filters	25
55' Cheoy Lee starboard main engine	25
55' Cheoy Lee stabilizer system	26
55' Cheoy Lee oil change system	26
55' Cheoy Lee water heaters	26
55' Cheoy Lee port generator	26
55' Cheoy Lee layout	27
55' Cheoy Lee starbaord generator	27
CONTACTS	28
Contact details	28
Telephones	28
Office hours	28
Address	28

SPECIFICATIONS

Overview

Ocean Dance is a classic 55' Cheoy Lee trawler offering a 4 staterooms, 3 head layout, bowthruster, stabilizers, naturally aspirated Caterpillar 210hp main engines, 2 X 20kW generators, 2570 gallon fuel capacity, numerous interior updates and a very attractive asking price. Ocean Dance is a proven bluewater, long distance cruiser, having cruised from Alaska to the Chesapeake and everywhere in between numerous times. Sellers have completed their cruising plans, so this perfect liveaboard or world passagemaker is ready for her next owner's enjoyment. Price reduced!

Basic Information

Category: Trawler

Sub Category: Long Range Cruiser

Model Year: 1982

Year Built: 1982

Country: United States

Vessel Top: Radar Arch and Bimini

Fly Bridge: Yes

Dimensions

LOA: 55' 0" (16.76m)

LWL: 50' 0" (15.24m)

Beam: 16' 5" (5.00m)

Min Draft: 5' 6" (1.68m)

Max Draft: 5' 6" (1.68m)

Speed, Capacities and Weight

Cruise Speed: 8 Kts. (9 MPH)

Max Speed: 11 Kts. (13 MPH)

Displacement: 100000 Pounds

Water Capacity: 450 Gallons

Holding Tank: 125 Gallons

Fuel Capacity: 2570 Gallons

Accommodations

Total Cabins: 4

Total Berths: 6

Sleeps: 8

Total Heads: 3

Hull and Deck Information

Hull Material: Fiberglass

Deck Material: Composite Fiberglass

Hull Configuration: Full Displacement

Hull Color: White

Hull Finish: Fiberglass

Engine Information

Engines: 2

Manufacturer: Caterpillar

Model: CAT 3208

Engine Type: Inboard

Fuel Type: Diesel

DETAILED INFORMATION

55' Cheoy Lee Overview

Ocean Dance is a classic 55' Cheoy Lee trawler offering a 4 staterooms, 3 head layout, bowthruster, stabilizers, naturally aspirated Caterpillar 210hp main engines, 2 X 20kW generators, 2570 gallon fuel capacity, numerous interior updates and a very attractive asking price. Ocean Dance is a proven bluewater, long distance cruiser, having cruised from Alaska to the Chesapeake and everywhere in between numerous times. Sellers have completed their cruising plans, so this perfect liveaboard or world passagemaker is ready for her next owner's enjoyment. Price reduced!

55' Cheoy Lee Vessel Walkthrough

Entering the salon from the covered aftdeck, you will find stairs to the master stateroom starboard aft, a dining table to starboard, the galley starboard forward, L-shaped seating port aft, a working Tewkesbury stove to port and cabinetry, a lounge chair port forward and stairs forward to the three guest staterooms and engine room. Continue to walk forward into the pilothouse, where you will find wing doors to each side deck and internal stairs to the flybridge.

55' Cheoy Lee Accommodations

Ocean Dance offers a full beam master stateroom aft with a king size berth and ensuite head, a guest stateroom starboard forward with a queen size berth, a guest stateroom port forward with over/under bunks and an ensuite head and a guest stateroom forward with v-berths. The forward guest stateroom and starboard forward guest stateroom share a head with enclosed shower.

55' Cheoy Lee Salon

The large salon offers L-shaped seating and a hi/lo teak table port aft, a working Tewkesbury stove to port, cabinetry and a lounge chair port forward, 2 lounge chairs starboard aft, entertainment center to starboard, 2 opening side windows, double aftdeck doors and a teak parquet sole.

55' Cheoy Lee Galley

The galley is located starboard forward in the salon.

- Frigidaire refrigerator/freezer
- GE Profile 4-burner ceramic electric cooktop

- GE Profile Advantium microwave oven
- Double stainless steel sinks
- Storage cabinets
- Whynter icemaker in the salon (2014)
- Sanyo refrigerator/freezer on the flybridge
- Aurora stainless steel BBQ grill on the flybridge

55' Cheoy Lee Dining

Dining space is available at the salon dining table, the salon hi/lo teak table port aft or the flybridge seating and table.

55' Cheoy Lee Master Stateroom

The full beam master stateroom aft offers a centerline king size berth, nightstands, six portlights, overhead hatch, teak parquet sole, storage drawers and cabinet, hanging lockers, shelves, vanity/desk and an ensuite head with enclosed shower and storage.

55' Cheoy Lee Port Forward Guest Stateroom

The port forward guest stateroom offers over/under bunks, 2 portlights, reading lights, hanging locker, storage drawers and an ensuite head with enclosed shower.

55' Cheoy Lee Starboard Forward Guest Stateroom

The starboard forward guest stateroom offers a queen size berth, built-in seat, desk, 2 portlights, storage cabinet and drawers and shelves. This stateroom shares a head with enclosed shower with the forward guest stateroom.

55' Cheoy Lee Forward Guest Stateroom

The forward guest stateroom offers a v-berth, 4 portlights, hanging locker, shelves and a teak parquet sole. This stateroom shares a head with enclosed shower with the starboard forward guest stateroom.

55' Cheoy Lee Laundry Room

Maytag washer (2014) and dryer

55' Cheoy Lee Pilothouse

The pilothouse was remodeled in 2013 and offers a full helm forward with storage underneath, Speich Clear View Screen in the center windshield, chart countertop and storage, wing doors to each side deck, a desk aft, internal stairs to the flybridge and same level access to the salon.

55' Cheoy Lee Flybridge

The flybridge offers a bimini top, removable Radar arch, teak deck forward and non-skid aft, full helm forward with storage underneath, Todd helmseat, L-shaped seating, with storage underneath, and table to starboard and a bar with frig/freezer and BBQ grill aft. The original centerline mast was removed and replaced with the hinged Radar arch in 2009.

55' Cheoy Lee Aftdeck

The covered aftdeck offers same level access to each side deck, transom gate, stainless steel ladder to the teak swimplatform, non-skid deck, teak cap rails and double teak && glass doors forward to the salon.

55' Cheoy Lee Audio/Visual Equipment

- KVH Tracvision 4 satellite TV system (2008)
- Sony Bravia flat screen TV in the salon
- Samsung DVD player in the salon
- Samsung flat screen TV in the master stateroom

55' Cheoy Lee Electronics

- 2 X Standard Horizon Spectrum VHF's in the pilothouse
- Horizon Ram Mic VHF on the flybridge
- Icom IC-M802 SSB in the pilothouse
- Garmin GMI10 depth and water temp gauge on the flybridge and in the pilothouse
- Sestrel magnetic compass in the pilothouse

-
- Raytheon Raypilot 650 autopilot on the flybridge and in the pilothouse
 - Furuno GP-37 DGPS in the pilothouse
 - Furuno Radar
 - Nobeltec 48nm open array Radar
 - Nobeltec AIS
 - HP ship's computer with Nobeltec electronic chart software and WeatherWorks software
 - Big Bay monitor in the pilothouse for the ship's computer
 - Nauticomp monitor as a repeater for the pilothouse ship's computer on the flybridge
 - Davis Vantage Pro2 weather station in the pilothouse
 - Aiphone TB-6F intercom system
 - Weems & Plath barometer and clock in the salon
 - Seth Thomas barometer and clock in the pilothouse

55' Cheoy Lee Electrical Equipment

- 2 X Onan 20kw generators (4058 hours - port/5193 hours - starboard) (New raw water pump and new starter on port in 2014)
- Perko battery switches
- Mastervolt 12/40-3 battery charger (2013)
- ProMariner ProNautic 24 20p bowthruster battery charger (2013)
- 4 X 8D batteries new in 2014
- 2 X Group 31 batteries new in 2014
- 50 amp shore cord

55' Cheoy Lee Engine/Mechanical Equipment

- Twin naturally aspirated Caterpillar 3208 210hp main engines (6112 hours)
- Racor 75/1000 fuel filters with vacuum gauges for the main engines

- Racor R252 fuel filters for each generator
- Fuel manifold and transfer system
- Reverso oil change system
- Groco sea strainers
- Lewmar bowthruster
- Naiad 252 stabilizer system (Service and new seals in 2013)
- Cruisair reverse cycle air conditioning/heating system (New raw water pump in 2013)
- AquaMarin watermaker (New high pressure pump in 2013)
- 2 X Seaward 11 gallon water heaters
- New fresh water system pump in 2013
- Techma heads (Rebuilt in 2013)
- Tank Tender tank level gauge

55' Cheoy Lee Deck Equipment

- Neco Marine anchor windlass
- 2 X 190lb Navy style anchors
- Non-skid decks
- Teak swimplatform
- Teak cap rails on each side and aft and stainless steel rails forward
- Swim ladder
- Aluminum deck hardware
- Boarding gate amidships each side deck
- Foredeck benchseat and storage lockers

55' Cheoy Lee Tender

Novurania 430DL RIB

- Yamaha 60hp outboard (2005)
- Tender davit

55' Cheoy Lee Safety & Fire Protection

- Life jackets
- Fire extinguishers
- Lifesling2 Man Overboard System

55' Cheoy Lee Exclusions

Sellers' personal belongings

- Artwork

55' Cheoy Lee Disclaimer

The Company offers the details of this vessel in good faith but cannot guarantee or warrant the accuracy of this information nor warrant the condition of the vessel. A buyer should instruct his agents, or his surveyors, to investigate such details as the buyer desires validated. This vessel is offered subject to prior sale, price change, or withdrawal without notice.

Exclusions

Owner's personal belongings.

Disclaimer

The Company offers the details of this vessel or yacht in good faith but cannot guarantee or warrant the accuracy of this information nor warrant the condition of the vessel. A buyer should instruct his representatives, agents, or his surveyors, to investigate such details as the buyer desires validated. This vessel or yacht is offered subject to prior sale, price change, or withdrawal without notice.

PHOTOS

55' Cheoy Lee port forward profile



55' Cheoy Lee port aft profile



55' Cheoy Lee anchor windlass



55' Cheoy Lee foredeck



55' Cheoy Lee foredeck aft



55' Cheoy Lee foredeck seating



55' Cheoy Lee port side deck photo1



55' Cheoy Lee port side deck photo2



55' Cheoy Lee starboard side deck photo1



55' Cheoy Lee starboard side deck photo2



55' Cheoy Lee flybridge forward



55' Cheoy Lee flybridge aft



55' Cheoy Lee flybridge helm



55' Cheoy Lee flybridge seating



55' Cheoy Lee flybridge grill



55' Cheoy Lee boatdeck forward



55' Cheoy Lee tender photo2



55' Cheoy Lee tender photo1



55' Cheoy Lee tender davit



55' Cheoy Lee aftdeck port



55' Cheoy Lee aftdeck starboard



55' Cheoy Lee swimplatform



55' Cheoy Lee salon forward



55' Cheoy Lee salon aft



55' Cheoy Lee salon port forward



55' Cheoy Lee salon port aft



55' Cheoy Lee salon stove



55' Cheoy Lee salon starboard aft



55' Cheoy Lee dining table



55' Cheoy Lee galley photo1



55' Cheoy Lee galley photo2



55' Cheoy Lee pilothouse port



55' Cheoy Lee pilothouse starboard



55' Cheoy Lee pilothouse helm photo1



55' Cheoy Lee pilothouse helm photo2



55' Cheoy Lee pilothouse desk



55' Cheoy Lee pilothouse-flybirdsge stairs



55' Cheoy Lee master stateroom photo1



55' Cheoy Lee master stateroom photo2



55' Cheoy Lee master stateroom port



55' Cheoy Lee master stateroom starboard



55' cheoy Lee master stateroom forward



55' Cheoy Lee master stateroom head



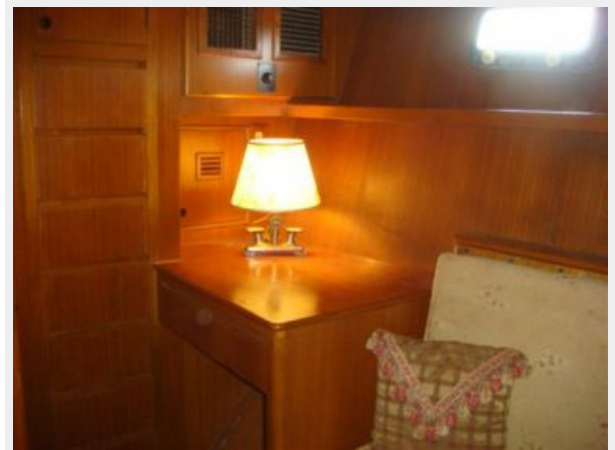
55' Cheoy Lee master stateroom shower



55' Cheoy Lee starboard guest stateroom aft



55' Cheoy Lee starboard guest stateroom forward



55' Cheoy Lee port guest stateroom forward



55' Cheoy Lee port guest stateroom aft



55' Cheoy Lee port guest stateroom head



55' Cheoy Lee port guest stateroom shower



55' Cheoy Lee forward guest stateroom head

55' Cheoy Lee forward guest stateroom



55' Cheoy Lee forward guest stateroom shower



55' Cheoy Lee washer-dryer



55' Cheoy Lee engine room forward



55' Cheoy Lee engine room aft



55' Cheoy Lee port main engine



55' Cheoy Lee port Racor fuel filters



55' Cheoy Lee starboard main engine



55' Cheoy Lee starboard Racor fuel filters



55' Cheoy Lee oil change system



55' Cheoy Lee stabilizer system



55' Cheoy Lee water heaters

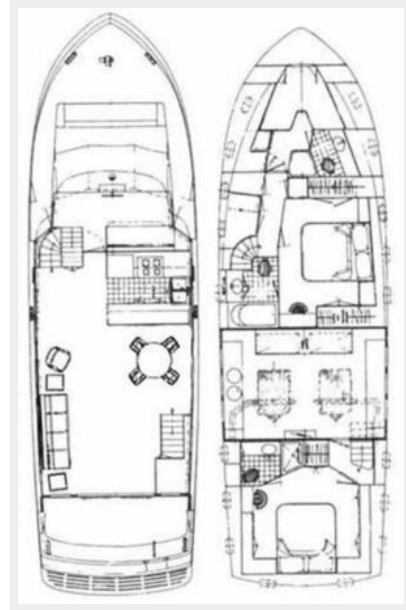


55' Cheoy Lee port generator



55' Cheoy Lee layout

55' Cheoy Lee starbaord generator



CONTACTS

Andrey Shestakov, leading yacht broker of the sales department of Shestakov Yacht Sales Inc. Shestakov Yacht Sales Inc., the official representative of the Miami/Fort Lauderdale FL headquarters.

Contact details

Email: andrey@shestakovyachtsales.com

Web: shestakovyachtsales.com/en/

Telephones

USA: +1(954)274-4435

Office hours

Monday – Saturday: **9:00 - 21:00** EDT

Sunday: **closed**

Address



Harbour Towne Marina, 850 NE 3rd St,
STE 213, Dania, FL 33004