

LOW HOURS — SILVERTON



Builder: SILVERTON

Year Built: 2006

Model: Motor Yacht

Price: PRICE ON APPLICATION

Location: United States

LOA: 45' 0" (13.72m)

Beam: 15' 4" (4.67m)

Max Draft: 3' 9" (1.14m)

Our experienced yacht broker, Andrey Shestakov, will help you choose and buy a yacht that best suits your needs **Low Hours — SILVERTON** from our catalogue. Presently, at Shestakov Yacht Sales Inc., we have a wide variety of yachts available on our sale's list. We also work in close contact with all the big yacht manufacturers from all over the world.

If you would like to buy a yacht **Low Hours — SILVERTON** or would like help answering any questions concerning purchasing, selling or chartering a yacht, please call **+1(954)274-4435**

TABLE OF CONTENTS

TABLE OF CONTENTS	2
SPECIFICATIONS	5
Basic Information	5
Dimensions	5
Speed, Capacities and Weight	5
Accommodations	5
Hull and Deck Information	5
Engine Information	6
DETAILED INFORMATION	7
Accommodations	7
Galley	7
Electrical	8
Deck	8
Exclusions	8
Disclaimer	9
PHOTOS	10
Port Profile	10
Bow	10
Bow	10
Bow	10
Bow facing aft	10
Bow Pulpit / Electronic Windlass	10
Cockpit	11
45 Convertible	11
Cockpit	11
Cock	11
Cockpit Wet Bar	11
Cockpit	11

Ice Maker in Cockpit	12
Helm Station	12
Helm Station	12
Forward Seating of Helm	12
Helm Station	12
Helm Station	12
VHF / Bow Thruster	13
Northstar 6000i	13
Furuno NavNet	13
Electronic Controls	13
Molded Stairs	13
Salon Facing Forward	13
Galley	14
Salon Facing Aft	14
Starboard Seating	14
Salon Facing Aft	14
Port Seating / Salon	14
Galley	14
Pop-up Flat Screen TV	15
Facing Forward	15
Galley	15
Hallway Facing Forward	15
Master Stateroom	15
Master Stateroom	15
Master Stateroom	16
Master Stateroom	16
Master Head/Shower	16
Master Head/Shower	16
Starboard Guest Stateroom	16

Starboard Guest Stateroom	16
Starboard Guest Stateroom	17
Starboard Guest Stateroom	17
Port Guest Stateroom	17
Port Guest Stateroom	17
Port Guest Stateroom	17
Day Head / Shower - Port Side	17
Day Head / Shower - Port Side	18
Engine Room (facing Aft)	18
Engine Room	18
Engine Room	18
Engine Room	18
Engine Room	18
Engine Room	19
Engine Room	19
Generator	19
Generator	19
Generator	19
Layout	19
Swim Platform	20
Swim Platform / Lift	20
CONTACTS	21
Contact details	21
Telephones	21
Office hours	21
Address	21

SPECIFICATIONS

Basic Information

Category: Motor Yacht

Sub Category: Convertible

Model Year: 2006

Year Built: 2006

Country: United States

Dimensions

LOA: 45' 0" (13.72m)

Beam: 15' 4" (4.67m)

Max Draft: 3' 9" (1.14m)

Clearance: 16' 10" (5.13m)

Speed, Capacities and Weight

Displacement: 38000 Pounds

Water Capacity: 120 Gallons

Holding Tank: 72 Gallons

Fuel Capacity: 612 Gallons

Accommodations

Total Berths: 6

Total Heads: 1

Hull and Deck Information

Hull Material: Fiberglass

Engine Information

Engines: 2

Manufacturer: Volvo Penta

Model: D12-715

Engine Type: Inboard

Fuel Type: Diesel

DETAILED INFORMATION

Accommodations

Sleeps Six;

Master Stateroom Fwd-Sleeps Two

2nd Stateroom, Portside-Side by Side-Sleeps Two Separately

3rd Stateroom, Starboard, full Sized-Sleeps Two

HEADS;

Master Head, (Private) to Starboard

Large Separate Stall Shower

Vacuflush Fresh Water Toilet

Dupont "Corian" Counters

Ample Cherry Upper/Lower Storage Lockers

Day Head to Port

Vacuflush Fresh Water Toilet

Dupont "Corian" Counters

Large Separate Stall Shower

Ample Cherry Upper/Lower Lockers

Galley

Separate Subzero Under-counter Refrigerator and Freezer

Dupont "Corian" Counters-Forward and Aft Galley

Large Circular Polished Stainless Steel Sink

Kenyon "Euro Kera" 3 Burner Flush Mount Electric Stove

Sharp Carousel Microwave/Convection Oven

Ample Upper/Lower Cherry Drawers and Lockers

Electrical

50 Amp Dockside Power w/Cord

Glendenning Cablemaster

Port and Stb Pro Mariner 25 Amp Converters/Battery Chargers

Kohler 13 kW Generator w/Sound Shield (360 Hours)

Marine Air, Air Conditioning, Reverse Cycle--3 Zone

Attwood 20 Gallon Hot Water Heater

Samsung 26" Digital Flat Screen Salon TV w/Lift

Deck

Bow Pulpit

ACR, URP-102 Remote Spotlight, Helm Controls

Maxwell Windlass w/Plow Anchor, Chain and Rode

Bow Thruster

Large Sunpad

Black Mesh Salon Windshield Cover

Hardtop /Four Sided Enclosure, (Black)

Custom Helm and Captain/Mate's Seat

Breaker Panel on Helm

Cockpit Cabinet on Port Side

Raritan Ice Maker--Cockpit Cabinet

Cockpit Hatches w/Bins

Hot and Cold Transom Shower

Swim Platform

Exclusions

Owner's personal belongings.

Disclaimer

The Company offers the details of this vessel or yacht in good faith but cannot guarantee or warrant the accuracy of this information nor warrant the condition of the vessel. A buyer should instruct his representatives, agents, or his surveyors, to investigate such details as the buyer desires validated. This vessel or yacht is offered subject to prior sale, price change, or withdrawal without notice.

PHOTOS

Bow



Port Profile



Bow



Bow



Bow facing aft



Bow Pulpit / Electronic Windlass



45 Convertible



Cockpit



Cockpit



Cock



Cockpit Wet Bar



Cockpit



Ice Maker in Cockpit



Helm Station



Helm Station



Forward Seating of Helm



Helm Station



Helm Station



Northstar 6000i



VHF / Bow Thruster



Electronic Controls



Furuno NavNet



Molded Stairs



Salon Facing Forward



Galley



Salon Facing Aft



Starboard Seating



Salon Facing Aft



Port Seating / Salon



Galley



Pop-up Flat Screen TV



Facing Forward



Galley



Hallway Facing Forward



Master Stateroom



Master Stateroom



Master Stateroom



Master Stateroom



Master Head/Shower



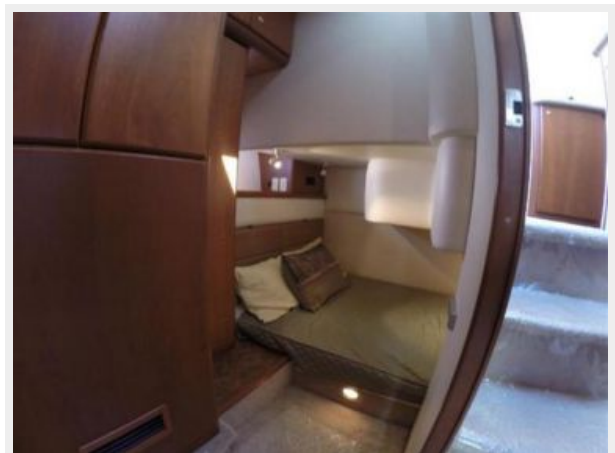
Master Head/Shower



Starboard Guest Stateroom



Starboard Guest Stateroom



Starboard Guest Stateroom



Starboard Guest Stateroom



Port Guest Stateroom



Port Guest Stateroom



Port Guest Stateroom



Day Head / Shower - Port Side



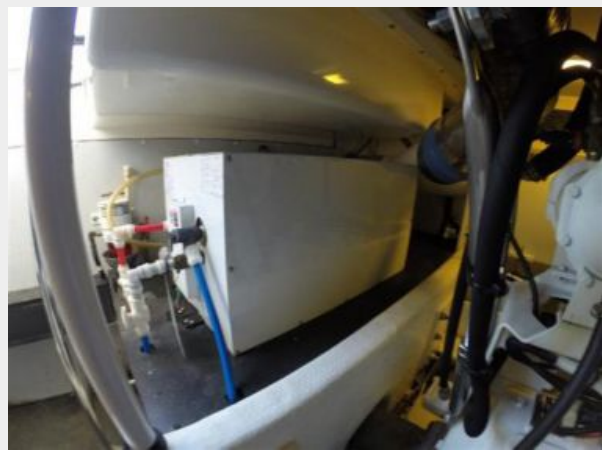
Day Head / Shower - Port Side



Engine Room (facing Aft)



Engine Room



Engine Room



Engine Room



Engine Room



Engine Room



Engine Room



Generator



Generator



Generator



Layout



Swim Platform / Lift



Swim Platform



CONTACTS

Andrey Shestakov, leading yacht broker of the sales department of Shestakov Yacht Sales Inc. Shestakov Yacht Sales Inc., the official representative of the Miami/Fort Lauderdale FL headquarters.

Contact details

Email: andrey@shestakovyachtsales.com

Web: shestakovyachtsales.com/en/

Telephones

USA: +1(954)274-4435

Office hours

Monday – Saturday: **9:00 - 21:00** EDT

Sunday: **closed**

Address



Harbour Towne Marina, 850 NE 3rd St,
STE 213, Dania, FL 33004