

## MOMENTUM — HALLBERG-RASSY



**Builder:** HALLBERG-RASSY

**Year Built:** 1997

**Model:** Cruising Sailboat

**Price:** PRICE ON APPLICATION

**Location:** United Kingdom

**LOA:** 48' 6" (14.78m)

**Beam:** 14' 3" (4.34m)

**Min Draft:** 6' 2" (1.88m)

Our experienced yacht broker, Andrey Shestakov, will help you choose and buy a yacht that best suits your needs **MOMENTUM — HALLBERG-RASSY** from our catalogue. Presently, at Shestakov Yacht Sales Inc., we have a wide variety of yachts available on our sale's list. We also work in close contact with all the big yacht manufacturers from all over the world.

If you would like to buy a yacht **MOMENTUM — HALLBERG-RASSY** or would like help answering any questions concerning purchasing, selling or chartering a yacht, please call **+1(954)274-4435**

# TABLE OF CONTENTS

---

TABLE OF CONTENTS	2
SPECIFICATIONS	4
Overview	4
Basic Information	4
Dimensions	4
Speed, Capacities and Weight	4
Accommodations	4
Hull and Deck Information	5
Engine Information	5
DETAILED INFORMATION	6
Owner's Remarks	6
Construction	6
Machinery	6
Electrical Systems	7
Plumbing Systems	8
Tankage	8
Navigation Equipment	9
Domestic Equipment	9
Accommodation	11
Deck Equipment	13
Exclusions	16
Disclaimer	16
PHOTOS	17
CONTACTS	21
Contact details	21
Telephones	21
Office hours	21
Address	21



---

# SPECIFICATIONS

---

## Overview

---

Good looking German Frers with a great spec fro bluewater cruising. The Hallberg Rassy 46 sets the standard for comfortable cruising.

## Basic Information

---

**Category:** Cruising Sailboat

**Sub Category:** Center Cockpit

**Model Year:** 1997

**Year Built:** 1997

**Country:** United Kingdom

## Dimensions

---

**LOA:** 48' 6" (14.78m)

**LWL:** 39' 0" (11.89m)

**Beam:** 14' 3" (4.34m)

**Min Draft:** 6' 2" (1.88m)

## Speed, Capacities and Weight

---

**Displacement:** 48501.69764 Pounds

**Water Capacity:** 243.03828784 Gallons

**Fuel Capacity:** 174.35355432 Gallons

## Accommodations

---

**Total Cabins:** 3

**Total Berths:** 6

**Total Heads:** 2

---

## Hull and Deck Information

---

**Hull Material:** GRP

**Deck Material:** Teak

**Hull Designer:** German Frers

---

## Engine Information

---

**Engines:** 1

**Manufacturer:** Volvo Penta

**Model:** TAMD31S

**Engine Type:** Inboard

**Fuel Type:** Diesel

---

# DETAILED INFORMATION

---

## Owner's Remarks

---

We had hoped to sail Momentum further afield than the Mediterranean but had to abandon our plans for health reasons.

## Construction

---

*RCD Status: Our understanding is that the yacht is exempt from the essential safety requirements of Directive 94/25EC (Recreational Craft Directive) as she was built and placed into use within the EU prior to 1998.*

### *Hull, Deck & Superstructure Construction:*

- Laid teak on deck, coachroof and hardtop.
- GRP sandwich construction 35mm for strength and insulation.
- Hull and deck joined by overlapping GRP laminate.
- Bulwark formed in deck & hull mouldings fitted with solid capping in teak.
- Handrails, companionway, hatch guides, sold and seats in cockpit in solid Bangkok teak.
- Deck to be re-caulked and re-plugged 2013/14.

### *Keel & Rudder:*

- Long Fin.
- Moderate fin keel.

## Machinery

---

### *Engine & Gearboxes:*

- 1 x Volvo Penta TAMD31S 74kW/100hp 4 cylinders, 2.4 litres/146 cubic inches, direct injected marine diesel with turbo and aftercooler; engine hours approx. 2,439 as of 14/08/14.
- The engine is fresh water cooled and equipped with oil cooler.

- Instruments comprise RPM-meter, temperature gauge and oil pressure.
- Acoustic and optic warning.
- Good sound insulation plus an additional heavy carpet.
- The engine is accessible either from a bolted hatch in cockpit or from the passageway between the main and aft cabin. All pumps can be accessed from here.

#### *Propulsion & Steering:*

- Spurs rope cutter (2004).
- Single level control for RPM and gear shift.
- 3 bladed folding J-prop.
- Shaft in stainless steel.
- Cutlass water lubricated rubber shaft bearing.
- AquaDrive flexible link.
- 10hp Sleipner bow thruster.

## **Electrical Systems**

---

#### *Voltage Systems:*

- 12 and 24v DC power supplies.

#### *Battery Banks:*

- 6 x Batteries (Engine start, domestic 2009 4 x 12v for 24 service 2010).
- Mastervolt battery monitor (Masterlink 20).
- Remote Mastervolt battery monitors (2006).

#### *Invertors:*

- Mastervolt 1500w inverter.

- Remote Mastervolt inverter monitor (2006).

#### *Generator:*

- Fisher Panda 6kW generator with separate start battery; hours approx. 2,493 as of 14/08/14.

#### *Shore Power:*

- Shore power with 2 x 12v and 2 x 24v battery chargers.
- Shore power updated to 32amp (2009).

## **Plumbing Systems**

---

#### *Fresh Water & Water Heating System:*

- Hot and cold water.
- Hot water calorifier.

#### *Watermaker:*

- MT freshwater AB watermaker, 135 litres per hour.

#### *Bilge Pumps:*

- 24v deck wash pump that doubles as bilge pump.
- 24v bilge pump in lower bilge with float switch.
- Separate high output 24v bilge pump with float switch and alarm at helm.
- Amazon Warrior hand bilge pump.

## **Tankage**

---

#### *Fuel:*



- Total capacity 660 litres.

#### *Fresh water:*

- Total capacity 920 litres.

#### *Blackwater holding tanks:*

- Renewed 2009 (Polyethylene) with all pipe work and valves.

---

## **Navigation Equipment**

---

- Autohelm ST50 wind, speed, depth & VMG with multi displays at chart table and aft cabin.
- Autohelm GPS.
- Autohelm Navcentre chartplotter.
- GPS repeater on steering pedestal.
- Robertson AP 300XL autohelm (overhaul 2009).
- Furuno 1831 radar 10" screen with scanner on mast.
- Dismountable Furuno radar repeater.
- Shipmate RS 8300 VHF.
- Complete second station Simrad AP 25 autopilot with Lewmar Mamba drive fitted 2009.
- Furuno SSB MF radio.

---

## **Domestic Equipment**

---

#### *General:*

- Washing machine.

#### *Galley:*

- Force Ten three burner cooker with oven.

- Double stainless steel sinks.
- Frigomatic fridge unit with access from work top and professionally made shelving inside.
- Microwave oven.
- Manual fresh water pump in Galley.
- Separate Frigomatic freezer located behind navigation station.
- New compressors fitted to both fridge and freezer (2000).

#### *Heads/Showers:*

- 1 x Marine W/C with polyethylene holding tank (2009).
- 1 x 24v Sanimarin WC in aft en-suite (2011).
- 2 x Showers.
- 1 x Hot and cold shower at bathing platform.

#### *Heating & Ventilation:*

- 2 x Webasto warm air.
- Two reverse cycle air-conditioning installed in aft cabin and saloon in 2009; will run on the generator or shore power.

#### *Entertainment:*

- Stereo/CD player (2010).
- Stereo/CD player.

#### *Lighting:*

- 90% of internal lighting and all navigation lights converted to LED's 2011.
- Deck light

---

## Accommodation

---

### Summary of Accommodation:

- 6 berths in 4 cabins.
- Interior woodwork finished in teak.
- Slatted lining to all shelves and lockers and all bunk tops drilled providing a constant flow of air through the boat and minimizing the possibilities of condensation.
- Carpets throughout and curtains at all skylights and portlights.
- Lee cloths to all berths.
- All cabins and saloon fitted with 24v Hella electric fans.
- Mattress covers on all berths from new.
- Loose covers on all upholstery in main saloon.

### *Description of layout from forwards:*

#### *Forward Cabin:*

- Double V berth with lockers above and stowage beneath.
- Hanging locker.
- Opening skylight.
- Brass reading lamps.

#### *Port Side Cabin:*

- Two single bunks.
- Port lights.
- Vanity unit and hanging lockers.
- Reading lamps.
- Mirror.

*Forward Heads:*

- White laminate with teak woodwork trim.
- Porcelain wash hand basin with lockers below and mirror over.
- Separate shower stall.
- Opening portlight.
- Skylight.

*Saloon:*

- Straight berth to starboard and L-shaped berth to port.
- Backrests pull down to reveal shelved stowage.
- Lockers and shelving above backrests.
- Opening skylights.
- Reading lamps.
- Centre line drop leaf table with opening centre section for bottle storage.

*Galley:*

- Ample stowage above and beneath work surfaces for crockery, cutlery and other kitchen utensils.
- Corian white work surfaces.

*Chart Table:*

- To port.
- Navigators seat with stowage under.
- Full size chart table with lifting top for charts etc.
- 4 x Drawers under chart table and a further locker to port.

- Lockers, including one hanging behind navigator's seat.
- Engine room access opposite.

#### *Aft Cabin:*

- Double berth on centre line with dressing seat.
- Hanging lockers, vanity unit and shelving above berths.
- Reading lamps.
- Access to ensuite heads compartment.

#### *Ensuite Heads:*

- Porcelain wash hand basin with lockers below and mirror over.
- Separate shower stall with teak grating.

## **Deck Equipment**

---

#### *Rig:*

- All spars and rigging from Selden.
- Sloop rig with double spreaders.
- Inmast furling and furling genoa.
- Cutter stay with runners.
- Navtec backstay tensioner.
- Complete spinnaker equipment including pole on mast.
- Insulated backstay.
- Furlex forestay system fitted in 2014, and Selden in-mast furling (2013).

#### *Winches:*

- Halyard winches; 1 x Lewmar 48 CST self tailing; 2 x Lewmar 44 CST self tailing; 1 x

### Lewmar 8 C.

- Primary electric winches. Lewmar 64 CST.
- Mainsheet winches. Lewmar 44 CST.
- Spinnaker winches. Lewmar 54 CST.

### *Sails:*

- Maxiroach Furling main sail Sanders sails 2005.
- Bi-radial genoa with e-foam 65 square metre Sanders Sails 2005.
- Working jib and cutter stay jib were used on delivery trip from Turkey in 2014. Previously unused.
- Cruising spinnaker 140 square metre.
- Furling Gennakker with stainless steel bowsprit 2006 Sanders Sails
- Cruising chute with sock Crusader sails 2006
- Storm jib 2006 unused
- Trisail 2006 unused

### *General:*

- Gates amidship with fixed stainless steel boarding ladders.
- Fixed stainless steel boarding ladder on the stern.
- Deck wash pump.
- Teak outboard bracket.
- 2 x Large lazarettes and a cockpit locker.
- Tricolour navigation light at masthead.
- Simpson davits (2006).

### *Anchoring & Mooring Equipment:*

- 75lb CQR anchor.
- Electric anchor windlass controlled from bows and cockpit.
- Brass strips by all cleats.
- 70m new chain (2009).

#### *Covers, Canvas & Cushions:*

- Pushpit seats.
- Folding bimini with frames.
- Enclosed cockpit covers and frame.
- Summer awning.
- Complete winter cover in 3 sections.
- Fitted cockpit cushions.(2013)

#### *Tender & Outboard:*

- Avon rib lite (2006) with 8 HP Suzuki.

#### *Safety Equipment:*

- Double guardrails on stainless stanchions.
- Extra grab handles on aft deck.
- 8 man liferaft serviced 2010.
- Jonbuoy lifesling.
- Radar reflector.
- Webbing jack stays.
- 8 self inflating life jackets.
- 2 x EPIRB. (Require new batteries)

*Fire-fighting equipment:*

- Fire extinguishers in each compartment.
- Fire blanket in Galley.

## **Exclusions**

---

Owner's personal belongings.

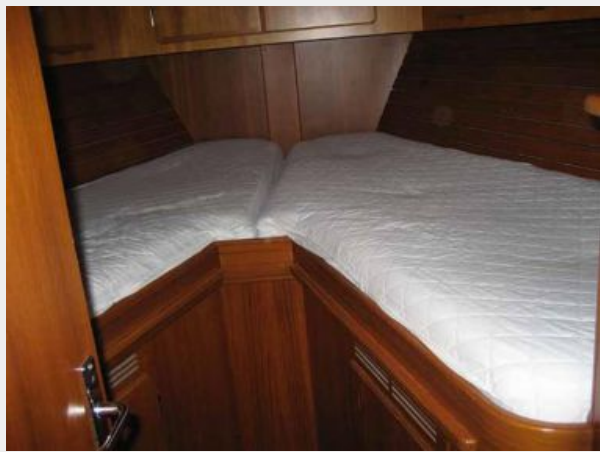
## **Disclaimer**

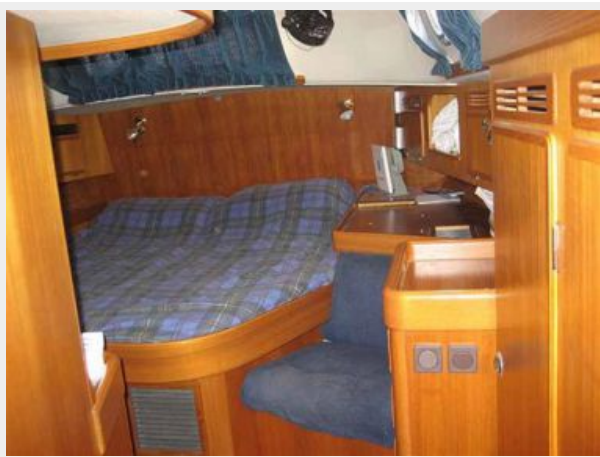
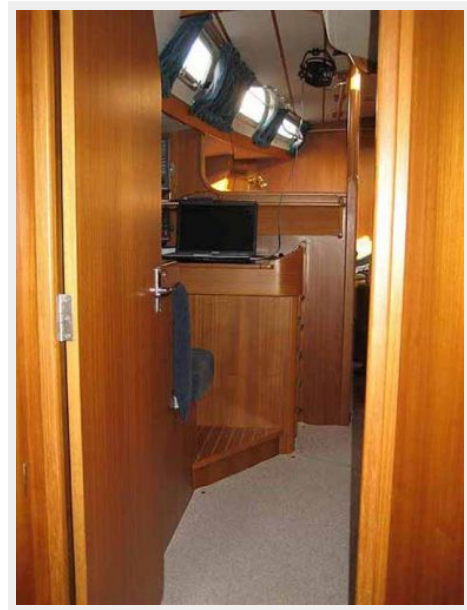
---

The Company offers the details of this vessel or yacht in good faith but cannot guarantee or warrant the accuracy of this information nor warrant the condition of the vessel. A buyer should instruct his representatives, agents, or his surveyors, to investigate such details as the buyer desires validated. This vessel or yacht is offered subject to prior sale, price change, or withdrawal without notice.



# PHOTOS









# CONTACTS

---

Andrey Shestakov, leading yacht broker of the sales department of Shestakov Yacht Sales Inc. Shestakov Yacht Sales Inc., the official representative of the Miami/Fort Lauderdale FL headquarters.

## Contact details

---

Email: [andrey@shestakovyachtsales.com](mailto:andrey@shestakovyachtsales.com)

Web: [shestakovyachtsales.com/en/](http://shestakovyachtsales.com/en/)

## Telephones

---

USA: +1(954)274-4435

## Office hours

---

Monday – Saturday: **9:00 - 21:00** EDT

Sunday: **closed**

## Address

---



Harbour Towne Marina, 850 NE 3rd St,  
STE 213, Dania, FL 33004