

OUTTA THE LOOP — NAVIGATOR



Судостроитель: NAVIGATOR

Год постройки: 1999

Модель: Моторная яхта

Цена: **ЦЕНА ЯХТЫ ПО ЗАПРОСУ**

Местонахождение: United States

Длина общая: 48' 0" (14.63m)

Ширина: 15' 0" (4.57m)

Мин. осадка: 4' 5" (1.35m)

Макс. осадка: 4' 6" (1.37m)

Крейс. скорость: 17 Kts. (20 MPH)

Макс. скорость: 22 Kts. (25 MPH)

Купить **Outta The Loop — NAVIGATOR** а также выбрать подходящую вам яхту из нашего каталога яхт вам поможет опытный яхтенный брокер Андрей Шестаков. На сегодняшний день компания **Shestakov Yacht Sales Inc.** имеет большое количество яхт в собственном списке продаж, а также тесно сотрудничает со всеми крупными яхтенными производителями по всему миру.

Для того чтобы купить яхту **Outta The Loop — NAVIGATOR** а также проконсультироваться по любому вопросу связанному с покупкой, продажей, чартером яхт позвоните по телефону **+7(918)465-66-44**.

ОГЛАВЛЕНИЕ

ОГЛАВЛЕНИЕ	2
ХАРАКТЕРИСТИКИ	4
Обзор	4
Основная информация	4
Размеры	4
Скорость, вместимость и масса	4
Размещение	5
Корпус и палуба	5
Информация о двигателе	5
ПОДРОБНОЕ ОПИСАНИЕ	6
Overview	6
Interior Layout	6
Navigation/Electronics/Controls	6
Mechanical Systems	6
Gear/Equipment	7
Galley	7
Entertainment	7
Recent Service & Upgrades	7
Accommodations	7
Specifications	8
Main Salon	8
Pilothouse	8
Companion Way to Master & VIP	9
Master Stateroom	9
Master Head	9
VIP	9
Flybridge	9
Boat Deck	10

Исключения	10
Отказ от ответственности	10
ФОТОГРАФИИ	11
КОНТАКТЫ	21
Контактная информация	21
Телефоны	21
Время работы	21
Адрес	21

ХАРАКТЕРИСТИКИ

Обзор

This Navigator has been professionally maintained by the present owner for over ten years. She is in good condition and has always been on a strict maintenance schedule. Engine oil changed very 100 hours, engines zincs always checked along with all fluids. Owner is moving up to a larger yacht and wants this one to find a good home. Special features include water maker and Garmin #3210 network, radar and chart plotter, new isinglass on all four sides for flybridge Bimini top. ***Please contact Skip Denison to schedule an appointment! 954 (806 - 6225) Skip@DenisonYachtSales.com***

Основная информация

Тип судна: Моторная яхта

Модельный год: 1999

Год постройки: 1999

Страна: United States

Размеры

Длина общая: 48' 0" (14.63m)

Длина по ватерлинии: 48' 2" (14.68m)

Ширина: 15' 0" (4.57m)

Мин. осадка: 4' 5" (1.35m)

Макс. осадка: 4' 6" (1.37m)

Трапы: 19' 0" (5.79m)

Длина привального бруса: 52' 8"
(16.05m)

Скорость, вместимость и масса

Крейс. скорость: 17 Kts. (20 MPH)

Макс. скорость: 22 Kts. (25 MPH)

Дальность на макс. скорости: 350 Kts.

Водоизмещение: 37000 Pounds

Вместимость воды: 100 Gallons

Вместимость сточного бака: 70 Gallons

Объем топливного бака: 550 Gallons

Размещение

Всего кают: 2

Всего коек: 2

Всего ком. состава: 2

Корпус и палуба

Материал корпуса: Fiberglass

Информация о двигателе

Двигатели: 2

Производитель: Volvo

Модель: TAMD 63

Тип двигателя: Inboard

Тип топлива: Diesel

ПОДРОБНОЕ ОПИСАНИЕ

Overview

The thoughtfully designed 48 Classic pilothouse offers excellent performance from its fuel efficient hull with outstanding handling characteristics resulting in a smooth, comfortable ride. The pilothouse has an efficient layout for operating the vessel, and the fully enclosed and spacious flybridge has a secondary helm station plus an entertainment area with unobstructed visibility. The galley and salon are incorporated into the same area. The two stateroom layout offers privacy. The optional Bird's Eye Maple woodwork enhances the open airy feeling throughout the interior spaces. The baise leather upholstery is coordinated with baise curtains, an off-white headliner, and Celery Green carpeting and area rugs. This is the perfect layout for a pilothouse vessel of this size.

Interior Layout

The lower deck is accessed via a stairwell from the starboard side of the pilothouse. The master stateroom is located amidships with queen berth, ample storage and an ensuite head compartment with separate stall shower. The forward guest stateroom features a centerline queen berth, and also has ample storage and an ensuite head compartment with separate stall shower. An additional storage locker located outboard to starboard at the bottom of the stairwell. The slightly raised amidship pilothouse features the helm/control console forward with a single helm chair. To port is a dinette style table, and to starboard is a sliding door with access to the side deck. The flybridge is accessed from the steps just aft of the helm area. The electrical panel is located in the walkway leading aft to the salon/galley area. The L-shaped galley is located on the port side forward, and just aft is the entertainment center. Opposite to starboard is a sitting couch, coffee table and more storage.

Navigation/Electronics/Controls

PILOTHOUSE Full engine instrumentation Raytheon RL80C radar Raytheon Raypilot autopilot GARMIN Network 3210 Chartplotter GARMIN GPS Network ICOM MC-45 VHF Danforth compass Bennett trim tabs Glendinning synchronizer Sidepower bow/stern thruster ITT Jabsco search light Windshield wipers Dual sounding horns

FLYBRIDGE Full engine instrumentation Raytheon L760 Fishfinder ICOM M127 VHF Bennett trim tab controls Richie compass Satfind 406 GPIRB Glendinning synchronizer ITT Jabsco search light Sidepower bow/stern thruster Hailer Portable 12V handheld Sportspot

Mechanical Systems

12 volt DC service and 50 amp 110 volt AC service Excellent access to all machinery NEW Three 8-D ships batteries (6/14) Two battery parallel switches Delux corrosion control system Three Marine Air AC/heat systems Two 8-D thruster batteries Westerbeke 9.0 kw generator Racor fuel filters (dual) Perko sea strainers Dripless shaft seals Promariner 80 battery charger Raritan 20 gallon hot water heater Forward/aft auto/manual bilge pumps Vacuflush toilets with macerators Nutone central vacuum system Shore power cord Accoustical insulation 2000 Invertor

Gear/Equipment

4 person canister life raft Life-sling and life ring 8 life vests Fire extinguishers S/S telescoping swim ladder GE washer & dryer (separate units) Cockpit shower Danforth style anchor with chain Muir electric windless w/remotes Interceptor TV/FM remote antenna Bimini top with full enclosure Window covers Bowmar foredeck hatch Fishing rod holders Teak cockpit table and chairs

Galley

Double Galley Sinks Microwave/Convection Cook Top with Sea Rails Sliding Glass Dish/glass cabinet 2 Large Storage Cabinet portside under counter 3 Drawers under counter 3 Medium Cabinets under counter. Garbage Disposal Apartment size Refrigerator 5.3 Cubic Foot Freezer 1.7 Cubic Foot, AC/DC Norcold Model DE0061 U-Line Ice Maker in Bar Large storage cabinet for liquor

Entertainment

Flat screen TV (salon) RCA VCR (salon) RCA TV/VCR (master stateroom) CD/AM/FM stero system 12 Maxima speakers w/conrols

Recent Service & Upgrades

Clean/polish all exterior fiberglass Clean & detail the interior New Eisenglass on all four sides Two Port & Starboard New Through-Hall Outfittings for Main Engines Fresh Bottom paint House Batteries Installed Bimini Top

Accommodations

2 Heads 2 State Rooms Mid Ship Master VIP forward Screen doors, Aft Deck sliders, Starboard Pilot House Door, Phantom roller screen to Fly Bridge Screen windows, on all Port lights on Port side window 12 volt Fans in all rooms Complete set of canvas covers for Aft Deck and Fly Bridge 4 Fenders with custom covers stored in baskets on bow Port and Starboard Glendenning shore cord with 75 feet of 50 amp shore cord. Sun canopy for Fly Bridge and Aft Deck Ghost Alarm,

high water, battery, motion, entry doors, smoke, & CO2 Additional Batteries 8 new 6 volt deep cycle house batteries Dock Lines Muir Anchor Windless with Bruce style anchor with 100 feet of chain + 250 feet of Rode Stern Anchor Fortress Aluminum FX55 Anchor with 100 ft Anchor Wash Down Fresh water hose bib for deck wash down. Custom fitted carpeting on Aft Deck and Fly Bridge Aft Deck and Fly Bridge Bose Speakers Dockside water connection Shower Aft Deck Life Sling Man Over Board Ring Throwing Line for man overboard 2 Fishing Rod holders Aft Deck Transom Step deck storage box New Izing Glass surround on Fly Bridge Stainless Steel Collapsible Swim Ladder Aft Swim Platform Large Capacity Washer and Dryer Custom Wooden Blinds in Main Salon and Pilot House Central Vacuum Air conditioning 3 16000 BTU Marine Air with 3 zone controls. Fans in all rooms on boat

Specifications

Bridge Clearance 19' Draws 4'.5" Beam 15' Length 48' Displacement 30000# Fuel Tanks Aluminum, 550 Gallon Capacity Water tank Fiber Glass 100 Gallons Waste Tank/with Pump Out, Fiber Glass 80 Gallons 2 Volvo Diesel Engine 370 HP Total 740 HP TAMD 63 P Hours 2430 Port Hours 2429 Starboard Racor Fuel filters Primary Volvo Secondary Fuel Generator Kohler 9 KW Model 920Z Hours 2900 Racor Fuel filter Bronze Perko on all thru hulls with Sea Cocks 2 Automatic/manual Electric Johnson Bilge Pumps Filtration Concepts Compact Water-maker, 400 Gallons per Day ZF Transmissions Model IRM22A-1 Reduction gears Tides Marine drip less Strong Seal with spare seal on Shaft 2- 12 volt Battery Switches for House and Engine start Battery's Battery isolator Lewco 40 amp Battery Charger Heart Interface inverter/charger 2000 watt inverter, 100Amp Charger Xantrex 1000 inverter/ battery system Monitor & Control Panel

Main Salon

Accent Rope Lighting in soffit Decretive table Lamp Storage Space behind TV Custom Sofa Bed Air Mattress, adjustable Stereo & Speakers Sharp Aquos Flat Panel TV HDTV SIZE 19 1/2 Panasonic DVD KVH3 Satellite trac vision Alpine Stereo with amplifier Volume controls, Main Salon, Pilot House, Aft Deck, Master Stateroom, Fly Bridge & VIP XM Antenna XM Radio VHF Antenna Port & Starboard Gost all System Alarm

Pilothouse

Accent Rope Lighting in soffit Sun Screens for Pilot House windows outside Interior sunbrella window covers decorative Dinette/ Settee, Large wrap Seating area Ship Electrical Control panel with 120/240 Volt Breakers & 12 volt Breaker for Ship service Generator Controls Xentrex Control for inverter/Charger & house batteries Pilot Chair Access to flying Bridge thru sliding glass door with Phantom Screen Sub Panel for Pilot House & Flying Bridge electronics Tank Level Monitors, Holding tank, & Water R21XX Raytheon Radar 4 KW 32 Mile Range Raymarine Tri Data, Speed, Depth, Log, Temp. Garmin 3210 Chart Plotter GPS Garmin

Network HD 24 mile Radar Furuno NavPilot Autopilot 3 windshield wiper controls
 Anchor Windless control for a Muir chain windless Guest Remote controlled Spotlight. Bennett
 Trim Tab controls Glendenning Synchronizer Control Richie Compass 4 inch with night light
 Wesmar Bow & Stern Thruster controls Raytheon VHF 25 Watt Full Engine Gauges with Hour
 Meters 12 volt outlet. Airhorn control

Companion Way to Master & VIP

- Large Hanging Locker with Storage for Central Vacuum hose & Attachment, additional shelf storage

Master Stateroom

Accent Rope lighting Sharp Aquos Flat Panel HDTV SIZE 19 1/2 Storage behind hinged Flat
 Panel Sharp TV 6 Large roll out Drawer under bed 2 Drawers Next to berth "Built in Night stand"
 Stereo with switching for whole house sound or separate Storage under Mattress 4
 Cedar lined hanging Lockers & storage lockers Custom Handcraft Queen size Mattress w/ hinge
 for easy access Reading Lamps on either side of bed Candelupi 12 volt bulkhead
 mounted reading Lamps 2 Hanging Lockers

Master Head

Glass Enclosed Stall Shower Full length Mirror on door Mirrored Over-head Sliding Mirrored
 Cabinet Under Sink Storage Cabinet Additional storage cabinet Vacu Flush Head

VIP

Stereo Speakers with volume Control Custom Handcraft Queen size Mattress / hinged Large
 Hanging Locker Cedar Lined Storage locker under Hanging Locker 3 Drawers + large storage
 cabinet 2 Overhead storage lockers with Doors Drawer storage under bed Stall Shower with
 Glass Door Vacu Flush Head Mirrored overhead 12 volt custom Light Bar Storage behind
 Sliding Mirrors Under sink Storage Vertical Storage Cabinet

Flybridge

Instrument Panel Volvo Epirb Stereo Speakers w/ volume control Garmin 3210
 GPS/Radar/Chart plotter Furuno NavPilot TriData Speed, Depth, Log & Temp
 Glendenning Synchronizer Control HighNautic Controls Icom M422 VHF with DCS 25 Watt
 Bennett Trim Tab Control Guest Spot Light Control Richie 4 inch Compass Rudder Angle
 indicator Bow & Stern Thruster Joy Stick controls Port & Starboard Seating with Storage Bimini

Top Custom Izing glass enclosure with U Zip roll-ups Forward, Aft, Port & Starboard with covers to protect EisenGlass, Aft Roll up Man Door Radar Arch Lighting Bose Stereo Speakers with Volume Control Custom Edison steering wheel Knob

Boat Deck

Dinghy 340 West Marine Avon, tiller steer new e-tech outboard Davit-800 lb Brower Custom Retention Straps to secure dinghy Full Dinghy Cover

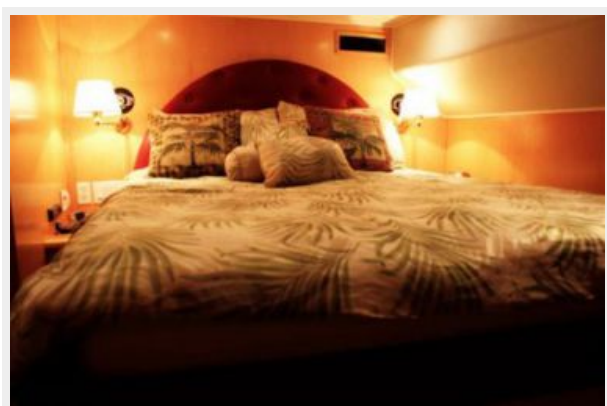
Исключения

При продаже яхты исключаются личные вещи владельца.

Отказ от ответственности

Компания предоставляет описание судна или яхты добросовестно, но не может гарантировать точность этой информации, а также не ручается за техническое состояние. Покупатель должен проинструктировать своих агентов или оценщиков исследовать представленную информацию более подробно, по собственному желанию. Продажа судна или яхты, изменение цены или снятие с продажи будет происходить без предварительного уведомления.

ФОТОГРАФИИ



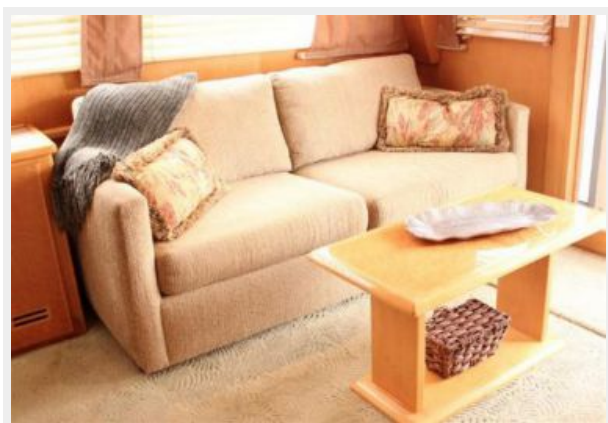


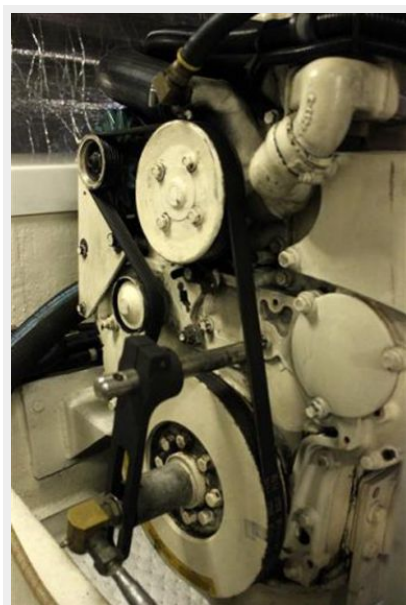


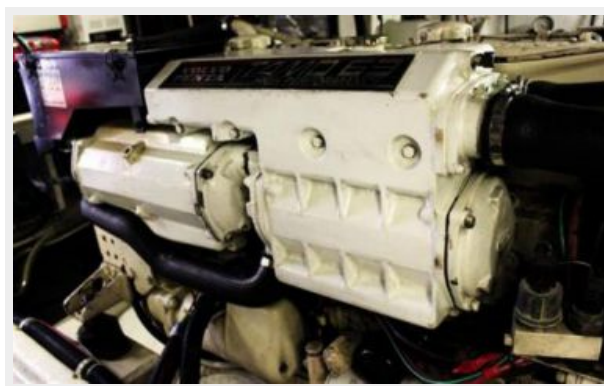


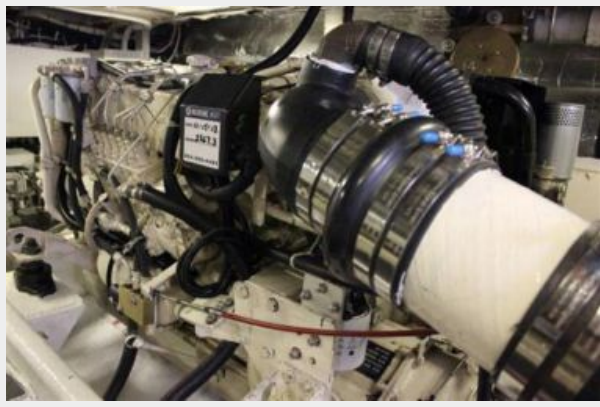












КОНТАКТЫ

Андрей Шестаков (Andrey Shestakov) – ведущий яхтенный брокер отдела продаж яхт и судов компании Shestakov Yacht Sales Inc. Официальный представитель Shestakov Yacht Sales Inc. для русскоговорящих клиентов в центральном офисе компании в Майами/Форт Лодердейл/Флорида/США.

Контактная информация

Email: andrey@shestakovyachtsales.com

Web: shestakovyachtsales.com

Телефоны

Краснодарский край: **+7(918)465-66-44**

США, Майами, Флорида: **+1(954)274-4435**

Время работы

Понедельник – Суббота: **9:00 - 21:00**
EDT

Воскресенье: **Закрито**

Адрес



Harbour Towne Marina, 850 NE 3rd St,
STE 213, Dania, FL 33004