

DISCOVERY — COMPASS



Судостроитель: COMPASS

Длина общая: 57' 0" (17.37m)

Год постройки: 2001

Модель: Моторная яхта

Цена: **ЦЕНА ЯХТЫ ПО ЗАПРОСУ**

Местонахождение: United States

Купить **Discovery — COMPASS** а также выбрать подходящую вам яхту из нашего каталога яхт вам поможет опытный яхтенный брокер Андрей Шестаков. На сегодняшний день компания **Shestakov Yacht Sales Inc.** имеет большое количество яхт в собственном списке продаж, а также тесно сотрудничает со всеми крупными яхтенными производителями по всему миру.

Для того чтобы купить яхту **Discovery — COMPASS** а также проконсультироваться по любому вопросу связанному с покупкой, продажей, чартером яхт позвоните по телефону **+7(918)465-66-44**.

ОГЛАВЛЕНИЕ

ОГЛАВЛЕНИЕ	2
ХАРАКТЕРИСТИКИ	3
Обзор	3
Основная информация	3
Размеры	3
Размещение	3
Корпус и палуба	3
Информация о двигателе	3
ПОДРОБНОЕ ОПИСАНИЕ	4
Specifications	4
Исключения	7
Отказ от ответственности	7
ФОТОГРАФИИ	8
КОНТАКТЫ	14
Контактная информация	14
Телефоны	14
Время работы	14
Адрес	14

ХАРАКТЕРИСТИКИ

Обзор

Introducing "DISCOVERY" a Three Stateroom, Two Head, Raised Pilothouse Motor Yacht.

Основная информация

Тип судна: Моторная яхта

Модельный год: 2001

Год постройки: 2001

Страна: United States

Размеры

Длина общая: 57' 0" (17.37m)

Размещение

Всего кают: 3

Всего ком. состава: 2

Корпус и палуба

Материал корпуса: Fiberglass

Информация о двигателе

Двигатели: 2

Производитель: Caterpillar

Модель: 3126 TA

Тип топлива: Diesel

ПОДРОБНОЕ ОПИСАНИЕ

Specifications

Measurements Cruising Speed: 15 kn Max Speed: 17 kn LOA: 58 ft LWL: 48 ft 8 in Beam 16 ft Max Bridge Clearance: 18 ft 11in Max Draft: 4 ft 6 in Displacement: 51000 lb Fuel Tanks: 2 Fuel Tanks Capacity: 600 Gal (300 gal each) Fresh Water Tanks: 2 Fresh water Capacity: 300 Gal (150 gal each)

Accommodations "DISCOVERY" accommodations include 3 staterooms, 2 heads, a large open salon and pilothouse that includes a gourmet galley. All of which is wrapped in beautiful American Cherry.

You board the "DISCOVERY" via either of 2 transom doors into a comfortable covered aft deck that is fitted with a built-in settee. Moving forward you enter the main salon through a glass/stainless steel sliding door. The salon design is open and flows nicely into the pilothouse to create an inviting and very livable space. Salon features include designer furnishings (settee & 2 barrel accent chairs & hi-lo table), large windows, 27" Samsung HDTV, a Sony Blu-ray HD DVD/CD player, Sony stereo system, Dish TV receiver, designer curtains, halogen and indirect lighting. Forward of the salon is the pilothouse and galley. The U-shaped galley is equipped with quality GE appliances and Corian countertops. It also features to starboard a dining settee. Forward center of the pilothouse is the lower helm station. This helm is equipped with RayMarine & Raytheon navigational equipment. Also there are port & starboard deck access doors with Phantom screens as well as an floating stairway leading up to the flybridge and curved stairs down to the staterooms.

The OWNER'S STATEROOM is located mid-ships below the pilothouse and features a queen island bed, large hanging locker, abundant drawer storage, a starboard side desk /vanity, custom lighting and an ENSUITE HEAD with Corian countertops, teak & holly floor, Vac-U-Flush toilet and a stall shower. Forward and to starboard is the GUEST STATEROOM which offers twin bunk beds, hanging locker, drawer storage and stereo system. Across from the guest cabin is the guest/VIP head. The GUEST/VIP HEAD has teak & holly floor, Vac-U-Flush toilet, Corian countertop and a generous stall shower. This head can be accessed from either the hallway or from the VIP stateroom. The VIP STATEROOM is beautifully appointed with Cherry cabinetry w/maple burl wood accents, island bed, hanging lockers & drawer storage, stereo system and skylight. There is also a Splendide combination washer/dryer located between the owners stateroom and the guest stateroom.

Salon L-Shaped leather sofa (2) Upholstered Barrel Chairs (1) Wood Frame Upholstered chair (2) Cherry wood tables with lamp Custom window curtains Cherry hi-lo table with Maple Burl Top Halogen & Indirect lighting Salon entertainment system: 27" Samsung HDTV- Sony Bluray HD DVD/CD player-Sony stereo Dish TV Receiver Beautiful handcrafted cherry furniture and cabinetry

Pilothouse Center positioned helm station L-shaped settee Port & Stbd access doors with phantom screens Hi-Lo drop-leaf table Stairway to the flybridge Teak & holly sole Marine Air windshield defrosting system U-shaped galley Satellite TV Control **Owner's Stateroom** Queen island bed with upholstered headboard and mirror detail Large cedar lined hanging locker Abundant cabinet storage(8) storage drawers Halogen & Indirect lighting Ensuite desk/vanity Entertainment center: Sony 23" Samsung HDTV, Sony DVD Player, Sony stereo Dish TV Receiver Intercom Ensuite head Portlights with screens **Owner's Ensuite Head** Teak & Holly sole Vac-U-flush toilet Cherry cabinet with Corian countertop Porcelain wash basin Stall shower Portlight with screen

Guest Cabin Twin Bunks Cedar lined hanging locker Stainless reading lights Halogen lighting Stereo system Intercom Drawer storage Skylight

VIP Stateroom Queen island berth Drawer storage Hanging locker Halogen & Indirect lighting Stereo system Intercom Reading lights Skylight Ensuite access to the guest head Portlights with screens

Guest Head Teak & Holly sole Vac-U-flush toilet Cherry vanity Granite countertop Porcelain wash basin Stall shower Skylight Portlight with screen

Miscellaneous Equipment Splendide Combination Washer/Dryer Central Vacuum system Webasto hydronic diesel heating system Spectra water maker Broan Trash Compactor in Cockpit

Galley The U-shaped galley is located on the port aft side of the pilothouse. It offers Corian countertops with plenty of overhead & under counter storage as well as generous food preparation space. GE 18 cu. ft. refrigerator w/freezer The refrigerator door is clad in cherry wood GE 4 burner ceramic cooktop Lazy Susan (dual racks) storage Drawer storage Corian countertops GE Profile Performance Conv. Microwave Dinette with Cherry table Overhead & under-counter storage cabinets Double S.S. sink Stbd side storage cabinet with Corian top Teak & Holly sole Halogen task lighting

Electronics Both helm stations on "DISCOVERY" were designed to give the helmsman great visibility & comfortable access to the yachts navigational equipment. (2) Raymarine E120 multi-function LCD color displays - new 2010 Raymarine 4' open array radar antenna - new 2010 Radar - Chart plotter - Depth sounder - new 2010 Raymarine Pathfinder ST7000+ autopilot ST600R autopilot remote (2) Danforth Constellation compasses Fireboy fire system remote control Bow & Stern thruster control Raymarine 300 GPS Plotter Raymarine Raystar 125 GPS Raymarine DSM300 depth sounder module w/bronze transducer (2) Ray220 VHF radios (2) Ray ST60 Tridata (Depth-Speed-Temp) displays with repeaters in the owners stateroom & flybridge (2) VDO rudder indicator ITT Jabsco searchlight with (2) remote controls PC Navigation Interface Fully integrated route tracking using Raymarine or PC **Electrical** AC Power is provided from 3 sources. Shore-power via a Glendinning 250/125V/50A cable master system with 75' cable; Northern Lights 12kW diesel generator with sound shield and air/water separator exhaust system; Freedom Marine 3.0kW Inverter. 12kW Northern Lights generator w/sound shield Phase

Three PT-25W 3 stage battery charger
 Battery Isolators 12V House & Engine start batteries, 6-8D
 24V Bow & Stern Thruster & Windlass batteries, 2-8D (series)
 Generator battery: Optima gel battery
 20 gallon hot water heater
 (7) station intercom system (staterooms, PH, FB, Salon & Engine room)
 Freedom Marine 30 3.0KW inverter/140A Charger
 Protech-4 4 stage 24V battery charger
 Heart Echo charger 12/24V/15A
 Glendinning 250/125V/50A Cablemaster system with 75' cable
 Nutone central vacuum system
 KVH TracVision M5 Satellite receiver- New 2010
 The AC & DC electrical circuitry are protected by breakers located at the main electrical panel in the pilothouse.

Engines Twin Caterpillar 3126TA 420HP diesel engines
 Engine Hours: 1160 **Mechanical**
 "DISCOVERY" is powered by twin Caterpillar 3126TA 420HP diesels with Twin Disc transmissions and Twin Disc EC200 electric engine controls. She is also equipped with Bow & Stern thrusters and a Spectra water maker.

Twin Caterpillar 3126TA 420HP (313kW) diesels w/ 1160 hours each
 Twin Disc MG5061 2.0-1 ratio transmissions
 Twin Disc EC200 electronic engine controls at pilot house and flybridge
 Twin Disc remote cockpit helm control
 Propellers: 3B x 2.75" x 20.5" Bronze
 Airsep engine filtration filters
 Reverso oil change system
 Spectra water maker w/ plankton filter, 50/20/5 micron filters & charcoal filter
 AC & DC engine room task lighting
 Fireboy FE241 Halon fire system
 Engine Block Heaters
 Engine room DC & AC air ventilation fans
 Bow & Stern thrusters
 Nautical Structures 1000 lb davit
 Hynautic trim tab system
 Webasto hydronic diesel heating system
 (4) automatic bilge pumps
 Hynautic hydraulic steering system
 Racor 75/900FGX crossover fuel filters w/ vac gauge
 Racor 75/500 crossover for the NL generator
 Water System: (2) Paragon 12V water pumps - 40 & 50 psi
 Fresh water spigot in engine room
 Nutone vacuum system

The engine room is in bristle condition and offers easy access to all of the machinery housed in this space. The sound insulation with its aluminum exterior finish, combined with the AC & DC lighting creates a bright and light engine room.

Tanks Fuel: 600 gals, (2) 300 gallon aluminum tanks
 Fresh Water: 300 gals, (2) 150 gallon stainless steel tanks
 The fuel and water tanks on "DISCOVERY" are installed athwartships which allows the tanks to be filled from either the port or starboard sides of the vessel. There are a 1.5" cross flow connection hoses that allows the fuel and water tanks to fill evenly.

The fuel tanks are coupled to dual Racor fuel filters to ensure clean fuel is delivered to the main engines and the generator.

Deck As with all Compass Yachts the exteriors were designed to offer the maximum in comfort and livable space. The covered aft deck offers teak decking, a large settee and dual transom doors leading to the swim step. The bridge deck offers a port side helm station with a double width helm seat, a large L-shaped cruising/dining settee with table and a food center that features a BBQ, S.S. sink w/hot/cold water and a U-line refrigerator w/icemaker. Also on the bridge deck is a Nautical Structures davit and Avon 320DL tender. A new KVH TracVision M5 satellite TV receiver was installed in 2010. **Aft Deck**
 Covered aft deck
 Halon lighting
 Courtesy deck lights
 Settee w/ Ultraleather cushions & accent pillows
 Dual transom doors
 Teak decking on aft

deck & swim stepS.S. safety-staples on swim stepS.S. Teak ladder to bridge deckStorage cabinet & engine room accessPort side engine control stationTransom hot/cold showerFresh water deck wash-down systemEmergency Bilge Pump**Sunbrella Canvas**Bimini top with cover bootF/B helm stationF/B helm seatF/B L-setteeP/H windshield (mesh)P/H port & starboard side doors (mesh)Cockpit setteeTender cover

Bridge Deck Portside helm stationL-shaped settee w/ tableFood center w/ BBQ, sink and refrigerator with icemakerFolding Bimini top Nautical Structures 1000 lb davitAvon 320 DL tender w/a 25 HP Tohatsu with power tilt & trimBlack Sunbrella tender cover

Foredeck Maxwell windlass with 3 control stations60 lb plow type stainless steel anchor290' 3/8" galv. chain316L S.S. bow pulpit safety railingFresh water deck wash-down

Comments"DISCOVERY" is a great cruising yacht with a well-designed deck arrangement, beautiful cherry hardwood interior and it is equipped for extended cruising. Lake Union covered moorage in a 65' slip is available to the purchaser of "DISCOVERY."

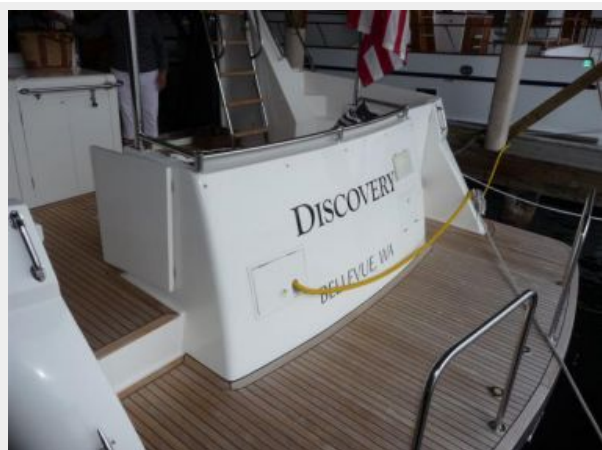
Исключения

При продаже яхты исключаются личные вещи владельца.

Отказ от ответственности

Компания предоставляет описание судна или яхты добросовестно, но не может гарантировать точность этой информации, а также не ручается за техническое состояние. Покупатель должен проинструктировать своих агентов или оценщиков исследовать представленную информацию более подробно, по собственному желанию. Продажа судна или яхты, изменение цены или снятие с продажи будет происходить без предварительного уведомления.

ФОТОГРАФИИ

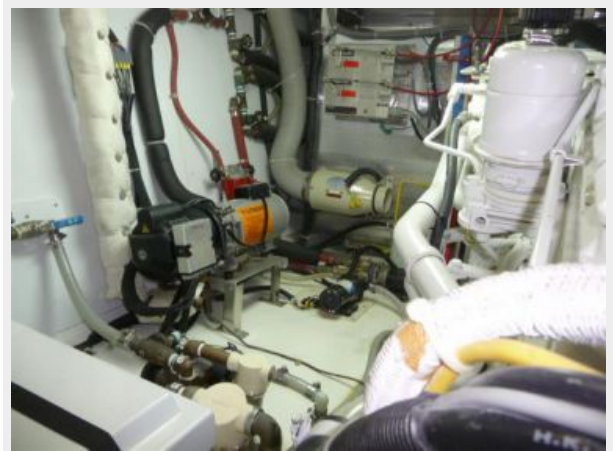












КОНТАКТЫ

Андрей Шестаков (Andrey Shestakov) – ведущий яхтенный брокер отдела продаж яхт и судов компании Shestakov Yacht Sales Inc. Официальный представитель Shestakov Yacht Sales Inc. для русскоговорящих клиентов в центральном офисе компании в Майами/Форт Лодердейл/Флорида/США.

Контактная информация

Email: andrey@shestakovyachtsales.com

Web: shestakovyachtsales.com

Телефоны

Краснодарский край: **+7(918)465-66-44**

США, Майами, Флорида: **+1(954)274-4435**

Время работы

Понедельник – Суббота: **9:00 - 21:00**
EDT

Воскресенье: **Закрито**

Адрес



Harbour Towne Marina, 850 NE 3rd St,
STE 213, Dania, FL 33004