

AVANTE — AZIMUT



Builder: [AZIMUT](#)

Year Built: 1997

Model: Motor Yacht

Price: PRICE ON APPLICATION

Location: United States

LOA: 100' 0" (30.48m)

Beam: 21' 7" (6.58m)

Max Draft: 6' 5" (1.96m)

Cruise Speed: 22 Kts. (25 MPH)

Max Speed: 28 Kts. (32 MPH)

Our experienced yacht broker, Andrey Shestakov, will help you choose and buy a yacht that best suits your needs **Avante — AZIMUT** from our catalogue. Presently, at Shestakov Yacht Sales Inc., we have a wide variety of yachts available on our sale's list. We also work in close contact with all the big yacht manufacturers from all over the world.

If you would like to buy a yacht **Avante — AZIMUT** or would like help answering any questions concerning purchasing, selling or chartering a yacht, please call **+1(954)274-4435**

TABLE OF CONTENTS

TABLE OF CONTENTS	2
SPECIFICATIONS	4
Overview	4
Basic Information	4
Dimensions	4
Speed, Capacities and Weight	4
Accommodations	5
Hull and Deck Information	5
Engine Information	5
DETAILED INFORMATION	6
Accommodations	6
Salon	6
Galley/Laundry	6
Master Stateroom	6
VIP Stateroom	6
Guest Staterooms	7
Crew Quarters	7
Fly Bridge	7
Mechanical	7
Electronics	8
Audio & Visual Equipment	8
Garage	8
Exclusions	8
Disclaimer	8
PHOTOS	9
CONTACTS	19
Contact details	19
Telephones	19

Office hours 19

Address 19

SPECIFICATIONS

Overview

The Azimut 100 Jumbo motor yacht 'Avante' was built by Azimut in Italy at their Viareggio shipyard, she was delivered to her owner in 1997 and last refitted in 2006. This luxury vessel's sophisticated exterior design and engineering are the work of Stefano Righini. The yacht's interior has been designed by Carlo Galeazzi.

Basic Information

Category: Motor Yacht

Model Year: 1997

Year Built: 1997

Country: United States

Vessel Top: Radar Arch and Bimini

Fly Bridge: Yes

Dimensions

LOA: 100' 0" (30.48m)

Beam: 21' 7" (6.58m)

Max Draft: 6' 5" (1.96m)

Speed, Capacities and Weight

Cruise Speed: 22 Kts. (25 MPH)

Max Speed: 28 Kts. (32 MPH)

Gross Tonnage: 100 Pounds

Water Capacity: 529 Gallons

Holding Tank: 415 Gallons

Fuel Capacity: 3646 Gallons

Accommodations

Total Cabins: 4

Sleeps: 8

Total Heads: 4

Crew Cabin: 2

Crew Sleeps: 4

Hull and Deck Information

Hull Material: Fiberglass

Hull Configuration: Semi-Displacement

Exterior Designer: Stefano Righini

Interior Designer: Carlo Galeazzi

Engine Information

Engines: 2

Manufacturer: MTU

Model: 16V2000M90

Engine Type: Inboard

Fuel Type: Diesel

DETAILED INFORMATION

Accommodations

Avante's interior configuration has been designed to comfortably accommodate up to 8 guests overnight in 4 cabins comprising a master suite, 1 VIP stateroom, 2 twin cabins and 2 pullman beds. She is also capable of carrying up to 4 crew onboard in 2 cabins to ensure a relaxed luxury yacht experience.

Salon

The interior has the standard layout with spacious salon and plentiful seating to both port and starboard. The LCD TV with stereo system is aft to starboard and the bar area complete with ice-maker and custom refrigerated cabinet is aft to port. There are numerous storage lockers outboard to port and starboard and large curved doors are aft. The day head is forward to port and the walk through is forward to starboard. The formal dining table with ten chairs is forward center line of the salon. • Main bar w/glassware • (2) sofas seating 10 people • 1 central square coffee table • 1 oval table for 10 people • 1 Half bathroom • 1 Plasma TV 36" • 1 CD player stereo radio AM/FM • (3) luxury mirrors • (2) furniture pieces with silver and glass • 1 copula w/lights and a mirror at the ceiling Study: The study is forward of the salon with a large couch aft and the entertainment equipment forward.

Galley/Laundry

The galley is forward of the study area . • Table for 6 persons • GE 4 burner stove and oven • Microwave oven GE XLI800 • (2) sinks • Refrigerator/freezer with 4 doors, the two at the top are refrigerated and the two at the bottom are freezers • 1 extra refrigerator • Dishwasher • Icemaker
Laundry Equipment: • Stackable (Upper washer, lower dryer)

Master Stateroom

• Plasma TV 36" • CD player • En suite head • (2) sinks with large mirrors • Queen size bed with drawers at the base • Dressing room • Closet • (2) sofas • Minibar • (2) skylights

VIP Stateroom

• Plasma TV 24 " • CD player • Queen size bed with drawers at the base, lights at the bottom and mirrors at the headboard. • En Suite with marble top, 4 drawers • Skylight • Dressing room • Closet • Sofa • Storage drawers

Guest Staterooms

Port Stateroom: • TV 24" • (2) twin beds with a nightstand between them, which has 3 drawers • Pullman berth • En suite • CD player • Sink and vanity with 4 storage compartments below • Closet • Large mirror over the sink
 Stern Stateroom: • TV 24" • (2) twin beds with a nightstand between them, which has 3 drawers. • Pullman berth • En suite • CD player • Sink and vanity with 4 storage compartments below • Closet • Large mirror over the sink

Crew Quarters

There is a center line stairway that leads down to the crew area where there are two cabins with twin single berths and a head. There is an emergency hatch from the lower center line hallway up to the fore deck. Port Crew Cabin: • En suite • (2) berths with storage drawers beneath • Closet • Air Conditioner • Reading lamps
 Stern Crew Cabin: • Half bathroom • (2) berths with storage drawers beneath • Closet • Air conditioner • Reading lamps

Fly Bridge

The fly-bridge is accessed from either the aft deck or from the pilothouse. The helm is forward to port. There is a large seating area opposite to starboard and a second larger seating area aft. The BBQ, sink and refrigerated chest are in a console aft of the helm seating. The jet tub is aft of the seating and the two life rafts are aft to port & starboard. Inboard of the port life raft is a large refrigerator/freezer chest. Opposite to starboard is a freezer chest. There is a large Bimini top stretching from the aft mounted radar arch forward to the helm seat. • Jacuzzi • Helm station with navigation equipment and security system • Small table for 3 people • Table with easy chairs for 10 people • Drawers • Refrigerator • Grill • (21) life jackets for adults and (11) for children • (2) extra life jackets with the name of the yacht • Mattress to sunbathe • Rods • CD player

Mechanical

Main Engines: Engine Type: MTU 16V2000TE90 Horsepower: 1800HP/2300 RPM Gearboxes for Main Engines: ZFBW255VP Drive: V-Drive (reduction 2.5:1) **Generators & Electricity:** 24VDC (transformers 24VDCT012VDC) Output: VAC 55KW (220VAC) 3PHS 60HZ Generators: 2 Kohler 55 Kw Shore Power: Atlas energy system (100 AMPS) 48KW 3PHS, 96006 SPCL35KX6X3-XL-SB Batteries: battery bank (24VDC Trojan) 720 Ah **Air Conditioning:** Type: Cruisair (chilled water system) 1440B0 BTU (twin compressors) **Other machinery:** Water makers: Sea Recovery: SRCAW900-1 (Aqua Whisper Series) 920 gallons per hour, approx. 3600 liters per day Bow Thruster: Type BP-003 (Bow-propeller BSC) 35HP Steering System: BCS electro-hydraulic system Fuel Separator and Filtration: Engines (6 units Racor 1000s); Gen sets (2 units Racor 500s) Sewage System: Integrated macerator each unit Boilers: 2 boilers 250 Lts/66 gallons; 1 boiler 50 Lts/13 gallons Fire/Bilge Pump: 6 bilge pumps/1 fire pump. 200 Lts/min Other: NAIAD marine stabilizer (roll stabilizers) Trim Tabs: Maritime Hydraulic

Electronics

Communications: Telephone System: Internal Telephone Communications/Telephone VHF: Standard Marine VHF bidirectional, SSB Model FS-5000 **Navigation Systems:** (1) Radar Furuno in pilot house (1) Radar Furuno - upper deck Gyrocompass: Anschutz Magnetic Compass: Cassen 8 plath Ok/two instruments Automatic Pilot: Anschutz in pilot house and Furuno FAP-330(two station) GPS: Furuno nav set system/Furuno GP-37/Furuno & GP-7000F/FurunoGP-30 Navigation Instruments: Navnet system/ rudder angle indicators/ wind speed /Indicator/ chart plotter in pc/ depth sounders integrates in GPS systems

Audio & Visual Equipment

Salon: • Sony Bravia Plasma T.V. Screen (full HD 1080) • Dolby System stereo BOSE speakers • Sony Digital audio/video control center • Sony CD/DVD player • Satellite T.V. **TV Salon:** • Panasonic Plasma T. V. Screen TH37PWS • Panasonic CD/DVD player and recorder • Sony VHS player • Satellite T.V. All the main staterooms are equipped with flat screen TV, CD/DVD player. The VIP stateroom has Satellite T.V. (All the main staterooms have internal telephone.)

Garage

This area is accessed from either the aft deck or by opening the large aft transom door and was found clean and neat. There is a large custom frame on the center line for lowering and retrieving a dinghy. There is still plenty of space to port and starboard in which the shore transformers, hydraulic power pack, water heater, and fixed fire fighting bottle are installed.

Exclusions

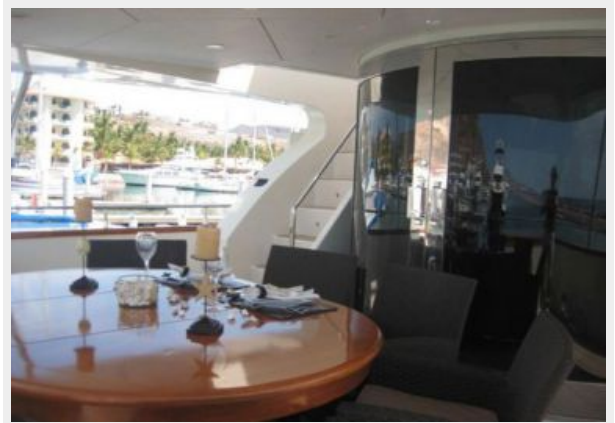
Owner's personal belongings.

Disclaimer

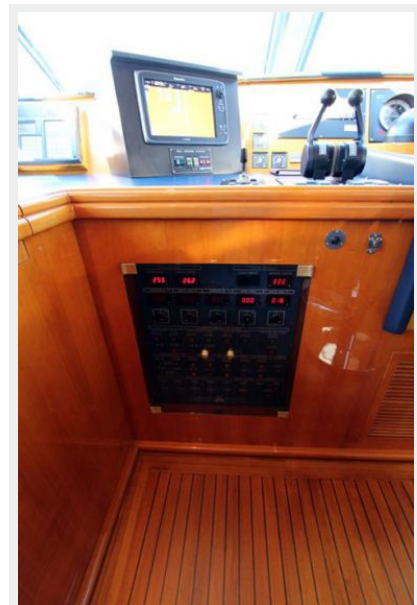
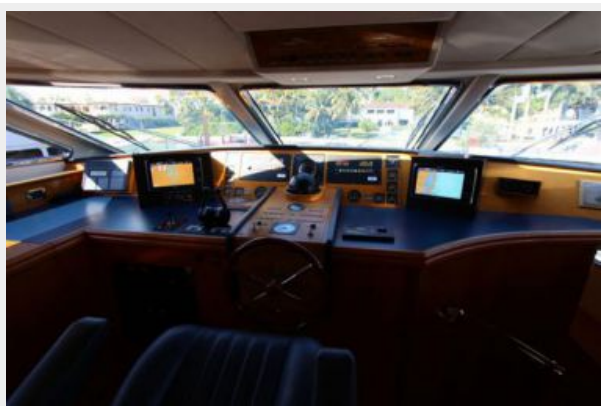
The Company offers the details of this vessel or yacht in good faith but cannot guarantee or warrant the accuracy of this information nor warrant the condition of the vessel. A buyer should instruct his representatives, agents, or his surveyors, to investigate such details as the buyer desires validated. This vessel or yacht is offered subject to prior sale, price change, or withdrawal without notice.

PHOTOS

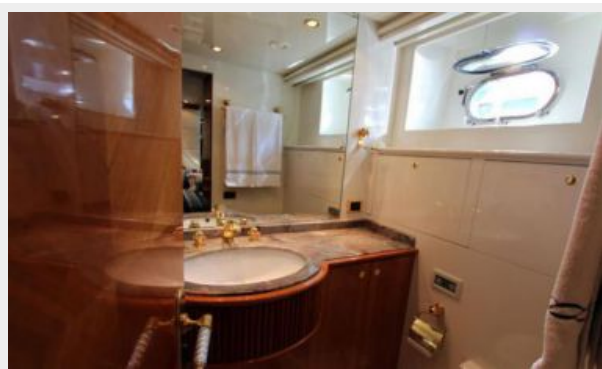
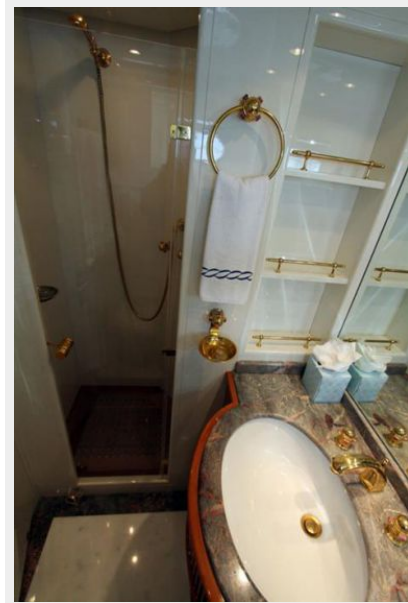




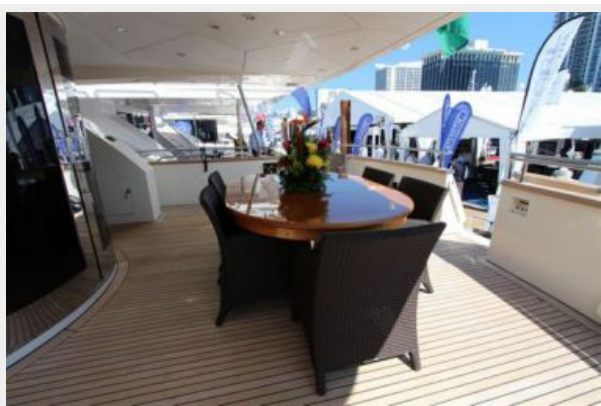


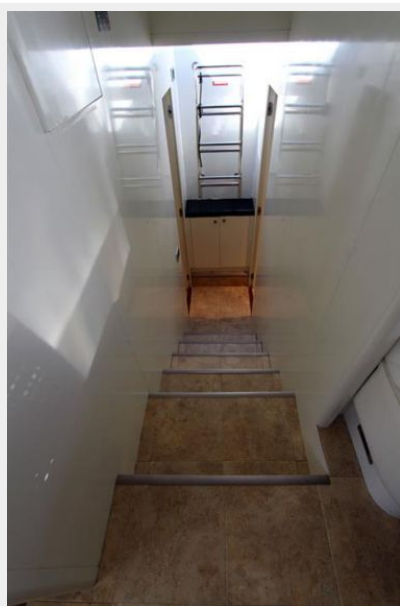














CONTACTS

Andrey Shestakov, leading yacht broker of the sales department of Shestakov Yacht Sales Inc. Shestakov Yacht Sales Inc., the official representative of the Miami/Fort Lauderdale FL headquarters.

Contact details

Email: andrey@shestakovyachtsales.com

Web: shestakovyachtsales.com/en/

Telephones

USA: +1(954)274-4435

Office hours

Monday – Saturday: **9:00 - 21:00** EDT

Sunday: **closed**

Address



Harbour Towne Marina, 850 NE 3rd St,
STE 213, Dania, FL 33004