

UNFORGETTABLE — LUHRS



Builder: LUHRS

Year Built: 2001

Model: Sport Fisherman

Price: PRICE ON APPLICATION

Location: United States

LOA: 34' 0" (10.36m)

Beam: 13' 8" (4.17m)

Cruise Speed: 24 Kts. (28 MPH)

Max Speed: 30 Kts. (35 MPH)

Our experienced yacht broker, Andrey Shestakov, will help you choose and buy a yacht that best suits your needs **Unforgettable — LUHRS** from our catalogue. Presently, at Shestakov Yacht Sales Inc., we have a wide variety of yachts available on our sale's list. We also work in close contact with all the big yacht manufacturers from all over the world.

If you would like to buy a yacht **Unforgettable — LUHRS** or would like help answering any questions concerning purchasing, selling or chartering a yacht, please call **+1(954)274-4435**

TABLE OF CONTENTS

TABLE OF CONTENTS	2
SPECIFICATIONS	4
Overview	4
Basic Information	4
Dimensions	4
Speed, Capacities and Weight	4
Accommodations	4
Hull and Deck Information	4
Engine Information	5
DETAILED INFORMATION	6
Introduction	6
Galley	6
Deck Equipment	7
Navigation	7
Mechanical & Electrical	7
Exclusions	8
Disclaimer	8
PHOTOS	9
Helm	9
Helm	9
Helm, Aft View	9
Overhead	9
Cooktop and Refrigerator	10
Salon, Port	10
Salon, Starboard	10
Salon, TV	10
Bow Stateroom Entertainment Center	11
Master Berth	11

Entertainment System	11
Cedar Lined Closet	11
Electrical Panel	12
Head	12
Cummins Engine	12
Generator	12
CONTACTS	13
Contact details	13
Telephones	13
Office hours	13
Address	13

SPECIFICATIONS

Overview

Basic Information

Category: Sport Fisherman	Model Year: 2001
Year Built: 2001	Country: United States
Vessel Top: 2363	Fly Bridge: Yes
Cockpit: Yes	

Dimensions

LOA: 34' 0" (10.36m)	Beam: 13' 8" (4.17m)
-----------------------------	-----------------------------

Speed, Capacities and Weight

Cruise Speed: 24 Kts. (28 MPH)	Max Speed: 30 Kts. (35 MPH)
Displacement: 18000 Pounds	Water Capacity: 100 Gallons
Holding Tank: 30 Gallons	Fuel Capacity: 300 Gallons

Accommodations

Total Cabins: 1	Total Berths: 3
Sleeps: 4	Total Heads: 1

Hull and Deck Information

Hull Material: Fiberglass

Engine Information

Engines: 2

Manufacturer: Cummins

Model: Turbo charged

Engine Type: Inboard

Fuel Type: Diesel

DETAILED INFORMATION

Introduction

This boat has been maintained to the highest standards by her very knowledgeable owner and her previous owner. Once you step on board you can tell she has been yard maintained both cosmetically as well as mechanically.

The 34 Luhrs is a very versatile, family convertible with an extremely large cockpit combined with all the amenities below for very comfortable cruising as well as blue water fishing. Equipped with twin Cummins turbo charged diesels that allows high cruising speeds and great fuel economy with 1.2nmpg. She boasts many after-market extras; VETUS BOW and STERN Thrusters, allowing the captain to easily dock anywhere in any conditions. She comes equipped with AC/HEAT, FULL 32' SAMSUNG HD TV, KVH SAT CABLE (pre-wired), DVD, and stereo system. Her salon is beautifully set up to make below comfortable and easy to maintain with ULTRA-LEATHER UPHOLSTERY. She has a rather LARGE STATEROOM for a boat of this size. The master stateroom offers a comfortable berth with more than adequate storage. She has an enclosed head with separate shower stall. On the exterior she is very clean with classic lines. The BLUE UNDERWATER LED provide a very relaxed atmosphere in the evening.

The ENGINES have been METICULOUSLY maintained with oil changed every 50-75 hours. Her one and two year service have just recently been performed with INTERCOOLERS, HEAT EXCHANGERS, and TURBO being cleaned. The valves have also been adjusted to make sure performance is at its best. She has also just received new batteries.

She seems to be a great boat whether you're looking to cruise with the family, spend a week on the islands, or do some blue water fishing. Her performance is incredible as she can cruise at 24-26 knots and be very economical. Wherever this boat is, she will get compliments and you won't find a more spacious convertible in the size range with as many features.

Galley

- (2) Stainless Steel Sinks
- Hot & Cold Pressure Water
- Corian Counter Tops
- 12v/120v Novakool refrigerator w/freezer
- 120v Raritan two burner cook top
- GE 120v turntable Microwave
- Black & Decker Spacemaker Automatic Coffee Maker
- Raritan Icer-Ette automatic Ice Maker
- Plenty of counter space and storage

Deck Equipment

- Large cooler/fish-box with drain
- Large Transom
- Live-well
- Sink w/Faucet
- Transom Steps
- Fresh Water Wash-down
- Saltwater Washdown
- 6 Rod Holders
- Blue LED LIGHTING
- 12V Lewmar Windlass
- Anchor with Chain and Scope
- Vetus Bow Thruster
- Vetus Stern Thruster
- Complete Enclosed Fly Bridge
- 11"X 24 -4 Bladed NIBRAL Propellers
- ZF 13/4 Stainless Shafts
- 11" 21" BENNETT Trim Tabs
- (3) 1000 gph bilge pumps
- (1) 4000 gph pump tied to high water alarm
- 6 Gallon Hot Water Tank
- Fiberglass Swim Platform w/ladder
- (4) OCEAN LED A12 PRO BLUE UNDERWATER LED LIGHTS **BRIDGE**
- New cushions on helm chairs and forward seating
- New Bazooka speakers

Navigation

- New Garmin GPS/Chartplotter
- 12" Furuno Navnet VX2 Display
- Furuno Digital Fish Finder
- GPS tied in to Furuno Digital Fish Finder for Sonar Capabilities
- 48 Mile Furuno Radar
- Raymarine Rudder Sensor
- Northstar 952X GPS Chartplotter
- (2) ICOM 604 VHF Radios
- ST-60 rudder indicator
- Intercom system thru VHF System
- JVC AM/FM/CD Stereo System w/ premium Infinity Speakers in and out

Mechanical & Electrical

- Generator (8 kw Kohler, model # 8EOZ) Engine driven, 1000 hrs on Meter
- Oil X-Change System
- (2) Marine Air AC/HEAT units (12,000 BTU and 7000 BTU
- Cable Receiver
- DVD Player
- Pre wired KVH Satellite Service
- 32" HD LCD TV
- 12V/250V AC/DC ELECTRICAL SYSTEM
- (3) Bank Battery System w/ (2) Rolls 8D's AGM, and (1) Group #27 for the Generator
- 30 amp Charger & AGM Battery dedicated to the Thrusters
- 30 amp Charging system
- AC/DC Circuit Breakers

Exclusions

Owner's personal belongings.

Disclaimer

The Company offers the details of this vessel or yacht in good faith but cannot guarantee or warrant the accuracy of this information nor warrant the condition of the vessel. A buyer should instruct his representatives, agents, or his surveyors, to investigate such details as the buyer desires validated. This vessel or yacht is offered subject to prior sale, price change, or withdrawal without notice.

PHOTOS

Helm



Helm



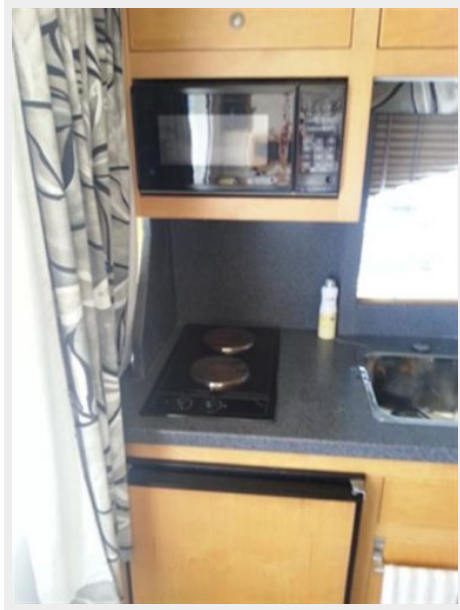
Helm, Aft View



Overhead



Cooktop and Refrigerator



Salon, Port



Salon, Starboard



Salon, TV



Bow Stateroom Entertainment Center

Master Berth



Entertainment System



Cedar Lined Closet



Electrical Panel



Head



Cummins Engine



Generator



CONTACTS

Andrey Shestakov, leading yacht broker of the sales department of Shestakov Yacht Sales Inc. Shestakov Yacht Sales Inc., the official representative of the Miami/Fort Lauderdale FL headquarters.

Contact details

Email: **andrey@shestakovyachtsales.com**

Web: shestakovyachtsales.com/en/

Telephones

USA: +1(954)274-4435

Office hours

Monday – Saturday: **9:00 - 21:00** EDT

Sunday: **closed**

Address



Harbour Towne Marina, 850 NE 3rd St,
STE 213, Dania, FL 33004