

NO NAME 82' HORIZON — HORIZON



Судостроитель: HORIZON

Год постройки: 1999

Модель: Моторная яхта

Цена: **ЦЕНА ЯХТЫ ПО ЗАПРОСУ**

Местонахождение: United States

Длина общая: 82' 0" (24.99m)

Ширина: 20' 0" (6.10m)

Мин. осадка: 6' 3" (1.91m)

Макс. осадка: 6' 9" (2.06m)

Крейс. скорость: 19 Kts. (22 MPH)

Макс. скорость: 21 Kts. (24 MPH)

Купить **NO NAME 82' HORIZON — HORIZON** а также выбрать подходящую вам яхту из нашего каталога яхт вам поможет опытный яхтенный брокер Андрей Шестаков. На сегодняшний день компания **Shestakov Yacht Sales Inc.** имеет большое количество яхт в собственном списке продаж, а также тесно сотрудничает со всеми крупными яхтенными производителями по всему миру.

Для того чтобы купить яхту **NO NAME 82' HORIZON — HORIZON** а также проконсультироваться по любому вопросу связанному с покупкой, продажей, чартером яхт позвоните по телефону **+7(918)465-66-44**.

ОГЛАВЛЕНИЕ

ОГЛАВЛЕНИЕ	2
ХАРАКТЕРИСТИКИ	5
Обзор	5
Основная информация	5
Размеры	5
Скорость, вместимость и масса	5
Размещение	6
Корпус и палуба	6
Информация о двигателе	6
ПОДРОБНОЕ ОПИСАНИЕ	7
82' Horizon Motor Yacht NO NAME	7
Salon	7
Pilothouse & Skylounge	8
Sun/Boat Deck	8
Galley & Dining	8
Day Head	9
Master Stateroom	9
Master Baths	9
VIP Stateroom, Below Deck Forward	10
VIP Bath	10
Port Guest Stateroom	10
Guest Bath	10
Laundry	10
Captains Cabin, Aft Starboard	11
Crew Cabin, Aft Port	11
Crew Utility Area	11
Crew Bath	11
Electronics & Navigation	11

Main Deck	12
Boat Deck	12
Aft Deck	12
Foredeck	12
Deck & Hull	13
Engine & Mechanical Equipment	13
Electrical Equipment	13
Remarks	14
Exclusions	14
Исключения	14
Отказ от ответственности	14
ФОТОГРАФИИ	15
Aft Deck	15
Foredeck	15
Main Salon	15
Salon	15
Master Head 2	15
Master	15
VIP	16
Crew Lounge	16
Galley	16
Galley	16
Skyounge	16
Forward Dinette	16
Skyounge	17
Pilothouse	17
Pilothouse	17
Engine Room	17
КОНТАКТЫ	18

Контактная информация	18
Телефоны	18
Время работы	18
Адрес	18

ХАРАКТЕРИСТИКИ

Обзор

Full Paint Job Completed by Bradford Marine in November 2015

Основная информация

Тип судна: Моторная яхта

Модельный год: 2000

Год постройки: 1999

Страна: United States

Открытая палуба мостика: Да

Размеры

Длина общая: 82' 0" (24.99m)

Ширина: 20' 0" (6.10m)

Мин. осадка: 6' 3" (1.91m)

Макс. осадка: 6' 9" (2.06m)

Скорость, вместимость и масса

Крейс. скорость: 19 Kts. (22 MPH)

Крейсерская скорость поворота: 2150 Kts.

Макс. скорость: 21 Kts. (24 MPH)

Макс. скорость поворота: 2300 Kts.

Водоизмещение: 150000 Pounds

Вместимость воды: 420 Gallons

Вместимость сточного бака: 100 Gallons Объем топливного бака: 2250 Gallons

Размещение

Всего кают: 3

Всего коек: 4

Спальные места: 6

Всего ком. состава: 4

Каюта капитана: Да

Каюты экипажа: 2

Койки экипажа: 3

Спальных мест экипажа: 4

Комм. состав экипажа: 1

Корпус и палуба

Материал корпуса: Fiberglass

Информация о двигателе

Двигатели: 2

Производитель: Caterpillar

Модель: 3412

Тип двигателя: Inboard

Тип топлива: Diesel

ПОДРОБНОЕ ОПИСАНИЕ

82' Horizon Motor Yacht NO NAME

This listing was updated October, 2015. 82' Horizon Motor Yacht NO NAME was just COMPLETELY REPAINTED by Bradford Marine, Fort Lauderdale yard, utilizing an AWLGRIP paint system. The teak handrails have been stripped and completely revarnished, and all exterior caulking has been replaced. The work was completed October 2015. There are 3 spacious double owner and guest ensuite staterooms that include 4 heads with 3 showers and additionally, an ondeck powder room. The owner suite has 'his and hers' baths. Aft below the main deck and aft are the crew accommodations that include a captain's cabin with a double berth, a 2 berth cabin, separate head and shower and the engine room access. This is a highly customized well thought out yacht ready for the most discerning yachtsman. Her comfortable flowing expansive living areas, systems, electronics, machinery and design make this yacht highly desirable. She has been updated and upgraded and is truly outstanding. The yacht was redecorated by the current owner with high end designer fabrics, trims, lamps, window treatments and décor throughout. She is elegant in her presentation. Exterior features include an unusually expansive covered aft deck full easy access walkaround side decks with bulwarks that are nearly 2' high topped by handsome varnished teak cap rails and additionally, 2" stainless steel hand rails. Port and starboard curved stairways from the aft deck lead to the oversized swim platform. Crew access is through a pantograph hinged watertight door in the center of the transom as well as the interior stair. A very easy access, gently curved, stairway from the aft deck port side leads to the upper/boat deck with its aft sun lounge and forward to the enclosed pilothouse and sky lounge.

Salon

From the aft deck through a polished stainless steel framed glass sliding door, the salon is noticeably open and inviting. A sliding screen door provides natural ventilation. Immediately you are aware of the stunning high gloss cherry wood cabinetry with camphor burl inlays and trim, rich textured fabrics and the light taupe wall coverings. Fabrica Damask Collection, the Exotica pattern "Café Moca" carpeting and indirect halogen lighting further enhance the ambiance. The same carpeting is also found in the staterooms. To starboard aft, built into the cherry wood cabinetry is a full service wet bar. Additionally, built into the cabinetry is a ULine refrigerator with an ice maker, ULine refrigerated wine cooler, glass and china storage lockers and the entertainment center. A plasma television is on a remote controlled electric lift it disappears into the cabinetry. There is an audio component system and home theater surround sound system. A variety of lighting schemes are available creating different moods, from subtle ambiance to day bright reading lights. A unique circular light fixture built into the center of the ceiling utilizes fiber optic lights to create the illusion of a starlight night. Custom duet style shades behind cherry wood shadow box frames control privacy and light. Beautifully contoured on the port side, is a very comfortable 12' wrap around sofa surrounding an oval cherry wood cocktail table. Some of the additional features include: a large stowage areas under the sofa, carpet canvas runner,

builtin end table Majilite wall coverings, duet style shades, lamps and halogen lighting. Forward and up two steps up from the salon, is the large gourmet galley/dining area. Opposite the galley on the starboard side is the ondeck day head. Easy deck access is either from the port or starboard aircraft style doors. On the starboard side and slightly aft is the curved stairway to the pilot house and sky lounge. Further forward a starboard stair leads below to the amidships full beam master suite, VIP forward guest stateroom and port side twin guest stateroom all with ensuite heads. Aft to port in the salon, is the stair to the crew cabins, utility room and interior engine room access. There is a secondary crew quarters access from the swim platform. •NEC 42" plasma flat panel display TV monitor Yamaha DVDS675 DVD/CD player •Denon Audio Component receiver DRA395 Ceiling speakers New 2011 •Yamaha KXW321 Auto reversing double cassette Sony SLV799 hi-fi stereo VCR tape deck •Yamaha DVD/CD changer Pioneer receiver •Sony Direct TV receivers (salon, pilothouse & master stateroom) •Powered subwoofer

Pilothouse & Skylounge

Forward is the helm station and adjacent twin Stidd chairs. Aft is the Sky Lounge with a port side it the Ushapped settee upholstered in butternut color leather and adjacent is a beautifully finished high gloss table. There is storage in the table pedestal for books. To starboard built into the cabinetry is a Sony television, Sony stereo and Uline refrigerator with icemaker. Sliding windows are on either side and aft is a large stainless steel framed glass sliding door for access to the sun/boat deck, lounge and BBQ. The entire aft bulkhead is visually open to the deck area. •Built into the soffits are overhead lighting and airconditioning outlets. •Overhead hatch for additional ventilation and maintenance access to the electronics. •Beige carpet with blue highlights. •Computer desk and office Beige drapery

Sun/Boat Deck

Outside and sheltered by the Sky Lounge upper deck is a builtin bar with sink and BBQ with Miele electric grills. Aft is an Lshaped settee with a protective canvas cover. The stair to the aft deck is just outboard of the settee on the port side. There are a variety of options for relaxation, dining and entertaining, something for everyone. The davit, dinghy and other equipment are stored aft of the settee. Access is easy with space for routine equipment maintenance when necessary.

Galley & Dining

The noticeably spacious Ushaped galley is located forward of the salon on the port side. The black pattern granite countertops and backsplashes perfectly accent the cherry wood faced appliances, cherry cabinetry and a teak and holly sole. There is an abundance of storage in the cabinets and lockers. The large windows visually bring the outside in with both lighting and scenery. The very well planned galley is a noticeably open and cheerful environment in which to work. The galley is open to the forward dining area. There is a rectangular high gloss varnished

teak table that is surrounded on three sides by a comfortable leather settee with additional seating on two hideaway leather topped stools. The seating comfortably accommodates six in a "country kitchen" atmosphere. A LCD TV on a swivel bracket is mounted under the overhead galley cabinets making it visible from either the dining area or the galley. Sub Zero refrigerator w/ freezer drawers, icemaker GE profile 4-burner glass top range GE profile oven GE profile convection microwave oven with lighted vent hood Broan trash compactor GE profile dishwasher Black Granite countertops Garbage disposal Sharp LCD television on swivel bracket Teak & holly sole Custom duet style shades Stainless steel double sink Storage drawers Speakercraft speakers

Day Head

On the main deck, the day head is located on the starboard side directly across from the galley. It has a black granite floor, high gloss cherry wood, black finish VacuFlush fresh water toilet, custom duet style shades, exhaust vent system and sink with Grohe chrome fixtures.

Master Stateroom

The full beam master suite features a king size walk around bed with custom innerspring pillow top mattress. Below the bed is a large storage area. Either side of the bed is builtin burl top night stands. To starboard is a builtin burl top vanity/dressing table with mirror, stool and drawer storage. The forward corners of the room evidence the masterful joinery as the gently curved cherry wood doors are the entrees to the 'his and hers' individual full height wardrobes. Cabinetry on the forward bulkhead houses the entertainment systems. The aft bulkhead has a custom mirror in a starburst pattern with valance lighting lending to the feeling of spaciousness. On both the port and starboard sides are double stainless steel port lights. With the highly polished frames and storm covers, they add both light and a handsome nautical touch. The décor is absolutely stunning while subtle it emanates luxury, quality and elegance. The custom silk bed cover is a medium taupe and accented with throw pillows that add just the right color mix enhancing the suite's ambiance. The draperies are of the same silk as the bed cover. •Sony Wega flat screen TV and a Direct TV receiver •Sony CMTCP1 mini system w/ CD/ Cassette tape/ AM/FM tuner •Sony hi/fi stereo VCR

Master Baths

Ensuite 'his and hers' baths are located aft of the bed with separate port and starboard entry doors. Elegantly styled, they feature travertine offwhite marble floors and counters, Grohe chrome fixtures, VacuFlush fresh water toilets and high gloss cherry/camphor wood trim. The oversized spacious stall shower with marble floor separates the baths. For added lighting and a feeling of openness, on either side are polished stainless steel port lights with storm covers.

VIP Stateroom, Below Deck Forward

Located all the way forward the VIP features an easily accessible centerline queen size bed with custom innerspring pillow top mattress. A large storage area is below the bed and built-in burl top night stands are on either side. There are two hanging wardrobes, one on either side plus several storage lockers. Built-in on the aft bulkhead is a Toshiba television with DVD and a Sony AM/FM stereo with CD player. The forward bulkhead is mirrored similar to the master stateroom. On either side are two handsome polished stainless steel port lights with storm covers. For an 82' motor yacht the VIP suite is magnificent, rivaling owners' suites in much larger yachts. It is grandeur in style and amenities. The custom bed cover matches the elegant drapery in shades of taupe and eggshell white. This is truly a grand accommodation that will impress the most discriminating guest.

VIP Bath

Ensuite the VIP head is just aft on the starboard side. There is an oversize molded stall shower with bench seat VacuFlush freshwater head, Grohe chrome fixtures and travertine marble floors, counters and back splash. Behind the entry door is a large storage locker. The polished stainless steel port light adds to the well-lit and open feeling.

Port Guest Stateroom

The port guest stateroom has twin lower berths which are separated by a built-in burl top night stand with storage drawers. There is built-in storage below each berth. Storage lockers are built-in at essentially eye level and there is a wardrobe. There is a built-in Toshiba television with DVD built-in a Sony AM/FM stereo radio w/ CD player and 2 speakers. The two polished and stainless steel port lights enhance the open feeling of this stateroom. Beautifully executed the custom bed covers are in a taupe and black stripe pattern running fore and aft. The pattern cleverly adds to the feeling of space. The custom head boards blend perfectly and the drapery matches the bed covers. The chrome mini swivel overhead reading lights are both visually elegant as well as effective lighting.

Guest Bath

Ensuite, it has a spacious marble tile floor stall shower, VacuFlush fresh water head Grohe chrome fixtures travertine marble floors, counter and back splash. The polished stainless steel port light adds just the right touch of elegance and lighting.

Laundry

The owner laundry is located just forward of the master suite. Concealed behind cherry wood

cabinetry is a GE stacked clothes washer and dryer. Forward is a full height linen and general storage locker. A second laundry is located aft in the crew quarters.

Captains Cabin, Aft Starboard

The generous captain's cabin located on the starboard side features a double berth outboard with custom innerspring mattress. There is a builtin night stand with drawers, bookrack, halogen reading lights, hanging locker builtin Sharp combo TV/VCR, and Sony AM/FM stereo radio w/ CD player. The same high gloss cherry & camphor cabinetry is throughout the crew areas. The polished stainless steel port lights are a welcomed item.

Crew Cabin, Aft Port

The port side double crew cabin has upper and lower berths. There is a builtin dresser that doubles as a night stand. Two polished stainless steel port lights with storm covers enhance the cabin, offering light and ventilation. Forward is a hanging locker and storage.

Crew Utility Area

Aft of the crew's cabins on the port side is the utility/storage room with abundant cabinets builtin both over head and below. A separate Sub Zero freezer and refrigerator are aft and the second GE stacked style washer and dryer is builtin. To starboard, is a Kenyon 2 burner electric cooktop and utility sink, and more stowage. The flooring is marine blue Pirelli rubber tiles with a carpeted runner. The engine room access door is at the forward end of the companionway.

Crew Bath

Located on the starboard side forward is the crew head with vanity and mirror, marble countertop, sink, large stall shower, Grohe fixtures, VacuFlush fresh water toilet, Pirelli rubber tile flooring with a carpet runner. There is generous stowage in the vanity and mirrored front wall cabinet.

Electronics & Navigation

Garmin 4212 GPS/Plotter (new 2011/12) Robertson/Simrad AP20 Autopilot Northstar 941 XD GPS Furuno 72 mile 12kW radar KVH gyrocompass Icom M127 VHF radio Datamarine link speed & distance log (not in service) Icom M59 VHF radio (Captain's Cabin) Panasonic 3-line 8 station telephone system Nera Worldphone Mini-M SATCOM system (not in service) Dantronics D360 Omnidirectional TV antenna Raytheon hailer w/ fore & aft speakers KVH Tracvision 4 TV antenna system CAT Vision electronic engine monitor system Danforth compass CCTV monitor w/ aft deck & engine room cameras Dell computer w/ 15" LCD monitor (inoperative) Bennett trim tabs and monitors Datamarine Link digital depth sounder VDO rudder position indicator

Datamarine true & apparent wind speed indicator Motorola 3 watt cellular phone (not in service)
Interphase twinscope forward scanning depth sounder Speich windshield wiper system Furuno
Navtex (inoperative) Helm Amp gauges (not in service)

Main Deck

Integral 6' swim platform with curved teak stairways on either side to the aft deck Transom
shower Transom door Docking lights Boarding gates (2 on either side) Deck lights (2) electric
controlled searchlights Built-in fender/line storage lockers Fiberglass nonskid side, fore & upper
decks Radar arch 2 inch 316 stainless steel handrails on the main deck 1½" 316 stainless steel
stanchions Cable TV, telephone, dockside water inlet Rub rails Marine canvas covers all
cushions & windshields Marquipt boarding ladder Marquipt sea stairs w/teak handrail Windshield
shades Spreader lights

Boat Deck

Nautical Structures EZ 1500 davit with power rotation Lshaped settee w/ Sunbrella cushions 14'
Novurania 430DL tender 50 hp Yamaha 4 stroke outboard Meile dual electric grills in a custom
cabinet Inlet for Mathers remote control box Storage locker for electric barbeque grills 2 Spare 5-
blade propellers

Aft Deck

The aft deck, approximately 270 square feet in size, features seating for eight or more and is
ideal for alfresco dining or just simply lounging. Across the aft end of the deck is a lounge with a
Sunbrella cushioned seat facing the adjustable hi and lo 9' varnished teak table. There are four
Tricomfort Bubinga African red wood reclining deck chairs with green cushions. Forward to
starboard housed, in a fiberglass cabinet, is a Uline icemaker and concealed bar sink. The aft
deck furnishings are well protected with easily removable covers. There are (2) Maxwell 2200
capstans, storage lockers and Burmese teak decking. Port side is the very easy access stair
leading to the upper deck lounge, boat deck and pilot house. Aft either side is stairs to the swim
platform and transom crew access door. The deck area is sheltered by the boat deck overhang.
Water access is extremely easy and the swim platform is an ideal dinghy mooring. Port and
starboard side boarding gates provide dock access. On either side are additional boarding gates,
just forward of amidships. The swim platform has a 3-section removable stainless steel rails with
a center line swing gate. Offset to starboard is the concealed swim ladder. Center line is a
general stowage compartment with drains making it suitable for wet items.

Foredeck

Bench seat w/Sunbrella cushions & drink holders Saltwater and freshwater wash down system

Sunbrella cushioned 7' x 7' sun pad with drink holders Textilene windshield shades (2) self stowing stainless steel 130 lb anchors Approximately 300' chain for each anchor (2) anchor hawes pipes (2) Maxwell 3500 hydraulic windlasses with remote control Maxwell Pilothouse chain counter read outs (inoperative) Deck hatch Built-in storage lockers port & starboard Custom rail & boarding ladder storage Fenders and Lines Wrap around piling fenders

Deck & Hull

5-blade Nibral propellers Stainless steel rudders 3" stainless steel shafts (22) port lights w/stainless steel interior storm covers Bronze main & intermediate struts with backing plates 4" solid fiberglass rub rails w/ stainless caps Teak cap rails with stainless rubbing strake Collision bulkhead Construction overview: The hull and superstructure are finished in white high gloss. The hull is hand laid in the mold with solid fiberglass bottom, longitudinal stringers and highdensity Divinacell foam cored for extra strength and weight savings. A strong collision bulkhead is integrated forward for additional safety.

Engine & Mechanical Equipment

The interior engine room access is forward from the crew's area. It features double foam and lead sound and heat insulation diamond aluminum deck plates and two fulllength stainless steel grab rails on either sides of the engines. Engine room sound insulation Sealand VacuFlush freshwater head system Emergency engine stops Triple Racor fuel filters for main engines American Bow Thruster hydraulic 37 hp bow thruster & a stern thruster both with proportional controls Mathers micro commander electronic engine controls w/ aft deck remote Caterpillar electronic engine synchronizers Fireboy automatic/manual fire control system Naiad stabilizers Engine block heaters Hynautic hydraulic wheel steering Underwater exhaust system Fuel prime pumps Fuel transfer pumps Sea Recovery 800 GPD watermaker (out of service) Sea Recovery oil water separator and prefilter Denison 80 hp hydraulic pump on port engine for thrusters & windlass Walker AirSeps Gray water sump pump Air induction system AC water pump Engine temperature & oil pressure alarm Engine room gauge panels for main engines Fluorescent lighting Marine Air chilled water reverse cycle air conditioning (2) 5 ton staged chillers (new 2014 & 2015) Holding tank approximately 100 gallons 4 engine room blowers, 2 110VAC and 2 24VDC

Electrical Equipment

(2) 32kW Northern Lights generators with approx. 2662 hrs (port) & 2841 hrs (stbd) 1/20/2014 Generator batteries (new 2014) Gas/water exhaust separators Sound attenuation boxes for the generators Racor fuel filters for each generator 110 and 220V AC electrical systems 24V DC electrical system AC, DC lighting system w/ Vimar switches Engine driven DC alternators (2) Acem isolation transformers (2) 75 amp Mastervolt battery chargers Voltage meters Charles Smart "Y" adapter (250 amp to 100 amp) (2) 80' 100 amp shore power cables 2 Glendinning

Cable Master systems Navigation Electronics battery Converter 4 Engine Start batteries (new 2016) 8-8D Gel Cell House batteries

Remarks

Built as hull #10 in the 82 custom series by Horizon Yacht Company. Her accommodations and space utilization are comparable to many yachts 100' and larger. In addition to comfort she exhibits excellent sea keeping abilities with a soft, dry and stable ride. The yacht was extensively redecorated throughout by her current owners including not only the fabrics but many of the wall coverings and most of the window treatments. Additionally, many of the lamps and accent items throughout make the yacht look and feel like she was just launched and delivered with the latest finery. Numerous upgrades have been incorporated into the yacht. Until late October 2013 the yacht was berthed and maintained in a totally enclosed boat house, in fresh water and only lightly used during the summer months. Last maintenance haul out March/April 2015. If you are looking for exceptional quality and a gleaming new paint job, this is an absolute must see yacht.

Exclusions

Owner's personal effects, some tools and maintenance items, crystal, serving pieces, bar accessories, galley utensils, and any items not specifically itemized on this listing description.

Исключения

При продаже яхты исключаются личные вещи владельца.

Отказ от ответственности

Компания предоставляет описание судна или яхты добросовестно, но не может гарантировать точность этой информации, а также не ручается за техническое состояние. Покупатель должен проинструктировать своих агентов или оценщиков исследовать представленную информацию более подробно, по собственному желанию. Продажа судна или яхты, изменение цены или снятие с продажи будет происходить без предварительного уведомления.

ФОТОГРАФИИ

Aft Deck



Foredeck



Main Salon



Salon



Master



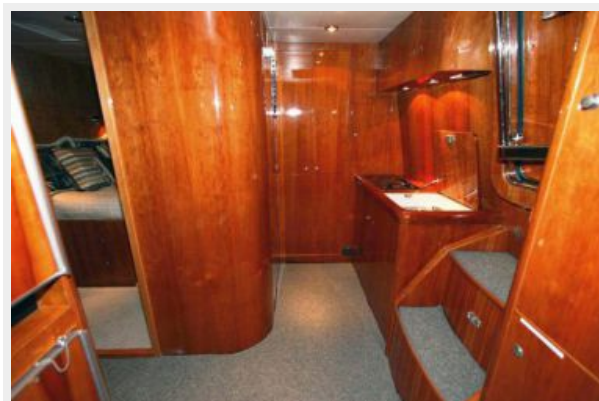
Master Head 2



VIP



Crew Lounge



Galley



Galley



Forward Dinette



Skylounge



Skylounge



Pilothouse



Pilothouse



Engine Room



КОНТАКТЫ

Андрей Шестаков (Andrey Shestakov) – ведущий яхтенный брокер отдела продаж яхт и судов компании Shestakov Yacht Sales Inc. Официальный представитель Shestakov Yacht Sales Inc. для русскоговорящих клиентов в центральном офисе компании в Майами/Форт Лодердейл/Флорида/США.

Контактная информация

Email: andrey@shestakovyachtsales.com

Web: shestakovyachtsales.com

Телефоны

Краснодарский край: **+7(918)465-66-44**

США, Майами, Флорида: **+1(954)274-4435**

Время работы

Понедельник – Суббота: **9:00 - 21:00**
EDT

Воскресенье: **Закрито**

Адрес



Harbour Towne Marina, 850 NE 3rd St,
STE 213, Dania, FL 33004