

MIRAGE — CRUISERS YACHTS



Судостроитель: [Cruisers Yachts](#)

Год постройки: 2005

Модель: Крейсер

Цена: **ЦЕНА ЯХТЫ ПО ЗАПРОСУ**

Местонахождение: United States

Длина общая: 54' 0" (16.46m)

Ширина: 16' 0" (4.88m)

Макс. осадка: 3' 10" (1.17m)

Крейс. скорость: 24.331334776 Kts. (28 MPH)

Купить **Mirage — Cruisers Yachts** а также выбрать подходящую вам яхту из нашего каталога яхт вам поможет опытный яхтенный брокер Андрей Шестаков. На сегодняшний день компания **Shestakov Yacht Sales Inc.** имеет большое количество яхт в собственном списке продаж, а также тесно сотрудничает со всеми крупными яхтенными производителями по всему миру.

Для того чтобы купить яхту **Mirage — Cruisers Yachts** а также проконсультироваться по любому вопросу связанному с покупкой, продажей, чартером яхт позвоните по телефону **+7(918)465-66-44**.

ОГЛАВЛЕНИЕ

ОГЛАВЛЕНИЕ	2
ХАРАКТЕРИСТИКИ	5
Обзор	5
Основная информация	5
Размеры	5
Скорость, вместимость и масса	6
Размещение	6
Корпус и палуба	6
Информация о двигателе	6
ПОДРОБНОЕ ОПИСАНИЕ	7
Salon	7
Galley	7
Master Stateroom	8
Master Head	8
VIP Stateroom	8
VIP Head	8
Helm	9
Electronics	9
Electrical Systems	9
Engine Room	10
Lower Cockpit	10
Upper Cockpit	11
Transom	11
Extras	12
Исключения	12
Отказ от ответственности	12
ФОТОГРАФИИ	13
Salon-Forward	13

Salon-Aft	13
Salon-Convertible Sofa	13
Salon-Table	13
Salon Stow-Away Table	13
Salon - TV on Swivel	13
Galley	14
Galley	14
Master Stateroom	14
Master Stateroom	14
Master Head	14
Master Stateroom	14
VIP Stateroom	15
VIP Stateroom	15
Guest Head	15
Helm	15
Helm Seating	15
Sun Roof w/ Custom Shade Cover	15
Cockpit	16
Cockpit - Forward	16
Cockpit-Large Screen TV	16
Cockpit - Aft	16
Cockpit - Wetbar	16
Cockpit - Fridge & Ice maker	16
Cockpit Stereo	17
Cockpit - Grill	17
Windlass	17
Windshield Cover	17
Profile	17
КОНТАКТЫ	18

Контактная информация	18
Телефоны	18
Время работы	18
Адрес	18

ХАРАКТЕРИСТИКИ

Обзор

1 Mirage is the perfect example of a well-maintained Cruisers 54 Express. She is spacious, fast, and easy to operate with lots of extras for your cruising comfort. She is fully enclosed to keep in the cockpit AC, has a built in Magna grill stowed away on the trunk on the transom, FLIR infrared night vision, upgraded Garmin Touchscreen Electronics, KVH SAT TV, 42 Cockpit TV, Upgraded Fusion Stereo, Bow Thruster six man life raft and more.

Below her spacious Galley and Salon area is large enough to entertain dozens of friends and family. She has a stow away dinette/coffee table and sofa that converts to sleeper. The master stateroom has full walk around queen, walk in closet and large private head. The forward VIP stateroom is larger than most similar boats master stateroom.

The current and previous owners have been long time Galati have customers. They are moving from the boating world to the RV world. Mirage is ready to go with ANNUAL SERVICE on engines and generator COMPLETED JULY 2014 and new bottom paint in the spring of 2014.

Основная информация

Тип судна: Крейсер

Подкатегория: Express

Модельный год: 2005

Год постройки: 2005

Страна: United States

Номер регистрации в береговой охране: 1218219

Размеры

Длина общая: 54' 0" (16.46m)

Ширина: 16' 0" (4.88m)

Макс. осадка: 3' 10" (1.17m)

Длина привального бруса: 58' 0" (17.68m)

Скорость, вместимость и масса

Крейс. скорость: 24.331334776 Kts. (28 MPH) **Водоизмещение:** 46000 Pounds

Вместимость воды: 150 Gallons

Вместимость сточного бака: 100 Gallons **Объем топливного бака:** 650 Gallons

Размещение

Всего кают: 2

Всего ком. состава: 2

Корпус и палуба

Материал корпуса: Fiberglass

Цвет корпуса: Blue

Информация о двигателе

Двигатели: 2

Производитель: Volvo Penta

Модель: D12-715

Тип двигателя: Inboard

Тип топлива: Diesel

ПОДРОБНОЕ ОПИСАНИЕ

Salon

The salon features a large U-shaped sofa with recliners on each end and a center section that electrically converts to a sleeper. The dining table adjusts in height with the push of a button and extra leaves expand for dining. Solid cherry wood cabinetry.

- Sofa, U-shaped, Ultraleather with recliners and sleeper
- Decorator pillows and accents
- Solid cherry table, extendable and adjustable, self storing and electrically actuated
- 32" LCD TV, HD flat panel
- Satellite TV
- Stereo system with surround sound and 5 disc DVD/CD player
- Dimmer controls on lights
- Mirrored bar with bottle storage
- Wine cooler
- Carpeting and carpet cover
- Amtico flooring in galley
- Central vacuum system
- Cherry wood entry accents
- Bar stools (2), removable
- Cherry entry treads
- Cherry cabinetry and solid surface insets

Galley

The well equipped galley is opposite the salon with great counter space and lots of storage!

- Cook top, 3 burner electric w/glass top
- Stainless steel refrigerator/freezer
- Built in ice maker
- S.S. microwave/convection oven
- Drawer dishwasher
- Solid surface counter tops
- Single large stainless steel sink
- Cabinets and drawers
- Carpeting with carpet cover
- Amtico Flooring
- Dockside water and pressure system

Master Stateroom

- Large island berth
- Therapeutic mattress
- Walk in closet, with cedar
- Washer/dryer
- Flat panel satellite LCD TV
- Stereo DVD
- Ensuite head
- Opening ports
- Decorator bed spreads
- Decorator pillows
- Dimmer controls on lights
- Solid cherry cabinetry

Master Head

- Corian counter tops
- Ceramic tile flooring
- Mirrored vanity with storage
- Cherry wood cabinetry
- Head rebuilt March 2013
- Separate stall shower
- Abundant storage
- Exhaust fans

VIP Stateroom

- Queen island berth
- Solid cherry cabinetry
- Abundant cabinets
- Dimmer controls on lights
- Large walk-in cedar lined closet
- Flat panel satellite LCD TV/DVD
- Cedar hanging locker
- Full standing head room
- Head and shower accessible from cabin

VIP Head

- Stall shower

- Bench seat
- Ceramic tile flooring
- Exhaust fans
- Cherry wood
- Head rebuilt in March 2013
- Solid surface counter top
- Mirrored vanity with storage
- Abundant storage

Helm

- Electric captain's seat
- Electric companion seat
- Dedicated helm air conditioner - (x2)
- Additional air vents at helm
- Electronic engine controls
- Keyless ignition system
- Tilt steering wheel
- Full electronics package
- Remote spot light control
- Bow thruster control
- Electronic engine controls

Electronics

- 5212 and 7212 Garmin GPS, Plotter & Sounder
- 4 kW open array radar
- Wifi amp - Rogue Wave
- Raymarine 8001 autopilot
- Weather channel for Garmin
- Dual KVH satellite antennas
- Cellular antenna
- Garmin GHS10 VHF and Haler
- KVH satellite TV's
- FLIR Infrared Night Vision

Electrical Systems

- Inverter- Magnum Energy MS- 120V/33A. A/C continuous output
- 13.5 kW Onan generator w/sound shield
- 240 V, 50 amp shore cord, 90' long

- 95 amp battery charge/monitor system
- (3) 2000 GPH bilge pumps
- (1) 3700 GPH bilge pump
- 5 air conditioning/heating systems
- 20 gallon hot water system
- Washer/dryer combo
- 8 HP bow thruster

Engine Room

- Twin D12, 715 HP Volvo diesels - 930 Hours (Serviced July 2014)
- Air conditioned engine room
- 13.5 kW Onan generator
- Extra large pressure water pump
- Oil change system
- Macerator pump out
- Fire extinguisher, automatic
- Manual fuel cross-over system

Lower Cockpit

- Engine room access
 - AM/FM/CD stereo
 - Air conditioning
 - Removable table
 - Storage under seating
 - Camper enclosure
 - Wrap-around seating
 - Strataglass full enclosure
 - Canvas full enclosure
-
- Engine room access
 - AM/FM/CD stereo
 - Air conditioning
 - Removable table
 - Storage under seating
 - Camper enclosure
 - Wrap-around seating
 - Strataglass full enclosure
 - Canvas full enclosure
 - Engine room access
 - AM/FM/CD stereo

- Air conditioning
- Removable table
- Storage under seating
- Camper enclosure
- Wrap-around seating
- Strataglass full enclosure
- Canvas full enclosure
- Engine room access
- AM/FM/CD stereo
- Air conditioning
- Removable table
- Storage under seating
- Camper enclosure
- Wrap-around seating
- Strataglass full enclosure
- Canvas full enclosure

Upper Cockpit

- Plasma pop-up TV
- Ice maker
- Refrigerator
- Wet bar, hot and cold, sink
- Storage
- Hard top
- Full enclosure
- Electric sun roof - Sun roof custom shade
- Seating
- Air conditioned

Transom

- Magma gas grill - built into transom storage
- Seating on transom
- Stereo remote on transom
- Abundant storage
- Under water lights
- Hydraulic swim platform - all hydraulic components replaced - July 2014
- Dinghy chocks
- Glendinning cable master with 90' cord
- Bench seat with arm rests

Extras

- There is a tender available for purchase separately. 11' Center Console Inflatable with 25hp Yamaha Four-Stroke, 10 gallon fuel tank, depth sounder, running lights, and bimini top

Исключения

При продаже яхты исключаются личные вещи владельца.

Отказ от ответственности

Компания предоставляет описание судна или яхты добросовестно, но не может гарантировать точность этой информации, а также не ручается за техническое состояние. Покупатель должен проинструктировать своих агентов или оценщиков исследовать представленную информацию более подробно, по собственному желанию. Продажа судна или яхты, изменение цены или снятие с продажи будет происходить без предварительного уведомления.

ФОТОГРАФИИ

Salon-Forward



Salon-Aft



Salon-Convertible Sofa



Salon-Table



Salon Stow-Away Table



Salon - TV on Swivel



Galley



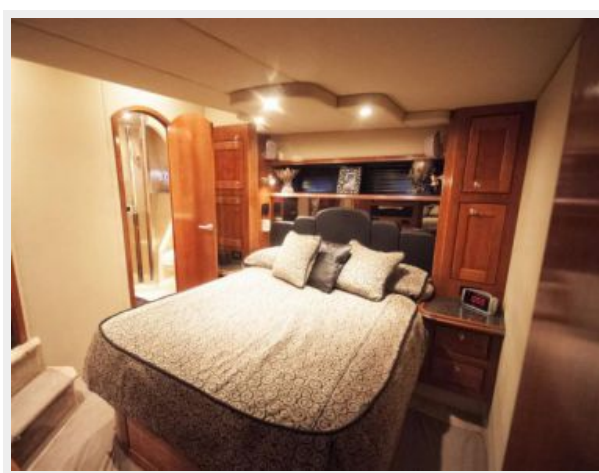
Galley



Master Stateroom



Master Stateroom



Master Stateroom



Master Head



VIP Stateroom



VIP Stateroom



Guest Head



Helm



Helm Seating



Sun Roof w/ Custom Shade Cover



Cockpit



Cockpit - Forward



Cockpit - Aft



Cockpit-Large Screen TV



Cockpit - Wetbar



Cockpit - Fridge & Ice maker



Cockpit Stereo



Cockpit - Grill



Windlass



Windshield Cover



Profile



КОНТАКТЫ

Андрей Шестаков (Andrey Shestakov) – ведущий яхтенный брокер отдела продаж яхт и судов компании Shestakov Yacht Sales Inc. Официальный представитель Shestakov Yacht Sales Inc. для русскоговорящих клиентов в центральном офисе компании в Майами/Форт Лодердейл/Флорида/США.

Контактная информация

Email: andrey@shestakovyachtsales.com

Web: shestakovyachtsales.com

Телефоны

Краснодарский край: **+7(918)465-66-44**

США, Майами, Флорида: **+1(954)274-4435**

Время работы

Понедельник – Суббота: **9:00 - 21:00**
EDT

Воскресенье: **Закрито**

Адрес



Harbour Towne Marina, 850 NE 3rd St,
STE 213, Dania, FL 33004