

CORK TRICK — TARRAB



Судостроитель: TARRAB

Год постройки: 2002

Модель: Моторная яхта

Цена: **ЦЕНА ЯХТЫ ПО ЗАПРОСУ**

Местонахождение: United States

Длина общая: 92' 0" (28.04m)

Ширина: 21' 6" (6.55m)

Мин. осадка: 5' 0" (1.52m)

Крейс. скорость: 18 Kts. (21 MPH)

Макс. скорость: 21 Kts. (24 MPH)

Купить **CORK TRICK — TARRAB** а также выбрать подходящую вам яхту из нашего каталога яхт вам поможет опытный яхтенный брокер Андрей Шестаков. На сегодняшний день компания **Shestakov Yacht Sales Inc.** имеет большое количество яхт в собственном списке продаж, а также тесно сотрудничает со всеми крупными яхтенными производителями по всему миру.

Для того чтобы купить яхту **CORK TRICK — TARRAB** а также проконсультироваться по любому вопросу связанному с покупкой, продажей, чартером яхт позвоните по телефону **+7(918)465-66-44**.

ОГЛАВЛЕНИЕ

ОГЛАВЛЕНИЕ	2
ХАРАКТЕРИСТИКИ	5
Основная информация	5
Размеры	5
Скорость, вместимость и масса	5
Размещение	5
Корпус и палуба	6
Информация о двигателе	6
ПОДРОБНОЕ ОПИСАНИЕ	7
Vessel Walkthrough	7
Aft Deck	8
Salon	8
Dining	9
Galley	9
Pilothouse	10
Foyer	10
Master Stateroom	11
VIP Stateroom	11
Guest Stateroom 1	11
Guest Stateroom 2	12
Crew Quarters	12
Cockpit	12
Flybridge	13
Electrical System	14
Mechanical Equipment	14
Исключения	16
Отказ от ответственности	16
ФОТОГРАФИИ	17

Salon	17
Salon	17
Formal Dining	17
Formal Dining	17
Galley	17
Galley	17
Galley	18
Pilot House	18
Pilot House	18
Pilot House	18
Day Head	18
Master Stateroom	18
Master Stateroom	19
Master Stateroom	19
Master Head	19
Master Head	19
VIP Stateroom	19
VIP Head	19
Guest Stateroom	20
Guest Head	20
Guest Stateroom	20
Guest Head	20
Aft Deck Dining	20
Aft Deck Dining	20
Aft View	21
Flybridge Helm	21
Flybridge	21
Flybridge	21
Flybridge	21

Flybridge	21
Engine Room	22
Engine Room	22
Engine Room	22
Engine Room	22
Cockpit	22
Transom	22
КОНТАКТЫ	23
Контактная информация	23
Телефоны	23
Время работы	23
Адрес	23

ХАРАКТЕРИСТИКИ

Основная информация

Тип судна: Моторная яхта

Модельный год: 2002

Год постройки: 2002

Страна: United States

Верх: Hardtop

Открытая палуба мостика: Да

Кубрик: Да

Размеры

Длина общая: 92' 0" (28.04m)

Ширина: 21' 6" (6.55m)

Мин. осадка: 5' 0" (1.52m)

Трапы: 31' 0" (9.45m)

Скорость, вместимость и масса

Крейс. скорость: 18 Kts. (21 MPH)

Крейсерская скорость поворота: 1950 Kts.

Макс. скорость: 21 Kts. (24 MPH)

Макс. скорость поворота: 2300 Kts.

Чистый вес: 130 Pounds

Вместимость воды: 260 Gallons

Объем топливного бака: 2700 Gallons

Размещение

Всего кают: 4

Спальные места: 8

Всего ком. состава: 5

Каюты экипажа: 2

Койки экипажа: 3

Спальных мест экипажа: 3

Комм. состав экипажа: 1

Корпус и палуба

Материал корпуса: Fiberglass

Материал палубы: Fiberglass

Комплектация корпуса: Semi Vee

Информация о двигателе

Двигатели: 2

Производитель: Caterpillar

Модель: 3412E

Тип двигателя: Inboard

Тип топлива: Diesel

ПОДРОБНОЕ ОПИСАНИЕ

Vessel Walkthrough

CORK TRICK's layout makes the most sense of any in her size class. From a fixed dock, the cockpit is easily accessed from the yacht's low gunwales. It may also be boarded from the sizable swim platform, through the transom gate and onto the spacious cockpit. The cockpit features teak sole, lazarette access, storage cabinets, transom bait well and sink for fishing, also the aft controls complete with Mathers electronic shifters and hydraulic bow thruster controls. Additionally, there are a couple of Avonite-type counter surfaces for utility, a fresh water shower, and access to the crew quarters aft through a door. Down a few steps are the crew quarters with two staterooms. The port side stateroom features a bunk with abundant drawer and hanging storage for a mate. This stateroom also houses a large icemaker for the yacht's use. The captain's stateroom is to starboard and features a Panasonic hybrid phone for communications throughout for the vessel. The berth is a double and the cabin also features a tight berth bunked below for a third crew member who has no fear of tight spaces! There is ample hanging and drawer storage for both. There is access in the foyer to both the washer and dryer, as well as a general crew head and stall shower shared by both staterooms below. This crew bath has a Headhunter toilet, lighted vanity, Corian type counter top with sink, ample storage for toiletries, and literature rack. The engine room access is forward of the crew quarters with ample access to both generators, their water supply equipment, fuel supply and filtration, as well as water supply for the air-conditioning chilled water system and compressors. The batteries are all-access centerline underneath the center walker panels. The watermaker console is outboard, along with the toolbox. Moving back up into the cockpit and around either side are staircases leading up onto the aft deck. This aft deck is fully covered, with a full molded transom seat with storage underneath. The teak table is a full six feet wide with an additional four chairs positioned around to accommodate a total of eight. The forward area of the aft deck has a ladder to access the aft area of the flybridge deck and tender storage. The entrance to the full beam salon is located just to the right of the ladder. Once inside the salon, one immediately notices the value of her full 21'6" beam layout. Large settees are located both port and starboard with a table and two large barrel type chairs for entertaining. There is a large 42" plasma TV with full stereo entertainment quartered in the aft port side of the salon. The interior of CORK TRICK was completely updated with new soft goods in 2012. Forward of the salon is a formal dining area suited for eight owners and guests. The forward cabinets showcase the yacht's fine china and tableware in seakeeperware holders. There is abundant cabinet space around the dining area for tableware. Moving forward into the foyer, the granite floors to port flow into the huge day head with Headhunter toilet, lighted vanity with marble tops, and ample storage for toiletries. Access to the master & guests' staterooms is down a spiral staircase centerline. The galley entrance is also here. The large working galley features all American appliances, huge commercial Sub-Zero refrigeration units, granite floors, and granite counter tops. The foyer then leads to the large pilothouse forward and features guest seating for six with a panoramic view of the surrounding activity and crew's operation of the yacht. The dash is massive and ergonomic, with all necessary equipment plus many extras not found on her competition. Port and starboard pilothouse doors

provide access to the forward decks around to the spacious bow. This bow has high railing for guests and a huge sun pad, which converts to a forward table and dining area. The internal access to the flybridge is from the aft of the pilothouse. Once on the flybridge deck one notices the vast entertainment seating areas available to all guests. The hard top and EZ2CY hard enclosures forward ensure minimization of the elements while cruising, and sun lovers can enjoy nearly 20 feet of open aft deck with seating, grill top, and refrigeration for beverages. The dinghy is a 15-foot center console Novurania with 70 hp Yamaha engine, hoisted by a MarQuipt 1500-lb. davit crane. Returning to the pilothouse, there are two options to go to below to the guests' and owner's accommodations. The VIP is secluded forward down a staircase to port. This large stateroom with its own entertainment center, abundant storage, including a cedar-lined hanging locker, and very large en-suite head with Headhunter toilet, large stall shower, marble counter tops, lighted vanity, and ample toiletry storage. The main staterooms are located amidships, accessed by walking aft through the pilothouse and down another spiral staircase. There is a washer/dryer for the main staterooms in the foyer at the below-deck landing. The guest staterooms are a mirrored arrangement forward: each with large side-by-side berths, custom linens, a center lamp, reading lights, abundant drawer and cabinet storage, and cedar-lined hanging lockers. Each of these staterooms enjoys its own en-suite head with lighted vanity, marble counter tops and sink, under counter storage, stall shower, and Headhunter toilet. The master is most impressive with "His and Hers" walk-in cedar-lined closets and a vanity with cosmetic storage and mirror for her, large enough to accommodate a self-standing chair. There is an incredible amount of drawer storage both port and starboard. The entertainment center features a 27" flat panel TV with full audio and video equipment. The centerline king berth features overhead reading lights, and a custom mattress, with custom linens. The other great feature of this master is the "His and Hers" bath. This bath is the size of most 110' builders' baths with a full compliment of facilities, both outboard of the centerline Jacuzzi tub and shower with glass sliders and gold faucets. The heads both have lighted vanities, abundant storage for toiletries, marble counter surfaces, and Headhunter toilets.

Aft Deck

- Controls including Mathers shifters
- Naiad bow thruster
- Bait well
- 36- Gal. fresh oil storage under sole in Lazzarette
- 2 Storage cabinets

Salon

- Panasonic Hybrid Phone with intercom throughout

- Marantz 42" Plasma TV
- DirecTV HD VDR HR 10-250
- Marantz VCR
- Sony DVD
- Marantz AV Surround receiver
- Crestron unit for entertainment only (not rigged into TV)
- Teach CD Player
- 2 Over-stuffed couches where one is a pullout sleeper
- 2 Large barrel style chairs
- Large glass and wood coffee table
- Custom blinds
- Custom lamps
- Custom rope lighting

Dining

- Large custom table with seating for 8
- 8 Dining chairs
- 8 Glass curio cabinets for dinnerware and glasses
- Large bar to port with storage underneath
- China storage cabinetry forward of dining area
- Custom blinds, lamps, and rope lighting

Galley

- GE Profile convection microwave (overhead)
- GE Profile oven under counter
- GE Profile surface mount 4-burner stove
- GE Profile dishwasher
- GE Profile trash compactor
- Sub-Zero refrigerator/freezer
- Abundant utensil & under counter storage
- Large sink

- Granite countertops

Pilothouse

- ICOM M502 VHF
- KVH Trac Phone
- Village Marine Remote RO controller
- ACR RCL-100 spot/search light
- Furuno Nav Net with GPS, Depth and Radar
- 2 Northern Lights remote starts with gauge packs
- Fireboy remote
- Maxwell anchor windlass remote
- Northstar 952
- 2 VEI computer screens for weather (XM) and window applications
- Delta camera system switch selector (inoperable)
- Compaq Presario computer system
- HP 8200 Series CD writer
- Pioneer DEHP4100 CD/AM/FM stereo
- Mathers electronic shift controls
- Stidd helm chair
- 120V & 12V power panels
- Tank Sentry fuel level monitor
- Groco holding tank monitor
- Tarrab general alarm/awareness system
- Moon-shaped panoramic view seating for six with table

Foyer

- Granite flooring
- Access to galley
- Access to day head
- Wine cabinet

Master Stateroom

- "His and Hers" cedar-lined walk-in closets
- Samsung 27" Flat screen TV
- Sony com. Mini HiFi DHC-MD333
- Sony 5-disc CD/DVD changer DVP-NC600
- Vanity with lighting, mirror and chair
- Keyed safe, wall in closet
- King berth with custom mattress
- Abundant storage
- "His and Hers" bath with shower

VIP Stateroom

- Panasonic Omni Vision VHF
- Panasonic 13' TV/VCR
- Panasonic DVD CX-DVP292
- Pioneer CD/AM/FM DEINP4100
- Double berth with access underneath to bow thruster
- Abundant cabinet hanging storage lockers, cedar-lined
- En-suite head with lighted vanity
- Stall shower
- Headhuner toilet
- Marble countertops
- Access companionway down to amidships staterooms
- GE Stack washer/dryer

Guest Stateroom 1

- Panasonic Omni Vision VHF
- Twin berths with storage underneath
- Panasonic 13' TV/VCR
- Panasonic DVD CX-DVP292
- Pioneer CD/AM/FM DEINP4100
- Cedar-lined closets
- En-suite head with stall shower

Guest Stateroom 2

- Panasonic Omni Vision VHF
- Panasonic 13' TV/VCR
- Panasonic DVD CX-DVP292
- Pioneer CD/AM/FM DEINP4100
- Twin berths with storage underneath
- Cedar-lined closets
- En-suite head with stall shower

Crew Quarters

- 2 Staterooms
- Captain's double berth with pigeon hole berth below
- 1 Crew bunk with storage
- Head and shower
- Frigidaire washer and dryer
- Scotsman icemaker

Cockpit

- Controls including Mathers shifters
- Naiad bow thruster
- Bait well
- 36- Gal fresh oil storage under sole in Lazarette
- 2 Storage cabinets

Flybridge

- Helm
- Caterpillar controls
- Remote starts for both Northstar generators
- Robertson AP20 autopilot remote
- Maxwell Anchor winch remote
- MZ Electronics chain counter
- Naiad roll stabilizer panel
- Furuno 48-mile radar
- Furuno FCV-582L
- 2 Horizon depth/speed repeaters
- Standard Horizon Quest VHF
- Sony CDX-F50M CD stereo
- Sirius satellite radio
- Sony Trinitron KV-9PT50 9" TV
- Northstar 951X
- Fiberglass hardtop
- EZ2CY Panel enclosures
- Storage under all seating
- GE Monogram stainless steel refrigerator

- Gaggenau grill top
- Sink
- 15' Novurania
- 2 Winslow 8-person life rafts

Electrical System

- Twin Northern Lights 33kW generators with 2900 hours
- Main electrical panel at crew quarters, with 240 and 120V AC circuit breakers
- 12V DC circuit breakers
- AC and DC amp, volt and frequency meters
- Main panel for generators
- 6 main cranking batteries for engines, generators
- 2 Main batteries for house service
- C-Charger 24V DC
- Ceiling 110V lights in engine room
- FGCI outlets in all heads, galley, forward storage compartment, flybridge, aft deck, crew lounge and engine room
- Cable master electrical inlet 204/120 (AC) 100 amp w/50 ft. Cable and isolation transformer at transom
- 2 Underwater Corporation underwater lights

Mechanical Equipment

- Twin Caterpillar 3412 1475 Hp engines with approx. 1600 hrs.
- Twin Disc marine gears
- Engine synchronizers
- Engine alternators
- Engine room fresh air supply (manual) from flybridge vents

- Dual Racor M1000 fuel water separators
- Seawater intake strainers
- Bronze through-hull intakes
- Leeson oil changing system with 36 gal new oil storage under cockpit in Lazarette
- Oil pick up and discharge lines run to swim platform
- Marine Air chilled water air conditioning system with reverse-cycle heat 12 Ton (144,000BTU)capacity with air handlers located throughout with individual climate control in each room
- Toshiba soft starts for air conditioning compressors
- Naiad hydraulic stabilizers 254 with 6' square fins controlled at pilothouse and flybridge
- Naiad hydraulic bow thruster 35 hp with PTO from port generator
- Village Marine 12 GPD watermaker
- Fuel tanks with isolation valves
- Hitachi Koki air compressor
- Kahlenberg double air horns
- 3.5" Aquamet prop shafts
- Stainless steel struts with rubber strut bearings
- 4-blade propellers (Primary)
- Stainless steel rudders
- Hynautic power assist steering
- Fortress FX-125 Anchor aluminum anchor with 300' galvanized chain
- Mathers electronic control boxes for shifters and throttles
- Fireboy automatic fire system with auto shutdown at flybridge and pilothouse
- Shaft, rudders, and underwater gear zincs and bonding
- Exhaust blowers for all bathrooms
- Fuel and water deck fill plates

- Freshwater system with Headhunter Stingray primary pump at 20 to 60 psi
- Freshwater secondary pump with Headhunter Jethead at 15 to 35 psi
- American 30-gal water heater
- Rule 12V DC 3700 gph bilge pumps
- Sinks, showers, and air condition condensate drained into gray water holding with auto discharge
- Blackwater tank plumbed for dockside discharge from pump out, or overboard discharge offshore
- Headhunter toilets –all rooms
- Freshwater wash downs at bow flybridge and aft deck
- Water supply with pressure regulator for chilled water system
- Water fill hose for main engines and generators

Исключения

При продаже яхты исключаются личные вещи владельца.

Отказ от ответственности

Компания предоставляет описание судна или яхты добросовестно, но не может гарантировать точность этой информации, а также не ручается за техническое состояние. Покупатель должен проинструктировать своих агентов или оценщиков исследовать представленную информацию более подробно, по собственному желанию. Продажа судна или яхты, изменение цены или снятие с продажи будет происходить без предварительного уведомления.

ФОТОГРАФИИ

Salon



Salon



Formal Dining



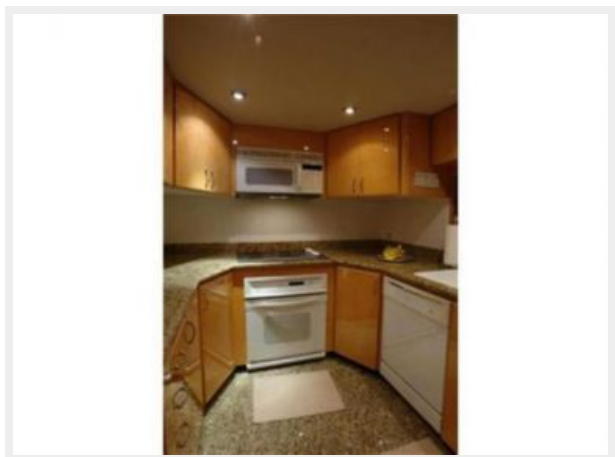
Formal Dining



Galley



Galley



Galley



Pilot House



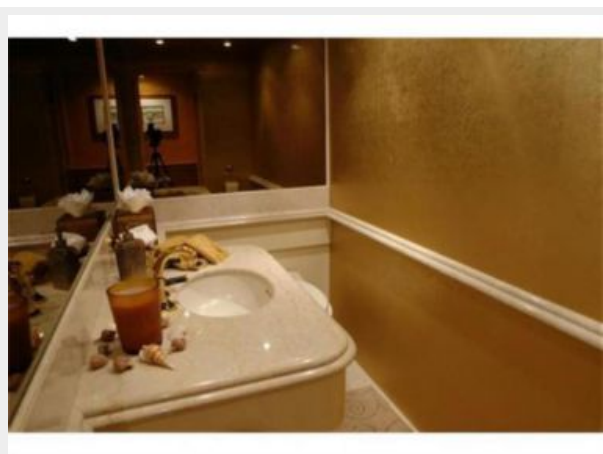
Pilot House



Pilot House



Day Head



Master Stateroom



Master Stateroom



Master Stateroom



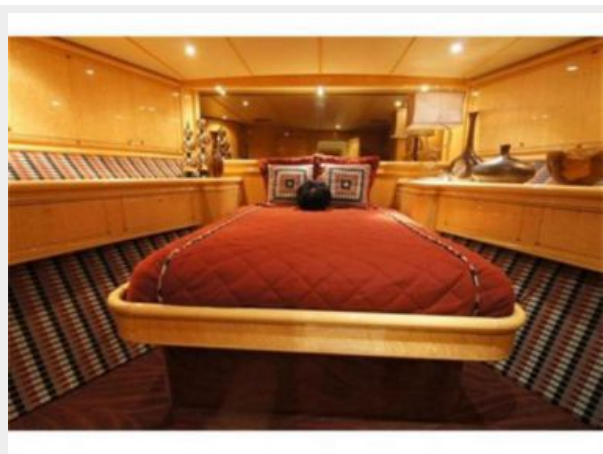
Master Head



Master Head



VIP Stateroom



VIP Head



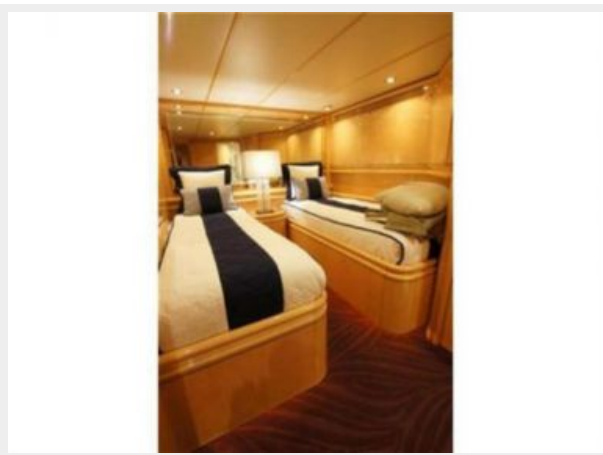
Guest Stateroom



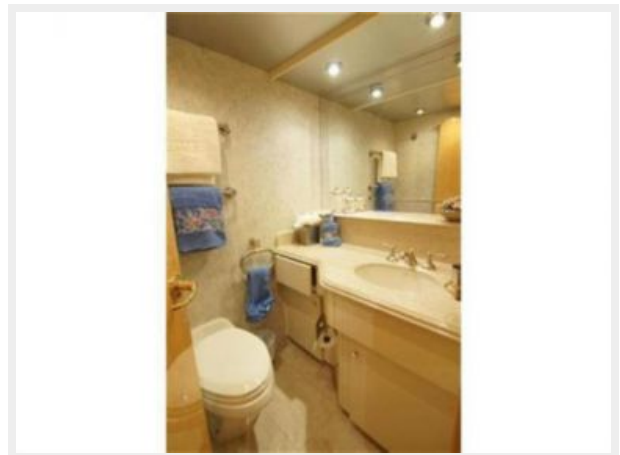
Guest Head



Guest Stateroom



Guest Head



Aft Deck Dining



Aft Deck Dining



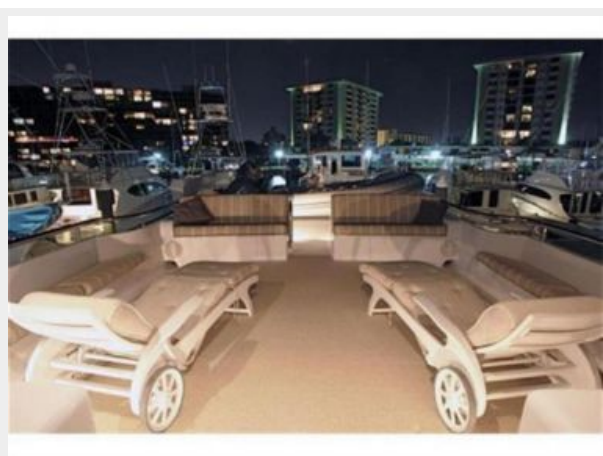
Aft View



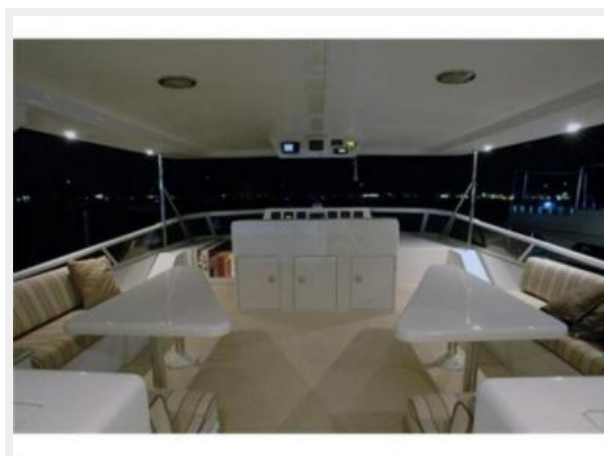
Flybridge Helm



Flybridge



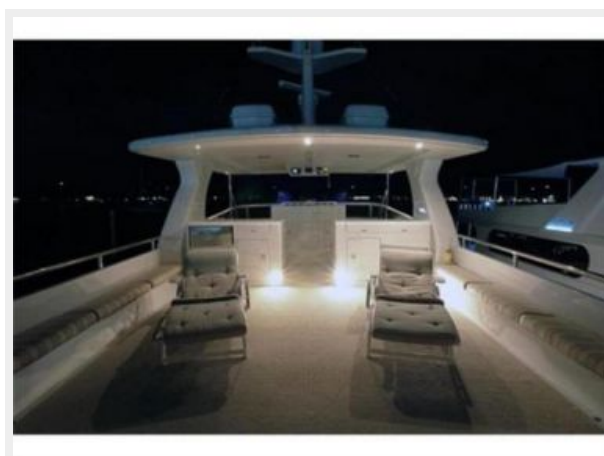
Flybridge



Flybridge



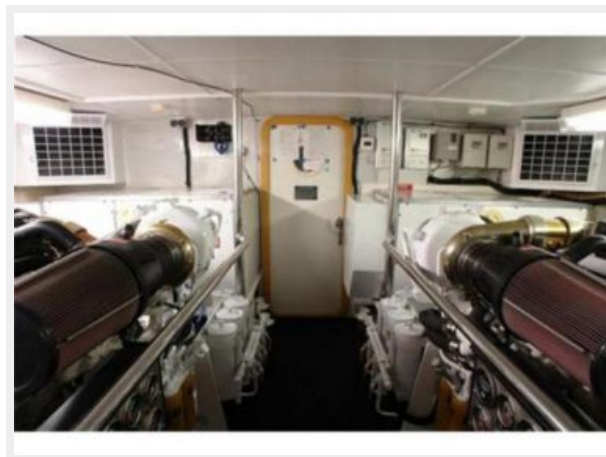
Flybridge



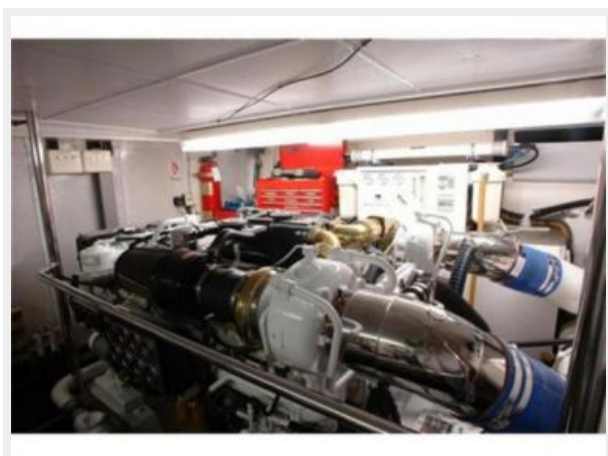
Engine Room



Engine Room



Engine Room



Engine Room



Cockpit



Transom



КОНТАКТЫ

Андрей Шестаков (Andrey Shestakov) – ведущий яхтенный брокер отдела продаж яхт и судов компании Shestakov Yacht Sales Inc. Официальный представитель Shestakov Yacht Sales Inc. для русскоговорящих клиентов в центральном офисе компании в Майами/Форт Лодердейл/Флорида/США.

Контактная информация

Email: andrey@shestakovyachtsales.com

Web: shestakovyachtsales.com

Телефоны

Краснодарский край: **+7(918)465-66-44**

США, Майами, Флорида: **+1(954)274-4435**

Время работы

Понедельник – Суббота: **9:00 - 21:00**
EDT

Воскресенье: **Закрето**

Адрес



Harbour Towne Marina, 850 NE 3rd St,
STE 213, Dania, FL 33004