

## 54FT 1988 GULFSTAR 54 — GULFSTAR



**Builder:** GULFSTAR

**Year Built:** 1988

**Model:** Cruising Sailboat

**Price:** PRICE ON APPLICATION

**Location:** United States

**LOA:** 54' 0" (16.46m)

**Beam:** 15' 9" (4.80m)

**Max Draft:** 4' 11" (1.50m)

**Max Speed:** 8 Kts. (9 MPH)

Our experienced yacht broker, Andrey Shestakov, will help you choose and buy a yacht that best suits your needs 54ft 1988 Gulfstar 54 — GULFSTAR from our catalogue. Presently, at Shestakov Yacht Sales Inc., we have a wide variety of yachts available on our sale's list. We also work in close contact with all the big yacht manufacturers from all over the world.

If you would like to buy a yacht 54ft 1988 Gulfstar 54 — GULFSTAR or would like help answering any questions concerning purchasing, selling or chartering a yacht, please call +1(954)274-4435

# TABLE OF CONTENTS

TABLE OF CONTENTS	2
SPECIFICATIONS	3
Basic Information	3
Dimensions	3
Speed, Capacities and Weight	3
Accommodations	3
Hull and Deck Information	3
Engine Information	4
DETAILED INFORMATION	5
Key Features	5
Accommodations	5
Electronics & Navigation	9
Mechanical	9
Electrical	10
Construction & Deck	10
Exclusions	11
Disclaimer	11
PHOTOS	12
CONTACTS	15
Contact details	15
Telephones	15
Office hours	15
Address	15

# SPECIFICATIONS

## Basic Information

Category: Cruising Sailboat	Sub Category: Sloop
Model Year: 1988	Year Built: 1988
Country: United States	

## Dimensions

LOA: 54' 0" (16.46m)	Beam: 15' 9" (4.80m)
Max Draft: 4' 11" (1.50m)	Clearance: 59' 0" (17.98m)

## Speed, Capacities and Weight

Max Speed: 8 Kts. (9 MPH)	Max Speed Range: 1000 Kts.
Displacement: 50000 Pounds	Water Capacity: 267 Gallons
Holding Tank: 20 Gallons	Fuel Capacity: 380 Gallons

## Accommodations

Total Cabins: 3	Total Berths: 5
Total Heads: 2	

## Hull and Deck Information

Hull Material: Fiberglass
---------------------------

## Engine Information

---

**Engines:** 2

**Manufacturer:** Yanmar

**Model:** 4JHHTE

**Engine Type:** Inboard

**Fuel Type:** Diesel

---

# DETAILED INFORMATION

---

## Key Features

---

Sloop Rigged

TWIN Engines with Bow Thruster

Great Liveaboard/ Charter

4 LED Underwater Lighting

Direct TV Tracvision G4

ICOM SSB M700Pro

Data Marine Link 5000

120V Washing Machine

Spectra Watermaker 200C

Radar

Epirb

Dinghy & Davits

Enclosed Cockpit with Hardtop

Many Spares, Full Equipment and **MANY** recent upgrades.

## Accommodations

---

You enter down with high freeboard and high cockpit of the 54 Sailcruiser into a salon you could dance in. Headroom is excellent 7' plus. Here, the Sailmaster really shines with her airy headliner, beautiful teak and deck saloon windows. The sole is nice contrasting teak and holly. Starboard is a U-shaped settee with swivel chairs to port. This layout is smart and comfortable. Forwardmost in the bow is a centerline queen berth. Portside aft is a head with separate stall shower. The main mast is keel stepped. The teak is classic with the mitered trim, cambered edges, and not a square corner or speck of formica in sight. A two step up into the saloon and then two step down aft. The walkthrough is starboardside with the galley alongside and engine access through a door. Aftmost is an interesting aft facing centerline queen berth. A separate head and shower is portside. The shower steps way down into the bilge centerline so that she doubles as a tub. The walkthrough maintains excellent headroom. Aft in the master stateroom is a smaller door to the aftmost

---

## **cockpit.**

### **GALLEY**

Galley Fans

Teak & Holly flooring

Large 120v/ Engine Refrigeration

Large 120v/ Engine Top Open Freezer

Force 10 Propane Stove/Oven 3 burner

Large storage Cabinets

Under Counter Lighting

Sea Gull Water Filter

Stainless Steel Sink & Faucet

Granite Countertops

Custom Spice Drawer

Custom Dish Racks

Canister Racks

LED Lighting

### **MAIN SALON**

2 Barrel Chairs W/ Storage

Teak Bookshelves

U line Ice Maker

U Shaped, Blue Leather Seating for 6

2 12v Fans

Window Blinds

LED Reading Lights

LED Rope Accent lighting

LED Cabin Lighting

4 Glass Front Cabinets

2 12 V Fans

2 Hatches

9 Large Fixed Windows

Teak & Holly Flooring

Large teak Dining Table

2 Bars with storage

32" Hitachi Flat Screen TV

Direct TV receiver

Kenwood 200W Stereo

Pioneer Speakers

## **VIP STATEROOM**

Forward

Centerline Queen Berth

Ensuite Head with Stall Shower

Electric Jabsco Head

Teak & Holly Flooring

LED Lighting

Closet with 1 Hanging and 3 Drawers

5 Storage Drawers

Teak Bookshelves

Dressing Area with Full Mirror

2 Upper Storage Shelves

## **MASTER STATEROOM**

Aft

Queen Centerline Berth

Teak & Holly Flooring

12V Fan

LED Lighting

Ensuite Head W/ Stall Shower

Electric Jabsco Head

Bench Seat W/ Storage

Door to Rear Cockpit

LED Reading Lamps

## **GUEST STATEROOM**

2 Twin Bunks

Teak & Holly Flooring

LED Lighting

Closet with 1 Hanging and 3 Drawers

2 Upper Storage Shelves

2 12v Fans

9" Flatscreen TV w/ DVD

Settee with Storage

---

## Electronics & Navagation

---

Ritchie Compass

Standard Horizon VHF in Cockpit

Uniden VHF at Nav Station

Sat TV Trac Vision G4

Simrad Auto Pilot

SOS Epirb

Furuno Color GPS

Furuno 4KW Radar

OCOM SSB/ Fax Modem M700 Pro

Data Marine Link 5000

---

## Mechanical

---

Spectra Watermaker 200C

3 Raritan Strainers

All LED Lighting

Hydraulic Simrad Auto Pilot

3 - 16,000 BTU AC with Electronic Controls

12V Vetus Bow Thruster

Holding Tank

2 Rule 2000 Bilge Pumps

1 Rule 500 Bilger Pump

Manual Bilge Pump

Heart Link 2000 Inverter

3 Racor 500 Gal/Hr Fuel Filters

10 Gal 120V Water Heater

2 Battery Chargers

12V Fuel Pumps on all Racors

12V Reverso Oil Change Pump

2 Shower Sump Pumps

Too Many spare parts to list

---

## Electrical

---

9 KW Northern Lights Generator

12V Ships Power

120V x 50 Amp Shore Power / 60' 50A cord

Heart 3000 120V Inverter

1 Lifeline 4D AGM

4 Lifeline 8D AGM

4180 W Kyocera Solar Panels

50A Solar Controller

---

## Construction & Deck

---

The 54 Sailcruiser is classic Richard Lazzara design with a powerfully raked bow. The foredeck is flush and the 15'9" beam set slightly forward of amidships. At a beam over length ratio of 3.3, she is beamy but not extremely so by today's standards. The brightwork is above average with wide teak combings, a caprail, and handrails. Four highly polished chrome dorades shine her up. The cabintrunk rises up high with deck saloon windows and then another hard dodger and top for the main cockpit. The lines blend better than the Sailmaster series but still evoke classic lines. With her twin diesels, the Sailcruiser balances the sailing and motoring worlds. Underneath is a long fin keel, skegged rudder with only 4'10" draft.

Her equipment includes:

Fresh Water Washdown

4 LED Underwater Lighting

Ideal Vertical Windlass

120v Davit System

Deck Lights

Boarding Ladder

Custom Teak Bow Seating

Hammock & Hanger

Bruce 30kg anchor

4 LED Underwater Lights

Transom Shower

Fully Enclosed Cockpit

Removable cockpit Table

Hard Top

4 Custom Coming Boxes

Sunbrella Cushions

---

## Exclusions

Owner's personal belongings.

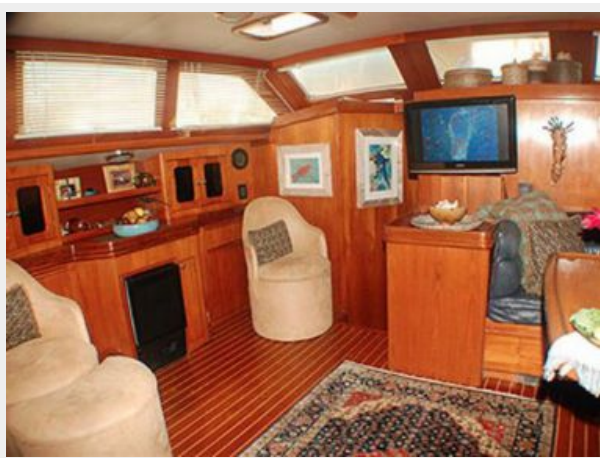
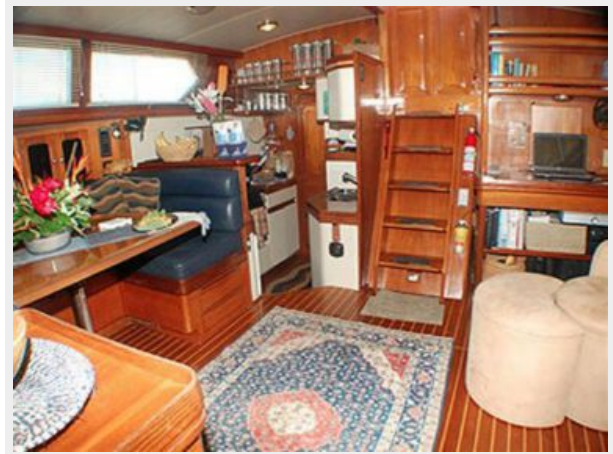
---

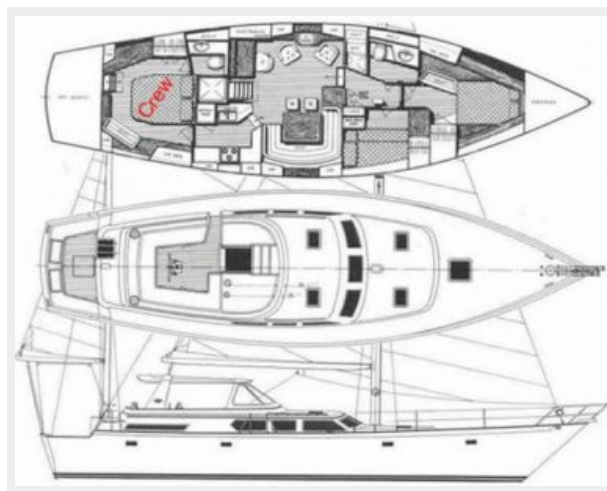
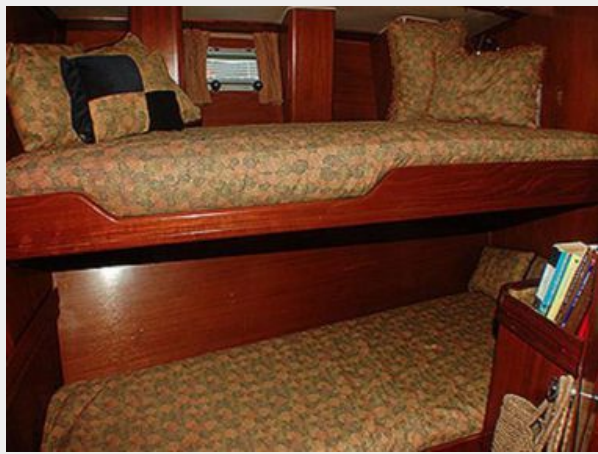
## Disclaimer

The Company offers the details of this vessel or yacht in good faith but cannot guarantee or warrant the accuracy of this information nor warrant the condition of the vessel. A buyer should instruct his representatives, agents, or his surveyors, to investigate such details as the buyer desires validated. This vessel or yacht is offered subject to prior sale, price change, or withdrawal without notice.

# PHOTOS







# CONTACTS

---

Andrey Shestakov, leading yacht broker of the sales department of Shestakov Yacht Sales Inc. Shestakov Yacht Sales Inc., the official representative of the Miami/Fort Lauderdale FL headquarters.

## Contact details

---

Email: **andrey@shestakovyachtsales.com**

Web: [shestakovyachtsales.com/en/](http://shestakovyachtsales.com/en/)

## Telephones

---

USA: **+1(954)274-4435**

## Office hours

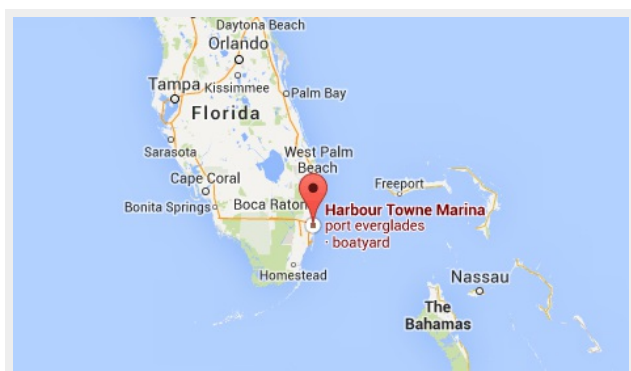
---

Monday – Saturday: **9:00 - 21:00 EDT**

Sunday: **closed**

## Address

---



Harbour Towne Marina, 850 NE 3rd St,  
STE 213, Dania, FL 33004