

ABOUT TIME — REGAL



Builder: REGAL

Year Built: 2005

Model: Cruiser

Price: PRICE ON APPLICATION

Location: United States

LOA: 42' 0" (12.80m)

Beam: 14' 0" (4.27m)

Max Draft: 2' 11" (0.89m)

Cruise Speed: 32 Kts. (37 MPH)

Max Speed: 35 Kts. (40 MPH)

Our experienced yacht broker, Andrey Shestakov, will help you choose and buy a yacht that best suits your needs **About Time — REGAL** from our catalogue. Presently, at Shestakov Yacht Sales Inc., we have a wide variety of yachts available on our sale's list. We also work in close contact with all the big yacht manufacturers from all over the world.

If you would like to buy a yacht **About Time — REGAL** or would like help answering any questions concerning purchasing, selling or chartering a yacht, please call **+1(954)274-4435**

TABLE OF CONTENTS

| | |
|-----------------------------------|----|
| TABLE OF CONTENTS | 2 |
| SPECIFICATIONS | 5 |
| Basic Information | 5 |
| Dimensions | 5 |
| Speed, Capacities and Weight | 5 |
| Accommodations | 5 |
| Hull and Deck Information | 5 |
| Engine Information | 6 |
| DETAILED INFORMATION | 7 |
| Manufacturer Provided Description | 7 |
| Exclusions | 7 |
| Disclaimer | 7 |
| PHOTOS | 8 |
| Port Side Bow View | 8 |
| Port Side Bow/Hull View | 8 |
| New Enclosure/Swim Platform | 8 |
| Hard Top | 8 |
| Port Side Entrance to Cockpit | 9 |
| UMT Davit | 9 |
| Starboard Side View | 9 |
| Starboard Side Walkway | 9 |
| Bow View | 10 |
| Windlass | 10 |
| Winshield | 10 |
| Enclosure 2 | 10 |
| Cockpit Galley | 10 |
| Cockpit Galley 2 | 10 |
| Cockpit Galley 3 | 11 |

| | |
|----------------------------------|----|
| Walkway Cockpit to Swim Platform | 11 |
| Cockpit Seating | 11 |
| Cockpit Shower | 11 |
| Cockpit Table/Seating | 11 |
| Helm Station | 11 |
| Helm Station 2 | 12 |
| Helm Station 3 | 12 |
| Salon Entrance | 12 |
| Captains Double Wide Seat | 12 |
| Salon Stairs | 13 |
| Galley | 13 |
| Galley 2 | 13 |
| Galley Fridge/Freezer | 13 |
| Galley Microwave | 13 |
| Power Panel | 13 |
| Salon TV and Surround Sound | 14 |
| Salon Entertainment System | 14 |
| Master Stateroom | 14 |
| Salon Table and Seating | 14 |
| Master Stateroom TV | 15 |
| Master Stateroom 2 | 15 |
| Master Head/Shower | 15 |
| Master Head 2 | 15 |
| 2nd Stateroom Entrance | 16 |
| 2nd Stateroom 2 | 16 |
| 2nd Stateroom 3 | 16 |
| 2nd Stateroom TV | 16 |
| Washer/Dryer Unit | 17 |
| 2nd Stateroom Head | 17 |

| | |
|--------------------------------|-----------|
| Salon View to Master Stateroom | 17 |
| Engine Room Battery Bank | 17 |
| Starboard Engine | 18 |
| Port Engine | 18 |
| Glendinning | 18 |
| Layout | 18 |
| Layout 2 | 18 |
| CONTACTS | 19 |
| Contact details | 19 |
| Telephones | 19 |
| Office hours | 19 |
| Address | 19 |

SPECIFICATIONS

Basic Information

Category: Cruiser

Sub Category: Express

Model Year: 2005

Year Built: 2005

Country: United States

Dimensions

LOA: 42' 0" (12.80m)

Beam: 14' 0" (4.27m)

Max Draft: 2' 11" (0.89m)

Clearance: 10' 7" (3.23m)

MFG Length: 44' 4" (13.51m)

Speed, Capacities and Weight

Cruise Speed: 32 Kts. (37 MPH)

Max Speed: 35 Kts. (40 MPH)

Displacement: 22000 Pounds

Water Capacity: 101 Gallons

Holding Tank: 48 Gallons

Fuel Capacity: 328 Gallons

Accommodations

Total Cabins: 2

Total Berths: 3

Total Heads: 2

Hull and Deck Information

Hull Material: Fiberglass

Engine Information

Engines: 2

Manufacturer: Volvo Penta

Model: TAMD75EDC

Fuel Type: Diesel

DETAILED INFORMATION

Manufacturer Provided Description

Largest and most awe inspiring of the Regal fleet, the Regal Commodore 4260 is breathtaking just standing still and an equally beautiful performer offshore. With the ability to cruise comfortably at 25 knots, she handles widely varying sea conditions with a grace and ease that's rare for a yacht so large and luxurious. On deck, a large U-shaped seating arrangement faces the helm and driver. The helm is extra wide for two-person seating, and the aft cockpit features facing bench seats. Alternate engine access is gained via a walk-down ladder beneath the aft bench seat. Transom storage provides plenty of room for fenders, dock lines and cleaning supplies, and the cargo nets are standard. Below, the forward stateroom offers an oversized berth with a real innerspring mattress that is hinged for easy access to a large storage area beneath. There are also two full-size storage drawers and a large cedar-lined hanging locker. A built-in TV / VCR is on the starboard side. Above the berth is a recessed bookshelf. Both staterooms have hardwood pocket doors, not curtains, for real privacy. And both have their own private heads. The wide open main salon of the 4260 features a nine-foot LeatherCrest sofa that is deep and comfortable. The stereo is advanced Kenwood design with Bose speakers. The beautifully proportioned galley features a large, curved expanse of Corian counter surface with plenty of easy-access, roll-out draws and bin storage below. A side-by-side refrigerator / freezer, microwave, coffee maker and hidden two-burner stove are all standard. Additional storage and a TV / VCR that can be viewed from the salon area are above. The 4260 galley even provides dedicated storage for the dishes, which are standard.

Exclusions

Owner's personal belongings.

Disclaimer

The Company offers the details of this vessel or yacht in good faith but cannot guarantee or warrant the accuracy of this information nor warrant the condition of the vessel. A buyer should instruct his representatives, agents, or his surveyors, to investigate such details as the buyer desires validated. This vessel or yacht is offered subject to prior sale, price change, or withdrawal without notice.

PHOTOS

Port Side Bow View



Port Side Bow/Hull View



New Enclosure/Swim Platform



Hard Top



Port Side Entrance to Cockpit



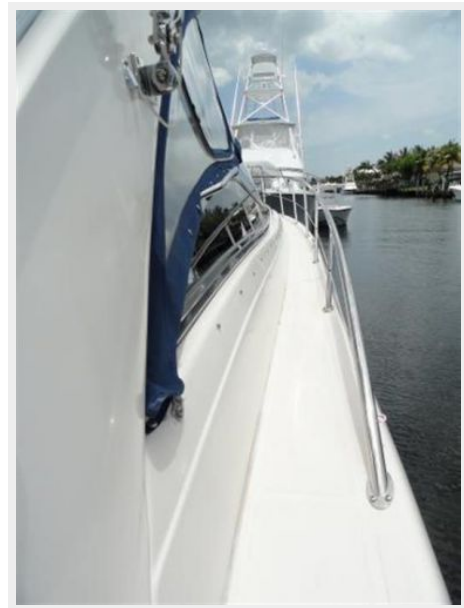
UMT Davit



Starboard Side View



Starboard Side Walkway



Bow View



Windlass



Winshield



Enclosure 2



Cockpit Galley



Cockpit Galley 2



Cockpit Galley 3



Walkway Cockpit to Swim Platform



Cockpit Seating



Cockpit Shower



Cockpit Table/Seating



Helm Station



Helm Station 2



Helm Station 3



Salon Entrance



Captains Double Wide Seat



Salon Stairs



Galley



Galley 2



Galley Fridge/Freezer



Galley Microwave



Power Panel



Salon Entertainment System



Salon TV and Surround Sound



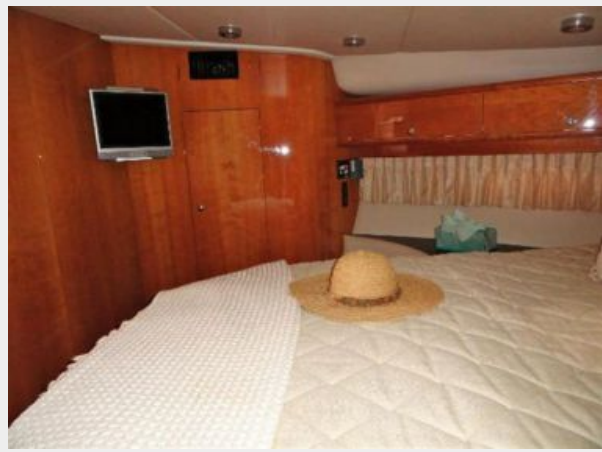
Salon Table and Seating



Master Stateroom



Master Stateroom 2



Master Stateroom TV



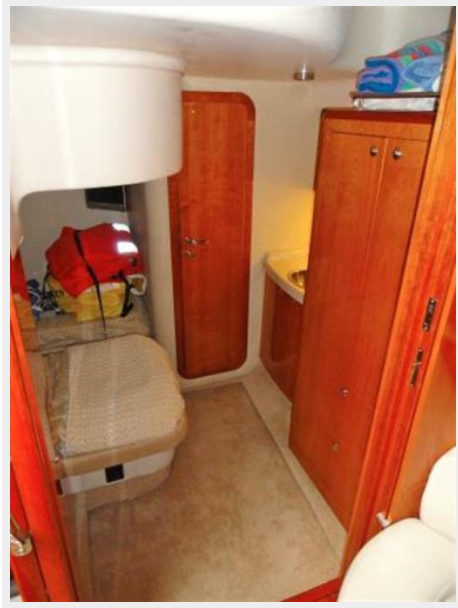
Master Head/Shower



Master Head 2



2nd Stateroom Entrance



2nd Stateroom 2



2nd Stateroom 3



2nd Stateroom TV



Washer/Dryer Unit



2nd Stateroom Head



Salon View to Master Stateroom



Engine Room Battery Bank



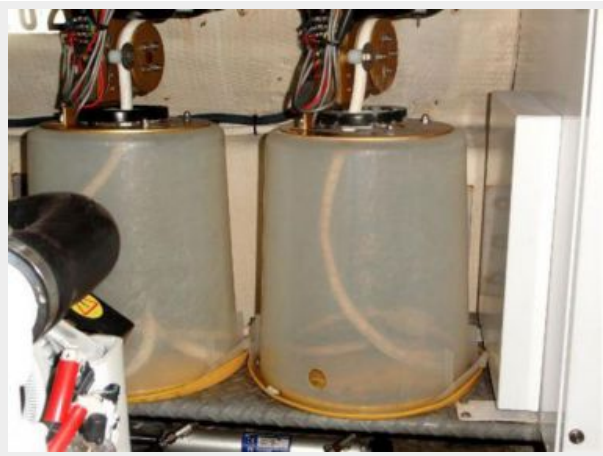
Starboard Engine



Port Engine



Glendinning



Layout



Layout 2



CONTACTS

Andrey Shestakov, leading yacht broker of the sales department of Shestakov Yacht Sales Inc. Shestakov Yacht Sales Inc., the official representative of the Miami/Fort Lauderdale FL headquarters.

Contact details

Email: andrey@shestakovyachtsales.com

Web: shestakovyachtsales.com/en/

Telephones

USA: +1(954)274-4435

Office hours

Monday – Saturday: **9:00 - 21:00** EDT

Sunday: **closed**

Address



Harbour Towne Marina, 850 NE 3rd St,
STE 213, Dania, FL 33004