

CELTIC — OCEAN ALEXANDER



Судостроитель: OCEAN ALEXANDER

Год постройки: 2008

Модель: Моторная яхта

Цена: **ЦЕНА ЯХТЫ ПО ЗАПРОСУ**

Местонахождение: United States

Длина общая: 64' 0" (19.51m)

Ширина: 17' 6" (5.33m)

Макс. осадка: 4' 8" (1.42m)

Крейс. скорость: 21 Kts. (24 MPH)

Макс. скорость: 24 Kts. (28 MPH)

Купить **CELTIC — OCEAN ALEXANDER** а также выбрать подходящую вам яхту из нашего каталога яхт вам поможет опытный яхтенный брокер Андрей Шестаков. На сегодняшний день компания **Shestakov Yacht Sales Inc.** имеет большое количество яхт в собственном списке продаж, а также тесно сотрудничает со всеми крупными яхтенными производителями по всему миру.

Для того чтобы купить яхту **CELTIC — OCEAN ALEXANDER** а также проконсультироваться по любому вопросу связанному с покупкой, продажей, чартером яхт позвоните по телефону **+7(918)465-66-44**.

ОГЛАВЛЕНИЕ

ОГЛАВЛЕНИЕ	2
ХАРАКТЕРИСТИКИ	5
Обзор	5
Основная информация	5
Размеры	5
Скорость, вместимость и масса	6
Размещение	6
Корпус и палуба	6
Информация о двигателе	6
ПОДРОБНОЕ ОПИСАНИЕ	7
Overview	7
Accommodations and Interior	7
Upgraded Interior Decor and Accommodations	7
Salon	8
Galley	8
Master Stateroom	8
Forward Guest Stateroom	9
Heads	9
Pilothouse	10
Pilothouse Electronics	10
Fly Bridge Electronics	11
Control and Navigation	11
Electrical System	11
Exterior Hardware and Fittings	12
Hull, Superstructure and Deck	12
Upgraded Luxury Package	13
Upgraded Mechanical Package	14
Upgraded Hydraulic Package	14

Upgraded Boat Deck Extension Package	14
Remarks	15
Исключения	15
Отказ от ответственности	15
ФОТОГРАФИИ	16
Interior Layout	16
Exterior Layout	16
Salon Hi Lo Table	16
Salon	16
Salon Forward	16
Salon Wet Bar	16
Salon Wet Bar	17
Galley View	17
Galley Dinette	17
Salon Looking Aft	17
Salon	17
Master Stateroom Storage	17
Stairs to Flybridge	18
Master Stateroom TV and Storage	18
VIP Stateroom	18
Master Sink	18
VIP Head & Shower	19
Port Guest Stateroom	19
Stairs to Lower	19
Pilothouse	19
Aft deck BBQ & Sink	19
Walk-in Engine Room Access	19
Helm Station	20
Flybridge	20

Flybridge Seating	20
Sunpad	20
PTO & Oil Change System	21
Engine Room Generator	21
Starboard C-18 CAT	21
Engine Room	21
Upgraded Hard Coated Exhaust	22
Swim Platform	22
Bow Profile	22
Running	22
КОНТАКТЫ	23
Контактная информация	23
Телефоны	23
Время работы	23
Адрес	23

ХАРАКТЕРИСТИКИ

Обзор

"Celtic" is a popular Ocean Alexander Pilothouse Motor Yacht designed by Ed Monk and owned by a knowledgeable yachtsman. Due to the owner's experience, "Celtic" is maintained with an open check book at all levels. Many custom features were added during her build like upgraded HDTV & Sat TV true out, teak plank and ebony pilothouse and galley floors instead of laminate, Teak FB table, and extended Caterpillar C-18 warranties will give her new owner the added security through **JULY 2016**. Prop Speed coating on all running gear 2014. Her dual 50 Amp shore power supplies, dual generators, Charles ISO booster gives the owner flexibility and redundancy. Her engines were serviced solely by authorized Caterpillar Service Centers as required. Exhaust systems were replaced and upgraded with stainless steel and hard-coated by DeAngelo Marine Exhaust in 2011. Check out her detailed specifications and compare!

Motivated.

Основная информация

Тип судна: Моторная яхта

Подкатегория: Flybridge

Модельный год: 2008

Год постройки: 2008

Страна: United States

Верх: Hardtop

Открытая палуба мостика: Да

Размеры

Длина общая: 64' 0" (19.51m)

Ширина: 17' 6" (5.33m)

Макс. осадка: 4' 8" (1.42m)

Длина привального бруса: 69' 3"
(21.11m)

Скорость, вместимость и масса

Крейс. скорость: 21 Kts. (24 MPH)

Макс. скорость: 24 Kts. (28 MPH)

Водоизмещение: 75300 Pounds

Вместимость воды: 300 Gallons

Вместимость сточного бака: 100 Gallons **Объем топливного бака:** 1500 Gallons

Размещение

Всего кают: 3

Всего коек: 6

Спальные места: 6

Всего ком. состава: 2

Корпус и палуба

Материал корпуса: Fiberglass

Комплектация корпуса: Semi-Displacement

Цвет корпуса: White

Дизайнер корпуса: Ed Monk, Jr.

Дизайнер экстерьера: Ed Monk, Jr.

Дизайнер интерьера: Ed Monk, Jr.

Информация о двигателе

Двигатели: 2

Производитель: Caterpillar

Модель: C-18

Тип двигателя: Inboard

Тип топлива: Diesel

ПОДРОБНОЕ ОПИСАНИЕ

Overview

- Beam: 17' 6"
- Max Draft: 4' 8"
- Displacement: 75,300 lbs
- Cruise Speed: 21 knots
- Max Speed: 24 knots
- Engines: Caterpillar
- Engine Model: C-18
- HP: 1000
- Engine Hours: 1438
- Fuel Tank: 1500 Gallons
- Water Tank: 300 Gallons
- Holding Tank: 100 Gallons

Accommodations and Interior

- Teak paneling and cabinetry
- European style door handle
- Round top corners cabin, entrance doors
- Push button handles for drawers and cupboards
- Hidden hinges on cabinet doors
- Cruisair Central air conditioner with ECU control below 16K; (5) sets
- Innerspring mattresses for berths
- Painted flooring prepared for carpet, except for select teak plank flooring with ebony border in pilothouse, galley, and heads
- 2" Bullnose cabinet tops
- Hi-gloss varnish for interior finish
- Stainless steel hardware
- Hanging lockers with dual locking mechanism
- Flip up berth for storage
- Burl deco striping undercounter in salon and staterooms
- Removable headliner on entire boat
- Cornice boxes; all interior window frames with rounded corners

Upgraded Interior Decor and Accommodations

- Green Butterfly granite floors in both heads
- Electric high-low table in salon

- Wet bar portside cabinet in salon, with custom hand blown glass sink and custom cabinetry with cut out for glass storage there is a U-line ice maker and 15" wine cooler with solid panel door

Salon

- High-low table with sliders and burl wood top
- 24V Halogen lights
- Settees with ultraleather fabrics
- Cornice boxes with 5" round radius
- Loose end table
- DVD/CD Audio stereo and video system
- Afromosia valence board
- Built in settee in salon with hydraulic ram opening and storage inside
- Plasma screen TV setup on wall
- Removable ceiling panels
- Upgraded wooden window shades

Galley

- Oversized granite countertops
- Teak panel and cabinetry
- Storage cabinets and drawers
- Franke double sink with Grohe faucet
- Tube light under counter
- Overhead dish locker aft
- Teak plank flooring with ebony corner
- Overhead dish locker with access on both sides
- 36" Amana Easy Reach refrigerator
- 27" Gaggenau electric cook top
- Overhead GE profile Advantium microwave convection oven
- GFI 110V AC outlet
- Drawer type shelves in large cabinet
- 18" Miele dishwasher
- 12" Broan trash compactor

Master Stateroom

- Queen sized berth with innerspring mattress
- Burlwood headboard mirror wall
- (2) Night stands

- Bureau with chest of drawers
- Private head with stall shower on port with pocket door
- Dressing mirror
- Oval port lights
- Safe in hanging locker
- (2) Cedar-lined full height hanging lockers with auto lighting
- Tube light under bunk
- 24V Halogen lights
- Master port lights
- Sony DVD/CD Audio stereo and video system
- Custom wall molding, ceiling, and floor
- Maytag 2400 A WW stacked washer/dryer
- TV above buffet
- 25" Sony LCD HD or 25" Panasonic LCD HDTV Mount on wall
- Deco ceiling, burlwood pillars on aft wall

Forward Guest Stateroom

- Queen sized berth with innerspring mattress
- Drawers under bed
- Dressing mirror
- 24V Halogen lights
- Stainless steel oval port light with privacy screen
- Head with stall shower
- (2) Cedar-lined hanging lockers with automatic lighting
- Tube light under bunk
- Chest of drawers
- (2) Port lights
- Sony DVD/CD Audio stereo and video system
- 22" Sony LCD HDTV

Heads

- Teak walls & cabinets
- Granite countertops
- China sink
- Grohe faucets for sink and shower
- Waterproof draperies
- Mirrored sliding cabinet door under head port light
- Mirrored door on medicine cabinet
- Teak plank flooring with ebony border
- Tecma heads

- Vent lower
- Fiberglass seamless stall shower with one piece glass door "granite"
- Stainless steel oval port light with screen
- GFI 110V AC Outlet
- 24V Light
- Keuco bathroom fixtures

Pilothouse

- Pilothouse floor select teak plank with ebony
- U-shaped dinette with chart drawer under
- Sunken and extended dash with instrumentation
- Burl wood top table with storage cabinet under
- Windshield defrosters
- Lighted handrail to staterooms
- Ritchie compass 5"
- 24V Halogen lights
- (2) Water tight doors to side deck
- Black Stidd helm seat
- See through stainless steel post stair to bridge
- Cornice box
- Custom designed pilot station with black Ultraleather and teak accents

Pilothouse Electronics

- Dual Furuno 48" array
- (3) 17" Ambient Nav LCD monitors
- (2) Furuno #1920 CBB
- Furuno #1944 CBB Nav
- Furuno RD30
- VHF PS2000 with Shakespeare Galaxy 14' Antenna with laydown capabilities
- Marinized computer
- 4-Station phone system, Charles or Panasonic
- Simrad AP25
- Simrad IS15
- Seatel Coastal 24 Americas satellite TV system
- Seatel 27" Radome assembly to provide dome symmetry
- Seatel HDTV Converter kit
- (5) Seatel Direct TV HD Satellite receivers
- Furuno blackbox waas/GPS receiver
- Video switching system for Cybex CTV
- NavNet VX2 BBWX1

- ACR RCL 11D-24V Remote control searchlight
- 26" Sunbrite out door waterproof TV on aft deck
- Upgraded wind/weather gauge
- Underwater stern camera

Fly Bridge Electronics

- (2) 17" Ambient LCD monitors
- (2) Furuno #1920 CBB
- Furuno #1944 CBB Nav
- Furuno Rd30
- VHF PS2000 with Shakespeare Galaxy 14' Antenna with laydown capabilities
- Simrad AP25
- Simrad IS15
- Furuno Blackbox waas/GPS receiver
- Furuno BBFF Dual Freq BB sounder
- Furuno B260 Th 1 KW transducer
- Waterproof CD/FM radio with satellite capabilities Sirius

Control and Navigation

- (2) Control stations; flybridge and pilothouse, and complete engine instrumentation with lighted switches
- Third control in cockpit - engine and thruster
- International navigation lights
- Engine hour meter
- Hydraulic steering system
- Engine alarm system; audio, oil and temperature
- Kalenberg double air horns
- Electric engine controls
- Ritchie 5" Compass (lighted) in flybridge & pilothouse

Electrical System

- 12" Broan trash compactor
- 12" Miele electric barbeque in cockpit
- 24" Gaggenau electric oven
- 15" U-line Wine cooler with solid panel door
- Chart light beside dash
- Proportional bow and stern thruster control, each station
- Second stabilizer monitor on flybridge

- (3) Underwater lights
- Additional 50 AMP shore power in transom with Glendenning with iso boost and AB select switch
- Upgraded 3-Zone stereo with (2) RF remotes, useable anywhere on yacht

Exterior Hardware and Fittings

- Stainless steel hardware
- 2" Elliptical stainless steel handrails and stanchions, main deck
- 1-1/2" Rails on fiberglass
- Stainless steel cleats & hawse holes
- Windlass, Muir VRC3500C
- Trim tabs
- Sea and fresh water wash down, cockpit
- Remote operated lockable cockpit hatch
- Stainless steel oval port lights
- Stainless steel swivel anchor light bracket
- 200' BBB 3/8" Anchor locker
- Stainless steel rudders
- Bronze struts with cutlass bearing
- Propeller shafts, Aquatech22HS
- Bronze through hull fittings
- Zincs on rudders, shafts, and trim tabs
- Teak steering wheel inside and stainless steel on fiberglass
- High performance computer-designed and machines class "S" propellers
- Teak bow and stern shafts
- Scuppers, side cockpit
- Stainless steel handrails on back transom
- Aft deck shower, dock side water and TV/phone inlet
- Stainless steel door cockpit to salon (slides starboard)
- Pantograph windshield wipers and washer with intermittent functions
- (2) White Stidd helm seats on flybridge
- Teak cockpit coaming
- Heavy duty corner cleats at both sides of Euro transom
- Water tight doors at pilothouse
- Hardtop with wing mast
- Removable 2 1/2" rails on swim platform
- Safety line in flybridge and front rails

Hull, Superstructure and Deck

- Hand-laid gel-coated fiberglass hull

- AL 600 core on hull sides
- Solid fiberglass hull bottom
- AL 600 core on superstructure
- Removable swimming ladder
- White non-skid fiberglass decks
- Teak deck in cockpit with screw-less and overlapping design
- Port and starboard boarding gates
- White vinyl rub rail stainless steel insert
- Lexan windscreen on fiberglass
- Interprotect epoxy based antifouling/anti-osmosis system
- Gates in elliptical stainless steel handrail, port and starboard
- Transom doors
- Storage locker at port side wing
- Fiberglass bow pulpit with stainless steel anchor roller
- U-shaped seating on flybridge with teak table
- Sink and U-line refrigerator icemaker with stainless steel grab rail
- Hardtop
- Frameless, tempered dark tinted window glass
- Chain locker in bow with hinged access hatches
- Teak swim platform with Euro transom
- Windows in salon, all fixed and flush
- 24V Deck lights
- Ventilation hatch forward trunk top
- 3M Thinsulate system for sound and temperature
- Fiberglass staircase from cockpit to flybridge
- Sliding door with fixed window, bridge to pilothouse
- Deck locker in cockpit with window above
- Engine room access; walk-in fiberglass stairs from cockpit locker
- Sound insulation on ceiling in lazarette
- Carbon reinforced structural fiberglass stingers filled with high density foam
- Cigarette lighter DC outlet on fiberglass
- Enlarged 28" cockpit hatch
- Reinforced collision bulkhead
- Stainless steel plow anchor, 80 lbs
- Sat TV outlet right of sink on aft deck
- GFI Electric outlet right of sink on aft deck
- 26" Outdoor Sunbrite TV on aft deck

Upgraded Luxury Package

- Double bull nose granite countertops and splash boards for galley and heads
- Granite shower floor, shower seat, and wall trim
- Mirror headboard for forward stateroom

- Fabric headboard in other staterooms
- Central Vacuum system
- Sunbrella fabric on outside cushions
- Cellular amplifier
- In Salon: AM/FM surround sound receiver, DVD player, high definition DSS satellite receiver, line voltage regulator, memory card picture viewer, universal remote control and IR repeating system, all equipment rack mounted, 42" XBR LCD HD Sony TV
- Surround sound system and 22" HDTV in master stateroom
- IR Repeater eye in salon, master, forward, and guest staterooms
- Tank tender for (4) tanks
- 22" Sony LCD HDTV in VIP forward and guest staterooms
- Stereo on flybridge with (2) speakers mounted in hardtop on flybridge
- Seatel Tracphone F55, Dummy dome on radar mast/wind put GPS inside
- Dimmer switches for all salon/galley/msater/pilothouse/VIP stateroom

Upgraded Mechanical Package

- Delta T Engine room positive pressure system
- Power steering system
- Dual Racor filters with V-valves
- Fire extinguisher system with engine shutdown feature
- Steelhead SM 2000R davit, hydraulic boom, rotation and extension
- Fuel polishing system
- Oil changing system for both engines and genset
- (2) Iso boost with transformer function
- Blue Sea digital multi function meter
- 600 Gallon Water Maker, Inc. water maker and electric outlet with GFI
- Two 20 kw Northern Lights generators w/1389 hrs.
- Halon system for lazarette
- Stainless steel drip pan under engines
- Seagull water purifier
- Water Maker Inc, Fully automatic with back flush

Upgraded Hydraulic Package

- Hydraulic Keypower stabilizer
- Hydraulic bow thruster (25HP) and stern (15HP) in lieu of standard electric bow thruster
- Hydraulic windlass

Upgraded Boat Deck Extension Package

- Extension of boat deck to transom
- Built in fiberglass seats w/storage in cockpit
- Swing out teak table

Remarks

"Celtic" is a popular Ocean Alexander Pilothouse Motor Yacht designed by Ed Monk and owned by a knowledgeable yachtsman. Due to the owner's experience, "Celtic Charm" is maintained with an open check book at all levels. Many custom features were added during her build like upgraded HDTV & Sat TV true out, teak plank and ebony pilothouse and galley floors instead of laminate, Teak FB table, and extended Caterpillar C-18 warranties will give her new owner the added security through **SEPTEMBER 2016**. Her dual 50 Amp shore power supplies, dual generators, Charles ISO booster gives the owner flexibility and redundancy. Her engines were serviced solely by authorized Caterpillar Service Centers as required. Exhaust systems were replaced and upgraded with stainless steel and hard-coated by DeAngelo Marine Exhaust in 2011. Check out her detailed specifications and compare.

Исключения

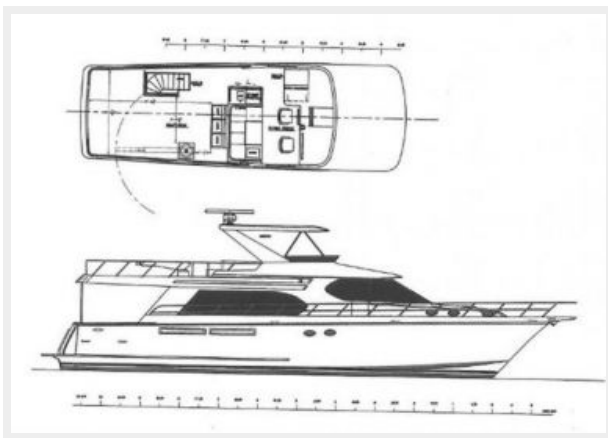
При продаже яхты исключаются личные вещи владельца.

Отказ от ответственности

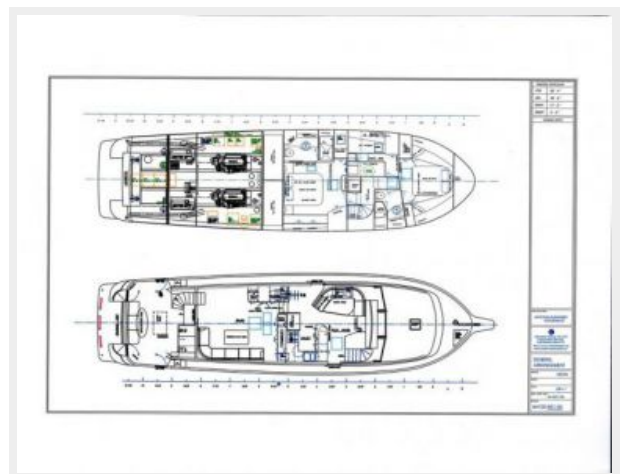
Компания предоставляет описание судна или яхты добросовестно, но не может гарантировать точность этой информации, а также не ручается за техническое состояние. Покупатель должен проинструктировать своих агентов или оценщиков исследовать представленную информацию более подробно, по собственному желанию. Продажа судна или яхты, изменение цены или снятие с продажи будет происходить без предварительного уведомления.

ФОТОГРАФИИ

Exterior Layout



Interior Layout



Salon Hi Lo Table



Salon



Salon Wet Bar



Salon Forward



Salon Wet Bar



Galley View



Galley Dinette



Salon Looking Aft



Salon



Master Stateroom Storage



Stairs to Flybridge



Master Stateroom TV and Storage



VIP Stateroom



Master Sink



VIP Head & Shower



Port Guest Stateroom



Stairs to Lower



Pilothouse



Aft deck BBQ & Sink



Walk-in Engine Room Access



Flybridge



Helm Station



Flybridge Seating



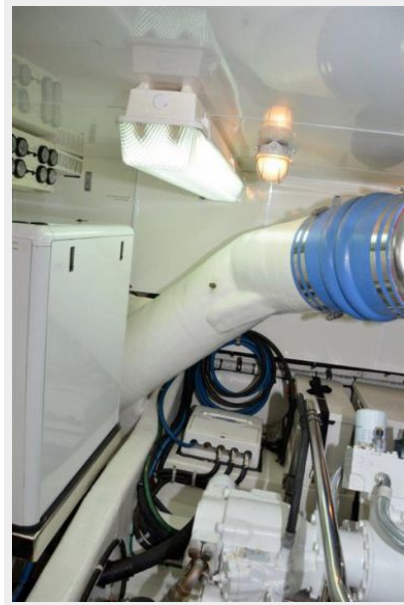
Sunpad



Engine Room Generator



PTO & Oil Change System



Engine Room



Starboard C-18 CAT



Upgraded Hard Coated Exhaust



Swim Platform



Bow Profile



Running



КОНТАКТЫ

Андрей Шестаков (Andrey Shestakov) – ведущий яхтенный брокер отдела продаж яхт и судов компании Shestakov Yacht Sales Inc. Официальный представитель Shestakov Yacht Sales Inc. для русскоговорящих клиентов в центральном офисе компании в Майами/Форт Лодердейл/Флорида/США.

Контактная информация

Email: andrey@shestakovyachtsales.com

Web: shestakovyachtsales.com

Телефоны

Краснодарский край: **+7(918)465-66-44**

США, Майами, Флорида: **+1(954)274-4435**

Время работы

Понедельник – Суббота: **9:00 - 21:00**
EDT

Воскресенье: **Закрито**

Адрес



Harbour Towne Marina, 850 NE 3rd St,
STE 213, Dania, FL 33004