

## EXPO CLIPPER — CHESAPEAKE CUSTOM



**Builder:** Chesapeake Custom

**LOA:** 112' 0" (34.14m)

**Year Built:** 1983

**Model:** Commercial Vessel

**Price:** PRICE ON APPLICATION

**Location:** United States

Our experienced yacht broker, Andrey Shestakov, will help you choose and buy a yacht that best suits your needs **Expo Clipper — Chesapeake Custom** from our catalogue. Presently, at Shestakov Yacht Sales Inc., we have a wide variety of yachts available on our sale's list. We also work in close contact with all the big yacht manufacturers from all over the world.

If you would like to buy a yacht **Expo Clipper — Chesapeake Custom** or would like help answering any questions concerning purchasing, selling or chartering a yacht, please call **+1(954)274-4435**

# TABLE OF CONTENTS

---

TABLE OF CONTENTS	2
SPECIFICATIONS	4
Overview	4
Basic Information	4
Dimensions	4
Accommodations	5
Hull and Deck Information	5
Engine Information	5
DETAILED INFORMATION	6
Galley	6
Electrical	6
Additional Information	7
Safety Equipment	7
Pilothouse	7
Electronics	8
Inside Equipment	9
Exclusions	9
Disclaimer	9
PHOTOS	10
Twin bunks	10
Top deck	10
Side deck	10
Bow deck	10
Bridge	11
Engine room	11
Galley	11
Galley stove	11
Engine Room	11

---

Engine room	11
Port side	12
Hallway	12
Head	12
Bridge	12
Dinning room	12
Engine	13
Tool crib	13
AC units	13
Wsher dryer	13
<b>CONTACTS</b>	<b>14</b>
Contact details	14
Telephones	14
Office hours	14
Address	14

---

# SPECIFICATIONS

---

## Overview

---

THIS IS A NEW LISTING - MORE INFORMATION COMING SOON.

This is a out island developers dream come true.

This vessel can comfortably house, feed and entertain 46 persons in comfort in a remote location.

The vessel was purpose built to be on station on a job site in a remote location weather it be a movie set or the development of an exclusive out island resort. With a draft of only 7 feet she is perfect for the Bahamas.

She has 22 staterooms each with en suite head/shower and direct TV. The cabin layout is 18 with 2 bunks, two with 4 bunks and two with single berths.

A full commercial galley and restaurant seating area provides for crew nourishment.

This vessel is SOLAS compliant and has a current COI valid until August 2017

Renovations in 2007 with **new electrical system, HVAC and interior paint**. Also in **2007 the main generator was replaced with a 100 KW Onan powered by John Deere** with sound shield. There is a **USCG approved Orca I sewage treatment system on board**. A **complete commercial galley** with stainless appliances and work spaces. She could be used for over night passenger vessel to the Keys or Northeast, Maritime training vessel or even research. **Excellent Financing possibility's**.

This boat is not Bahamas Duty Paid and not for sale to a Bahamian resident without the payment of Bahamas import duty.

---

## Basic Information

---

**Category:** Commercial Vessel

**Model Year:** 1983

**Year Built:** 1983

**Country:** United States

---

## Dimensions

---

**LOA:** 112' 0" (34.14m)

---

## Accommodations

---

**Total Cabins:** 22

---

## Hull and Deck Information

---

**Hull Material:** Steel

---

## Engine Information

---

**Manufacturer:** Detroit Diesel

---

## DETAILED INFORMATION

---

### Galley

---

- ◆ Delafield model 600 XL Refrigerator
- ◆ Delafield model 600 XL Freezer
- ◆ Eva - 2 Commercial Dishwasher
- ◆ APW-Wyott Double Deep Fryer
- ◆ APW-Wyott Flattop Griddle
- ◆ 2 Champion Two Burner model Shep Hot Plates
- ◆ Kenmore Microwave Oven
- ◆ American Proline Hot Water Heater
- ◆ Manitowoc model B420 Ice Maker
- ◆ Ansul model PCL46C Fire Suppression System
- ◆ Assorted Dishes, Utensils, Pots & Pans

### Electrical

---

100 KW Onan Generator Powered by a John Deere Marine Diesel (New in 2007) with Sound Shield.

- ◆ 88 KW Lima Generator Powered by a Cummings Marine Diesel Model 440SSL0811
- ◆ Ship to Shore Power Switch
- ◆ Battery Isolation Switch
- ◆ 120 VAC VDC Lighting
- ◆ 120 VAC Duplex Outlets
- ◆ Two 12 VDC wired in Series for each Engine
- ◆ One 12 VDC 8D Heavy Duty Battery for Generators

- ◆ Internationally Approved Navigation Lights

---

## Additional Information

---

1/4" Inch Steel Plate Hull

- ◆ 3/16" and 1/8" Steel Plate on Deck House
- ◆ Deck House is Insulated
- ◆ 7 Watertight Compartments Formed by 6 Transverse Bulkheads

---

## Safety Equipment

---

- ◆ 165 Type I Adult PFD
- ◆ 16 Type I Child Size PFD
- ◆ 4 Twenty Five Person Life Float Buoyant Flotation Devices
- ◆ Three 24" Life Rings, 1 with Line & Light
- ◆ Northern Airborne Technologies EPIRB 406 MHz
- ◆ One Illuminated Float Light
- ◆ Pyrotechnic Distress Signals
- ◆ Two Fire Stations with Two 2" UL Approved Rubber Lined Hoses
- ◆ Fire Ax
- ◆ A 175 lb & 200 lb Danforth Anchors with 300' of Rode

---

## Pilothouse

---

Engine instrumentation includes Tach., Ammeters, Oil Pressure, Water Temp., Gear Oil Pressure

- ◆ Simrad model AP50 Autopilot
- ◆ Furuno model Nav. Net XX2 Radar with GPS, Chart Plotter & Depth Sounder

- ◆ 2 Icom model ICM 604/304 VHF/FM Marine Radios
- ◆ Ritchie Compass
- ◆ Wagner model 150 Rudder Indicator
- ◆ Speco model PBM-120 Amplifier & Public Address System with Internal & External Speakers
- ◆ Pneumatic Clutch Throttle Controls
- ◆ Wagner Hydraulic Steering System
- ◆ Kahlenberg model S-2 Horn
- ◆ Fog Bell
- ◆ Perko Lever Controlled Searchlight
- ◆ Windshield Wipers

## Electronics

---

Engine instrumentation includes Tach., Ammeters, Oil Pressure, Water Temp., Gear Oil Pressure

- ◆ Simrad model AP50 Autopilot
- ◆ Furuno model Nav. Net XX2 Radar with GPS, Chart Plotter & Depth Sounder
- ◆ 2 Icom model ICM 604/304 VHF/FM Marine Radios
- ◆ Ritchie Compass
- ◆ Wagner model 150 Rudder Indicator
- ◆ Speco model PBM-120 Amplifier & Public Address System with Internal & External Speakers
- ◆ Pneumatic Clutch Throttle Controls
- ◆ Wagner Hydraulic Steering System
- ◆ Kahlenberg model S-2 Horn
- ◆ Fog Bell
- ◆ Perko Lever Controlled Searchlight
- ◆ Windshield Wipers



---

## Inside Equipment

---

- Dishwasher
- Washing Machine
- Electric Bilge Pump
- Oven
- Manual Bilge Pump
- Microwave Oven
- Air Compressor
- Marine Head
- Air Conditioning
- Electric Head
- Heating
- Hot Water
- Refrigerator

---

## Exclusions

---

Owner's personal belongings.

---

## Disclaimer

---

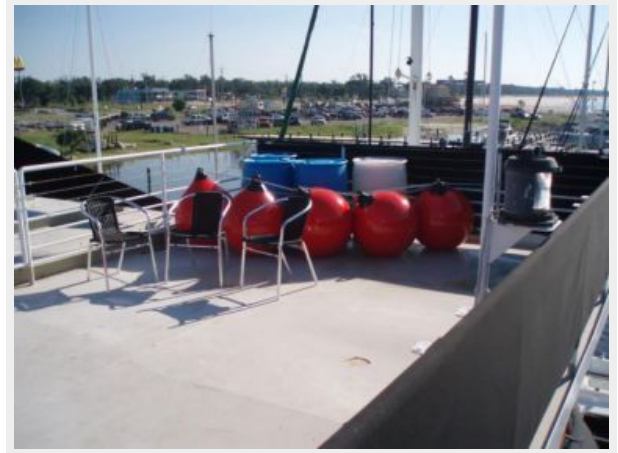
The Company offers the details of this vessel or yacht in good faith but cannot guarantee or warrant the accuracy of this information nor warrant the condition of the vessel. A buyer should instruct his representatives, agents, or his surveyors, to investigate such details as the buyer desires validated. This vessel or yacht is offered subject to prior sale, price change, or withdrawal without notice.

# PHOTOS

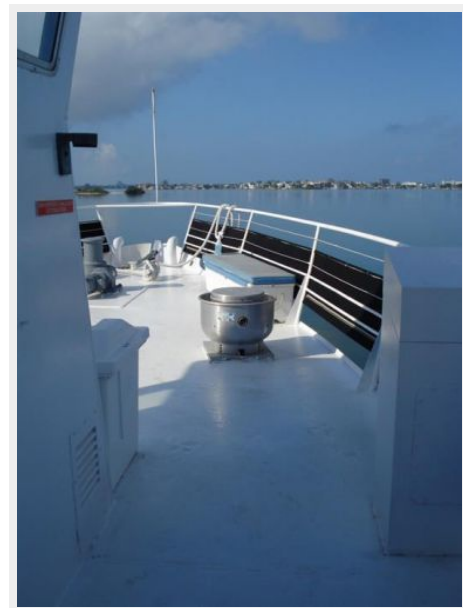
**Twin bunks**



**Top deck**



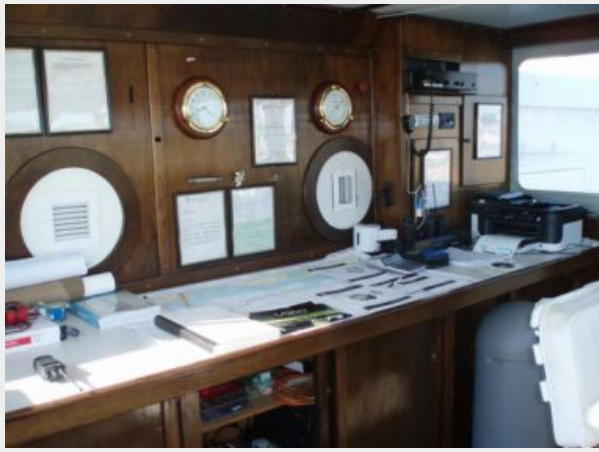
**Side deck**



**Bow deck**



**Bridge**



**Engine room**



**Galley**



**Galley stove**



**Engine Room**



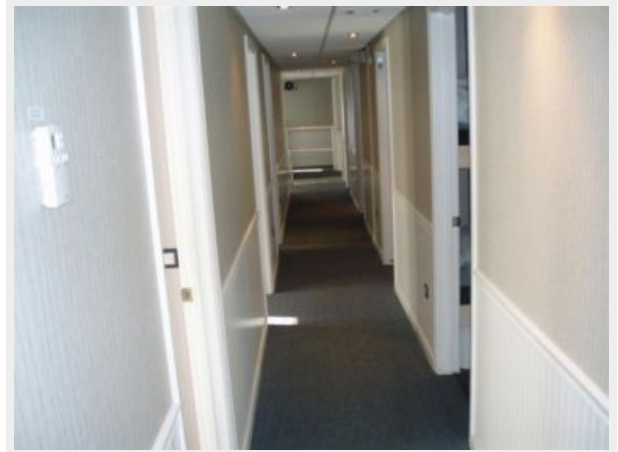
**Engine room**



**Port side**



**Hallway**



**Head**



**Bridge**



**Dinning room**



**Engine**



**Tool crib**



**AC units**



**Wsher dryer**



# CONTACTS

---

Andrey Shestakov, leading yacht broker of the sales department of Shestakov Yacht Sales Inc. Shestakov Yacht Sales Inc., the official representative of the Miami/Fort Lauderdale FL headquarters.

## Contact details

---

Email: [andrey@shestakovyachtsales.com](mailto:andrey@shestakovyachtsales.com)

Web: [shestakovyachtsales.com/en/](http://shestakovyachtsales.com/en/)

## Telephones

---

USA: +1(954)274-4435

## Office hours

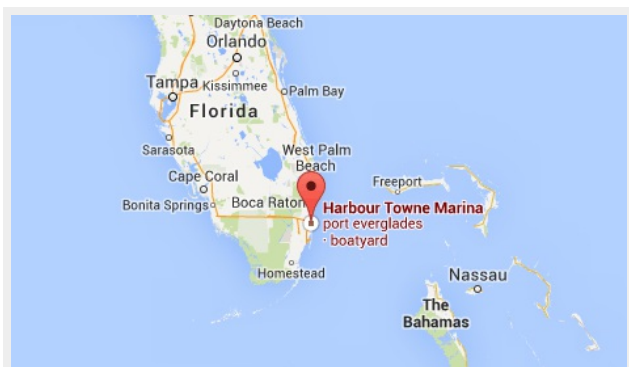
---

Monday – Saturday: **9:00 - 21:00** EDT

Sunday: **closed**

## Address

---



Harbour Towne Marina, 850 NE 3rd St,  
STE 213, Dania, FL 33004