

DIVERSION — VIKING



Судостроитель: VIKING

Год постройки: 2006

Модель: Катер для спортивной рыбалки

Цена: **ЦЕНА ЯХТЫ ПО ЗАПРОСУ**

Местонахождение: United States

Длина общая: 48' 0" (14.63m)

Ширина: 16' 6" (5.03m)

Макс. осадка: 4' 9" (1.45m)

Крейс. скорость: 31 Kts. (36 MPH)

Макс. скорость: 36 Kts. (41 MPH)

Купить **Diversion — VIKING** а также выбрать подходящую вам яхту из нашего каталога яхт вам поможет опытный яхтенный брокер Андрей Шестаков. На сегодняшний день компания **Shestakov Yacht Sales Inc.** имеет большое количество яхт в собственном списке продаж, а также тесно сотрудничает со всеми крупными яхтенными производителями по всему миру.

Для того чтобы купить яхту **Diversion — VIKING** а также проконсультироваться по любому вопросу связанному с покупкой, продажей, чартером яхт позвоните по телефону **+7(918)465-66-44**.

ОГЛАВЛЕНИЕ

ОГЛАВЛЕНИЕ	2
ХАРАКТЕРИСТИКИ	5
Обзор	5
Основная информация	5
Размеры	5
Скорость, вместимость и масса	5
Размещение	6
Корпус и палуба	6
Информация о двигателе	6
ПОДРОБНОЕ ОПИСАНИЕ	7
Vessel Walkthrough	7
Salon	7
Dinette	7
Galley	7
Master Stateroom	8
Master Head	8
Forward Guest Stateroom	8
Starboard Guest Stateroom	9
Guest Head	9
Helm	9
Flybridge	10
Electronics	10
Electrical System	11
Mechanical Equipment	11
Engine Room	11
Cockpit	12
Decks	12
Hull	12

Companionway	13
Improvements and Upgrades by Current Owner	13
Exclusions	13
Broker's Remarks	13
Исключения	13
Отказ от ответственности	14
ФОТОГРАФИИ	15
Salon	15
Salon	15
Salon	15
Salon	15
Galley	15
Galley	15
Sub Zeros	16
Dinette	16
Dinette	16
Master Stateroom	16
Master Stateroom	16
Master Head	16
VIP Head	17
VIP Stateroom	17
Bunkroom	17
Bunkroom TV	17
Washer & Dryer	18
Helm	18
Helm	18
Helm	18
Helm	18
Helm	18

Teaser Reels	19
Flybridge Seating	19
Cockpit	19
Cockpit	19
Cockpit	19
Leaning Post	19
Mezzanine Seating	20
Engine Room	20
Generator	20
Water Maker	20
Bow	20
Transom	20
Running	21
Running	21
Profile	21
Profile	21
Running	21
Running Profile	21
Profile	22
КОНТАКТЫ	23
Контактная информация	23
Телефоны	23
Время работы	23
Адрес	23

ХАРАКТЕРИСТИКИ

Обзор

This is the best 2006 48' Viking Convertible on the market today. New SAT TV dome and new 42" Salon TV recently installed. The 48 Viking has exceptional styling, superior engineering, exemplary finish and superior open water performance. This "big" 48' Viking offers the three stateroom accommodations plan with two full heads. Recent improvements include and Atlantic Blue painted hull, Teak helm pod, teak covering boards, teak steps at the salon door and on the flybridge ladder. her 130 sq. ft. cockpit is "fish ready". This is one incredible boat and will not disappoint.

Основная информация

Тип судна: Катер для спортивной рыбалки

Подкатегория: Convertible

Модельный год: 2006

Год постройки: 2006

Страна: United States

Верх: Hardtop

Открытая палуба мостика: Да

Кубрик: Да

Размеры

Длина общая: 48' 0" (14.63m)

Ширина: 16' 6" (5.03m)

Макс. осадка: 4' 9" (1.45m)

Длина привального бруса: 48' 10" (14.88m)

Скорость, вместимость и масса

Крейс. скорость: 31 Kts. (36 MPH)

Макс. скорость: 36 Kts. (41 MPH)

Водоизмещение: 56450 Pounds

Вместимость воды: 175 Gallons

Вместимость сточного бака: 50 Gallons

Объем топливного бака: 1012 Gallons

Размещение

Всего кают: 3

Всего коек: 5

Спальные места: 6

Всего ком. состава: 2

Корпус и палуба

Материал корпуса: Fiberglass

Информация о двигателе

Двигатели: 2

Производитель: MAN

Модель: V-10, 1100CRM

Тип двигателя: Inboard

Тип топлива: Diesel

ПОДРОБНОЕ ОПИСАНИЕ

Vessel Walkthrough

As you enter the salon, there is a "L" shaped sofa and dinette to port. The full service galley is to starboard. Below deck to port is a midship master stateroom. To starboard are two guest staterooms featuring upper/lower bunks. there are two full heads, one for the master and one that serves as the guest head.

Salon

- Luxury edition decor
- Full canvas carpet runner
- Carpeting
- Teak and holly floor at entrance
- Teak valances
- 42" Samsung TV, new 2014
- Bose Lifestyle entertainment system
- SAT TV receiver
- L-shaped sofa, storage beneath
- Lighting with dimmer switches
- Air conditioning
- Salon door damper, First Mate
- Fixed frameless side windows
- Main electrical service panel
- Teak cabinetry with drawers

Dinette

- U-shaped dinette with storage beneath
- Teak, high gloss dinette table
- Seating for four

Galley

- Sub-zero refrigerator & freezer, undercounter
- Corian counter tops and sink
- Custom teak and holly floor
- Electric 3 burner range top
- Microwave/convection oven

- Garbage disposal
- Exhaust fan
- Storage cabinets
- Storage drawers
- 110V outlets
- Water tank level gauge

Master Stateroom

- Island double berth with storage beneath
- Storage drawers beneath berth
- Sharp 15" flat screen TV
- Dedicated SAT TV receiver
- Stereo/CD player
- End tables with teak tops
- Air conditioning
- Lighting with dimmer switches
- 110V outlets
- Hanging locker
- Reading lights over berth
- Carpeting

Master Head

- Towel bar and ring, satin nickel
- Amtico, teak and holly flooring
- Air conditioning
- Electric toilet
- Mirrored vanity
- Lighting with dimmer switch
- 110 V outlets, GFI
- Corian vanity top
- Medicine cabinet
- Sink
- Linen storage
- Shower stall with light
- Exhaust fan

Forward Guest Stateroom

- Upper/lower banks (wide)

- 15" Sharp TV
- Underberth storage
- Air conditioning
- Lighting with dimmer switch
- Hanging locker
- Carpeting

Starboard Guest Stateroom

- Upper/lower bunks
- Air conditioning
- Carpeting
- Hanging locker
- Ensuite door to head
- Stereo Speakers

Guest Head

- Teak and holly flooring
- Towel bar & rings, satin nichel
- Stall shower with light
- Corian counter top
- Mirrored vanity
- Air conditioning
- Electric toilet
- Sink
- Medicine cabinet
- Linen storage
- Lighting
- 110V GFI receptacle
- Exhaust fan

Helm

- Custom varnished teak helm pod
- Custom teak Murray helm seats
- Electronics single lever controls
- Power assist steering
- Recessed electronics box
- Remote spotlight
- Under helm access with lights & storage

- Manual engine shutdown switches
- Moritz safety systems monitor
- Trim tabs
- Engines gauges and switches
- Compass, lighted
- Anchor/navigation lights

Flybridge

- Hard top with EZ2CY, 4-sided enclosure
- Hatch over Flybridge ladder entry
- Molded in 300 watt spreader lights
- Blue LED lights in Hardtop
- Six rod rocket launcher, aft rail
- Fresh water outlet
- No exposed fasteners
- Drip dry foam cushioned seating
- 2 each, Stereo speakers
- Insulated soda box, starboard seat
- Powder coated grab rails
- Center outrigger
- US6 - overhead teaser reels
- Fire system control
- Fuel gauge
- L-shaped lounge to port
- Straight lounge to starboard
- Freshwater washdown hose

Electronics

- Furuno Navnet 1 VX2, 15" Monitor
- Buttons for GPS Plotter, Fishfinder, Radar
- 15" Northstar 6100I, GPS, Plotter
- Furuno 12kw Radar, 72NM
- SAT TV Dome, new 2014
- Two ICOM VHF Radios
- Simrad AP26, Auto pilot
- Simrad WR20 remote for Auto pilot
- ACR spotlight
- 12V outlet
- Fusion Stereo, MSIP600, AM/FM/CD/SAT Radio

Electrical System

- Onan 17.5kw generator, 1675 hours
- Voltage stabilizer transformer
- Dockside electrical connection, 50 amp/220V
- Retractable Glendinning cablemaster
- 24V DC power system
- 24V and 12V Power on Flybridge
- 2 each, 24V batteries
- 2 each battery chargers
- Battery distribution panel
- Main electrical distribution panel
- Battery parallel switch
- Bonded electrical system
- Receptacles, 120V deplex, GFI throughout

Mechanical Equipment

- AC, reverse cycle heat
- 110V Pressurized water system
- Delta T engine room ventilation
- Water heater
- External sea strainers
- Fire suppression system
- 2 each, Y-valve emergency bilge pumps
- Dual piston trim tabs
- Fuel transfer system, 24 Volt
- Fuel priming pumps
- Hours meters
- Mufflers
- Racor fuel system filtering
- Structured steel engine beds

Engine Room

- 2 each, 1100 HP, MAN CRM V-10 engines
- Awlgrip engine room
- Onan 17kw generator with sound shield
- Voltage stabilizer transformer
- 24V fuel priming pumps
- Oil change system
- Engine gauges at Cockpit door

- All pumps, etc painted white
- Thru-hulls and sea strainers painted white
- Dual power steering pumps
- 110V outlet
- Engine room door lock

Cockpit

- Bluewater fighting chair with offset pedestal and four rocket launchers
- Blue LED lights, under coaming
- Custom seat cushions with drink holders
- Awlgripped lazarette
- Transom door with opening gate
- 4 Rod holders in covering boards
- Refrigerated step box
- Y-valve for fresh and salt water washdowns
- Fresh and salt water washdowns
- Transom steps
- 3, Overhead lights
- Livewell in Cockpit sole
- Rupp outriggers with spreaders
- Fishboxes in Cockpit sole
- Stereo speakers
- Engine room access
- Extended flybridge overhang
- Molded in Tackle Center
- Deep custom bait freezer
- Tackle storage
- Cockpit canvas fly cover with side panels and canopy poles

Decks

- Bow pulpit
- Fresh water washdown inside anchor rode locker
- Recessed trim tab covers
- Lewmar anchor, windlass
- Anchor rode, 25' chain and 250' anchor line

Hull

- Hull painted Atlantic Blue

- Oval exhaust outlets
- Fiberglass side thru-hulls
- Boot stripe
- Bottom paint
- Upgraded Veem propellers
- Underwater lights in transom, 2 ea

Companionway

- Bilge access hatches
- Central vacuum
- Washer and dryer
- Lighting
- Storage cabinets

Improvements and Upgrades by Current Owner

- Hull painted Atlantic Blue
- Teak covering boards
- Teak steps to salon and flybridge ladder
- Eskimo ice machine
- Water maker
- New SAT TV dome
- New 42" Salon TV
- Custom teak helm pod
- All interior hardware changed to upgraded satin nickel
- Non-skid in cockpit refinished
- Upgraded Bose entertainment sound system

Exclusions

Rocket launcher, lamp, liquor decanter, tools, all fishing gear and tackle, personal items

Broker's Remarks

This boat has been expertly maintained and continuously upgraded throughout its ownership with an open check book. There is not a better 48' sport fisherman available. When you see it, you'll appreciate its value.

Исключения

При продаже яхты исключаются личные вещи владельца.

Отказ от ответственности

Компания предоставляет описание судна или яхты добросовестно, но не может гарантировать точность этой информации, а также не ручается за техническое состояние. Покупатель должен проинструктировать своих агентов или оценщиков исследовать представленную информацию более подробно, по собственному желанию. Продажа судна или яхты, изменение цены или снятие с продажи будет происходить без предварительного уведомления.

ФОТОГРАФИИ

Salon



Salon



Salon



Salon



Galley



Galley



Sub Zeros



Dinette



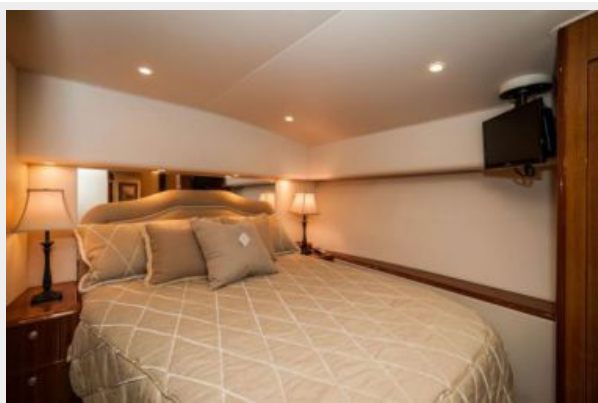
Dinette



Master Stateroom



Master Stateroom



Master Head



VIP Stateroom



VIP Head



Bunkroom



Bunkroom TV



Washer & Dryer



Helm



Helm



Helm



Helm



Helm



Teaser Reels



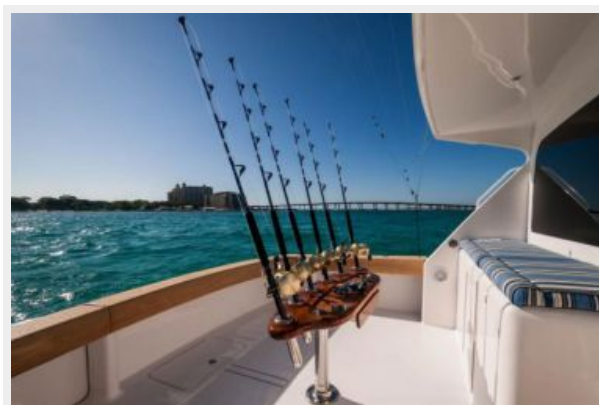
Flybridge Seating



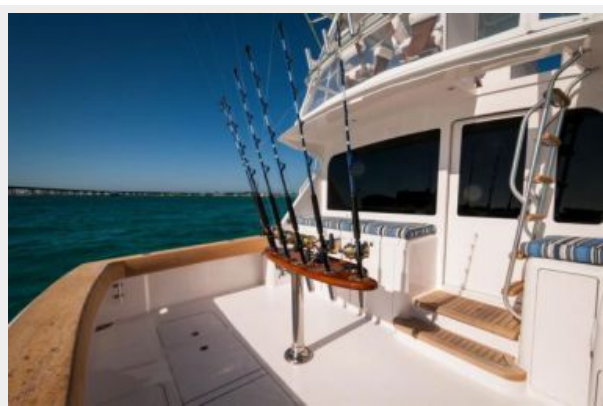
Cockpit



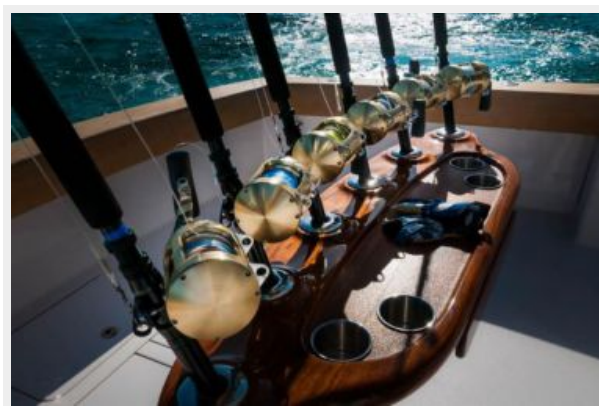
Cockpit



Cockpit



Leaning Post



Mezzanine Seating



Engine Room



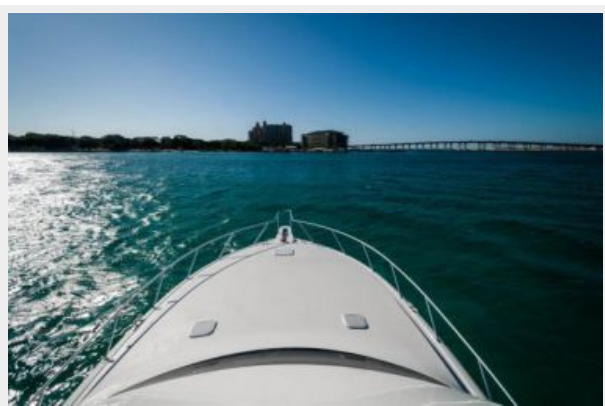
Generator



Water Maker



Bow



Transom



Running



Running



Profile



Profile



Running Profile



Running



Profile



КОНТАКТЫ

Андрей Шестаков (Andrey Shestakov) – ведущий яхтенный брокер отдела продаж яхт и судов компании Shestakov Yacht Sales Inc. Официальный представитель Shestakov Yacht Sales Inc. для русскоговорящих клиентов в центральном офисе компании в Майами/Форт Лодердейл/Флорида/США.

Контактная информация

Email: andrey@shestakovyachtsales.com

Web: shestakovyachtsales.com

Телефоны

Краснодарский край: **+7(918)465-66-44**

США, Майами, Флорида: **+1(954)274-4435**

Время работы

Понедельник – Суббота: **9:00 - 21:00**
EDT

Воскресенье: **Закрито**

Адрес



Harbour Towne Marina, 850 NE 3rd St,
STE 213, Dania, FL 33004