

EROICA — TARTAN



Судостроитель: TARTAN

Год постройки: 1981

Модель: Крейсерская яхта

Цена: ЦЕНА ЯХТЫ ПО ЗАПРОСУ

Местонахождение: United States

Длина общая: 33' 0" (10.06m)

Ширина: 10' 11" (3.33m)

Макс. осадка: 4' 5" (1.35m)

Купить **EROICA — TARTAN** а также выбрать подходящую вам яхту из нашего каталога яхт вам поможет опытный яхтенный брокер Андрей Шестаков. На сегодняшний день компания **Shestakov Yacht Sales Inc.** имеет большое количество яхт в собственном списке продаж, а также тесно сотрудничает со всеми крупными яхтенными производителями по всему миру.

Для того чтобы купить яхту **EROICA — TARTAN** а также проконсультироваться по любому вопросу связанному с покупкой, продажей, чартером яхт позвоните по телефону **+7(918)465-66-44**.

ОГЛАВЛЕНИЕ

ОГЛАВЛЕНИЕ	2
ХАРАКТЕРИСТИКИ	3
Обзор	3
Основная информация	5
Размеры	6
Скорость, вместимость и масса	6
Размещение	6
Корпус и палуба	6
Информация о двигателе	6
ФОТОГРАФИИ	7
КОНТАКТЫ	10
Контактная информация	10
Телефоны	10
Время работы	10
Адрес	10

ХАРАКТЕРИСТИКИ

Обзор

Designed by Sparkman & Stephens, the Tartan 33 is one of the most sought-after models on the brokerage market. "EROICA" has the powerful yet easy-to-handle fractional rig (sail area 531 sq.ft.) along with the innovative Scheel keel, providing excellent performance despite a draft of only 4'5" - great for Island cruising!. The second owner has maintained her well but no longer has time to enjoy her. Legendary Tartan quality, capable of being competitive on the race course, and comfortable for extended cruising or liveaboard, this one is a must-see. Boat Name "EROICA" Specs Builder: Tartan Designer: S&S Flag of Registry: United States Dimensions LOA: 33 ft 8 in Beam: 10 ft 11 in LWL: 28 ft 10 in Maximum Draft: 4 ft 5 in Ballast: 4400 lbs Bridge Clearance: 51 ft 6 in Dry Weight: 10000 lbs Engines Engine 1: Engine Brand: Universal Year Built: 1981 Engine Model: 5424 Engine Type: Inboard Engine/Fuel Type: Diesel Drive Type: Direct Drive Engine Power: 24 HP Tanks Fresh Water Tanks: (60 Gallons) Fuel Tanks: (26 Gallons) Holding Tanks: (19 Gallons)

Vessel Specifications

Accommodations

V-Berth with filler is forward. Enclosed head with shower is to stbd. Opposite head is good storage in hanging locker and drawers. The main salon has a pilot berth to port above a linear settee. The dining table is mounted on the bulkhead and folds up out of the way when not in use. There is a linear settee on the stbd side that converts to double berth. A large icebox is located to port, aft of the settee. The remainder of the galley is to stbd. Aft to port is a fold down nav table and upholstered seat, followed by a large single quarterberth, providing a total of 7 sleeping berths including 2 doubles.

Galley

Hillrange three burner pressurized alcohol stove with oven, large icebox, dry storage locker, single stainless steel sink, shelves, drawers, hot and cold pressure water.

Electronics

Auto Pilot, Datamarine depth sounder and speed log, Handheld GPS, Standard Horizon Eclipse marine VHF, AM/FM/CD stereo. Portable battery charger, 2 Gp. 27 batteries with selector switch, tricolor Masthead running lights Also wired for 110V shore power.

Engine & Engine Room

FWC 24 HP Universal model 5424 (no hour meter).

Sails

Main W/ 2 reef points, working jib, ProFurl roller furling w/ 110, and a cruising spinnaker.

Excellent airflow and cross-ventilation is provided by 9 opening ports with screens, 2 hatches plus the companionway, and 2 Dorade vents.

T33 Forum Discussion The Boat

Overall, the Tartan 33 is a well-built straightforward cruiser/racer, with good storage and simple, accessible systems, which will hit hull speed given the right conditions and an able crew. Comfortable enough for four on weekends, the boat will also deliver safe and secure long-distance capability for coastal cruising couples. She's no turbo on the racecourse but she wins her share against some of the best in class and can be singled-handed with comparative ease. The Universal 5424 (24 hp) diesel pushes her nicely through the water at 5.5-6.5 kts, cruise-loaded, usually burning half-a-gallon per hour.

Most cruiser/racers are compromise boats. For the most part, T33s favor the cruising side of the equation. Conversely, the Tartan Tens and T33Rs favor the racing side.

Hello Blue Water?

Blue-water capability is generally on the mind of a cruising sailor. Is the T33 designed to be blue-water capable? Yes, given the proper gear, boat condition, and an experienced crew. A spokesperson for S&S recently stated, "Each owner must decide for himself, or by professional survey, the structural condition of the hull and deck, rig condition, and safety gear required for extended passages. With proper condition and the skipper knowledge suitable to offshore passage making, we see no reason that a T33 can't travel

world wide (in moderate climates)."

At this writing, we know that T33s have made the commute from the East coast to Bermuda and back and a good number have cruised the Caribbean.

According to S&S, "A typical IMS club-certificate for the T33 lists a limit of positive stability of 119° - adequate for offshore work." In addition, due to Rod Stephens commitment to proper offshore design, the T33 includes a deep, safe cockpit with drains, more than adequate handholds, and sea berths.

Scheel Keel

Scheel Keels were offered on nearly 50 different boat designs. Increased demand for shallow draft boats without a centerboard was spurred, at least in part, by the increase in the Florida and Bahamas charter trade. Henry Scheel designed and patented the keel. The concept was to reduce draft, eliminate the centerboard, and provide sufficient ballast while keeping a low center of gravity. Further, the entire keel system had to be sturdy enough to withstand groundings. Keel bolts on T33s are directly accessible via the bilge.

Scheel Keel Design Objectives:

- Reduce draft
- Eliminate centerboard
- Low ballast/center of gravity
- Reduce leeward-to-windward water flow

Основная информация

Тип судна: Крейсерская яхта

Подкатегория: Sloop

Модельный год: 1981

Год постройки: 1981

Страна: United States

Кубрик: Да

Размеры

Длина общая: 33' 0" (10.06m)

Длина по ватерлинии: 28' 10" (8.79m)

Ширина: 10' 11" (3.33m)

Макс. осадка: 4' 5" (1.35m)

Трапы: 51' 6" (15.70m)

Скорость, вместимость и масса

Водоизмещение: 10000 Pounds

Вместимость воды: 60 Gallons

Вместимость сточного бака: 19 Gallons

Объем топливного бака: 26 Gallons

Размещение

Всего кают: 1

Корпус и палуба

Материал корпуса: Fiberglass

Информация о двигателе

Двигатели: 1

Производитель: Universal

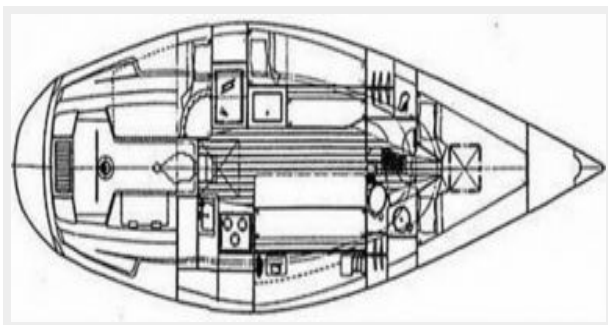
Модель: 5424

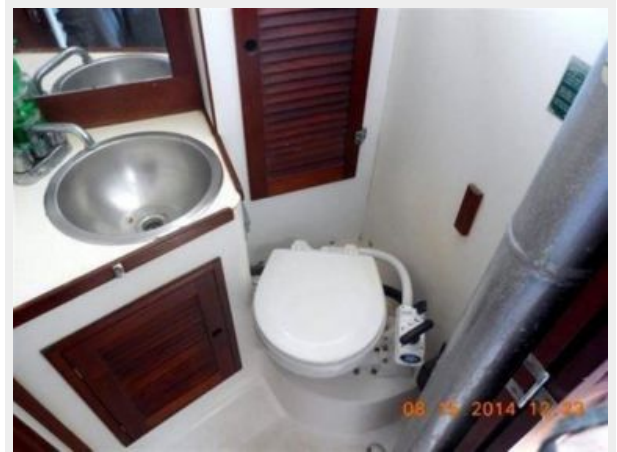
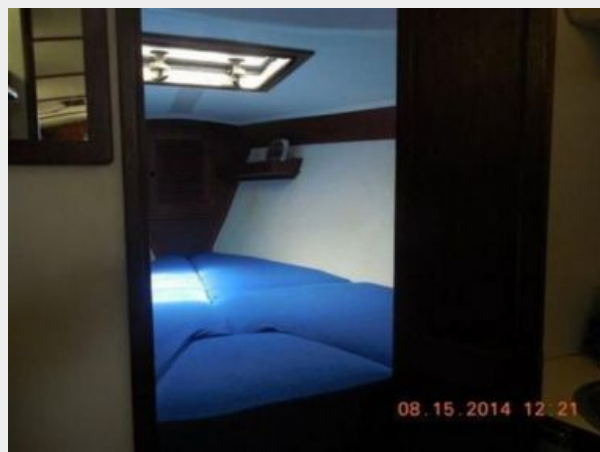
Тип двигателя: Inboard

Тип топлива: Diesel

ФОТОГРАФИИ







КОНТАКТЫ

Андрей Шестаков (Andrey Shestakov) – ведущий яхтенный брокер отдела продаж яхт и судов компании Shestakov Yacht Sales Inc. Официальный представитель Shestakov Yacht Sales Inc. для русскоговорящих клиентов в центральном офисе компании в Майами/Форт Лодердейл/Флорида/США.

Контактная информация

Email: andrey@shestakovyachtsales.com

Web: shestakovyachtsales.com

Телефоны

Краснодарский край: **+7(918)465-66-44**

США, Майами, Флорида: **+1(954)274-4435**

Время работы

Понедельник – Суббота: **9:00 - 21:00**
EDT

Воскресенье: **Закрыто**

Адрес



Harbour Towne Marina, 850 NE 3rd St,
STE 213, Dania, FL 33004