

EXIT STRATEGY — BENETEAU



Builder: BENETEAU

LOA: 50' 0" (15.24m)

Year Built: 1996

Min Draft: 5' 11" (1.80m)

Model: Cruising Sailboat

Price: PRICE ON APPLICATION

Location: United States

Our experienced yacht broker, Andrey Shestakov, will help you choose and buy a yacht that best suits your needs **Exit Strategy — BENETEAU** from our catalogue. Presently, at Shestakov Yacht Sales Inc., we have a wide variety of yachts available on our sale's list. We also work in close contact with all the big yacht manufacturers from all over the world.

If you would like to buy a yacht **Exit Strategy — BENETEAU** or would like help answering any questions concerning purchasing, selling or chartering a yacht, please call **+1(954)274-4435**

TABLE OF CONTENTS

TABLE OF CONTENTS	2
SPECIFICATIONS	4
Overview	4
Basic Information	4
Dimensions	4
Speed, Capacities and Weight	4
Accommodations	5
Hull and Deck Information	5
Engine Information	5
DETAILED INFORMATION	6
Accommodations/Master	6
Salon/Galley	6
Guest Staterooms	6
Crew Quarters	6
Nav Station	7
Electronics	7
Electrical	7
Engine and Mechanical	8
Hull and Deck	8
Sails and Rigging	8
Canvas	9
Safety	9
Exclusions	9
Closing Remarks	9
Exclusions	9
Disclaimer	9
PHOTOS	11
Salon dining	11

Salon Seating	11
Galley	11
Nav Station	11
Master Cabin	12
Aft Guest Cabin	12
Generator	12
Aft Guest Cabin	12
Head and shower	13
Foredeck	13
Headsail Roller Furler	13
Cockpit	13
Swim Platform	14
Tender	14
Exit Strategy	14
CONTACTS	15
Contact details	15
Telephones	15
Office hours	15
Address	15

SPECIFICATIONS

Overview

EXIT STRATEGY has been cruised by a knowledgeable owner who has maintained and serviced her with an open check book. This becomes evident as you walk through this beautiful vessel. From her sole to her headliner she is clean, polished and very well cared for. The layout is perfect for cruising couples or large families. Each of her three cabins has ensuite heads; the master forward has separate shower and head. Each cabin has large double berths with plenty of storage and room to relax. There is a full set of marine grade carpeting for the sole. Her dark blue topsides and white deck make for a striking combination. All lines are led aft and her main with furling boom and ProFurl head sail make shorthanded sailing a breeze.

Basic Information

Category: Cruising Sailboat

Model Year: 1996

Year Built: 1996

Country: United States

Coast Guard #: 1039671/Ft Lauderdale, FL

Dimensions

LOA: 50' 0" (15.24m)

LWL: 48' 6" (14.78m)

Min Draft: 5' 11" (1.80m)

Speed, Capacities and Weight

Displacement: 30900 Pounds

Water Capacity: 260 Gallons

Holding Tank: 15 Gallons

Fuel Capacity: 132 Gallons

Accommodations

Total Cabins: 3

Total Berths: 3

Sleeps: 6

Total Heads: 3

Crew Cabin: 1

Hull and Deck Information

Hull Material: Fiberglass

Hull Color: Dark Blue

Engine Information

Engines: 1

Manufacturer: Perkins

Model: M90

Engine Type: Inboard

Fuel Type: Diesel

DETAILED INFORMATION

Accommodations/Master

Exit Strategy is a three cabin owner's version. Forward is the owner's cabin with Pullman double to port and lots of storage under with drawers and a large hanging locker with two additional lockers. A writing desk is forward of the settee to starboard. A 24" LCD TV with Samsung Blu-ray player and digital antenna is mounted on the forward bulkhead.

There are two overhead opening hatches with two additional opening ports. Completely forward are two separate access doors into the head and shower. The head and shower also have an interior door separating them as well. There is a separate holding tank outboard of the head.

Salon/Galley

As you enter the main salon the L shaped settee and dining table are to port with seating for 8. There is good storage outboard and behind the settee. There is an island counter and settee with storage amidships. Under the settee amidships is the generator. The large galley is to starboard. It features a Force 10 three burner stove with oven, a double stainless sink with storage under, a very large refrigerator and freezer. The salon is spacious with very good natural light. There are four overhead opening hatches and four opening ports.

Guest Staterooms

Aft to starboard is the second cabin with ensuite head and shower. A large hanging locker plus an additional storage locker and outboard storage provide plenty of space for necessities on long voyages.

There are two overhead opening hatches and two additional opening ports. A separate holding tank is provided for this head.

Aft to port is the third cabin with ensuite head and shower. A large hanging locker plus an additional storage locker and outboard storage provide plenty of space for necessities on long voyages.

There are two overhead opening hatches and two additional opening ports. A separate holding tank is provided for this head. Both of the aft cabins provide good access to the engine compartment. The companion way steps are easily removed for full access to the front of the engine.

Crew Quarters

Forward of the master cabin, in the fo'c'sle, is the crew quarters, containing bunks and the washer/dryer.

Nav Station

- Large aft facing navigation station is well equipped with desk and opening top.
- Paneltronics board
- Raymarine RL70C Pathfinder plus radar with 4Kw dome on mast
- Heart Link 2000 inverter
- Standard Horizon matrix VHF with RAM station and separate antenna on mast
- KVH Trac Phone, VSAT 424 with tracking dome
- Alpine CDM 781 stereo, speakers throughout
- XM radio with Weatherwrx receiver

Electronics

- Paneltronics board
- Raymarine RL70C Pathfinder plus radar with 4Kw dome on mast
- Heart Link 2000 inverter
- Standard Horizon VHF radio
- KVH Trac Phone
- Alpine CDM 7861 stereo, speakers throughout
- XM radio with Weatherwrx receiver
- **Port helm:** Standard Horizon GPS Chart plotter CPV 350, Compass, Raymarine ST60 speed and depth
- **Starboard helm:** Raymarine ST60 wind speed, Raytheon autopilot ST 7001+, Raymarine RC530 chart plotter

Electrical

- Fischer Panda generator 8Kw mini with 1500 hours.
- 3000 watt Heart inverter with Xantrax 2000 controller
- Separate Pro charge charging system
- Dual 30Amp shore power 110AC, both wired with Marine grade surge protector and anti-electrolysis circuits
- 4 group 8D Gel batteries, new in 2014, 225 amp hours each
- Navigation lights
- Tricolor light
- Anchor light
- Engine steaming light
- Spreader lights

Engine and Mechanical

- Perkins M90 85 HP with 3500 hours
- Wurth transmission
- 3 Blade Max Prop, rebuilt by factory 2014
- Three AC units, Marine Air, 16,000 ea
- Frigoboat refrigeration with engine compressor and cold plate
- Grunert 12V freezer
- Rule automatic 500 in main bilge, Rule 200 with float switch
- Manual Whale pump
- Pura Water maker 150 gal/day

Hull and Deck

- Dark blue hull, gold cove stripe
- Teak cap rails, Teak hand rails
- Sugar scoop stern with swim ladder
- Electric Lofrans Falcon Windlass
- FX-55Fortress anchor
- Delta anchor with new oversized stainless swivel and 200' of chain
- Spare three braid 200' of rode
- Snubber
- 4 deck Dorades with stainless vents
- Stainless support rails at mast and over hatches
- Propane tanks (2) under starboard helm seat
- Cooler with drain under port helm seat
- Center cockpit drop leaf table
- 2 helm stations
- Arch
- Dinghy davits
- 2000' AB Rib VS10, 10'6" hard bottom
- 2000' 15 HP Yamaha 4 stroke outboard completely serviced in 2014 and custom painted
- Transom door
- (8)Dock lines
- (4) Fenders
- Gas grill mounted on stern rail

Sails and Rigging

- Sparcraft mast, double spreader
- 2 Lewmar 66 primaries
- 2 Lewmar 44 cabin top

- 1 Lewmar 40, mast
- 1 Lewmar 30 mast
- Rigid boom vang
- Hi-low boom furler
- Pro Furl genoa furler
- Spinnaker pole vertically stowed on mast
- Doyle Spinnaker with chute, like new condition
- Doyle mainsail fully batten, furls in boom, good condition and serviced yearly
- 135% Doyle Genoa, good condition and serviced yearly
- 2 sets of 4 line stoppers on cabin top
- All lines led aft

Canvas

- Dodger and Bimini with full set of side enclosures

Safety

- Global Fix EPIRB expiring January 2015
- Horseshoe buoy
- MOB flag

Exclusions

- Personal belongings

Closing Remarks

Exit Strategy is a well-equipped cruising boat, always maintained in top condition. A beautiful three cabin Farr design ready for her next adventure. Owner is motivated, ready to move up and is looking for offers. Easy to see in Ft Lauderdale. Courtesy showings available.

Exclusions

Owner's personal belongings.

Disclaimer

The Company offers the details of this vessel or yacht in good faith but cannot guarantee or

warrant the accuracy of this information nor warrant the condition of the vessel. A buyer should instruct his representatives, agents, or his surveyors, to investigate such details as the buyer desires validated. This vessel or yacht is offered subject to prior sale, price change, or withdrawal without notice.

PHOTOS

Salon dining



Salon Seating



Galley



Nav Station



Master Cabin



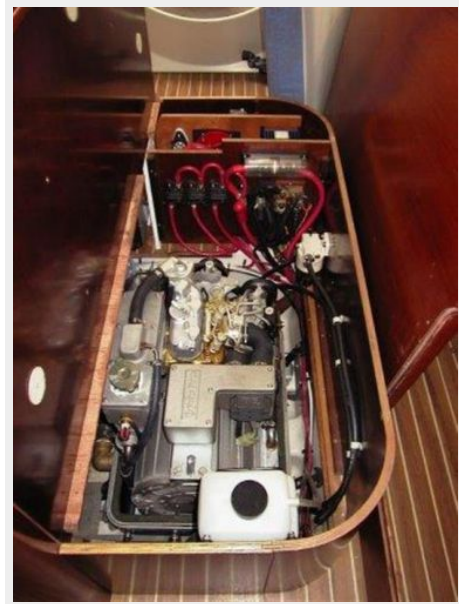
Aft Guest Cabin



Aft Guest Cabin



Generator



Head and shower



Foredeck



Headsail Roller Furler



Cockpit



Swim Platform



Tender



Exit Strategy



CONTACTS

Andrey Shestakov, leading yacht broker of the sales department of Shestakov Yacht Sales Inc. Shestakov Yacht Sales Inc., the official representative of the Miami/Fort Lauderdale FL headquarters.

Contact details

Email: andrey@shestakovyachtsales.com

Web: shestakovyachtsales.com/en/

Telephones

USA: +1(954)274-4435

Office hours

Monday – Saturday: **9:00 - 21:00** EDT

Sunday: **closed**

Address



Harbour Towne Marina, 850 NE 3rd St,
STE 213, Dania, FL 33004