

EXIT STRATEGY — BENETEAU



Судостроитель: BENETEAU

Год постройки: 1996

Модель: Крейсерская яхта

Цена: **ЦЕНА ЯХТЫ ПО ЗАПРОСУ**

Местонахождение: United States

Длина общая: 50' 0" (15.24m)

Мин. осадка: 5' 11" (1.80m)

Купить **Exit Strategy — BENETEAU** а также выбрать подходящую вам яхту из нашего каталога яхт вам поможет опытный яхтенный брокер Андрей Шестаков. На сегодняшний день компания **Shestakov Yacht Sales Inc.** имеет большое количество яхт в собственном списке продаж, а также тесно сотрудничает со всеми крупными яхтенными производителями по всему миру.

Для того чтобы купить яхту **Exit Strategy — BENETEAU** а также проконсультироваться по любому вопросу связанному с покупкой, продажей, чартером яхт позвоните по телефону **+7(918)465-66-44**.

ОГЛАВЛЕНИЕ

| | |
|-------------------------------|----|
| ОГЛАВЛЕНИЕ | 2 |
| ХАРАКТЕРИСТИКИ | 4 |
| Обзор | 4 |
| Основная информация | 4 |
| Размеры | 4 |
| Скорость, вместимость и масса | 4 |
| Размещение | 5 |
| Корпус и палуба | 5 |
| Информация о двигателе | 5 |
| ПОДРОБНОЕ ОПИСАНИЕ | 6 |
| Accommodations/Master | 6 |
| Salon/Galley | 6 |
| Guest Staterooms | 6 |
| Crew Quarters | 6 |
| Nav Station | 7 |
| Electronics | 7 |
| Electrical | 7 |
| Engine and Mechanical | 8 |
| Hull and Deck | 8 |
| Sails and Rigging | 8 |
| Canvas | 9 |
| Safety | 9 |
| Exclusions | 9 |
| Closing Remarks | 9 |
| Исключения | 9 |
| Отказ от ответственности | 9 |
| ФОТОГРАФИИ | 11 |
| Salon dining | 11 |

| | |
|------------------------|-----------|
| Salon Seating | 11 |
| Galley | 11 |
| Nav Station | 11 |
| Master Cabin | 12 |
| Aft Guest Cabin | 12 |
| Generator | 12 |
| Aft Guest Cabin | 12 |
| Head and shower | 13 |
| Foredeck | 13 |
| Headsail Roller Furler | 13 |
| Cockpit | 13 |
| Swim Platform | 14 |
| Tender | 14 |
| Exit Strategy | 14 |
| КОНТАКТЫ | 15 |
| Контактная информация | 15 |
| Телефоны | 15 |
| Время работы | 15 |
| Адрес | 15 |

ХАРАКТЕРИСТИКИ

Обзор

EXIT STRATEGY has been cruised by a knowledgeable owner who has maintained and serviced her with an open check book. This becomes evident as you walk through this beautiful vessel. From her sole to her headliner she is clean, polished and very well cared for. The layout is perfect for cruising couples or large families. Each of her three cabins has ensuite heads; the master forward has separate shower and head. Each cabin has large double berths with plenty of storage and room to relax. There is a full set of marine grade carpeting for the sole. Her dark blue topsides and white deck make for a striking combination. All lines are led aft and her main with furling boom and ProFurl head sail make shorthanded sailing a breeze.

Основная информация

Тип судна: Крейсерская яхта

Модельный год: 1996

Год постройки: 1996

Страна: United States

Номер регистрации в береговой охране: 1039671/Ft Lauderdale, FL

Размеры

Длина общая: 50' 0" (15.24m)

Длина по ватерлинии: 48' 6" (14.78m)

Мин. осадка: 5' 11" (1.80m)

Скорость, вместимость и масса

Водоизмещение: 30900 Pounds

Вместимость воды: 260 Gallons

Вместимость сточного бака: 15 Gallons

Объем топливного бака: 132 Gallons

Размещение

Всего кают: 3

Всего коек: 3

Спальные места: 6

Всего ком. состава: 3

Каюты экипажа: 1

Корпус и палуба

Материал корпуса: Fiberglass

Цвет корпуса: Dark Blue

Информация о двигателе

Двигатели: 1

Производитель: Perkins

Модель: M90

Тип двигателя: Inboard

Тип топлива: Diesel

ПОДРОБНОЕ ОПИСАНИЕ

Accommodations/Master

Exit Strategy is a three cabin owner's version. Forward is the owner's cabin with Pullman double to port and lots of storage under with drawers and a large hanging locker with two additional lockers. A writing desk is forward of the settee to starboard. A 24" LCD TV with Samsung Blu-ray player and digital antenna is mounted on the forward bulkhead.

There are two overhead opening hatches with two additional opening ports. Completely forward are two separate access doors into the head and shower. The head and shower also have an interior door separating them as well. There is a separate holding tank outboard of the head.

Salon/Galley

As you enter the main salon the L shaped settee and dining table are to port with seating for 8. There is good storage outboard and behind the settee. There is an island counter and settee with storage amidships. Under the settee amidships is the generator. The large galley is to starboard. It features a Force 10 three burner stove with oven, a double stainless sink with storage under, a very large refrigerator and freezer. The salon is spacious with very good natural light. There are four overhead opening hatches and four opening ports.

Guest Staterooms

Aft to starboard is the second cabin with ensuite head and shower. A large hanging locker plus an additional storage locker and outboard storage provide plenty of space for necessities on long voyages.

There are two overhead opening hatches and two additional opening ports. A separate holding tank is provided for this head.

Aft to port is the third cabin with ensuite head and shower. A large hanging locker plus an additional storage locker and outboard storage provide plenty of space for necessities on long voyages.

There are two overhead opening hatches and two additional opening ports. A separate holding tank is provided for this head. Both of the aft cabins provide good access to the engine compartment. The companion way steps are easily removed for full access to the front of the engine.

Crew Quarters

Forward of the master cabin, in the fo'c'sle, is the crew quarters, containing bunks and the washer/dryer.

Nav Station

- Large aft facing navigation station is well equipped with desk and opening top.
- Paneltronics board
- Raymarine RL70C Pathfinder plus radar with 4Kw dome on mast
- Heart Link 2000 inverter
- Standard Horizon matrix VHF with RAM station and separate antenna on mast
- KVH Trac Phone, VSAT 424 with tracking dome
- Alpine CDM 781 stereo, speakers throughout
- XM radio with Weatherwrx receiver

Electronics

- Paneltronics board
- Raymarine RL70C Pathfinder plus radar with 4Kw dome on mast
- Heart Link 2000 inverter
- Standard Horizon VHF radio
- KVH Trac Phone
- Alpine CDM 7861 stereo, speakers throughout
- XM radio with Weatherwrx receiver
- **Port helm:** Standard Horizon GPS Chart plotter CPV 350, Compass, Raymarine ST60 speed and depth
- **Starboard helm:** Raymarine ST60 wind speed, Raytheon autopilot ST 7001+, Raymarine RC530 chart plotter

Electrical

- Fischer Panda generator 8Kw mini with 1500 hours.
- 3000 watt Heart inverter with Xantrax 2000 controller
- Separate Pro charge charging system
- Dual 30Amp shore power 110AC, both wired with Marine grade surge protector and anti-electrolysis circuits
- 4 group 8D Gel batteries, new in 2014, 225 amp hours each
- Navigation lights
- Tricolor light
- Anchor light
- Engine steaming light
- Spreader lights

Engine and Mechanical

- Perkins M90 85 HP with 3500 hours
- Wurth transmission
- 3 Blade Max Prop, rebuilt by factory 2014
- Three AC units, Marine Air, 16,000 ea
- Frigoboat refrigeration with engine compressor and cold plate
- Grunert 12V freezer
- Rule automatic 500 in main bilge, Rule 200 with float switch
- Manual Whale pump
- Pura Water maker 150 gal/day

Hull and Deck

- Dark blue hull, gold cove stripe
- Teak cap rails, Teak hand rails
- Sugar scoop stern with swim ladder
- Electric Lofrans Falcon Windlass
- FX-55Fortress anchor
- Delta anchor with new oversized stainless swivel and 200' of chain
- Spare three braid 200' of rode
- Snubber
- 4 deck Dorades with stainless vents
- Stainless support rails at mast and over hatches
- Propane tanks (2) under starboard helm seat
- Cooler with drain under port helm seat
- Center cockpit drop leaf table
- 2 helm stations
- Arch
- Dinghy davits
- 2000' AB Rib VS10, 10'6" hard bottom
- 2000' 15 HP Yamaha 4 stroke outboard completely serviced in 2014 and custom painted
- Transom door
- (8)Dock lines
- (4) Fenders
- Gas grill mounted on stern rail

Sails and Rigging

- Sparcraft mast, double spreader
- 2 Lewmar 66 primaries
- 2 Lewmar 44 cabin top

- 1 Lewmar 40, mast
- 1 Lewmar 30 mast
- Rigid boom vang
- Hi-low boom furler
- Pro Furl genoa furler
- Spinnaker pole vertically stowed on mast
- Doyle Spinnaker with chute, like new condition
- Doyle mainsail fully batten, furls in boom, good condition and serviced yearly
- 135% Doyle Genoa, good condition and serviced yearly
- 2 sets of 4 line stoppers on cabin top
- All lines led aft

Canvas

- Dodger and Bimini with full set of side enclosures

Safety

- Global Fix EPIRB expiring January 2015
- Horseshoe buoy
- MOB flag

Exclusions

- Personal belongings

Closing Remarks

Exit Strategy is a well-equipped cruising boat, always maintained in top condition. A beautiful three cabin Farr design ready for her next adventure. Owner is motivated, ready to move up and is looking for offers. Easy to see in Ft Lauderdale. Courtesy showings available.

Исключения

При продаже яхты исключаются личные вещи владельца.

Отказ от ответственности

Компания предоставляет описание судна или яхты добросовестно, но не может

гарантировать точность этой информации, а также не ручается за техническое состояние. Покупатель должен проинструктировать своих агентов или оценщиков исследовать представленную информацию более подробно, по собственному желанию. Продажа судна или яхты, изменение цены или снятие с продажи будет происходить без предварительного уведомления.

ФОТОГРАФИИ

Salon dining



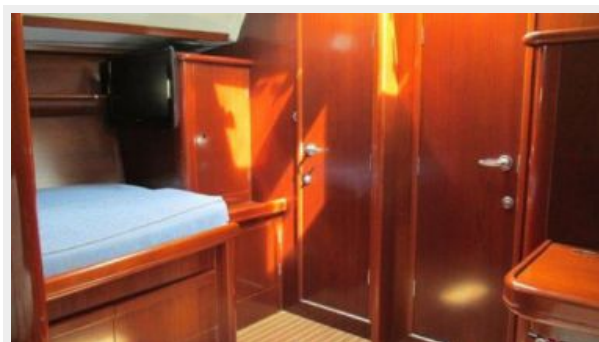
Salon Seating



Galley



Nav Station



Master Cabin



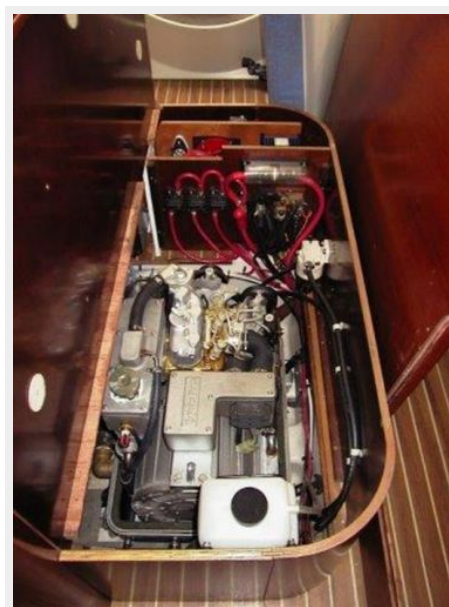
Aft Guest Cabin



Aft Guest Cabin



Generator



Head and shower



Foredeck



Headsail Roller Furler



Cockpit



Swim Platform



Tender



Exit Strategy



КОНТАКТЫ

Андрей Шестаков (Andrey Shestakov) – ведущий яхтенный брокер отдела продаж яхт и судов компании Shestakov Yacht Sales Inc. Официальный представитель Shestakov Yacht Sales Inc. для русскоговорящих клиентов в центральном офисе компании в Майами/Форт Лодердейл/Флорида/США.

Контактная информация

Email: andrey@shestakovyachtsales.com

Web: shestakovyachtsales.com

Телефоны

Краснодарский край: **+7(918)465-66-44**

США, Майами, Флорида: **+1(954)274-4435**

Время работы

Понедельник – Суббота: **9:00 - 21:00**
EDT

Воскресенье: **Закрето**

Адрес



Harbour Towne Marina, 850 NE 3rd St,
STE 213, Dania, FL 33004