

CHRISTINE — CABO



Builder: CABO

Year Built: 1997

Model: Sport Fisherman

Price: PRICE ON APPLICATION

Location: United States

LOA: 31' 0" (9.45m)

Beam: 12' 5" (3.78m)

Min Draft: 3' 2" (0.97m)

Cruise Speed: 24 Kts. (28 MPH)

Max Speed: 28 Kts. (32 MPH)

Our experienced yacht broker, Andrey Shestakov, will help you choose and buy a yacht that best suits your needs **CHRISTINE — CABO** from our catalogue. Presently, at Shestakov Yacht Sales Inc., we have a wide variety of yachts available on our sale's list. We also work in close contact with all the big yacht manufacturers from all over the world.

If you would like to buy a yacht **CHRISTINE — CABO** or would like help answering any questions concerning purchasing, selling or chartering a yacht, please call **+1(954)274-4435**

TABLE OF CONTENTS

TABLE OF CONTENTS	2
SPECIFICATIONS	5
Overview	5
Basic Information	5
Dimensions	5
Speed, Capacities and Weight	5
Accommodations	5
Hull and Deck Information	6
Engine Information	6
DETAILED INFORMATION	7
Accommodations	7
Main Cabin	7
Head	7
Galley, Amidship Port	7
Helm / Electronics and Navigation	8
Deck	8
Engine and Mechanical Equipment	9
Electrical System / Equipment	9
Cockpit / Fishing Equipment	10
Additional Features / Equipment	10
Exclusions	10
Salesman's Comments	10
Exclusions	11
Disclaimer	11
PHOTOS	12
Front Profile	12
Main Cabin 1	12
Main Cabin 2	12

Head	12
Galley 1	12
Galley 2	12
Galley 3	13
Galley 4	13
Galley 5	13
Helm / Electronics & Navigation 1	13
Helm / Electronics & Navigation 2	13
Helm / Electronics & Navigation 3	13
Helm / Electronics & Navigation 4	13
Helm / Electronics & Navigation 5	13
Helm / Electronics & Navigation 6	14
Helm / Electronics & Navigation 7	14
Helm / Electronics & Navigation 9 - Tower Controls	14
Helm / Electronics & Navigation 8	14
Helm / Electronics & Navigation 10 - Tower Controls	14
Helm / Electronics & Navigation 11 - Tower Controls	14
Helm / Electronics & Navigation 12 - Tower Controls	15
Deck 1	15
Deck 2	15
Deck 3	15
Deck 4	15
Deck 5	15
Deck 6	16
Engine & Mechanical Equipment 1	16
Engine & Mechanical Equipment 2	16
Engine & Mechanical Equipment 3	16
Engine & Mechanical Equipment 4	16
Engine & Mechanical Equipment 5	16

Engine & Mechanical Equipment 6	16
Engine & Mechanical Equipment 7	16
Electrical System / Equipment 1 - Electrical Panel	17
Electrical System / Equipment 2 - Generator	17
Cockpit / Fishing Equipment 1	17
Cockpit / Fishing Equipment 2	17
Cockpit / Fishing Equipment 3	17
Cockpit / Fishing Equipment 4	17
Cockpit / Fishing Equipment 5	18
Cockpit / Fishing Equipment 6	18
Cockpit / Fishing Equipment 7	18
CONTACTS	19
Contact details	19
Telephones	19
Office hours	19
Address	19

SPECIFICATIONS

Overview

This is a very well equipped and cared for 31' Cabo - Cleanest 1997 on the market! It will be hard to find a better one!

Basic Information

Category: Sport Fisherman

Sub Category: Express

Model Year: 1997

Year Built: 1997

Country: United States

Vessel Top: Hardtop W/Tower

Cockpit: Yes

Dimensions

LOA: 31' 0" (9.45m)

Beam: 12' 5" (3.78m)

Min Draft: 3' 2" (0.97m)

Speed, Capacities and Weight

Cruise Speed: 24 Kts. (28 MPH)

Max Speed: 28 Kts. (32 MPH)

Displacement: 14000 Pounds

Water Capacity: 50 Gallons

Fuel Capacity: 320 Gallons

Accommodations

Sleeps: 4

Total Heads: 1

Hull and Deck Information

Hull Material: Fiberglass

Deck Material: Fiberglass

Hull Configuration: Semi Vee

Engine Information

Engines: 2

Manufacturer: Caterpillar

Model: 3116 TA

Engine Type: Inboard

Fuel Type: Diesel

DETAILED INFORMATION

Accommodations

Sleeps two owners and guests. V-berth forward with filler sleeps two plus settee sleeps two for a total of four berths. One Head with shower. Enter centerline to three steps down to Main Cabin; Head to port; L-shaped settee to starboard that converts to bunk beds, V-berth forward with filler; Galley to port with single burner stove, sink, refrigerator, small freezer and microwave oven.

Main Cabin

- Dinette
- (2) Reading lights
- Under bed storage
- Cable TV hookups
- Deck hatch opening
- Teak & holly flooring
- V-berth w/ filler forward
- Recessed Halogen lighting
- Air conditioning w/ controls
- Settee (converts to upper / lower bunks)
- 15" Flat-screen, cable TV w/ blue ray play
- Rod storage cabinets port & starboard for (8) rods
- Upgraded stereo system w/ speakers - Controls at Helm

Head

- Sink
- Towel rack
- 12v Lighting
- Custom vanity
- Medicine cabinet
- Rod storage for (3) rods
- Shower is hand-held w/ sump pump
- Holding tank, overboard, electric head

Galley, Amidship Port

- Sink
- Microwave oven

- Corian counter tops
- Teak & holly flooring
- One burner, electric stove
- Dockside fresh water system
- Stainless steel hot water heater
- AC / DC refrigerator w/ freezer

Helm / Electronics and Navigation

- EPIRB
- Sirius weather
- (2) Compasses
- SEA SSB radio
- SEA 8000 hailer
- New Icom VHF radio
- Aluminum Helm wheel
- Bonded electrical system
- (2) SEA 157 VHF radios
- (8) Shakespeare antennas
- Simrad AP300X auto pilot
- Northstar 952 XD chart plotter
- Remote for auto pilot on Tower
- Ray data display depth / temp on Tower
- (2) NAV NET 14" touch screens w/ radar, sounder, plotter

Deck

- Windlass
- Bow pulpit
- Bridge curtain
- Transom door
- (2) Helm seats
- Cockpit cover
- Spreader lights
- Anchor w/ lines
- Navigation lights
- Coaming padding
- Costa Clear front panels
- Windshield washer & wipers
- Search light w/ remote control
- Forward facing Companion seat
- Polished aluminum Marlin Tower

- West Coast polished aluminum rails
- Fresh water, salt water Deck wash down system
- Eisenglass & Costa Clear front enclosure (new 2013)

Engine and Mechanical Equipment

- Air seps
- Trim tabs
- Fuel filters
- High water alarm
- Oil pressure alarm
- Hydraulic steering
- Oil transfer system
- Fire control system
- Fiberglass fuel tank
- 120amp Alternators
- Engine synchronizers
- Hydraulic Helm Deck
- Dripless stuffing boxes
- Raw water sea strainer
- Engine fuel shut-off valve
- Engine temperature alarm
- Fresh water cooling system
- Reverse cycle air conditioner
- Acoustical, thermal insulation
- ZF 220A-1:53:1 transmission
- Y-valve emergency bilge pump
- (3) Automatic, manual bilge pumps
- Hynautic Bridge, Tower engine controls
- Twin 350 hp. Diesel I/B 1997 Caterpillar 3116 TA's w/ 1000 hrs. (1,000 hr. CAT maintenance completed)

Electrical System / Equipment

- (2) Batteries
- Battery parallel switch
- Dockside electric cable
- 12v DC electrical system
- 110v AC electrical system
- Automatic battery charger
- 30amp 50' Shore power cord
- 5kW Westerbeke generator (new 2005)

- Custom AC / DC electrical distribution panel

Cockpit / Fishing Equipment

- Fish box
- Cockpit sink
- Live fish well
- Rupp outriggers
- (6) Rod holders
- Storage cabinets
- Rupp center rigger
- Gaff racks port & starboard
- (3) Rod holders each Tower leg
- Pompanette SK-80 fighting chair
- Polished aluminum Marlin Tower
- 4-rod Rocket launcher (aft hardtop)

Additional Features / Equipment

- Trim tabs
- Engine stop
- Teak interior
- Spare props
- New props 2013
- Under water light
- Bench seat in Tower
- 4-sided Winter cover
- 17.5 degree deadrise
- 6'6" Head room in Cabin
- All aluminum glass-koted
- Custom switch panel on Tower w/ horn
- 1000 hour Caterpillar maintenance completed
- New sound system including Polk Marine speakers & Sony head unit, Sirius radio, I-pod dock controls at Helm

Exclusions

Owner's personal gear and items.

Salesman's Comments

This is a very well equipped and cared for 31' Cabo - Cleanest 1997 on market! It will be hard to find a better one!

Exclusions

Owner's personal belongings.

Disclaimer

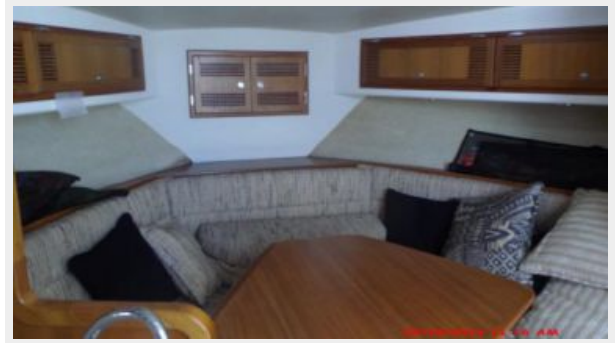
The Company offers the details of this vessel or yacht in good faith but cannot guarantee or warrant the accuracy of this information nor warrant the condition of the vessel. A buyer should instruct his representatives, agents, or his surveyors, to investigate such details as the buyer desires validated. This vessel or yacht is offered subject to prior sale, price change, or withdrawal without notice.

PHOTOS

Front Profile



Main Cabin 1



Main Cabin 2



Head



Galley 1



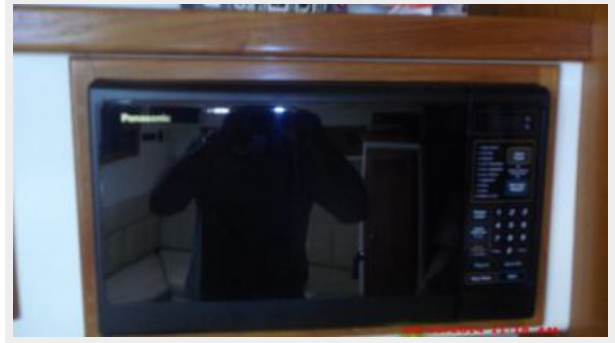
Galley 2



Galley 3



Galley 4



Galley 5



Helm / Electronics & Navigation 1



Helm / Electronics & Navigation 2



Helm / Electronics & Navigation 3



Helm / Electronics & Navigation 4



Helm / Electronics & Navigation 5



Helm / Electronics & Navigation 6



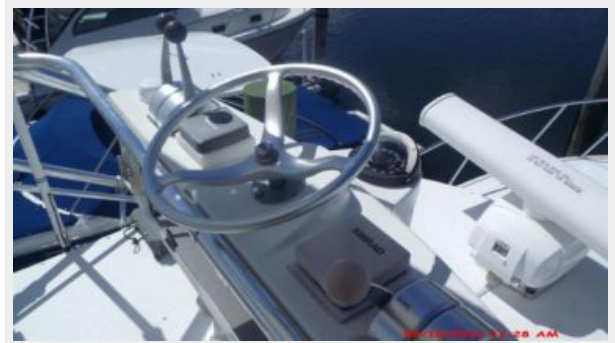
Helm / Electronics & Navigation 7



Helm / Electronics & Navigation 8



Helm / Electronics & Navigation 9 - Tower Controls



Helm / Electronics & Navigation 10 - Tower Controls



Helm / Electronics & Navigation 11 - Tower Controls



Helm / Electronics & Navigation 12 - Tower Controls



Deck 1



Deck 2



Deck 3



Deck 4



Deck 5



Deck 6



Engine & Mechanical Equipment 1



Engine & Mechanical Equipment 2



Engine & Mechanical Equipment 3



Engine & Mechanical Equipment 4



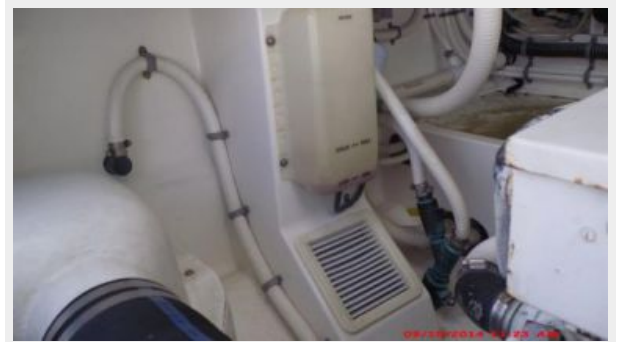
Engine & Mechanical Equipment 5



Engine & Mechanical Equipment 6



Engine & Mechanical Equipment 7



Electrical System / Equipment 1 - Electrical Panel



Electrical System / Equipment 2 - Generator



Cockpit / Fishing Equipment 1



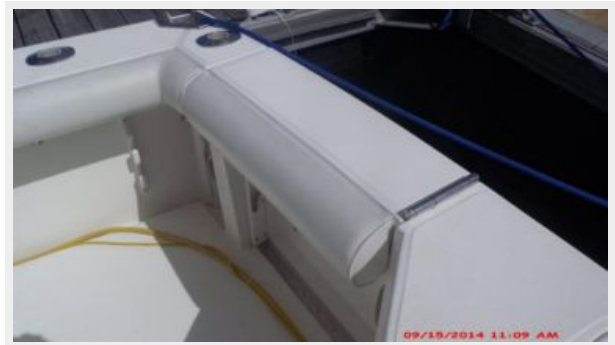
Cockpit / Fishing Equipment 2



Cockpit / Fishing Equipment 3



Cockpit / Fishing Equipment 4



Cockpit / Fishing Equipment 5



Cockpit / Fishing Equipment 6



Cockpit / Fishing Equipment 7



CONTACTS

Andrey Shestakov, leading yacht broker of the sales department of Shestakov Yacht Sales Inc. Shestakov Yacht Sales Inc., the official representative of the Miami/Fort Lauderdale FL headquarters.

Contact details

Email: andrey@shestakovyachtsales.com

Web: shestakovyachtsales.com/en/

Telephones

USA: +1(954)274-4435

Office hours

Monday – Saturday: **9:00 - 21:00** EDT

Sunday: **closed**

Address



Harbour Towne Marina, 850 NE 3rd St,
STE 213, Dania, FL 33004