

AN DICK RO — EGG HARBOR



Builder: EGG HARBOR

Year Built: 1997

Model: Sport Fisherman

Price: PRICE ON APPLICATION

Location: United States

LOA: 52' 0" (15.85m)

Beam: 16' 4" (4.98m)

Min Draft: 4' 0" (1.22m)

Cruise Speed: 25 Kts. (29 MPH)

Max Speed: 30 Kts. (35 MPH)

Our experienced yacht broker, Andrey Shestakov, will help you choose and buy a yacht that best suits your needs **AN DICK RO — EGG HARBOR** from our catalogue. Presently, at Shestakov Yacht Sales Inc., we have a wide variety of yachts available on our sale's list. We also work in close contact with all the big yacht manufacturers from all over the world.

If you would like to buy a yacht **AN DICK RO — EGG HARBOR** or would like help answering any questions concerning purchasing, selling or chartering a yacht, please call **+1(954)274-4435**

TABLE OF CONTENTS

TABLE OF CONTENTS	2
SPECIFICATIONS	3
Overview	3
Basic Information	3
Dimensions	4
Speed, Capacities and Weight	4
Hull and Deck Information	4
Engine Information	4
PHOTOS	5
CONTACTS	12
Contact details	12
Telephones	12
Office hours	12
Address	12

SPECIFICATIONS

Overview

Re-powered with CAT 3406E (2,900 hrs) New flat screen Samsung TV in Main Salon New Electronics

GALLEY • Under Counter Fridge/Freezer • Trash Compactor • Three burner cooktop • Microwave oven

Main Salon • Couch Storage and Bed • Wet bar, sink and ice maker • Carpet (installed new 1 year ago) • Teak folding table • Barrel arm chair

Flybridge • Hardtop with four sided EZ2CY Enclosure • Seating with rod storage • Refrigerator and sink • CAT control heads • Helm and companion chairs • Double spreader outrigger • Bridge rocket launcher

Electronics • Garmin GPS Plotter GPS map 5215 • Simrad CP44 Radar - Color • Flir Night Vision • Simrad AP20 Autopilot • LINC Speed Datamarine • LINC Depth Datamarine • Standard Horizon VHF • Furuno FCV color bottom sounder • Pioneer CD Player • Lewmar windlass control

Cockpit • In deck fish boxes (2) • Island bait and tackle center w/freezer, sink and tackle • Live bait well • Transom door

Engine Room • Glendening w/trolling valves • Glendening shore power reel • Service performed by Jarrett Bay • Generator 15kw (Rebuilt by Key Diesel 12 months ago) 4,200hrs

Basic Information

Category: Sport Fisherman

Sub Category: Sport Fisherman

Model Year: 1997

Year Built: 1997

Country: United States

Vessel Top: 2363

Fly Bridge: Yes

Cockpit: Yes

Dimensions

LOA: 52' 0" (15.85m)

Beam: 16' 4" (4.98m)

Min Draft: 4' 0" (1.22m)

Speed, Capacities and Weight

Cruise Speed: 25 Kts. (29 MPH)

Max Speed: 30 Kts. (35 MPH)

Displacement: 52000 Pounds

Water Capacity: 175 Gallons

Holding Tank: 60 Gallons

Fuel Capacity: 900 Gallons

Hull and Deck Information

Hull Material: Fiberglass

Engine Information

Engines: 2

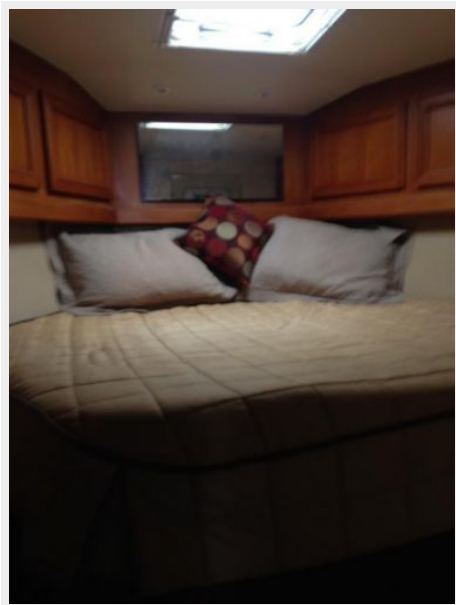
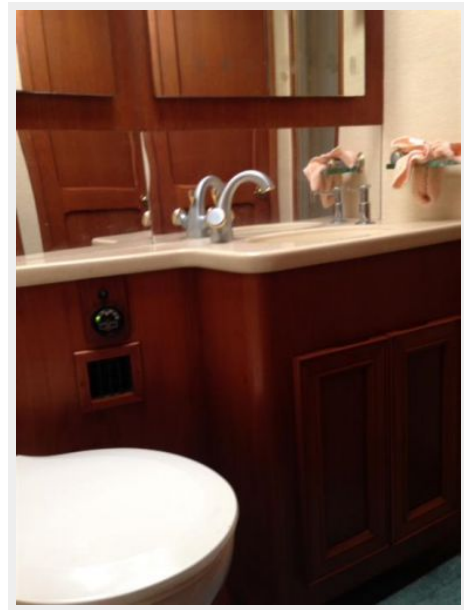
Manufacturer: Caterpillar

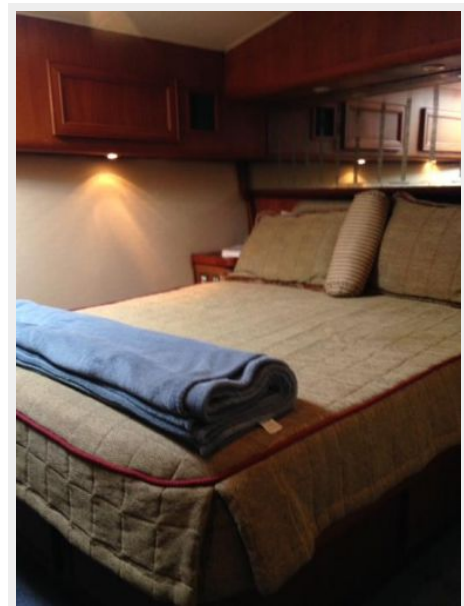
Model: 3406E

Engine Type: Inboard

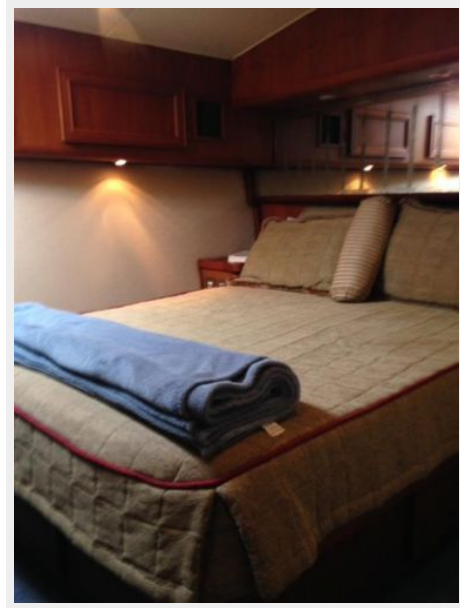
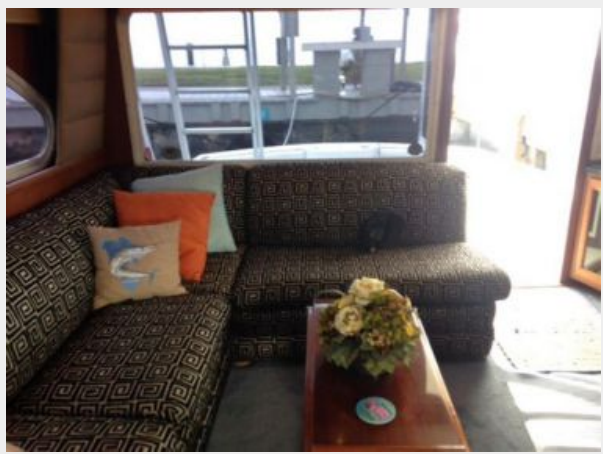
Fuel Type: Diesel

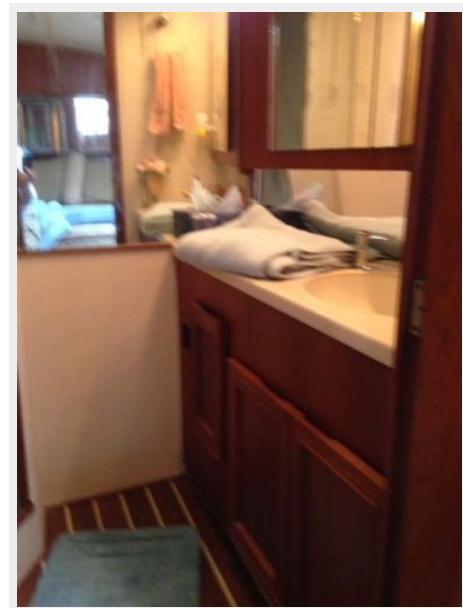
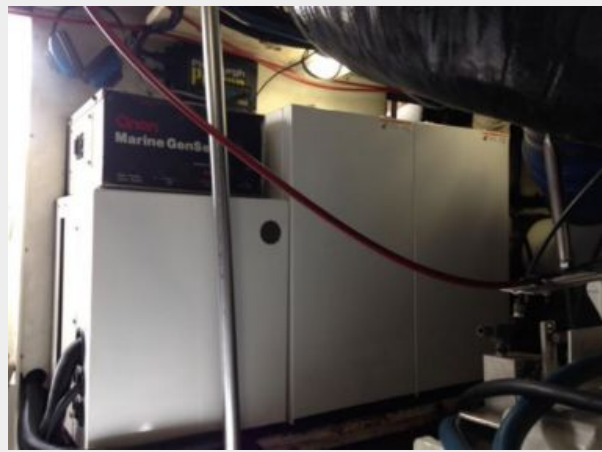
PHOTOS



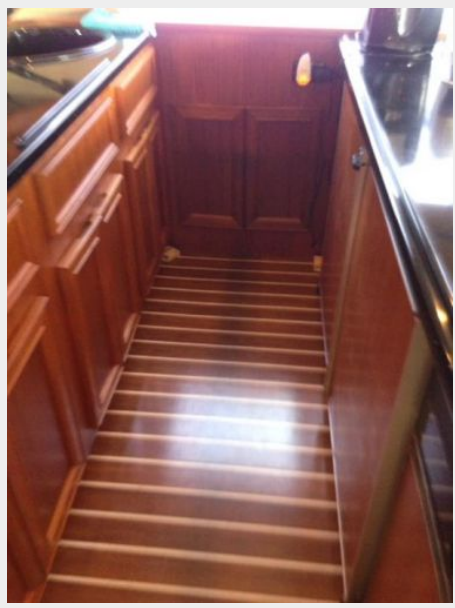












CONTACTS

Andrey Shestakov, leading yacht broker of the sales department of Shestakov Yacht Sales Inc. Shestakov Yacht Sales Inc., the official representative of the Miami/Fort Lauderdale FL headquarters.

Contact details

Email: andrey@shestakovyachtsales.com

Web: shestakovyachtsales.com/en/

Telephones

USA: +1(954)274-4435

Office hours

Monday – Saturday: **9:00 - 21:00** EDT

Sunday: **closed**

Address



Harbour Towne Marina, 850 NE 3rd St,
STE 213, Dania, FL 33004