

## KALEY MARIE — ALBEMARLE



**Builder:** ALBEMARLE

**LOA:** 31' 0" (9.45m)

**Year Built:** 2005

**Beam:** 11' 0" (3.35m)

**Model:** Sport Fisherman

**Price:** PRICE ON APPLICATION

**Location:** United States

Our experienced yacht broker, Andrey Shestakov, will help you choose and buy a yacht that best suits your needs **KALEY MARIE — ALBEMARLE** from our catalogue. Presently, at Shestakov Yacht Sales Inc., we have a wide variety of yachts available on our sale's list. We also work in close contact with all the big yacht manufacturers from all over the world.

If you would like to buy a yacht **KALEY MARIE — ALBEMARLE** or would like help answering any questions concerning purchasing, selling or chartering a yacht, please call **+1(954)274-4435**

# TABLE OF CONTENTS

TABLE OF CONTENTS	2
SPECIFICATIONS	4
Overview	4
Basic Information	4
Dimensions	4
Speed, Capacities and Weight	4
Accommodations	4
Hull and Deck Information	5
Engine Information	5
DETAILED INFORMATION	6
Accommodations	6
Main Cabin	6
Head	6
Galley, Below Deck, Amidship	6
Helm / Electronics and Navigation	6
Marlin Tower	7
Deck	7
Engine and Mechanical Equipment	7
Electrical System / Equipment	8
Cockpit / Fishing Equipment	8
Exclusions	8
Salesman's Comments	8
Exclusions	9
Disclaimer	9
PHOTOS	10
Profile 3	10
Profile 2	10
Main Cabin 1	10

---

Main Cabin 2	10
Head	11
Main Cabin 3 - Flat-Screen TV	11
Helm / Electronics & Navigation 2 - Single Lever Controls	11
Helm / Electronics & Navigation 1	11
Helm / Electronics & Navigation 3 - Tower Electronics	12
Deck - Marlin Tower View	12
Engine & Mechanical Equipment 2 - Oil Change System	12
Engine & Mechanical Equipment 1	12
Electrical System / Equipment - Generator	12
Cockpit / Fishing Equipment - Transom	12
<b>CONTACTS</b>	<b>13</b>
Contact details	13
Telephones	13
Office hours	13
Address	13

---

# SPECIFICATIONS

---

## Overview

---

The 31' Albemarle is one of the finest production Express Boats in her class! You will not find a nicer 31' on today's market. This boat has everything you need to fish the blue water! Fishing or cruising she is dry, smooth and comfortable! **OWNER WANTS SOLD - ACT NOW!!!**

## Basic Information

---

**Category:** Sport Fisherman

**Sub Category:** Express

**Model Year:** 2005

**Year Built:** 2005

**Country:** United States

**Vessel Top:** Hardtop W/Tower

**Cockpit:** Yes

## Dimensions

---

**LOA:** 31' 0" (9.45m)

**Beam:** 11' 0" (3.35m)

**MFG Length:** 32' 2" (9.80m)

## Speed, Capacities and Weight

---

**Displacement:** 15500 Pounds

**Water Capacity:** 30 Gallons

**Fuel Capacity:** 325 Gallons

## Accommodations

---

**Sleeps:** 4

**Total Heads:** 1

---

## Hull and Deck Information

---

**Hull Material:** Fiberglass

**Deck Material:** Fiberglass

**Hull Configuration:** Semi Vee

**Hull Color:** White

---

## Engine Information

---

**Engines:** 2

**Manufacturer:** Yanmar

**Model:** 370

**Engine Type:** Inboard

**Fuel Type:** Diesel

---

# DETAILED INFORMATION

---

## Accommodations

---

Spacious Cabin with sleeping accommodations for four owners and guests. Forward V-berth with filler cushion sleeps two plus Pullman berths sleep two for a total of four berths. One Head with shower.

## Main Cabin

---

- TV
- VCR
- Closet
- Cushions
- Hi - Lo table
- Pullman berths
- V-berth forward
- Overhead rod storage
- Storage under V-berth
- Air conditioning / heater with controls
- Stereo system w/ CD player, speakers

## Head

---

- Sink
- Hand-held shower
- Overboard, holding tank, electric head

## Galley, Below Deck, Amidship

---

- Sink
- Microwave oven
- Refrigerator w/ freezer
- Water heater (inoperable)
- Pressure fresh water system

## Helm / Electronics and Navigation

---

- Compass
- Transducer

- ACR spot light
- Simrad AP26 auto pilot
- Icom M-424 VHF radio
- (2) Furuno NAV NET displays

---

## Marlin Tower

---

- ACR spot light
- Furuno NAV NET
- Simrad AP16 auto pilot
- Standard Horizon VHF radio

---

## Deck

---

- Bow pulpit
- Marlin Tower
- Docking lights
- Transom lights
- Transom door
- Spreader lights
- Anchor w/ lines
- Navigation lights
- Coaming padding
- Maxwell electric windlass
- Fixed, electric search light
- Windshield washer & wipers
- Fresh water, salt water, pressure Deck wash down system

---

## Engine and Mechanical Equipment

---

- Trim tabs
- Fire alarm
- Fuel filters
- Bilge blower
- Smoke alarm
- Battery alarm
- Hydraulic steering
- Oil pressure alarm
- Oil transfer system
- Fire control system
- Fresh water cooling

- Halon fire extinguisher
- Raw water sea strainer
- Engine temperature alarm
- Engine fuel shut-off valve
- (2) Automatic bilge pumps
- Reverse cycle air conditioner
- Bridge, Tower engine controls
- Twin 370 hp. Diesel I/B 2005 Yanmar 370's w/ 1050 hrs.

---

## Electrical System / Equipment

---

- Dockside cables
- Battery parallel switch
- 12v DC electrical system
- Automatic battery charger
- 110v AC electrical system
- (3) New 2014 27 Series batteries
- Westerbeke 5kW generator w/ 225 hrs.

---

## Cockpit / Fishing Equipment

---

- Fish box
- Outriggers
- Cockpit sink
- Live fish well
- Marlin Tower
- (2) Swivel rod holders
- (6) Rod holders in gunnel
- (10) Rod holders on Tower
- 4-rod Rocket launcher w/ gimbal

---

## Exclusions

---

Owner's personal gear and items.

---

## Salesman's Comments

---

The 31' Albemarle is one of the finest production Express Boats in her class! You will not find a nicer 31' on today's market. This boat has everything you need to fish the blue water! Fishing or cruising she is dry, smooth and comfortable! **OWNER WANTS SOLD - ACT NOW!!!**



---

## Exclusions

---

Owner's personal belongings.

---

## Disclaimer

---

The Company offers the details of this vessel or yacht in good faith but cannot guarantee or warrant the accuracy of this information nor warrant the condition of the vessel. A buyer should instruct his representatives, agents, or his surveyors, to investigate such details as the buyer desires validated. This vessel or yacht is offered subject to prior sale, price change, or withdrawal without notice.

# PHOTOS

**Profile 2**



**Profile 3**



**Main Cabin 1**



**Main Cabin 2**



## Head

### Main Cabin 3 - Flat-Screen TV



### Helm / Electronics & Navigation 1



### Helm / Electronics & Navigation 2 - Single Lever Controls



### Helm / Electronics & Navigation 3 - Tower Electronics



### Deck - Marlin Tower View



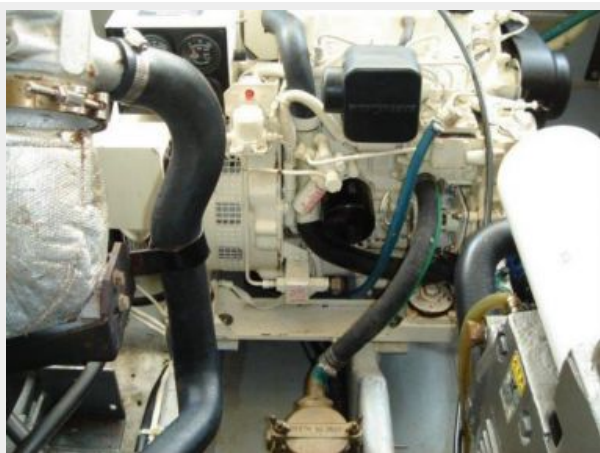
### Engine & Mechanical Equipment 1



### Engine & Mechanical Equipment 2 - Oil Change System



### Electrical System / Equipment - Generator



### Cockpit / Fishing Equipment - Transom



---

# CONTACTS

---

Andrey Shestakov, leading yacht broker of the sales department of Shestakov Yacht Sales Inc. Shestakov Yacht Sales Inc., the official representative of the Miami/Fort Lauderdale FL headquarters.

---

## Contact details

---

Email: [andrey@shestakovyachtsales.com](mailto:andrey@shestakovyachtsales.com)

Web: [shestakovyachtsales.com/en/](http://shestakovyachtsales.com/en/)

---

## Telephones

---

USA: +1(954)274-4435

---

## Office hours

---

Monday – Saturday: **9:00 - 21:00** EDT

Sunday: **closed**

---

## Address

---



Harbour Towne Marina, 850 NE 3rd St,  
STE 213, Dania, FL 33004