

MIZAR — BENETTI



Builder: BENETTI

Year Built: 1973

Model: Motor Yacht

Price: PRICE ON APPLICATION

Location: France

LOA: 103' 5" (31.50m)

Beam: 20' 5" (6.20m)

Min Draft: 8' 7" (2.60m)

Max Draft: 9' 9" (2.95m)

Cruise Speed: 10 Kts. (12 MPH)

Max Speed: 12 Kts. (14 MPH)

Our experienced yacht broker, Andrey Shestakov, will help you choose and buy a yacht that best suits your needs **MIZAR — BENETTI** from our catalogue. Presently, at Shestakov Yacht Sales Inc., we have a wide variety of yachts available on our sale's list. We also work in close contact with all the big yacht manufacturers from all over the world.

If you would like to buy a yacht **MIZAR — BENETTI** or would like help answering any questions concerning purchasing, selling or chartering a yacht, please call **+1(954)274-4435**

TABLE OF CONTENTS

TABLE OF CONTENTS	2
SPECIFICATIONS	3
Overview	3
Basic Information	3
Dimensions	3
Speed, Capacities and Weight	4
Accommodations	4
Hull and Deck Information	4
Engine Information	4
DETAILED INFORMATION	5
Accommodations	5
Machinery	5
Galley & Laundry	5
Communication & Navigation	5
Entertainment	6
Tenders & Toys	6
Deck Equipment	6
Safety & Security	6
Refit	7
Exclusions	7
Disclaimer	7
PHOTOS	8
CONTACTS	9
Contact details	9
Telephones	9
Office hours	9
Address	9

SPECIFICATIONS

Overview

The beautiful gentleman yacht MIZAR is a 32 meters displacement (104 foot) super-yacht built by the Benetti yard in 1973, but after a rebuild in 2000 is as new.

Super-yacht MIZAR can welcome a total of 11 people on board and 7 crew members, quite a large number for a yacht of such a size. This "impeccable conditions" super-yacht was designed by the naval architecture of Fratelli Benetti in Viareggio.

Major refit in 2000. All the interior was replaced, new engines and generators, new equipment in engine room. Hull and Superstructure checked and repaired as necessary. New electrical system installed. New teak decks. Total painting cycle applied on the hull and Superstructure. New electronics equipment in wheelhouse, new tenders cranes, new side ladder. Complete Repaint in 2010.

Basic Information

Category: Motor Yacht

Model Year: 1973

Year Built: 1973

Refit Year: 2000

Country: France

Dimensions

LOA: 103' 5" (31.50m)

LWL: 91' 3" (27.80m)

Beam: 20' 5" (6.20m)

Min Draft: 8' 7" (2.60m)

Max Draft: 9' 9" (2.95m)

Speed, Capacities and Weight

Cruise Speed: 10 Kts. (12 MPH)

Cruise Speed Range: 2000

Max Speed: 12 Kts. (14 MPH)

Displacement: 443129.14662 Pounds

Gross Tonnage: 167 Pounds

Water Capacity: 2377.548468 Gallons

Fuel Capacity: 9246.02182 Gallons

Accommodations

Total Cabins: 4

Sleeps: 11

Total Heads: 4

Captain Cabin: True

Crew Cabin: 4

Crew Berths: 7

Crew Sleeps: 7

Crew Heads: 4

Hull and Deck Information

Hull Material: Steel

Exterior Designer: Fratelli Benetti

Engine Information

Engines: 2

Manufacturer: MTU

Model: 12 V 183TE93

Engine Type: Inboard

Fuel Type: Diesel

DETAILED INFORMATION

Accommodations

Guest Cabins: Aft: 1 x Guest cabin with two single beds, 2 x pullman and bathroom 1 x Guest cabin with double bed and bathroom Forward: 1 x large VIP cabin with double bed and bathroom Main deck: 1 x Owner suite with double bed, bathroom and Private office Crew: Fore: 3 x Cabins with 2 single beds with bathrooms Bridge deck: 1 x Captain Cabin with queen-size bed and bathroom

Machinery

PROPULSION: PROP SHAFT GEARBOXES: ZF Marine Straight gearbox BW 155.1 (1,743:1 Reduction ratio) STEERING: Hydraulic steering system with manual override R.S. Equip Service steering system with ICME T90S 4 hydraulic pump STABILIZERS: Koopnautic Fin stabilizers. PTO on both main engines and electric PTO pump Koopnautic Roll Sensing Device + FAL-124-S Control unit on Bridge GENERATORS: 2 x Kohler 55 EFOZ 1 x Kohler 17,5 E FOZD (Night) ELECTRICITY: 380 tri-phase 50hz - 220V mono-phase 50hz SHORE POWER: 120 Amp connection with converter in lazarette BATTERIES: 1600 Ah Gel type (Engine, Gen, Service, EMG) New 2013 Mastervolt MASS 24/2500 charger for inverter Mastervolt MASS 24/100 charger for service batteries Mastervolt MASS 24/50 charger for engine batteries Mastervolt MASS 24 charger for generator batteries AIR CONDITIONING:FRIGIT A/C system with 2 x compressors, Digital control pannels in each zone and local fancoils. OTHER MACHINERY Alfa Laval fuel cleaner Idromar water makers Air compressor ABT Hydraulic bow thruster Koopnautic stabilizers 2 x gianneschi & ramacciotti ACM-501-8T fire/bilge pumps 2 x 150 litre Styleboiler water heaters 2 x saltwater toilet pumps with pressure bladder 2 x freshwater toilet pumps 2 x circulation pumps for A/C 3 x Racor filters on each main engine 2 x Hydraulic PTO on main engines 4 x Unite Hermetique fridge compressors A/C frigit 2 x compressors + frigit digital controls + fancoils im eachone FRIDGE: 4 x compressors unite hermetique

Galley & Laundry

Galley Equipment: MIELE dish washer G7856 (2013) New Commercial hob (2013) New Commercial oven (2013) Gaggenau Microwave EM203-130 4 x Frigit inox custom fridges(Galley and crew mess) 4 x Frigit inox custom freezers (Galley and crew mess) 2 x Ice makers 2 x Frigo bars Laundry Equipment: 2 x MIELE professional wash machine WS 5425 LP Built-in Ironing board in crew mess 2 x MIELE professional dryers T 5206 2 x Frigit freezer Crew:2 x Frigit Fridge

Communication & Navigation

Communication: VHF Simrad RS 87 Seatel DBS/DTH antennae (2003) - costal 24 antennae

(2010) VHF Furuno FM 8500 SSB Furuno FS 1561 15 Satnav phone Simrad Navtex plus Panasonic KX T7536 Panasonic D 1232 PABX Inmarbat mini - L Furuno Simrad MS-50 SAT phone 2400 Fax by brother (owner office) computer station (office) Navigation: Radar Furuno 15 inch color 2F remote engine control Radar Furuno 10 inch 8 Tone Geonav Plotter 11C Net Furuno GP 32 GAS / WAAS Deep Sounder Furuno FCV 581L Furuno GPS Navigator Compass SAT Simrad MX510 Raymarine Tridata speed /perth / log Repeater Simrad AR 78 Autopilot Robertson AP9 MK3 Fuuno heading sensor c-200 2F remote engine control * Robertson wired thruster + Helm control (remote) Simrad MX 510 GPS navigation system 2012 Simrad MX 510 GPS navigation system 2012 Furuno FR 1510 ** 15" arpa Furuno 1932 8 " radar Max sea time zero 1.9.0.17801 version ONE-machines computers with 15" screen American bow th** ston control Raymarine st 60+ wind Robertdon F491 helm control Geo nav IIC NET plotter Robertson AOQ MK3 autopilot Simrad AR - 78 true north compass Kocpnautic roll sensing device + FAL - 124 S control unit

Entertainment

SAT TV antenna Seatel TAC 92 Radio CD player in each cabin SALOON: Bose Acoustimasss-12 DVD / surround system Sky HD receiver Sony DVP - VS 300 DVD Sony SKV - SE 610 VHS Hitachi surround AV controler Hitachi LL 37' PD 2100 M 300 TV OWNER: Sharp LC - 20' V M 2 TV Samsung DVD - V6700 DVD/ VHS combo Sony micro HI-FI cmt -rbs with Sony XPLOD speakers (2) Nokia DVB 96 50 S receiver CREW: Sky decoder Philips 15' LCD Sony SLV - SE 610 vhs

Tenders & Toys

Tender Novurania MX 460DL with Yamaha outboard F80 Jet ski Yamaha Superjet Jet ski Seadoo RXP 190kw 3 Canoes Snorkeling equipment SeaDoo

Deck Equipment

1 Windlass with double barboten 2 x aft capstans with 2,6 kW electric engines 2 cranes Sanguinetti 1000 kg each Fenders Flag pole 1 side ladder with electrical winch movement Removable passerella with electrical winch movement 1 Dive compressor

Safety & Security

Video surveillance Majestic 13 (4 cameras, 2 monitors) 4 x life raft zodiac 1 x Epirb McMurdo 1 x Sart - Serpe 4 x lifebuoy 4 x Throwing 3 x medical kits 1 x fire signal kit 1 x oxygen bottle 2 x first aid kits 1 x fire blanket 5 x suits EN ISO 15027-1 22 x life jackets 18 x hand extinguishers 3 x CO2 bottles (extinguisher system for ER) Minerva T 1008 Fire alarm system Rebuilt Alarm system 2013 Sicurit camera system color with 4 cameras

Refit

Major refit in 2000. All the interior replaced, new engines and generators, new equipment in engine room. Hull and Superstructure checked and repaired as necessary. New electrical system installed. New teak decks. Total painting cycle applied on the hull and Superstructure. New electronics equipment in wheelhouse, new tenders cranes, new side ladder. Complete repaint in 2010.

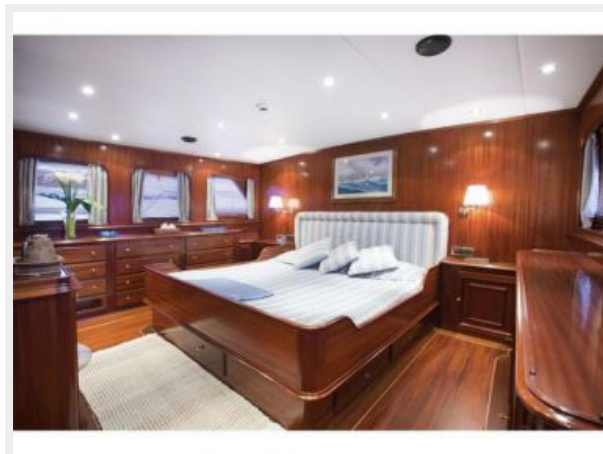
Exclusions

Owner's personal belongings.

Disclaimer

The Company offers the details of this vessel or yacht in good faith but cannot guarantee or warrant the accuracy of this information nor warrant the condition of the vessel. A buyer should instruct his representatives, agents, or his surveyors, to investigate such details as the buyer desires validated. This vessel or yacht is offered subject to prior sale, price change, or withdrawal without notice.

PHOTOS



CONTACTS

Andrey Shestakov, leading yacht broker of the sales department of Shestakov Yacht Sales Inc. Shestakov Yacht Sales Inc., the official representative of the Miami/Fort Lauderdale FL headquarters.

Contact details

Email: andrey@shestakovyachtsales.com

Web: shestakovyachtsales.com/en/

Telephones

USA: +1(954)274-4435

Office hours

Monday – Saturday: **9:00 - 21:00** EDT

Sunday: **closed**

Address



Harbour Towne Marina, 850 NE 3rd St,
STE 213, Dania, FL 33004