

OUR TRADE — BERTRAM



Builder: BERTRAM

Year Built: 2007

Model: Motor Yacht

Price: PRICE ON APPLICATION

Location: United States

LOA: 63' 0" (19.20m)

Beam: 18' 1" (5.51m)

Max Draft: 5' 3" (1.60m)

Our experienced yacht broker, Andrey Shestakov, will help you choose and buy a yacht that best suits your needs **OUR TRADE — BERTRAM** from our catalogue. Presently, at Shestakov Yacht Sales Inc., we have a wide variety of yachts available on our sale's list. We also work in close contact with all the big yacht manufacturers from all over the world.

If you would like to buy a yacht **OUR TRADE — BERTRAM** or would like help answering any questions concerning purchasing, selling or chartering a yacht, please call **+1(954)274-4435**

TABLE OF CONTENTS

TABLE OF CONTENTS	2
SPECIFICATIONS	5
Overview	5
Basic Information	5
Dimensions	5
Speed, Capacities and Weight	5
Accommodations	5
Hull and Deck Information	5
Engine Information	6
DETAILED INFORMATION	7
Remarks	7
Salon	7
Galley and Dinette	7
Companionway	8
Master Stateroom	8
Guest Stateroom Starboard	8
Forward Sateroom	9
Guest Stateroom Port	9
Heads	9
Flybridge	9
Electronics	10
Electrical System	10
Cockpit	10
Deck Equipment	11
Engine Room and Mechanical Equipment	11
Exclusions	11
Disclaimer	11
Exclusions	12

Disclaimer	12
PHOTOS	13
Salon Seating	13
Salon Seating	13
Salon	13
Salon	13
Dinette	13
Galley	13
Galley	14
Sub Zeros	14
Laundry	14
Dishwasher	14
Electrical Panel	14
Master Stateroom	14
Master Stateroom	15
Master Stateroom	15
Master Head	15
Master Head	15
VIP Head	16
VIP Stateroom	16
Guest Stateroom	16
Twin Stateroom	16
Guest Head	17
Helm	17
Helm	17
Helm Seating	17
Flybridge	17
Mezzanine Seating	17
Cockpit	18

Cockpit	18
Fighting Chair	18
Fighting Chair	18
Cockpit	18
Cockpit	18
Engine Compartment	19
Logo	19
Starboard Engine	19
Engine Room	19
Ice Chipper	19
Water Maker	19
Starboard Generator	20
Port Generator	20
Props Reconditioned	20
Boot Stripe	20
New Bottom Job	20
Port Profile	20
Starboard Profile	21
CONTACTS	22
Contact details	22
Telephones	22
Office hours	22
Address	22

SPECIFICATIONS

Overview

Galati Yacht Sales has been committed to exceeding the expectations of its customers for more than 42 years, and we understand that purchasing a boat is a big decision. Our professional staff is here to assist you in every way – before, during and after the sale. Please feel free to contact us with any questions that you may have.

Basic Information

Category: Motor Yacht

Sub Category: Convertible

Model Year: 2007

Year Built: 2007

Country: United States

Dimensions

LOA: 63' 0" (19.20m)

Beam: 18' 1" (5.51m)

Max Draft: 5' 3" (1.60m)

Speed, Capacities and Weight

Displacement: 95600 Pounds

Water Capacity: 251 Gallons

Holding Tank: 101 Gallons

Fuel Capacity: 1850 Gallons

Accommodations

Total Cabins: 4

Hull and Deck Information

Hull Material: Fiberglass

Engine Information

Engines: 2

Manufacturer: Caterpillar

Model: C-32A

Engine Type: Inboard

Fuel Type: Diesel

DETAILED INFORMATION

Remarks

The 63' Bertram continues the legacy that Bertram owners have come to love with its stout, solid comfortable head sea ride. The 63' does it at a 34 knot cruise and offers a much more generous and spacious overall layout than its predecessor. A massive flybridge with more than ample seating and storage gives way to excellent view of the equally spacious cockpit with a comfortable mezzanine arrangement offering climate control and plenty of refrigeration. The mezzanine observation deck is a great vantage point for anglers and spectators alike. Entering the salon it is quickly noted why the 63' was well received.

The salon, galley and dinette arrangement is very accommodating and free flowing without a bad seat in the house. Four generous stateroom and three heads below coupled with the 63' quintessential Bertram creature comforts, this vessel is perfect for the traveling Blue water adventures who also has an appetite for action in the cockpit along the way. Our Trade is an **original owner vessel** and is priced to sell.

Salon

- U-shaped sofa with storage compartment below
- Sharp Flat Screen TV
- Storage cabinets to starboard
- Ships Service Panel to starboard
- Teak trimmed windows w/teak blinds
- Bose Home Theatre system
- Stainless wet bar sink with storage below
- Overhead lighting
- Dinette table with L-shaped settee
- Teak overhead grab rails
- Salon swing door
- Wall sconce reading light aft port

Galley and Dinette

- GE profile convection oven
- Kenyon 4 burner cooktop
- Under counter Sub-Zero refrigeration/freezer drawers
- Corian Sienna Aurora galley countertop w/bone sink
- Upper and Lower Galley storage

- Wolf conventional oven, wall mounted
- Fisher and Paykel under counter drawer style dishwasher
- Teak and holly flooring in galley and dinette
- Storage cabinets forward above dinette
- Central Vac below dinette

Companionway

- Stainless handrail
- Teak Steps
- Malber washer and dryer
- Linen closet

Master Stateroom

- Full walkaround berth w/storage below
- 15" Sharp Flat Screen TV
- Teak Headboard
- Night stands with storage below
- Wall reading sconces
- Pull out drawer aft below berth
- A/C control panel
- 110V outlet
- Panasonic audio system
- Floor to ceiling cedar lined hanging locker
- Teak accents in wall
- Full cabinet with bank of drawers
- Soffit above headboard with overhead lighting

Guest Stateroom Starboard

- Side-by-side twin berths
- Hanging cedar lined locker
- Stereo/CD player
- Night stand w/pull out drawer
- Reading lights
- A/C control panel
- 110V outlet
- Wall sconce

Forward Sateroom

- Stereo/CD player
- Wall sconces
- Split V-berth
- Upper Teak cabinet storage
- Storage drawers below berth
- Hanging cedar lined locker

Guest Stateroom Port

- Over/under bunks
- Stereo/CD player
- Hanging cedar lined locker
- Storage below lower berth
- Teak bunk rails
- Teak upper vanity cabinets

Heads

- Techma Head system
- Fiberglass molded shower(s)
- Teak face w/curved cabinetry below vanity countertop
- Storage below vanity countertop
- Mirrored cabinets above vanity counters framed in Teak
- Corian vanity countertop(s), Magna Sahara w/bone sink(s)
- 110V outlet
- 110V Blower system
- Teak and Holly sole
- Custom wall covering

Flybridge

- Fiberglass molded Helm pod with micro commander controls
- Custom aft rail system with welded rocket launcher, rod holders-fabricated with larger belly band for more room on bridge
- Recessed electronics box on electric actuator lift
- (3) Helm chairs Teak with polished stainless pedestals
- Insulated drink box and sink forward, starboard
- Storage cabinets to starboard
- Large forward u-shaped seating with room for a cocktail table - forward and port
- (15) Rod Rocket Launcher

- Courtesy lights
- Pipewelders hardtop with molded-in quartz lights
- 3-sided enclosure
- Powder coated grab rail starboard side of rail
- Red and Blue recessed overhead lights in hardtop
- Drink holders built into helm console

Electronics

- Garmin 8012 GPS/Chartplotter
- FURUNO NAV NET Chartplotter/Sounder/Radar
- Northstar 6000i Secondary GPS
- SIMRAD AP25 Autopilot
- Radar FURUNO 72 mile
- Sounder FURUNO 25kw
- Ritchie Compass
- Clarion stereo, CD player with satellite radio
- FURUNO GP32
- (2) ICOM 602 VHF radios
- ACR Remote spotlight
- SAT TV with (2) receivers
- KVH Tracphone

Electrical System

- 20 kw Kohler Generator w/ sound shield (1,735 hours)
- 2nd 20kw Kohler Generator (New 2012 - 813 hours)
- 220/120V AC
- 24/14V DC
- Glendenning shore cable system
- 24V 50 Amp battery charger
- Vannor Master 60 Amp battery equalizer

Cockpit

- Fishbox w/ macerator and freezer plates in cockpit sole
- Lee fighting chair with offset polished stainless pedestal
- (2) Bait freezers
- Transom molded fishbox with live well
- Mezzanine with insulated and refrigerated storage
- Teak Deck on Mezzanine

- Fiberglass molded storage locker aft of integrated fiberglass molded steps to the Flybridge
- Fresh & saltwater washdowns
- Molded-in boarding steps
- Transom door with lift up gate
- (6) Rod holders in gunwale, (2) port, (2) starboard and (2) in transom
- Rupp outriggers with Tripple Spreaders
- (2) Clearing rod holders in each cockpit wing
- Underwater lights (Deep Sea brand)

Deck Equipment

- Full Bow Rail
- Lofrans Project 1500 24 VDC Windlass with remote switch helm
- (2) Glendinning 50 amp shore power cord w/cablemaster
- Forward mounted spotlight
- Delta fast-set stainless steel anchor with 600' rode
- Ventilation hatches in foredeck

Engine Room and Mechanical Equipment

- (4) Cruise Air AC condensing units with reverse cycle heat
- (1) Separate self contained reverse cycle AC condensing unit for Mezzanine seating
- New AC condensing unit for Master (2013)
- Trim tabs
- Quicksilver galvanic isolator
- WalVac Central vac system
- Hydraulic steering system
- Oil exchange system
- (2) Engines: Caterpillar C-32A (1800 hp)
- (3) Bilge pumps forward mid and aft all rule 2000
- 3" Stainless steel shafts 5 bladed Rolla Nibrel Propellers
- FCI Aquamiser A626 Watermaker 600 GPD
- Dometic/Eskimo Ice Machine - plumbed to transom fishbox

Exclusions

Owner's personal property

Disclaimer

The Company offers the details of this vessel in good faith but cannot guarantee or warrant the

accuracy of this information nor warrant the condition of the vessel. A buyer should instruct his agents, or his surveyors, to investigate such details as the buyer desires validated. This vessel is offered subject to prior sale, price change, or withdrawal without notice.

Exclusions

Owner's personal belongings.

Disclaimer

The Company offers the details of this vessel or yacht in good faith but cannot guarantee or warrant the accuracy of this information nor warrant the condition of the vessel. A buyer should instruct his representatives, agents, or his surveyors, to investigate such details as the buyer desires validated. This vessel or yacht is offered subject to prior sale, price change, or withdrawal without notice.

PHOTOS

Salon Seating



Salon Seating



Salon



Salon



Dinette



Galley



Galley



Sub Zeros



Dishwasher



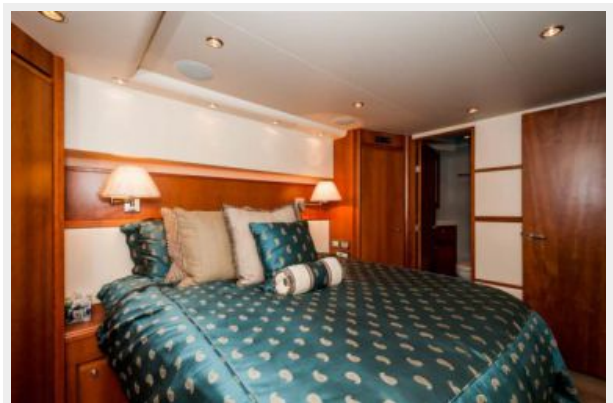
Laundry



Electrical Panel



Master Stateroom



Master Stateroom



Master Stateroom



Master Head



Master Head



VIP Stateroom



VIP Head



Twin Stateroom



Guest Stateroom



Guest Head



Helm



Helm



Helm Seating



Flybridge



Mezzanine Seating



Cockpit



Cockpit



Fighting Chair



Fighting Chair



Cockpit



Cockpit



Logo



Engine Compartment



Starboard Engine



Engine Room



Ice Chipper



Water Maker



Starboard Generator



Port Generator



Props Reconditioned



Boot Stripe



New Bottom Job



Port Profile



Starboard Profile



CONTACTS

Andrey Shestakov, leading yacht broker of the sales department of Shestakov Yacht Sales Inc. Shestakov Yacht Sales Inc., the official representative of the Miami/Fort Lauderdale FL headquarters.

Contact details

Email: andrey@shestakovyachtsales.com

Web: shestakovyachtsales.com/en/

Telephones

USA: +1(954)274-4435

Office hours

Monday – Saturday: **9:00 - 21:00** EDT

Sunday: **closed**

Address



Harbour Towne Marina, 850 NE 3rd St,
STE 213, Dania, FL 33004