

TA TA — LEGACY YACHTS



Builder: LEGACY YACHTS

Year Built: 2001

Model: Cruiser

Price: PRICE ON APPLICATION

Location: United States

LOA: 40' 0" (12.19m)

Beam: 13' 7" (4.14m)

Min Draft: 3' 0" (0.91m)

Cruise Speed: 15 Kts. (17 MPH)

Our experienced yacht broker, Andrey Shestakov, will help you choose and buy a yacht that best suits your needs Ta Ta — LEGACY YACHTS from our catalogue. Presently, at Shestakov Yacht Sales Inc., we have a wide variety of yachts available on our sale's list. We also work in close contact with all the big yacht manufacturers from all over the world.

If you would like to buy a yacht Ta Ta — LEGACY YACHTS or would like help answering any questions concerning purchasing, selling or chartering a yacht, please call +1(954)274-4435

TABLE OF CONTENTS

TABLE OF CONTENTS	2
SPECIFICATIONS	4
Overview	4
Basic Information	4
Dimensions	4
Speed, Capacities and Weight	4
Accommodations	5
Hull and Deck Information	5
Engine Information	5
DETAILED INFORMATION	6
Exterior Equipment & Features	6
Accommodations	6
Electrical	7
Engine Room & Mechanical	7
Helm & Electronics Features	8
Performance	8
Brokerage	8
Exclusions	8
Disclaimer	8
PHOTOS	10
profile hauled	10
San Juan sun shade, cockpit	10
side deck walk around	10
varnished rails	10
jet intake	11
bow, hauled	11
bow berth as V, 2 singles	11
bow berth as island queen, top mattress	11

galley down	12
galley	12
cockpit seating and table	12
cockpit seating and table, cushions on	13
saloon fwd	14
saloon aft	14
helm	14
CONTACTS	19
Contact details	19
Telephones	19
Office hours	19
Address	19

SPECIFICATIONS

Overview

Very healthy good looking boat. Legacy quality and caring owner.

Twin Cummins diesels with Jet drives and joystick handling.

2 staterooms & 2 heads

Galley down with propane stove

bow thruster, shallow draft, reduced exhaust

side deck access door

cockpit San Juan sunshade and seating

Maybe the perfect cruising package for you.

Basic Information

Category: Cruiser

Sub Category: Downeast

Model Year: 2001

Year Built: 2001

Country: United States

Dimensions

LOA: 40' 0" (12.19m)

LWL: 36' 0" (10.97m)

LOD: 40' 0" (12.19m)

Beam: 13' 7" (4.14m)

Min Draft: 3' 0" (0.91m)

Speed, Capacities and Weight

Cruise Speed: 15 Kts. (17 MPH)

Water Capacity: 120 Gallons

Holding Tank: 40 Gallons

Fuel Capacity: 410 Gallons

Accommodations

Total Cabins: 2

Total Heads: 2

Hull and Deck Information

Hull Material: Fiberglass

Engine Information

Engines: 2

Manufacturer: Cummins

Model: 370B

Engine Type: Inboard

Fuel Type: Diesel

DETAILED INFORMATION

Exterior Equipment & Features

- Cockpit San Juan sunshade
- transom door
- swim platform
- teak cockpit
- cockpit table
- teak folding varnished bench seating forward and aft facing with ivory Sunbrella with blue piping
- propane locker, fiberglass
- transom shower
- electric anchor windlass & washdown
- wide side decks
- hand rails and bow rail
- Stamoid cockpit cover
- covers for all windows
- stainless hardtop cradles for kayaks
- flag blue hull Awlgrip
- varnished teak toe rails with covers
- 40# Manson SS anchor 85' chain, 150' rode
- Secondary anchor Fortress with 175' rode
-

Accommodations

Open bright **saloon** with helm and companion seats covered in milkweed ultra leather with blue piping.

starboard settee converts to a single berth

Air conditioning & heat

L settee to port that with custom table. Entertainment center to starboard with overhead drop down TV screen. Port & Starboard sliding side deck access doors. Teak and holly cabin sole, overhead hatches, custom high gloss burled table.

GALLEY:

3 burner propane stove

Grunert refrig/freezer holding plate system with external temp gauges

polished double stainless steel sink

convection microwave oven

pantry storage area and lockers/drawers for pots & pans

Guest Cabin:

Down, across from the galley is the private guest cabin that sleeps two in & lower berth that pulls out to a double and one in overhead single berth. En suite private head with sink & opening port.

Master Bow Cabin:

- V berth with filler or queen
- custom queen memory foam mattress topper
- flexible bow berth option
- small desk, built in
- drawers & 2 hanging lockers
- overhead hatches and ports
- en suite head with large shower stall & vacuflush head
- teak & holly cabin sole

Electrical

Generator 5.5KW Northern Lights with _1860_ hours

- House 2 8D gel batteries, 1 4D gel port, 2 4D gel stbd, 1 12v gen
- 12,000 btu A/C unit
- 16,000 btu AC unit
- 50 amp shore power
- 2 battery chargers, automatic

Engine Room & Mechanical

- Fire system
- oil change system
- engine auto synch

-

Helm & Electronics Features

- ACR spotlight
- Raymarine ST40
- Northstar 6100I color plotter 15"
- Ultra Jet stick control
- Side Power bow thruster
- Icom M-127 VHF radio
- Simrad AP20 Auto Pilot
- Furuno 841 4KW radar
- helm & companion seats starboard side & companion seat to port
- dual overhead fans
- 3 x windshield wipers with washers
- 3 high water alarms
- QL digital trim controls
-

Performance

Cruise at 8 knots @ 10 gallons per hour

Cruise at 12 knots @ 20 gallons per hour

Capable of speeds 18-20 knots at WOT

Brokerage

Please Read: The Company offers the details of this vessel in good faith but cannot guarantee or warrant the accuracy of this information nor warrant the condition of the vessel. A buyer should instruct his agents, or his surveyors, to investigate such details as the buyer desires validated. This vessel is offered subject to prior sale, price change, or withdrawal without notice.

Exclusions

Owner's personal belongings.

Disclaimer

The Company offers the details of this vessel or yacht in good faith but cannot guarantee or

warrant the accuracy of this information nor warrant the condition of the vessel. A buyer should instruct his representatives, agents, or his surveyors, to investigate such details as the buyer desires validated. This vessel or yacht is offered subject to prior sale, price change, or withdrawal without notice.

PHOTOS

profile hauled



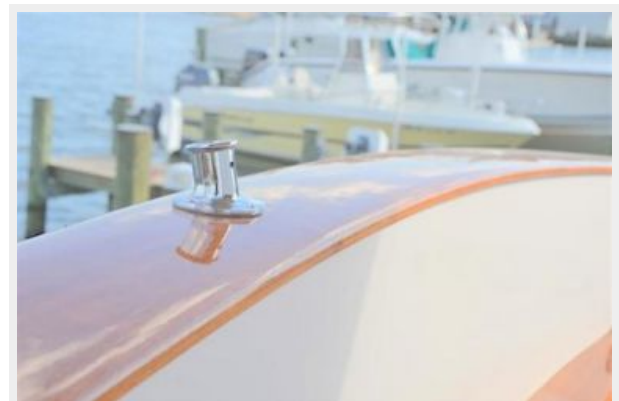
San Juan sun shade, cockpit



side deck walk around



varnished rails



jet intake



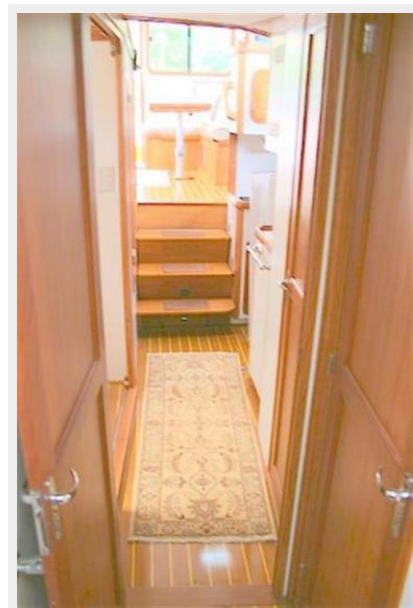
bow, hauled



bow berth as V, 2 singles



bow berth as island queen, top mattress



galley down

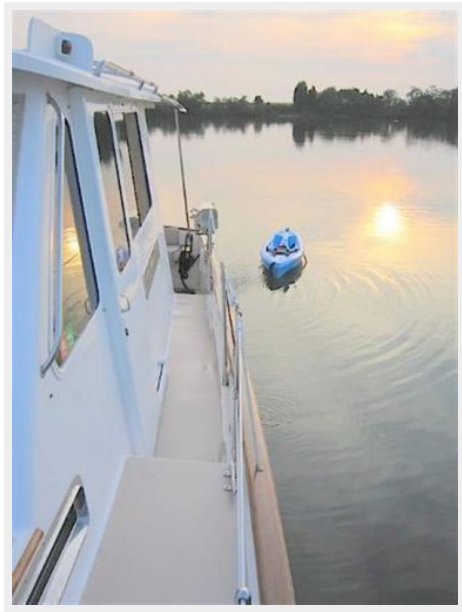


galley



cockpit seating and table





cockpit seating and table, cushions on





saloon fwd



saloon aft



helm











CONTACTS

Andrey Shestakov, leading yacht broker of the sales department of Shestakov Yacht Sales Inc. Shestakov Yacht Sales Inc., the official representative of the Miami/Fort Lauderdale FL headquarters.

Contact details

Email: andrey@shestakovyachtsales.com

Web: shestakovyachtsales.com/en/

Telephones

USA: +1(954)274-4435

Office hours

Monday – Saturday: **9:00 - 21:00** EDT

Sunday: **closed**

Address



Harbour Towne Marina, 850 NE 3rd St,
STE 213, Dania, FL 33004