

STRIDER — BRISTOL YACHTS



Builder: BRISTOL YACHTS

Year Built: 1986

Model: Center Cockpit

Price: PRICE ON APPLICATION

Location: United States

LOA: 47' 4" (14.43m)

Beam: 13' 2" (4.01m)

Min Draft: 4' 11" (1.50m)

Max Draft: 11' 0" (3.35m)

Cruise Speed: 7 Kts. (8 MPH)

Max Speed: 8 Kts. (9 MPH)

Our experienced yacht broker, Andrey Shestakov, will help you choose and buy a yacht that best suits your needs **STRIDER — BRISTOL YACHTS** from our catalogue. Presently, at Shestakov Yacht Sales Inc., we have a wide variety of yachts available on our sale's list. We also work in close contact with all the big yacht manufacturers from all over the world.

If you would like to buy a yacht **STRIDER — BRISTOL YACHTS** or would like help answering any questions concerning purchasing, selling or chartering a yacht, please call **+1(954)274-4435**

TABLE OF CONTENTS

TABLE OF CONTENTS	2
SPECIFICATIONS	4
Overview	4
Basic Information	4
Dimensions	4
Speed, Capacities and Weight	5
Accommodations	5
Hull and Deck Information	5
Engine Information	5
DETAILED INFORMATION	6
REMARKS	6
ACCOMMODATIONS and LAYOUT	6
ELECTRONICS and NAVIGATION EQUIPMENT	7
ELECTRICAL SYSTEM	8
ENGINE/MECHANICAL EQUIPMENT	8
SAILS and RIGGING	9
HULL and DECK	9
SAFETY EQUIPMENT	11
EXCLUSIONS	11
Exclusions	11
Disclaimer	11
PHOTOS	12
Main Salon	12
Port Settee	12
Salon to Aft	12
Starboard Settee	12
Forward Stateroom	13
Forward Head	13

Aft Head	13
Foredeck	13
Deck Looking Aft	14
Spars, Halyards, Rigging, Furler	14
Companionway	14
Cockpit to Forward	14
Starboard Qtr.	14
Port Bow	14
Port Qtr.	15
CONTACTS	16
Contact details	16
Telephones	16
Office hours	16
Address	16

SPECIFICATIONS

Overview

STRIDER is a classic example of a Ted Hood designed sloop built to the strict specifications of the Bristol Boat Company. Modifications to the deck layout, interior design and systems-arrangements were provided by Dieter Empacher and, with her 2012/13 comprehensive refit, she is ready to go places. The boat can be single-handed or easily managed by two, and she accommodates eight with ease.

She exhibits classic, graceful lines with her traditional, sweeping sheer-line. The Bristol 47.7 has powerful hull lines that are coupled with a medium to heavy displacement and a keel/centerboard design, all translating into excellent boat speed. With the centerboard up, STRIDER only draws 4'-11", allowing her access to shoal areas that vessels of her size can only dream about, while at the same time affording excellent stability and sea-keeping ability with the board down for offshore passages.

Basic Information

Category: Center Cockpit

Sub Category: Sloop

Model Year: 1986

Year Built: 1986

Refit Year: 2013

Refit Type: Comprehensive

Country: United States

Vessel Top: 2354

Cockpit: Yes

Dimensions

LOA: 47' 4" (14.43m)

LWL: 37' 3" (11.35m)

LOD: 47' 4" (14.43m)

Beam: 13' 2" (4.01m)

Min Draft: 4' 11" (1.50m)

Max Draft: 11' 0" (3.35m)

Speed, Capacities and Weight

Cruise Speed: 7 Kts. (8 MPH)

Max Speed: 8 Kts. (9 MPH)

Displacement: 34660 Pounds

Water Capacity: 120 Gallons

Holding Tank: 30 Gallons

Fuel Capacity: 144 Gallons

Accommodations

Total Cabins: 2

Total Berths: 2

Sleeps: 8

Total Heads: 2

Hull and Deck Information

Hull Material: Fiberglass

Deck Material: Fiberglass

Hull Configuration: Centerboard

Hull Color: Flag Blue

Hull Designer: Ted Hood

Engine Information

Engines: 1

Manufacturer: Perkins

Model: 4-236

Engine Type: Inboard

Fuel Type: Diesel

DETAILED INFORMATION

REMARKS

STRIDER is a classic example of a Ted Hood designed sloop built to the strict specifications of the Bristol Boat Company. Modifications to the deck layout, interior design and systems-arrangements were provided by Dieter Empacher and, with her 2012/13 comprehensive refit, she is ready to go places. The boat can be single-handed or easily managed by two, and she accommodates eight with ease.

She exhibits classic, graceful lines with her traditional, sweeping sheer-line. The Bristol 47.7 has powerful hull lines that are coupled with a medium to heavy displacement and a keel/centerboard design, all translating into excellent boat speed. With the centerboard up, STRIDER only draws 4'-11", allowing her access to shoal areas that vessels of her size can only dream about, while at the same time affording excellent stability and sea-keeping ability with the board down for offshore passages.

ACCOMMODATIONS and LAYOUT

STRIDER sleeps four in two staterooms, plus two-four in the main salon. The interior joinery is satin-finish varnished African mahogany with louvered doors and locker fronts throughout, and a varnished solid teak and holly cabin sole. Numerous hatches, opening ports provide nice light and ventilation throughout. All overhead hatches have hinged screens with teak frames.

FORWARD STATEROOM

The forward stateroom has a large V-berth with a seat in the middle and a filler cushion that can be used to create a double berth. There are two hanging lockers and extensive storage space throughout, including twin bureaus and multiple lockers above the berths on each side. A large Bomar opening hatch and two opening portholes provide great light and ventilation. Forward of the stateroom is access to a divided chain locker.

FORWARD HEAD

The enclosed head with shower is aft and to port, with access from the forward stateroom or from the main salon. There is a new Tecma electric toilet, vanity with porcelain sink, shower, mirror and generous storage. A ventilator and opening porthole provide light and ventilation.

MAIN SALON

The main salon has a full-length settee to starboard that extends to a double berth, with several storage lockers outboard. An L-shaped settee to port also extends to a double berth when needed for extra guests. There is a drop-leaf table just off center with useful utensil/bottle storage in the middle, easily accommodating six guests when fully opened. There are louvered-door

storage compartments above and outboard, as well as enclosed storage behind the settee seat back. Numerous grab rails and hand holds throughout.

GALLEY

The U-shaped galley is aft to starboard with convenient access to the companionway. There is extensive countertop area and abundant storage throughout.

Other features:

- Double sink
- Shipmate LPG 3-burner cook-top stove with oven
- GE Omni 5 microwave oven
- Pressure fresh water
- Top and front loading Frig-o-boat refrigerator/freezer (new 2012/13 refit, starboard & port top loader)
- Twin deep stainless steel sinks with new pressure hot and cold water
- Manual fresh and salt water pumps
- Dishes, glasses, utensils etc.

NAV STATION

The aft-facing navigation station is in the passageway to port, featuring a large chart table with storage under, multiple drawers, lockers and new flush-mounted Raymarine electronics. Electrical panels and large access doors to the engine are inboard, opposite the nav station, with additional access panels on all sides for exceptional accessibility. Custom battery storage and shelving in engine room.

MASTER STATEROOM

The aft stateroom has a desirable centerline queen berth with easy access from both sides. There is an abundance of storage compartments and several drawers on both sides, and a large hanging locker forward to port. Natural light and ventilation are provided via opening ports, three Bomar deck hatches and cowl vents.

ELECTRONICS and NAVIGATION EQUIPMENT

- Ritchie 5" compass on new Edson steering pedestal (new 2013)
- Raymarine autohelm display in cockpit
- Raymarine i70 apparent wind angle and speed (new 2012) with display at companionway hatch and monitor at nav station
- Raymarine FFD display at companionway hatch
- AWI for the wind-electronics system (new 2012) at masthead
- Raymarine i70 depth sounder display at companionway hatch and at nav station
- Raymarine i70 knot meter & log display in cockpit

- Raymarine 4 kW Series transponder mounted at mast
- Raymarine Hybrid Touch 9.5" GPS display at helm station
- Raymarine Hybrid Touch 12.5" GPS display at nav station
- Icom IC-M604 VHF/radio at nav station (new 2013)
- Command Mic III for VHF/RT service at helm station
- SSB HB (new 2013) Icom, HF Marine IC-M802 transceiver at nav station
- SCS Pactor modem at nav station and interfaced with the ICOM SSB transceiver
- Wirie wireless booster antenna on stern arch (new 2013)
- Active and passive AIS devices
- Fusion MS-RA2000 Series player/stereo/VHF, weather stereo system in main salon, with speakers in main salon and in aft stateroom
- Sirius satellite antenna for entertainment system

ELECTRICAL SYSTEM

- 12 VDC, 110 VAC systems with breaker panel opposite nav station
- (6) Odyssey AGM-type batteries: (1) engine; (2) service; (1) radio-bank; (2) bow thruster (all rewired 2013)
- Twin 12 VDC engine alternators
- Statpower DC-AC inverter
- Newmar battery charger
- (2) 30 amp and (1) 50 amp Hubbell shore power inlets, with (2) 30 amp shore power cords
- Reading lights and 12 volt fans throughout interior
- Multiple 12 volt outlets throughout interior
- All LED lighting (new 2012)
- (2) Hella red and green deck lights
- Stern navigation light
- Deck and steaming lights on spreader (new 2012)
- Aqua Signal tri-color, strobe and anchor-light fixture mounted on masthead
- VHF/RT antenna (at masthead)

ENGINE/MECHANICAL EQUIPMENT

- 1986 Perkins, Model No: 4-236, 85hp diesel engine (approx. 2,500 hours)
- All new (2014) cockpit instrument display
- Hurth 2:1 transmission
- Electric oil change pump
- Racor fuel/water separator
- 3-blade 21" bronze prop with Spurs line cutter and stainless steel shaft
- Seaward 11-gallon hot water heater (new 2013)
- Spectra 12 VDC watermaker (new 2013)
- Force 10 propane bulkhead heater mounted in forward main salon

- High capacity saltwater deck wash forward
- Hot/cold shower and freshwater deck wash aft
- (2) Par-Jabsco electric bilge pumps (new 2014)
- (2) Manual bilge pumps
- Bilge areas and compartments cleaned/serviced during 2012/13 refit
- Fuel tanks replaced (2012/13 refit)
- Holding tanks replaced (2012/13 refit)
- (2) Thetford Tecma electric macerating toilets (new 2012/13 refit) (with holding tank for forward head)
- 12 VDC engine room blower

SAILS and RIGGING

Sails:

- Doyle furling mainsail (cleaned and serviced 2012 by Doyle)
- Doyle 120% furling Dacron genoa (new 2012)
- Storm jib
- Storm trysail

Rigging:

- Hood aluminum mast with Stoway in-mast furling (mast inspected, soda blasted and Awlgrippped 2012)
- Wire standing rigging (replaced 2013)
- Harken MKII furling headstay
- Hall Spars QuikVang
- Spars, standing and running rigging inspected, serviced (2012)
- Spinnaker pole (new 2012)

Winches:

- (2) Andersen 58 STE electric 2-speed primary winches (new 2012)
- (2) Lewmar 55 ST secondary winches
- (2) Lewmar 52 ST mainsheet/outhaul winches
- (1) Merriman friction-clutch centerboard winch
- (2) Lewmar 52 ST 2-speed mast-mounted winches for main and spinnaker halyards (serviced 2012)
- (1) Lewmar 52 ST winch for jib halyard

HULL and DECK

The hull is constructed of hand-laid solid fiberglass, and the deck is hand-laid fiberglass with end

grain balsa core. Hull is Flag Blue Boero Challenger Hi-Tech paint with red double boot stripes, gold cove stripe and red bottom (bottom blasted to bare and repainted, October 2012). Deck is white with white non-skid. She has also has a teak rubrail with stainless striker. Centerboard configuration provides a minimum draft of only 4'-11" with board up and a maximum draft of 11' with her foil shaped board down which makes for the enhanced upwind performance that this breed of Ted Hood designed boat are well known.

Additional features:

- Sliepner Side-Power electric bow thruster (new 2013)
- 12 VDC anchor windlass (rebuilt 2013) with (2) foot switches
- Stainless stemhead fitting with twin anchor rollers and integrated line chocks
- CQR 60 lb. anchor with 200' chain rode
- CQR 45 lb. anchor with 10' chain and 200' nylon rode
- Stern arch fitted with 200' braided webbing on mounted spool (new 2013)
- Stainless chain plate
- (2) Large opening anchor-locker hatches
- Bow and stern pulpits
- Custom S/S side stanchions support double lifelines (lifelines new 2013)
- (6) Merriman aluminum deck cleats
- Stainless line chocks
- All deck fittings replaced with new (2012) stainless steel
- Outboard genoa tracks
- S/S genoa turning blocks
- Stainless steel spray dodger frame
- Dodger (tired)
- Stainless steel stern arch (new 2012)
- (2) Southwest Windpower 300 watt wind generators
- Heavy-duty davit (new 2012)
- Drip rail, grab rails, cockpit trim, companionway hatch boards
- High, flared teak toe rail
- (4) Teak dorade boxes with chrome cowl vents and S/S guards
- (13) Bomar aluminum opening port lights
- (4) Fixed port lights
- (4) Deck hatches
- Edson steering pedestal (new 2013) with 36" stainless wheel with cover grip
- Emergency tiller
- Engine controls (throttle & linkage) replaced with new (2013)
- Compass binnacle (new 2012)
- Cockpit engine gauge and control panel (new 2014)
- Companionway electronics displays
- Cockpit manual bilge pump
- Fenders/docklines
- (2) Aluminum propane tanks in starboard lazarette

- Radar reflector
- Sea anchor
- Stainless steel ladder mounted on stern rail
- Horn
- Cockpit cushions
- Boat hooks
- Spares

SAFETY EQUIPMENT

- Avon 6-person life raft, deck mounted (serviced 2013)
- ACR, Global Fix, iPro, 406MHz, GPS EPIRB (new 2013)
- (4) Life jackets
- (2) Life rings (new 2013)
- (2) Jack-line systems
- Flares
- High water alarm (new 2013)
- (2) Engine room fire suppressors
- (2) Fire extinguishers
- (2) CO2 detectors

EXCLUSIONS

- The owner's personal effects are excluded from the sale.
- AB Inflatable Ventus 9VL tender, with 5 hp Mercury outboard engine

Exclusions

Owner's personal belongings.

Disclaimer

The Company offers the details of this vessel or yacht in good faith but cannot guarantee or warrant the accuracy of this information nor warrant the condition of the vessel. A buyer should instruct his representatives, agents, or his surveyors, to investigate such details as the buyer desires validated. This vessel or yacht is offered subject to prior sale, price change, or withdrawal without notice.

PHOTOS

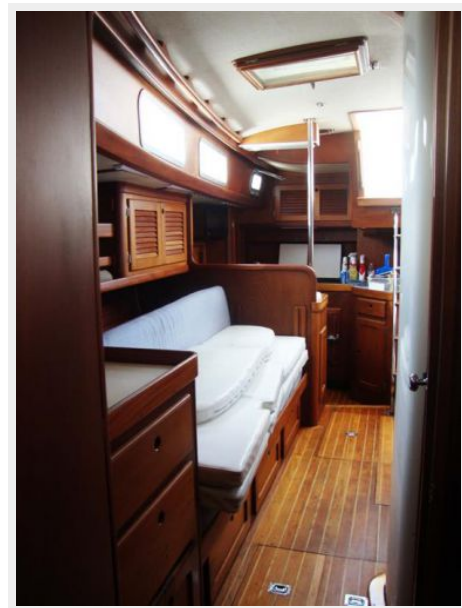
Main Salon



Port Settee



Salon to Aft



Starboard Settee



Forward Stateroom



Forward Head



Aft Head



Foredeck



Deck Looking Aft



Spars, Halyards, Rigging, Furler



Companionway



Cockpit to Forward



Port Bow



Starboard Qtr.



Port Qtr.



CONTACTS

Andrey Shestakov, leading yacht broker of the sales department of Shestakov Yacht Sales Inc. Shestakov Yacht Sales Inc., the official representative of the Miami/Fort Lauderdale FL headquarters.

Contact details

Email: andrey@shestakovyachtsales.com

Web: shestakovyachtsales.com/en/

Telephones

USA: +1(954)274-4435

Office hours

Monday – Saturday: **9:00 - 21:00** EDT

Sunday: **closed**

Address



Harbour Towne Marina, 850 NE 3rd St,
STE 213, Dania, FL 33004