

BALLYTRIM — NAUTOR'S SWAN



Судостроитель: NAUTOR'S SWAN

Год постройки: 2005

Модель: Крейсерская яхта

Цена: ЦЕНА ЯХТЫ ПО ЗАПРОСУ

Местонахождение: United Kingdom

Длина общая: 46' 1" (14.05m)

Ширина: 14' 0" (4.27m)

Мин. осадка: 7' 6" (2.29m)

Купить **BALLYTRIM — NAUTOR'S SWAN** а также выбрать подходящую вам яхту из нашего каталога яхт вам поможет опытный яхтенный брокер Андрей Шестаков. На сегодняшний день компания **Shestakov Yacht Sales Inc.** имеет большое количество яхт в собственном списке продаж, а также тесно сотрудничает со всеми крупными яхтенными производителями по всему миру.

Для того чтобы купить яхту **BALLYTRIM — NAUTOR'S SWAN** а также проконсультироваться по любому вопросу связанному с покупкой, продажей, чартером яхт позвоните по телефону **+7(918)465-66-44**.

ОГЛАВЛЕНИЕ

ОГЛАВЛЕНИЕ	2
ХАРАКТЕРИСТИКИ	4
Обзор	4
Основная информация	4
Размеры	4
Скорость, вместимость и масса	4
Размещение	4
Корпус и палуба	5
Информация о двигателе	5
ПОДРОБНОЕ ОПИСАНИЕ	6
Broker's Comments	6
Owner's Comments	7
Construction	7
Machinery	8
Electrical Systems	9
Plumbing Systems	10
Tankage	11
Navigation Equipment	11
Domestic Equipment	12
Accommodation	14
Deck Equipment	16
Исключения	21
Отказ от ответственности	21
ФОТОГРАФИИ	22
КОНТАКТЫ	25
Контактная информация	25
Телефоны	25
Время работы	25

Адрес

25

ХАРАКТЕРИСТИКИ

Обзор

She may not be enormous but she is perfectly formed and managed the cruiser racer role with great style. Immaculately maintained

Основная информация

Тип судна: Крейсерская яхта

Модельный год: 2005

Год постройки: 2005

Страна: United Kingdom

Размеры

Длина общая: 46' 1" (14.05m)

Длина по ватерлинии: 40' 3" (12.27m)

Ширина: 14' 0" (4.27m)

Мин. осадка: 7' 6" (2.29m)

Скорость, вместимость и масса

Водоизмещение: 39021.820374 Pounds

Вместимость воды: 132.086026 Gallons

Вместимость сточного бака:
28.530581616 Gallons

Объем топливного бака: 90.875185888
Gallons

Размещение

Всего кают: 3

Всего коек: 8

Всего ком. состава: 2

Корпус и палуба

Материал корпуса: GRP

Материал палубы: Teak

Отделка корпуса: Stainless Steel

Дизайнер корпуса: German Frers

Информация о двигателе

Производитель: Volvo Penta

Тип двигателя: Inboard

Тип топлива: Diesel

ПОДРОБНОЕ ОПИСАНИЕ

Broker's Comments

The Swan 46' is a yacht which is a genuine cruiser racer and she is rare in that she excels in both roles. BALLYTRIM has been carefully maintained from new (She was built for the current owners, their third Swan) and is only for sale as the owners have bought a Swan 53, the 46's bigger sister.

The owners are keen to achieve a quick sale.

History:

BALLYTRIM has been used primarily for family cruising.

She was delivered to the UK, sailed to the Mediterranean and has cruised extensively there. Countries and places visited include: Spain, Portugal, France, the Balearics, Italy, Corsica, Sardinia, Sicily, Malta, Montenegro, Croatia, Greece, the Ionian and Cyclades. She has recently spent the winter in the Caribbean and has sailed back via Bermuda, the Azores and Portugal.

She is very fully equipped for cruising with a very comfortable owners' cabin and en-suite heads forward, and two double berths and a second heads aft. She sleeps eight in total including a berth in the saloon. Equipment includes: bow seat, bow thruster, safe, air conditioning and heating, awning, bimini, cockpit cushions, removable cockpit table, Fleet Broadband and Global Surfer both connected via in-boat Wifi, large bow locker, dinghy (with storage on coach roof), outboard, water electricity generator etc. etc. Large fuel and water tank capacity provide significant range. She has a standard fin keel and full teak decking including on the coach roof.

Maintenance has largely been carried out by Nautor in Villefranche and also by a highly experienced part time skipper. She has plastic floor covering, protective cushion covers, and saloon table cover and has never been sailed without. She comes with a considerable quantity of engine, electrical and other spares and equipment.

BALLYTRIM has also taken part in various regattas including the Swan Cup in Sardinia, the

Voile de St Tropez and recently the Voile de St Barth's. She has separate racing sails and equipment and bespoke canvas protective covering for the interior woodwork while racing.

The sail wardrobe is extensive with good quality cruising sails, full racing sails and both asymmetric and symmetric spinnakers. She has a storm jib and trysail with a separate trysail track on the mast. All sails are by North.

Owner's Comments

BALLYTRIM is a fabulous yacht. After a Caribbean season she has sailed back across the Atlantic, provided a family holiday in Menorca, sailed to Villefranche to transfer personal effects to the new boat and then has been sailed by a couple pretty much non-stop to the UK. She looks great, receives admiring comments wherever she goes and sails beautifully. Ideal for family cruising, club or offshore racing and maybe the next ARC or something further afield.

Construction

RCD Status: The yacht conforms with the essential safety requirements of Directive 94/25EC (Recreational Craft Directive) and is categorised A – "Ocean" (or Cat B – whichever is appropriate)

Hull, Deck & Superstructure Construction:

- The hull is of single skin construction using fibreglass reinforced isopolyester laminate with vinylester skincoat.
- Multiaxial or unidirectional fibres in selected areas.
- Structural bulkheads are of marine plywood laminated to hull and deck with foam strips between.
- Stiffener flanges are unidirectional lay-ups over hollow cores.
- Engine beds are of GRP.
- Epoxy barrier coat layers sprayed on bottom, and finished with antifouling.
- Part of the transom folds out manually to form a platform with ladder up to deck, and providing access to the transom stowage area.
- White hull in gelcoat NGA 9650 with blue stripes 7007

- Bronze sea cocks for all through-hull connections below waterline, finished flush and located in accessible positions.
- Deck is of sandwich construction, using multiaxial glass fibre reinforced, isopolyester laminate with low-density closed cell foam core, and is bonded to the hull.
- High-density core under deck fittings.
- Unteaked deck surfaces finished in white gelcoat.
- Stainless steel chainplates,
- In addition the antifouling was removed and bottom repainted, the elk hide steering wheel covers were replaced and a full service was carried out in 2013. The sail drive seal was replaced in 2011 along with a very full service programme. Work was completed at the Swan Service Centre in Villefranche.

Keel & Rudder:

- The keel is lead casting with antimony and carefully finished to accurate shape. Cast-in keel bolts are of high-tensile stainless steel.
- Rudder of foam filled GRP with tapered hi-tensile stainless steel stock, supported by two self-aligning bearings.

Machinery

Engine & Gearboxes:

- 1 x Volvo Penta 53hp at 3000 rpm with Saildrive.
- Wet exhaust system with fibreglass silencer, discharge at transom.
- Engine space internally sound insulated, fire resistant meeting SOLAS B-15 requirements.
- Wet exhaust system with fibreglass silencer, discharge at transom.
- Thermostat-controlled fresh water cooling with heat exchanger on engine.
- A separate heat exchanger for the consumable fresh water is included in the same circuit thus making hot water available whenever the engine is running.
- Seawater intake with strainer. Discharge through exhaust system.
- Fuel filter/water separator with water alarm and shut off valve on feed line to engine.

Maintenance & Performance:

- BALLYTRIM's machinery is serviced in accordance with the manufacturer's recommendations.

Propulsion & Steering:

- Two 1.05m stainless wheels with Elkhide cover (replaced 2012), 1.8 turns H.O to H.O
- Composite pedestals with roller bearings, brake and crash bar.
- Emergency tiller stowed in lazarette.
- Helmsman's seat and pushpit can be opened for convenient access to platform.
- Saildrive with Flex-O-Fold 3-blade folding propeller.
- Maxpower VIP 150 bow thruster

Electrical Systems

Voltage Systems:

- 1 x 240 volt outlet in aft cabin
- Voltage stabiliser for instruments.

Battery Banks:

- 24v 528Ah (20 hour) gel cel service battery.
- Larger battery capacity 440 Ah at 5 hours gel cell in lieu of 242 Ah standard.
- The engine has its own AGM starting battery 50 Ah 12V.
- Batteries located in ventilated GRP boxes.
- The service batteries are charged by a heavy duty alternator with three step regulation on the main engine, with a 115 A alternator for the starting batteries.

Alternators:

- 110A service alternator.

- 60A starting alternator.

Generator:

- Watt&Sea hydrogenerator (2013).

Shore Power:

- Shore power inlet with six outlets and battery charger Mass 24/50a Inverter.

Other Electrical:

- For lighting protection the headstay, backstay, main shroud chain plates and mast step are grounded to ballast keel bolts with heavy cable.
- Mass Sine 24/2,500 VA including transfer switch.

Plumbing Systems

Fresh Water & Water Heating System:

- Hot and cold water pressure water.
- Hot water tank capacity 40 ltr (10.5 US gallons).
- The consumable water can be heated either with engine cooling water, or optionally with a heating element working on AC.
- Galley sinks and washbasins drained through sea cock.
- Washbasin and shower trays drained with electrical pumps to sea cocks.
- Outlets above waterline.
- Sea water spout in galley with foot pump

Bilge Pumps:

- Two manual Whale Titan 100 ltr/min (26 US gallons) bilge pumps.

One electric bilge pump.

Tankage

Fuel:

- Fuel capacity 344 ltr (90.8 US gallons) in three stainless steel tanks with gauges.
- One filler line with strainer and tank selector manifold for all tanks.
- Tanks vented to deck edge.

Fresh water:

- Water capacity 500 ltr (132.0 US gallons) in tanks with gauges.
- Water tanks of stainless steel provided with baffles, inspection cover, sounding plug and vent pipe.

Grey/Blackwater holding tanks:

- Total capacity of 108 litres.

Gas:

- 2 x Gas tanks, including securing arrangements and pressure regulator.

Navigation Equipment

- Removable transom mounted antennae post in white painted carbon with arms for emergency VHF and fax aerials, radar and fleet broadband.
- Two SUUNTO 5" magnetic compasses, balanced for both northern and southern hemisphere, on steering pedestals.
- One Quartz clock on bulkhead.
- B and G Hydra cruise pack.
- FFD at nav station.
- Speed and depth sensors.

- 2 x non NMEA FFD displays on either side of companionway.
- 360 wind on stb side companionway.
- 45 magnified on port side.
- 3 x B and G 20/20 displays on mast.
- FFD display on port pedestal.
- Furuno NavNet VX2 1834C C-MAP colour radar and plotter.
- LCD flat screen at nav station.
- 7" display mounted on stb pedestal showing radar and plotter.
- Furuno FAX-30 weather fax.navtex receiver.
- Raymarine RAY240E DSC VHF with second waterproof handset.
- Sailor SC4000 Iridium marine phone (not connected at present) replaced by Fleet Broadband 250.
- B and G Hydra 2000 pilot with fluxgate compass and hydraulic ram.
- Sony Radio.CD/DVD/MP3 player with B&W speakers in saloon.
- Outlet for Ipod.
- LCD screen to be used for DVD and for Furuno radar plotter.
- Poly Planar loudspeakers in cockpit.
- Emergency VHF aerial.
- USB converter for connecting a laptop to instruments and phone at chart table.
- Stowage locker for buyers supplied laptop.
- iPod connector.
- KVH Sat phone Fleet Broadband 250 (2013).
- NAIS400 AIS System (2013).
- Wifi system for FB250, Globesurfer and NMEA multiplex (2013).

Domestic Equipment

Galley:

- Stainless steel three-burner gas stove with oven and grill, gimballed and provided with fiddles.
- Battery driven refrigeration unit with thermostat control for refrigerator.
- 60 ltr top loading fridge with thermostat to allow freezer use

Heads/Showers:

- Hot and cold deck shower.
- Forward head has Y valve for overboard or holding tank discharge.
- TECMA "Easyfit" electric toilet (2013) with salt water flushing in forward, original manual unit in aft heads.

Heating & Ventilation:

- Natural ventilation in cabins with Dorade inlets.
- Openable deck hatches and portholes.
- Electric fans in forward and aft cabins.
- Exhaust blowers in galley and heads.
- Webasto Blue Cool premium 30,000 BTU air conditioning with 13,000 in saloon, 6,000 in fore cabins and 4,000 in aft cabins with temperature controls in all cabins.
- Heating system.

Lighting:

- 12 volt watertight outlet at mast for anchor light.
- Tricolour light at mast head, steaming light, deck light, spreader light, windex light, bow and stern navigation lights, separate anchor light.
- Blue led lights at floor level.
- Boom light with dimmer and separate switch.

- Dimmer for saloon lights.
- Berth reading lights Cantalupi (upgrade from standard).
- Cantalupi Tony lights in saloon and forward cabin (upgrade from standard).
- Separate anchor lights.
- Anchor light with cable and plug.

Accommodation

Summary of Accommodation:

- Lewmar Medium Profile recessed deck hatches.
- Four fixed coaming windows.
- Openable coaming portlights – in port and starboard aft cabin, aft head and galley.
- Three portlights from port and starboard aft cabin to cockpit.
- Main companionway lockable sliding hatch of tinted acrylic with sliding drop board.
- Mosquito screens for deck hatches and washboard.
- Teak with hand rubbed satin finish is used for the visible woodwork.
- Teak and holly cabin sole boards.
- Teak slats on hull side in saloon, aft cabins and owners cabin.
- Plastic protection covers.
- Overhead lined with removable panelling.
- Cabinets, tables, bureaus, seats, dressers etc have rounded corners.
- Doors, partitions and panelling are teak-faced plywood or foam.
- Self-engaging latches with bumpers to hold doors in open position. Hanging lockers are equipped with rods and hooks, and their doors are provided with louvers.
- Drawers are secured with latches.
- Handrails at entrance, in heads and in cabin overhead.
- Companionway ladder with non-slip steps.

- All fixed berths have foam mattresses, the fixed berths in the owner's cabin have foam mattresses over Scandi-Flex battens with mattress toppers for added comfort.
- For double berths 12.5cm (5"), for single berths 7.5cm (3") mattresses.
- All berths equipped with canvas lee cloths.
- Crew covers for saloon and nav. seats
- Fitted sheets for all mattresses
- Stowage for owner's crockery.
- Marine safe with electronic code at aft end of single berth in forward cabin.

Description of layout:

- Owner's cabin forward, double berth with stowage underneath. Hanging lockers and drawers and single third berth on the starboard side.
- Saloon with L-shaped settee and table port side, settees and navigation desk with drawers, lockers outboard. Two removable chairs.
- Galley to starboard side with 3-burner stove, front loaded refrigerator and top loaded freezer/fridge. Counter tops in Corian.
- Aft cabin on port side, double berth with stowage under. Large hanging locker. Curtains for windows and ports.
- Aft cabin on starboard side with double berth with storage under. Large hanging locker with curtains for windows and ports.
- Forward cabin has single berth on stb side in lieu of vanity unit. Both forward berths have headboards.
- Double berth in additional stb aft cabin
- Locker with bottle stowage in saloon
- Additional Stainless steel handrail in saloon
- Canvas cover for saloon table
- Sliding doors in galley black, (not silver as standard)
- Stainless plate rack in galley locker.

Deck Equipment

Rig:

- The mast is stepped through the deck onto a composite mast step.
- Headstay recessed for under-deck furler.
- Harken lead blocks for halyards, lifts, reefing and main sheet at mast partners.
- The lines are led aft below deck to clutches in front of the halyard winches.
- Main sheet led further aft both sides.
- Harken aluminium jib sheet tracks and cars.
- Gennaker sheet blocks each side on aft deck.
- Gennaker tack line block on stem, line led aft below deck.
- Attachment in cockpit for mainsheet block, tack point for staysail on foredeck.
- 2 x Additional pad eyes in cockpit.
- Spars built of extruded aluminium alloy sections painted white.
- Double spreader 15/16 fractioned rig with discontinuous shrouds, and 20 degree swept spreaders.
- Mast of oval section, with external stemball.
- Tapered and welded masthead with two jib and one main halyard sheave.
- Two spinnaker halyards.
- Internal wiring secured to mast.
- Neoprene mast boot with Dacron cover over deck partners.
- Standing rigging of round Navtec rod.
- C550 rigging screws with stainless covers for main shrouds.
- Headstay with toggles at upper and lower end.
- Boom of oval section with internal outhaul led to deck, and arranged for two single line reefs led to cockpit. Double ended main sheet led forward along boom.
- Hydraulic boom vang with high-pressure return. Hydraulic tensioners for backstay legs.

- Single gauge System 50 central control panel in aft cockpit.
- Running rigging colour coded Spectra and polyester.
- Main halyard with screw shackle, jib halyards, two spinnaker halyards with snap shackles.
- Recessed Harken jib furler with furling line led below deck to cockpit utility winch.
- 3 x Folding mast steps.
- Block and cleat for burgee halyard.
- Antal 40 trysail track.
- Antal 50 mainsail track with bolt rope.
- Carbon fibre spinnaker pole.
- Carbon fibre jockey pole.
- Track and tackle on main mast.
- Spinnaker sheets, guys and downhaul
- Deck chocks for spinnaker and jockey poles.

Winches:

- 2 x Lewmar 54 CEST (chrome electric, self tailing) electric primary winches in lieu of 54 CST
- 2 x Lewmar 50 CST electric winches.
- Main halyard winch Lewmar 48 CEST in lieu of standard with teak frame in saloon overhead.
- Four winch handles

Sails (All Sails are by North):

- Cruising main, 3DL 680 19,600 Dpi, 2010, Sound.
- Furling headsail, 3DL 680 Marathon, 2013, Very Good.
- Furling headsail, 3DL 680 Marathon, 2010, Good.

- Storm jib, 2005, Little used.
- Trysail, 2005, Little used.
- Racing main, 3Di 760 Aramid/Dyneema, 2013, Very good.
- Racing no1, 3DL 600, Twaron, 2012, Very good.
- Racing no2, 3DL 600, Twaron, 2012, Very good.
- Racing no3, 3Di 760 Aramid/Dyneema, 2013, Good.
- Racing no4, 2009, Tired.
- Asymmetric code 5, 2005, Sound.
- Symmetric spinnaker code 2, 2005, Sound/repared.
- Symmetric spinnaker code 4, 2010, Very good.
- 2 spinnaker stuffers and lines.

General:

- Separate bathing ladder.
- 35mm high teak toe rails.
- Pulpit, pushpit and lifeline stanchions 600mm high of stainless steel. Spacing conforming to ORC requirements.
- Lifeline gate port and starboard side amidships, and in pushpit.
- 9mm teak on coachroof
- 9mm teak under halyard winches
- Bow sprit.
- Deck fittings for bathing ladder in gate port and starboard side.
- Brackets on pedestals – radar and plotter on stb side with autopilot and FFD on port side.
- Stainless steel bar in forepeak locker for sheet stowage.
- Mug holders on each steering pedestal.
- In cockpit hinged GRP hatches to lazarette, and to stowage locker with space for life raft.

Under helmsmen seat gas bottle locker port side, stowage starboard side.

- GRP stowage locker in cockpit coaming.
- Cockpit table.
- Owner's Manual in English is provided with directions for use and maintenance, drawings and diagrams for main systems and handbooks for machinery and components.
- Bosun's chair.
- Flag pole.
- Engine tool kit.

Anchoring & Mooring Equipment:

- Mooring cleats and fairleads at bow, stern and midships with teak cleat guards.
- Electric windlass can also be operated manually with standard winch handle.
- Second anchor roller.
- On fore deck hinged anchor well hatch.
- 100m of 10mm anchor chain with 3m line.
- 10m 10mm anchor chain spliced to 50m anchor line.
- Two 20 kg DELTA anchors.
- Mooring lines and warps.
- Four air fenders.
- Boat hook stowed in anchor locker.

Covers, Canvas & Cushions:

- Covers for steering wheels and instrument pedestals – Pacific blue Sunbrella.
- Cockpit cushions – Pacific Blue.
- 40cmx40cm folding cushions.
- Sprayhood with removable side extensions Pacific Blue with cover to match.

- Bimini top for aft part of cockpit Pacific Blue.
- 2 x canvas bags for lines.
- Cockpit table cover.
- Awning.
- Removable teak seat in pulpit.

Tender & Outboard:

- Outboard bracket on pushpit.
- Teak mounts for stowing Avon type rib either inflated or deflated with cover and or zip bag.
- Avon rib with 6hp outboard engine with covers and bag.

Safety Equipment:

- Two jackstays of webbing for side decks, one double for cockpit.
- Safety belts for navigator and cook.
- 2 x six person Ocean Safety liferafts,
- Lifebuoys, Jonbouy and danbuoy with light drogue and heaving line

Fire-fighting equipment:

- Fixed fire extinguisher in engine space with release handle at companionway.
- Portable extinguishers in interior, one in galley, one forward.
- Fire blanket in galley.

Spare Parts:

- Plumbing spare parts
- Engine spare parts including zinc anode.
- Electric spare parts.

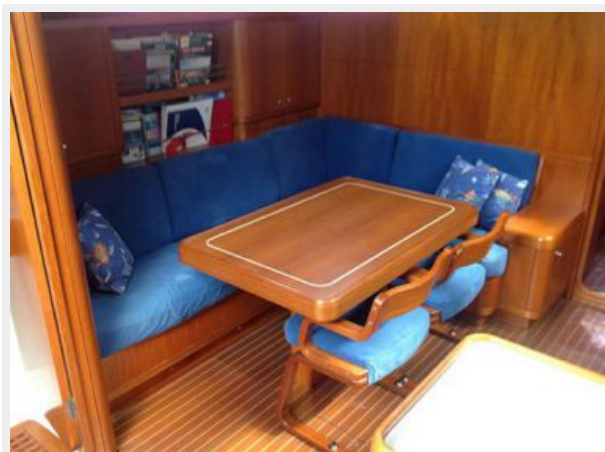
Исключения

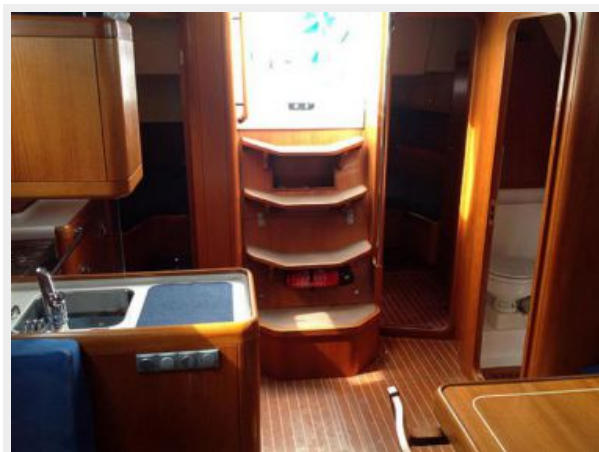
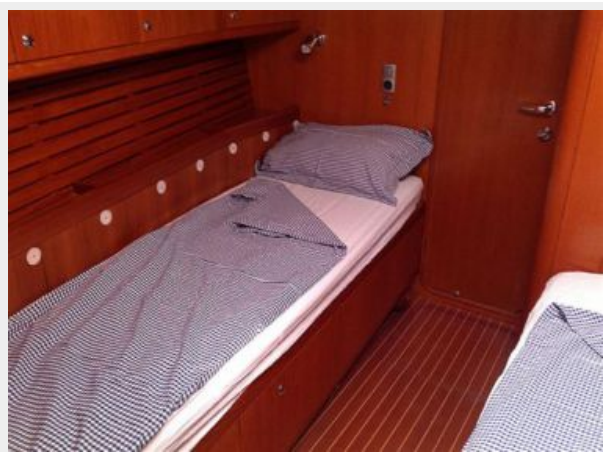
При продаже яхты исключаются личные вещи владельца.

Отказ от ответственности

Компания предоставляет описание судна или яхты добросовестно, но не может гарантировать точность этой информации, а также не ручается за техническое состояние. Покупатель должен проинструктировать своих агентов или оценщиков исследовать представленную информацию более подробно, по собственному желанию. Продажа судна или яхты, изменение цены или снятие с продажи будет происходить без предварительного уведомления.

ФОТОГРАФИИ







КОНТАКТЫ

Андрей Шестаков (Andrey Shestakov) – ведущий яхтенный брокер отдела продаж яхт и судов компании Shestakov Yacht Sales Inc. Официальный представитель Shestakov Yacht Sales Inc. для русскоговорящих клиентов в центральном офисе компании в Майами/Форт Лодердейл/Флорида/США.

Контактная информация

Email: andrey@shestakovyachtsales.com

Web: shestakovyachtsales.com

Телефоны

Краснодарский край: **+7(918)465-66-44**

США, Майами, Флорида: **+1(954)274-4435**

Время работы

Понедельник – Суббота: **9:00 - 21:00**
EDT

Воскресенье: **Закрито**

Адрес



Harbour Towne Marina, 850 NE 3rd St,
STE 213, Dania, FL 33004