

KERI B — SEA RAY



Builder: SEA RAY

Year Built: 2010

Model: Cruiser

Price: PRICE ON APPLICATION

Location: United States

LOA: 31' 0" (9.45m)

Beam: 11' 2" (3.40m)

Min Draft: 2' 6" (0.76m)

Max Draft: 3' 1" (0.94m)

Cruise Speed: 25 Kts. (29 MPH)

Our experienced yacht broker, Andrey Shestakov, will help you choose and buy a yacht that best suits your needs KERI B — SEA RAY from our catalogue. Presently, at Shestakov Yacht Sales Inc., we have a wide variety of yachts available on our sale's list. We also work in close contact with all the big yacht manufacturers from all over the world.

If you would like to buy a yacht KERI B — SEA RAY or would like help answering any questions concerning purchasing, selling or chartering a yacht, please call +1(954)274-4435

TABLE OF CONTENTS

TABLE OF CONTENTS	2
SPECIFICATIONS	4
Basic Information	4
Dimensions	4
Speed, Capacities and Weight	4
Accommodations	4
Hull and Deck Information	5
Engine Information	5
DETAILED INFORMATION	6
Cockpit	6
Helm Station	6
Bow & Deck	6
Cabin Below	7
Head	7
Electrical Equipment	7
Engine & Mechanical Equipment	7
Remarks	8
Exclusions	8
Disclaimer	8
PHOTOS	9
Transom	9
Arch and Bimini Canvas	9
Arch	9
Steps to Bow	9
Bow	10
Anchor	10
Aft Bench Seat	10
Port Seating	10

Grill	11
Norcold Fridge	11
Helm Seat	11
Helm	11
Joystick	12
Interior Flooring	12
Convertible Dinette	12
Galley	12
Forward Berth	13
Head	13
Flat Screen TV	13
Engine Compartment	13
CONTACTS	14
Contact details	14
Telephones	14
Office hours	14
Address	14

SPECIFICATIONS

Basic Information

Category: Cruiser

Model Year: 2011

Year Built: 2010

Country: United States

Vessel Top: 2351

Dimensions

LOA: 31' 0" (9.45m)

LWL: 31' 6" (9.60m)

Beam: 11' 2" (3.40m)

Min Draft: 2' 6" (0.76m)

Max Draft: 3' 1" (0.94m)

Clearance: 10' 0" (3.05m)

MFG Length: 33' 10" (10.31m)

Speed, Capacities and Weight

Cruise Speed: 25 Kts. (29 MPH)

Displacement: 12800 Pounds

Water Capacity: 28 Gallons

Holding Tank: 28 Gallons

Fuel Capacity: 125 Gallons

Accommodations

Total Cabins: 2

Total Berths: 2

Sleeps: 4

Total Heads: 1

Hull and Deck Information

Hull Material: Fiberglass

Deck Material: Fiberglass

Hull Color: White

Engine Information

Engines: 2

Manufacturer: Mercruiser

Model: 5.0L Axius

Engine Type: I/O

Fuel Type: Gas/Petrol

DETAILED INFORMATION

Cockpit

- Aft and port seating with removable wood table
- Kenyon grill
- Sink
- Norcold refrigerator
- Battery switch panel port cabinet
- Navy blue canvas Bimini top with aft enclosure
- Eisenglass forward of helm
- Transom door
- Shower & locker
- Orion flare/distress kit
- (2) BC size (1) dry chemical fire extinguishers

Helm Station

- Ritchie compass
- Bennett trim tabs
- Teleflex cable steering with tilt helm and power assist
- Joystick Smart Craft
- Axius Skyhook
- Sea Ray analog gauges
- Raymarine VHF RAY240
- Raymarine A70D GPS, Depthometer
- Raymarine C80 radar
- Sony Marine RMX60M stereo with (2) speakers in radar arch
- Electric horn

Bow & Deck

- (2) white sunpads
- Spotlight
- Bow mounted plow anchor w/chain & ample rode
- Quick electric anchor windlass
- Fresh water washdown system
- Dockside water system
- Stainless steel boarding ladder
- (8) life vests

Cabin Below

- Forward berth sleeps two that converts to dining table that seats 4-5 guests
- Large skylight with screen above berth
- Port side seating that converts to a dinette for two guests
- Aft berth sleeps two - electrical outlet, AC vent, (2) reading lights, opening portlight, privacy curtain
- CO detector
- Kenyon single coil burner
- Sharp microwave
- Sink with faucet and pull-out spout
- (1) electrical outlet
- Dometic refrigerator
- Toshiba flat screen TV
- Sony Marine stereo/tuner & (2) speakers

Head

- Vacu-Flush toilet
- Mirror
- Sink
- AC vent
- Portlight
- Cabinets below vanity

Electrical Equipment

- 60 hours on 5.0 kw Kohler generator
- 120 Volt - 30 amp split system shore power w/30 amp battery charger
- 120 Volts AC
- 12 Volts DC

Engine & Mechanical Equipment

- Twin MerCruiser 5.0 L V8 Axius I/O's 350hp ea. 250 hrs.
- Bravo II transmission
- Stainless steel shaft and 3-blade propeller
- Bilge pump - (3) 1,100 GPH Attwood w/auto alarm
- Water heater - Kuuma electric 6 gallon
- 12,000BTU Cruisair air conditioner
- Power engine hatch lift

- Automatic fire system

Remarks

Current owner purchased vessel in September 2013. Wants to move into a 40+ footer. Lightly used and well maintained. New bottom paint June 2014 and exhausts replaced August 2014. Engine warranties until September 2015. She runs better now than when first bought. Easy to show in Ft. Lauderdale.

Exclusions

Owner's personal belongings.

Disclaimer

The Company offers the details of this vessel or yacht in good faith but cannot guarantee or warrant the accuracy of this information nor warrant the condition of the vessel. A buyer should instruct his representatives, agents, or his surveyors, to investigate such details as the buyer desires validated. This vessel or yacht is offered subject to prior sale, price change, or withdrawal without notice.

PHOTOS

Transom



Arch and Bimini Canvas



Arch



Steps to Bow



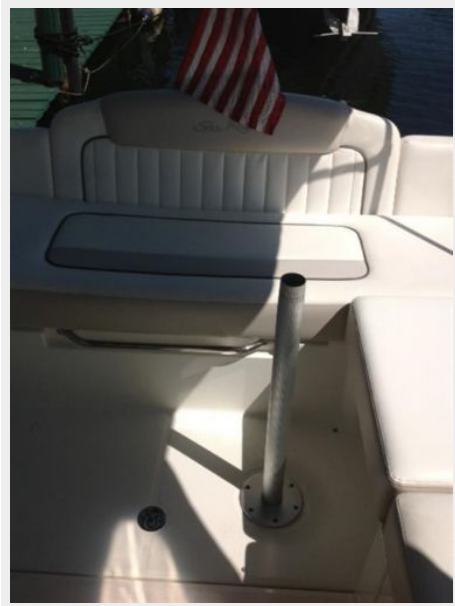
Bow



Anchor



Aft Bench Seat



Port Seating



Grill



Norcold Fridge



Helm Seat



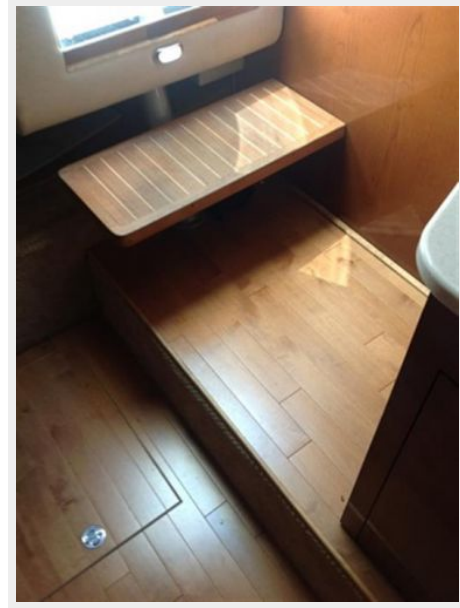
Helm



Joystick



Interior Flooring



Convertible Dinette



Galley



Forward Berth



Head



Flat Screen TV



Engine Compartment



CONTACTS

Andrey Shestakov, leading yacht broker of the sales department of Shestakov Yacht Sales Inc. Shestakov Yacht Sales Inc., the official representative of the Miami/Fort Lauderdale FL headquarters.

Contact details

Email: andrey@shestakovyachtsales.com

Web: shestakovyachtsales.com/en/

Telephones

USA: +1(954)274-4435

Office hours

Monday – Saturday: **9:00 - 21:00** EDT

Sunday: **closed**

Address



Harbour Towne Marina, 850 NE 3rd St,
STE 213, Dania, FL 33004