

## ARLETTE — DALE NELSON



**Судостроитель:** DALE NELSON

**Год постройки:** 2005

**Модель:** Моторная яхта

**Цена:** ЦЕНА ЯХТЫ ПО ЗАПРОСУ

**Местонахождение:** United Kingdom

**Длина общая:** 46' 1" (14.05m)

**Ширина:** 14' 3" (4.34m)

**Мин. осадка:** 4' 1" (1.24m)

Купить **ARLETTE — DALE NELSON** а также выбрать подходящую вам яхту из нашего каталога яхт вам поможет опытный яхтенный брокер Андрей Шестаков. На сегодняшний день компания **Shestakov Yacht Sales Inc.** имеет большое количество яхт в собственном списке продаж, а также тесно сотрудничает со всеми крупными яхтенными производителями по всему миру.

Для того чтобы купить яхту **ARLETTE — DALE NELSON** а также проконсультироваться по любому вопросу связанному с покупкой, продажей, чартером яхт позвоните по телефону **+7(918)465-66-44**.

# ОГЛАВЛЕНИЕ

|                               |    |
|-------------------------------|----|
| ОГЛАВЛЕНИЕ                    | 2  |
| ХАРАКТЕРИСТИКИ                | 4  |
| Обзор                         | 4  |
| Основная информация           | 4  |
| Размеры                       | 4  |
| Скорость, вместимость и масса | 4  |
| Размещение                    | 4  |
| Корпус и палуба               | 5  |
| Информация о двигателе        | 5  |
| ПОДРОБНОЕ ОПИСАНИЕ            | 6  |
| Broker's Comments             | 6  |
| Construction                  | 6  |
| Machinery                     | 6  |
| Electrical Systems            | 7  |
| Plumbing Systems              | 8  |
| Tankage                       | 9  |
| Navigation Equipment          | 9  |
| Domestic Equipment            | 10 |
| Accommodation                 | 11 |
| Deck Equipment                | 13 |
| Press Comments                | 15 |
| Исключения                    | 15 |
| Отказ от ответственности      | 15 |
| ФОТОГРАФИИ                    | 16 |
| КОНТАКТЫ                      | 26 |
| Контактная информация         | 26 |
| Телефоны                      | 26 |
| Время работы                  | 26 |

---

Адрес

26

# ХАРАКТЕРИСТИКИ

## Обзор

Hull no.3 - this Classic 45 has the twin 720HP Yanmar option for 34 knot top-out! Beautiful tumblehome on her recently Awlgrippped hull, the 45 is simply a sensational yacht. Oak interior, with heating, two super cabins and unrivalled sea-keeping.

## Основная информация

**Тип судна:** Моторная яхта

**Подкатегория:** Semi-Displacement

**Модельный год:** 2005

**Год постройки:** 2005

**Страна:** United Kingdom

## Размеры

**Длина общая:** 46' 1" (14.05m)

**Ширина:** 14' 3" (4.34m)

**Мин. осадка:** 4' 1" (1.24m)

## Скорость, вместимость и масса

**Водоизмещение:** 35273.96192 Pounds

**Вместимость воды:** 95.894454876  
Gallons

**Объем топливного бака:** 528.344104  
Gallons

## Размещение

**Всего кают:** 2

**Всего коек:** 4

**Всего ком. состава:** 2

## Корпус и палуба

---

**Материал корпуса:** GRP

**Материал палубы:** GRP

**Комплектация корпуса:** Semi-Displacement

**Дизайнер корпуса:** Dale Nelson / TT

## Информация о двигателе

---

**Двигатели:** 2

**Производитель:** Yanmar

**Модель:** 6SY/ZF325

**Тип двигателя:** Inboard

**Тип топлива:** Diesel

---

# ПОДРОБНОЕ ОПИСАНИЕ

---

## Broker's Comments

---

This Dale Nelson Classic 45 was built by Dale for her present owners without regard to cost. This yacht is in first class condition, hull painted with Awlgrip in 2013 and is fitted out with twin 720hp engines, giving a top speed of 34/35 knots. She has been regularly maintained as she was built, with no expense spared. She is in absolutely superb condition having only been lightly used, and her experienced owner only offers her for sale very reluctantly, as the consequence of domestic commitments have regrettably hampered his regular use.

## Construction

---

*RCD Status: The yacht conforms with the essential safety requirements of Directive 94/25EC (Recreational Craft Directive) and is categorised B*

*Hull, Deck & Superstructure Construction:*

- Isophthallic resin to hull moulding.
- Coppercoated (2013).
- Stainless steel rubbing strip fitted in fender section (new fender section 2013).
- Teak toe-rail.
- Unvarnished capping.
- Teak to side decks and cockpit sole, cockpit steps and locker tops.
- Varnished teak cockpit capping.
- White boot-line and white superstructure.
- In 2013, hull painted with Awlgrip Dark Blue.
- Fixed air draft: 3m.

## Machinery

---

*Engine & Gearboxes:*

- 2 x Yanmar 6SY/ZF325 720hp diesel engines with ZF gearbox, electronic troll, electronic

displays and VDO gauges; engine colour white.

- Water cooled exhaust elbows.
- Engine alarms and engine gauges as supplied by manufacturer.
- Main engine exhaust temperature alarms.
- High quality sound proofing in engine room.
- Centre line crawl plates finished in Pirelli blue matting and varnished teak cappings.

#### *Maintenance & Performance:*

- Engine hours: approx. 569 port and 577 starboard at September 2014.
- Commissioning by EP Barrus UK.

#### *Propulsion & Steering:*

- Electric hydraulic trim tabs.
- Volvo BP 800 bow thruster with control at interior helm position.
- Stainless steel steering wheel covered in leather.
- Hydraulic power steering with emergency tiller.
- 4-bladed Hyperform propellers.
- Rope cutters.
- PSS seal stern tube seals.

## **Electrical Systems**

---

#### *Voltage Systems:*

- 12-24V electrics.
- AC distribution system.
- 240V plug points including engine room.

*Battery Banks:*

- DC 12-24V systems – 8 x batteries.
- Domestic and engine battery isolator.
- Engine/domestic battery link switch.
- Battery voltage meter with 2 x battery bank facility.
- Victron battery state monitor for domestic batteries.

*Battery Chargers:*

- 70 amp battery charger.

*Alternators:*

- Engine alternator on each engine.

*Generator:*

- Kohler 6Kva generator located in aft peak.

*Shore Power:*

- Shore power with earth leakage protection.

*Other Electrical:*

- Combined inverter (3000W).

---

## **Plumbing Systems**

---

*Fresh Water & Water Heating System:*

- Fresh water outlet with hot/cold mixer tap in cockpit area.
- Connection to hot water immersion tank (new calorifier 2007).



*Bilge Pumps:*

- 5 x electric bilge pumps.
- 2 x manual bilge pumps.
- Fitted throughout vessel.

## Tankage

---

- Tank tender gauge for fuel, water and black waste.

*Fuel:*

- 440 Gallons / 2,000 litres capacity.
- The fuel is contained within 2 x centreline keel tanks for greater stability.
- Duplex Separ filter system.
- Splash back sumps fitted to fuel deck fillers.
- Flo Scan fuel meter system with consumption gauges at helm.

*Fresh water:*

- 80 Gallons / 363 litres capacity.

*Grey/Blackwater holding tanks:*

- Fitted.
- Black water system with holding tank connected to forward and guest cabins, with deck discharge or macerator and 'direct to sea' options.
- Grey waste tank.

## Navigation Equipment

---

- Clock and barometer fitted to helm console.
- Magnetic compass at helm.
- Air horn.
- Raytheon 230E VHF radio.
- ST 290 Depth, speed and log system (twin displays at helm).
- ST 290 display unit on starboard side of pilot position.
- Raytheon E120 standalone with 4kW radome (2007).
- Raystar GPS.
- Autopilot (course computer type S3G with internal rate gyro) – Raytheon ST 290 pilot control, ST 290 wind system with analogue display unit.
- Sea-me active radar reflector.
- USB and Seataalk connections at helm.
- Navtex 6+ (2007).
- Additional GPS up aerial with change over system (fitted 2007).
- IR/night vision camera to cockpit and engine room (2007).

## Domestic Equipment

---

### *General:*

- Refrigerator below navigator seat.

### *Galley:*

- Blue Ridge colour Corian galley top.
- Moulded one and a half sinks with lift out Corian tops; hot and cold mixer taps.
- Knife stowage to galley worktop within the Corian worktop.
- Fridge to galley lower unit.
- Electric hob with fiddle rail.

- Panasonic microwave oven.
- Top entry bin in galley top.
- Upper outboard lockers and lower cupboards and various other storage spaces.

#### *Heads/Showers:*

- Jabsco electric WCs to each heads compartment.

#### *Heating & Ventilation:*

- Ventilators to each cabin, heads and aft peak.
- 2 x Extractor fans in engine room.
- Eberspacher D5L heating with outlets to all areas including heads.

#### *Entertainment:*

- CD auto changer fitted to tape/radio in wheelhouse with speakers to wheelhouse and galley areas.

#### *Lighting:*

- Lighting throughout.
- Searchlight handheld with power socket outboard of helm position on vertical face of console cockpit.

---

## **Accommodation**

---

#### *Summary of Accommodation:*

- Forward double owners cabin, with upholstered side seat, en-suite heads and shower, full storage and hanging facilities.
- Twin guest cabin with en-suite heads and shower, and full storage and hanging cupboards.
- Spring upholstered mattresses throughout.

- Interior timber in European Oak.
- Locker doors with Rattan centre panels.
- Grab handles throughout.
- Leather 'U' shaped and side seating.
- Leather helm and pilot seats.
- Blinds fitted to side windows and cabin port-lights.
- Oak veneer to wheelhouse and galley with brown oak inlay with protective runner carpet to wheelhouse.
- Leather upholstered interior helm console with burr oak inset panels.

#### *Hatches, Portlights and Windows:*

- 5 x square hatches fitted to forward coach roof with sun and insect blinds to cabin hatches.
- 2 x square hatches fitted to wheelhouse roof, wheelhouse windows – green tinted glass; 10 x portlights with green tinted glass.
- Deck hatches either side of foredeck.
- Wheelhouse forward side windows slide opening – aft side windows fixed with green tinted glass.
- Wheelhouse front windows double-glazed.

#### *Wheelhouse/Saloon:*

- Helm seat base equipped with 12 bottle and 16 glass holders.
- U-shaped leather seating with folding leaf table (convertible to berth).
- Storage lockers beneath seating.
- Timber footrests and storage at helm position.
- Upholstered seating to starboard side of wheelhouse.
- Helm and pilot seats with sliders and arm rests.
- Bookrack fitted outboard of seat for stowage of pencils/dividers etc.

- Handrails.
- Wheelhouse side shelves.
- Electrically operated window at bulkhead on port side.
- Chart table.
- Stowage for remoable chart table and charts.
- 3 x Pantograph windscreen wipers with intermittent control and washer system.
- Wiper controls at helm and additional control for intermittent wipe outboard.

## Deck Equipment

---

### *General:*

- Stainless steel pulpit to foredeck.
- Exterior teak handrails to forward coach-roof, wheelhouse coachroof and wheelhouse sides.
- Stainless steel grab-rail to aft end of wheelhouse wings with green tinted glass panel.
- Hinge down teak timber mast.
- Boarding platform with teak grating and stainless steel swim ladder.
- Sea water deck and anchor wash system in foredeck locker.
- Stainless steel flagstaff fitted to transom.

### *Anchoring & Mooring Equipment:*

- Stem-head carrier with stainless steel bow protector plate.
- 1 x Pair of super-yacht full length mooring cleats to foredeck.
- 2 x Pairs of pop up mooring cleats to side deck.
- 1 x Pair of bollard type mooring cleats to aft deck.
- 3 x Fairleads to bow.
- Chafing plates.

- Centre bollard to foredeck.
- Electric anchor windlass with 40m galvanised steel chain with 40m warp.
- Chain gypsy and rope drum with interior and foredeck controls.
- 30kg stainless steel claw anchor.
- Fender pad eyes fitted to sides of cockpits.
- Mooring lines.
- Fenders.
- Boat hook.

#### *Covers, Canvas & Cushions:*

- Bimini.
- Cockpit awning.
- Fully fitted forward and corner seating with cushions and storage beneath.
- Full cockpit canopy (2007).

#### *Tender & Outboard:*

- Stowage compartment to cockpit sole for dinghy; 3 x access and stowage hatches.
- Weaver snap davit system; teak outboard stowage bracket in aft peak.

#### *Safety Equipment:*

- 6-man (in date until 2015) valise liferaft.
- Horseshoe lifebelt.
- EPIRB – Sartech satellite 406.
- Spares for both engines and generator.
- Spare bulbs.

### *Fire-fighting equipment:*

- Automatic fire extinguisher system in engine room.
- Fire extinguishers throughout including aft peak and automatic engine room system.
- Fire blanket.

## **Press Comments**

---

### *Motor Boat & Yachting:*

“It only takes a few moments of gazing across the pontoons at Dale’s new Classic 45 to suss out what this lovely boat is all about: it’s a gentleman’s plaything, a whimsy, an object of beauty to be admired more than used in earnest. And there’s surely nothing wrong with that notion. Even more than second homes and flash cars, our boats are indulgences – probably the greatest extravagances of all. Why should we need any justification other than aesthetics for spending your hard-earned on a whimsy?”

Step on board though, and that initial presumption begins to crumble. The 45 seems to be extraordinarily sturdily built for a gentleman’s plaything. Not only is the build quality exceptional, but the engineering installation is clearly designed by people who have ventured far offshore and have prepared the 45 for the rigours of life at sea. Further evidence of this comes in the form of the 45’s RCD rating: it is one of the very few boats built to Category A, despite its Sunday-on-the-river looks?”

## **Исключения**

---

При продаже яхты исключаются личные вещи владельца.

## **Отказ от ответственности**

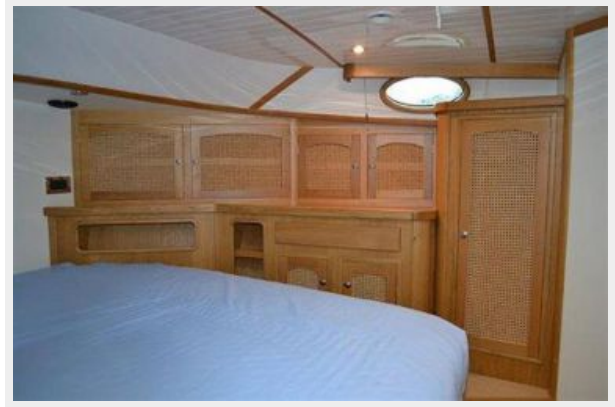
---

Компания предоставляет описание судна или яхты добросовестно, но не может гарантировать точность этой информации, а также не ручается за техническое состояние. Покупатель должен проинструктировать своих агентов или оценщиков исследовать представленную информацию более подробно, по собственному желанию. Продажа судна или яхты, изменение цены или снятие с продажи будет происходить без предварительного уведомления.

# ФОТОГРАФИИ





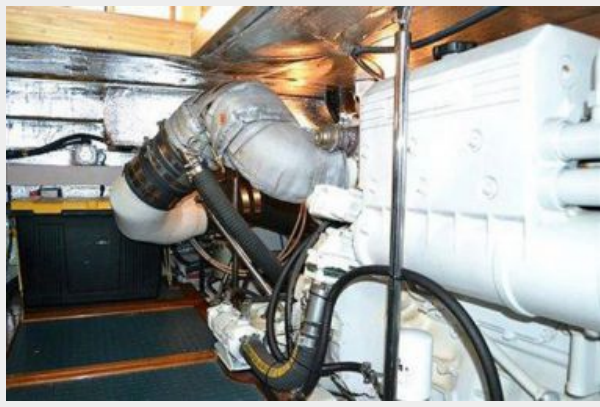




















# КОНТАКТЫ

Андрей Шестаков (Andrey Shestakov) – ведущий яхтенный брокер отдела продаж яхт и судов компании Shestakov Yacht Sales Inc. Официальный представитель Shestakov Yacht Sales Inc. для русскоговорящих клиентов в центральном офисе компании в Майами/Форт Лодердейл/Флорида/США.

## Контактная информация

Email: [andrey@shestakovyachtsales.com](mailto:andrey@shestakovyachtsales.com)

Web: [shestakovyachtsales.com](http://shestakovyachtsales.com)

## Телефоны

Краснодарский край: **+7(918)465-66-44**

США, Майами, Флорида: **+1(954)274-4435**

## Время работы

Понедельник – Суббота: **9:00 - 21:00**  
EDT

Воскресенье: **Закрито**

## Адрес



Harbour Towne Marina, 850 NE 3rd St,  
STE 213, Dania, FL 33004