

## SOLO CONTIGO — AZIMUT



**Builder:** [AZIMUT](#)

**LOA:** 85' 0" (25.91m)

**Year Built:** 2009

**Beam:** 21' 0" (6.40m)

**Model:** Motor Yacht

**Price:** PRICE ON APPLICATION

**Location:** United States

Our experienced yacht broker, Andrey Shestakov, will help you choose and buy a yacht that best suits your needs **Solo Contigo — AZIMUT** from our catalogue. Presently, at Shestakov Yacht Sales Inc., we have a wide variety of yachts available on our sale's list. We also work in close contact with all the big yacht manufacturers from all over the world.

If you would like to buy a yacht **Solo Contigo — AZIMUT** or would like help answering any questions concerning purchasing, selling or chartering a yacht, please call **+1(954)274-4435**

---

# TABLE OF CONTENTS

---

TABLE OF CONTENTS	2
SPECIFICATIONS	3
Overview	3
Basic Information	3
Dimensions	3
Speed, Capacities and Weight	3
Accommodations	3
Hull and Deck Information	3
Engine Information	4
DETAILED INFORMATION	5
Solo Contigo	5
Exclusions	19
Disclaimer	19
PHOTOS	20
CONTACTS	30
Contact details	30
Telephones	30
Office hours	30
Address	30

---

# SPECIFICATIONS

---

## Overview

---

The highly upgraded 85 Azimut 'Solo Contigo' is now on the market for sale or charter. Four luxurious guest cabins, Trac fin stabilizers and up-to-date AV equipment makes this 2009 feel more like a 2014. Come see what all the fuss is about. She is currently laying at Miami Beach Marina.

## Basic Information

---

**Category:** Motor Yacht

**Model Year:** 2009

**Year Built:** 2009

**Country:** United States

## Dimensions

---

**LOA:** 85' 0" (25.91m)

**Beam:** 21' 0" (6.40m)

## Speed, Capacities and Weight

---

**Displacement:** 187392 Pounds

## Accommodations

---

**Total Cabins:** 4

**Total Heads:** 5

## Hull and Deck Information

---

**Hull Material:** Fiberglass

---

## Engine Information

---

**Engines:** 2

**Manufacturer:** Caterpillar

**Model:** C32

**Engine Type:** Inboard

**Fuel Type:** Diesel

---

# DETAILED INFORMATION

---

## Solo Contigo

---

### TOPSIDES

Teak over integral fiberglass swim platform

Steps to aft deck, three port and three starboard, with stainless steel handrails

Two 100-amp Cablemasters, starboard in locker

Passarelle, port

Hubbell telephone/television inlet, starboard in transom locker

Freshwater shower and deck washdown, starboard

Two courtesy lights, port and starboard

Waste pumpout in starboard locker Outdoor furniture on flybridge, aft deck, and foredeck

### DECKS & SUPERSTRUCTURE

Teak over fiberglass deck

Stainless steel bow rails and stanchions; flagstaff at bow

Stainless steel bow bollards, port and starboard, with hawse eyes

Stainless steel anchor chute and windlass platform

Lofrans anchor windlass

Approximately 250-lb Fjord anchor with approximately 300' of chain

Hatch, port and starboard forward to chain locker

Hatch to Bosun's locker in forward superstructure

Deck courtesy lights

Port and starboard locker in trunk cabin

Freshwater shower connection with hot/cold water faucet in starboard locker

Sun lounge area, centerline, with cushions

Sun shield for the pilothouse windows

Door to galley, port

Spring cleat/bollards, port and starboard

Fuel fills, port and starboard

Entrance to crew companionway, starboard aft

Navigation light, port and starboard

Recessed lights in overhang, four port and four starboard

Fire station in locker, starboard aft on side deck with 20m of 50mm hose

Fire station in chain locker with 20m of 50mm hose

Two windshield wipers

Water fill, port and starboard aft

## **FLYBRIDGE**

Teak over fiberglass deck

Radar arch with:

- Recessed lights
- Four JL Audio stereo speakers and subwoofer
- Two remote operated searchlights
- Mast with anchor light and forward navigation light and stern light
- VHF antenna
- Lightning dissipater
- VHF antenna

Retractable top canvas

Tinted windscreen with stainless steel frame

Azimut steering wheel

Zenith compass

Raymarine VHF radio

Raytheon ST6002 autopilot

Two Raymarine G-series depth displays

ZF electronic clutch and throttle controls

Two Caterpillar digital displays

American bow and stern thruster control panel

ITT Jabsco searchlight and control panel with intercom switches

Storage compartments, port

Double bench-type helm chair, starboard, with storage and cover

Large sun pad area, port of helm

Wet bar, aft of helm benchseat, with sink with hot and cold water faucet, Isotherm refrigerator, and Fusion stereo

## **BOAT DECK**

Teak over fiberglass deck

Fiberglass non-skid deck, aft

Stairwell to aft deck

24" life ring, port and starboard

Opacmare davit

Lynx stainless steel barbecue grill

Two deck drains, aft

Stainless steel railings, aft

## **AFT DECK**

Fiberglass overhead with recessed lights and two stereo speakers

Teak over fiberglass deck

Lofrans warping windlass, port and starboard

Stern bollard, port and starboard

---

Stainless steel rail and stanchions

Stainless steel gates to swim platform, port and starboard

Curved benchseat, aft, with cushions- New in 2011

Teak dual pedestal mounted table, forward of seat with deck chairs

Isotherm refrigerator at port forward entertainment center

Sliding stainless steel door to salon, forward

Passerelle controls integral to port handrail at dinette

## **ENGINE ROOM**

Diamond plate deck

Two Kohler 32-kw generators with 3030 hours

Two generator exhaust/water separators

Two engine room extractors

Two engine room induction blowers

Dual Racor 1000 fuel filters to each engine

Dual Racor 500 fuel filters to each generator

Hand-operated bilge pump, starboard forward

Electric/automatic bilge pump

High water alarm

Drippless shaft seals

220-volt fire pump

24-volt bilge pump to 6 compartment manifold

Two air conditioning raw water cooling pumps, port aft

Two air conditioning chilled water circulation pumps, port aft

Main engine battery cut-off switches, aft

Two Cruisair air conditioning compressors



---

Lube oil tank, centerline aft below deck

Oil change pump to manifold

Emergency battery parallel switch

Manual fuel transfer pump, forward port

12-volt, Group 30 battery to each generator with cutoff switch

Day fuel tank, forward in engine room

Auxiliary raw water intakes, port and starboard forward

ZF Cruise Command control boxes

Discharge of oil placard

Waste discharge placard

Sixteen 6-volt batteries, centerline, to ships service

Two 8D batteries to each engine [aft of each engine]

CCTV camera

Watertight entry door, aft

Mastervolt 24-volt 50-amp charger [engines]

Two Mastervolt 24-volt 100-amp charger [ship's service]

Two hydraulic cooling pumps, aft

Hydraulic reservoir, aft

Mastervolt 12-volt charger [generators]

Diverter valve plumbed off of the starboard engine raw water intake for emergency bilge pumping capabilities

Two SAE shore power conditioners/transformers with digital meter

Caterpillar gauge cluster, port and starboard

Electric/hydraulic pack to passerelle

Two electric/hydraulic pumps to central hydraulic system

Idromar watermaker

Intercom with headset

## **CREW COMPANIONWAY**

Entrance from swim platform, engine room, and starboard side deck

Vinyl overhead

Vinyl wall covering

Three steps down from swim platform

Access to the port steering hydraulic cylinder below dinette

Miele T8013C clothes dryer

Miele W3033 clothes washer

Cruisair air conditioning control panel

Cherry paneling and molding

Cherry table

Sony stereo

Dinette, aft

Two stereo speakers

Isotherm refrigerator

Watertight door to engine room

Emergency escape from engine room

Recessed overhead lights

## **PORT CREW'S QUARTERS**

Vinyl overhead with three lights

Two single berths, outboard, with reading light

Porthole with curtains

Hanging locker, inboard

Shower sump tank with pump under sole

Access to port rudder

Cruisair air conditioning control

## **CREW QUARTERS HEAD**

Access from crew's companionway

Wood grate sole

Two recessed lights

Marble countertop with sink

Mirrored medicine cabinet, outboard, with porthole

Tecma toilet

Exhaust blower

110-volt GFCI outlet in overhead

Shower head on hose with mixing valve and wall mount

## **STARBOARD CREW'S QUARTERS**

Laminate sole

Vinyl overhead with three recessed lights

Upper and lower berth, outboard

Two drawers, under lower berth

Porthole, outboard, with curtains

Hanging locker, inboard

Access panel forward of upper berth to two 30-KG CO2 cylinders

Cruisair air conditioning control

## **RUDDER COMPARTMENT**

---

Entry from crews quarters

Hold light in safety cage

110-volt GFI outlet

Access to steering gear

Intercom speaker

Hydraulic steering actuator

Two 100-amp Cablemaster shore cord reels and collector bins

Emergency steering wheel with isolation valves

Nuvair dive compressor with control panel and two fill whips

Rudder feedback sensor

Hydraulic pack for trim tabs

Hydraulic steering pump

## **PILOTHOUSE**

One step up from galley companionway

Laminate sole

Vinyl overhead with overhead lights

Bench helm chair [electrically controlled]

White Star compass

ITT Jabsco searchlight control

American bow and stern thruster control panel

ZF electronic engine controls

Port and starboard CGT touch screen displays to engines

Steering wheel

TRAC Stabilizer control panel

Rudder angle indicator

Smart Power Management screen to central hydraulics

KVH Via satellite broadband antenna controller unit

Came CCTV control panel

Raymarine Ray 218 VHF radio

Raymarine ST6002 autopilot

Intercom control panel

Dinette, port, with curved benchseating, storage, and wood table

Cruisair SMX IR air conditioning control

Raymarine ST70 knot log

Raymarine ST70 depth display

D&G alarm, monitoring, and touchscreen controller to:

- Navigation systems
- Fans
- 220-volt 24-volt systems
- Tanks
- Bilges
- Smoke detection
- Information screens
- Two Raymarine G-series chart plotter/radar/CCTV displays
- Yacht Controller wireless dockside control

## **GALLEY**

Entrance starboard forward of salon

Cherry sole

Overhead panels with recessed lights

Stainless steel countertops and backsplash

Two stainless steel sinks with single-lever hot/cold water faucet

Sub-Zero refrigerator

Gaggeneau 5-burner stovetop with overhead work light and exhaust fan

Gaggenau oven

Gaggenau dishwasher

Watertight door to starboard side deck

Built-in storage cabinets

(2) Pass-through to dining salon with tambour door on track and with three overhead lights

Cruisair SMX IR air conditioning controls

General Electric microwave

## **DAY HEAD**

Starboard aft of galley

Cherry sole

Vinyl paneling overhead with recessed lights

Tecma toilet

Vanity with porcelain sink with hot and cold-water faucet, mirror and storage under

Deadlight with drop shade

Exhaust blower

## **DINING SALON**

Cherry sole

Vinyl headliner with recessed lights and wood recess

Window drop shades; valence rope lighting

Glass topped table with eight chairs

Sub-Zero wine cooler

Cherry buffet separating dining area from salon

## **SALON**

Entrance via aft deck via sliding doors with drapes

Cherry sole

Vinyl overhead with cherry recess

Recessed soffit with rope lighting overhead

Recessed overhead lights

U-shaped leather sofa, port, with storage

Window drop curtains and drape

Leather loveseat, starboard

Cruisair SMX IR air conditioning control

NuVo stereo amp

Arcam DVD player

Samsung flat panel television on electric lift

## **FORWARD COMPANIONWAY**

Carpeted sole

Vinyl overhead

Recessed overhead lighting

## **UNDER FORWARD COMPANIONWAY**

Hold light

TRAC stabilizer control box

Black water tank, aft

Black water pump

Grey water pump

Two hot water circulating pumps

High water alarm

Gray water tank, aft of black water tank

## **BOW STATEROOM**

Carpeted sole

Vinyl overhead with indirect lighting

Queen berth

Two reading lights in soffit above head of bed

Nightstand, port and starboard outboard of berth

Dead lights, port and starboard outboard, with curtains

Hanging locker, port and starboard, each with light

Telephone jack

Cruisair SMX IR air conditioning control panel

Kidde dry chemical fire extinguisher, no tag

Two swing arm lamps

Phillips television

## **UNDER BOW STATEROOM SOLE**

Two electric water heaters

Bow thruster unit and associated hydraulics

## **BOW STATEROOM HEAD**

Entrance port aft in VIP stateroom Cherry sole

Overhead paneling with three recessed lights

Vanity with porcelain sink with hot/cold water faucet and storage

Tecma toilet

Porthole, outboard, behind sliding mirrored door



Shower stall with door, water jets, hot and cold water showerhead, grate sole, and overhead light

## **PORT STATEROOM**

Carpeted sole

Vinyl overhead with recessed lights and wood insert

Nightstand with storage

Telephone jack

Porthole, outboard, with curtains

Philips LCD television

Kidde 10BC dry chemical fire extinguisher, no tag

Entrance to head

Inboard queen berth

Cruisair SMX IR air conditioning control

## **PORT STATEROOM HEAD**

Cherry sole

Overhead panels with recessed lights

Porthole, outboard, with miniblinds

Vanity with porcelain sink with hot/cold water faucet and with storage

Tecma toilet

Beveled mirror

Shower stall with door, showerhead with wall mount, hot and cold-water faucet, water jets, overhead light, grate sole

## **STARBOARD STATEROOM**

Carpeted sole

Vinyl overhead with recessed lights

Single berths, inboard and outboard

Nightstand with storage

Telephone jack

Porthole, outboard, with drop shade

Hanging locker with light

Cruisair SMX IR air conditioning control

Philips LCD television/DVD player

10BC dry chemical fire extinguisher, no tag

## **STARBOARD STATEROOM HEAD**

Cherry sole

Mica overhead with recessed lights

Porthole, outboard, with miniblinds

Marble vanity with porcelain sink with hot/cold water faucet and with storage

Tecma toilet

Shower stall with door, hot and cold-water showerhead with wall mount, water jets, overhead light, grate sole

Beveled mirror

## **MASTER STATEROOM**

Carpeted sole

Vinyl overhead with indirect lighting, custom wood panel, recessed lights

Two recessed reading lights on soffit above head of bed

King-sized berth, centerline, with storage

Built-in nightstand, port and starboard

Porthole, port and starboard outboard, with drop shades

Built-in vanity, starboard, with storage and lift-up mirror

Panasonic LCD television

Telephone jack

Walk-in closet

Cruisair SMX IR air conditioning control

Central vacuum inlet

## **MASTER STATEROOM HEAD**

Entrance port forward in master stateroom

Marble sole

Mica overhead with four recessed lights

Tecma toilet

Marble vanities drawers, port and starboard, with two porcelain sinks with two hot/cold water faucets; storage below

Porthole, outboard, with curtains

Shower stall, hot and cold shower head with wall mount water jets, and grate sole

## **Exclusions**

---

Owner's personal belongings.

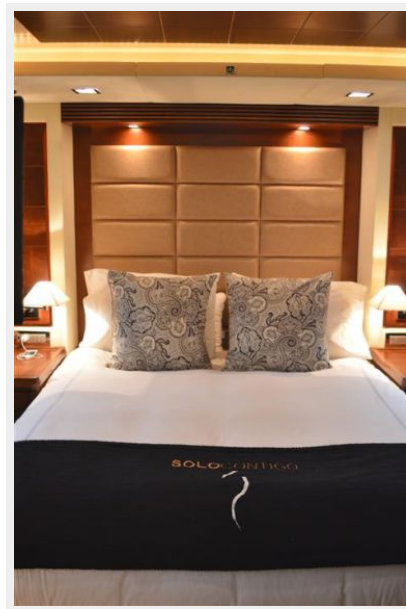
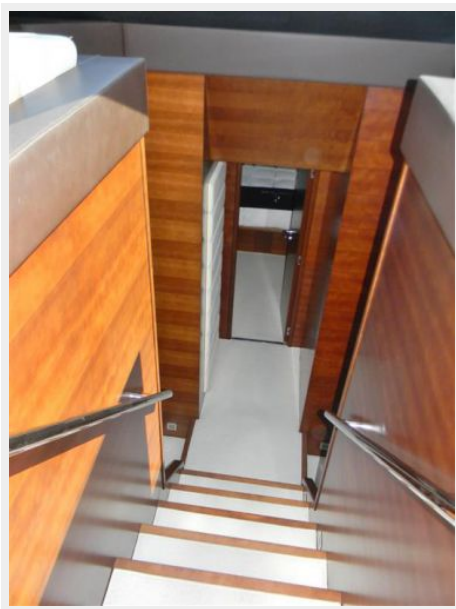
## **Disclaimer**

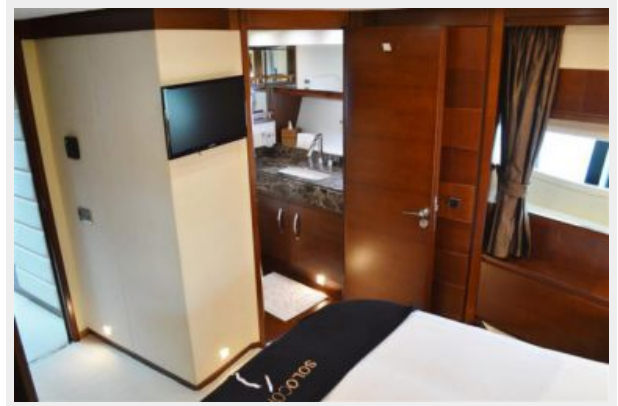
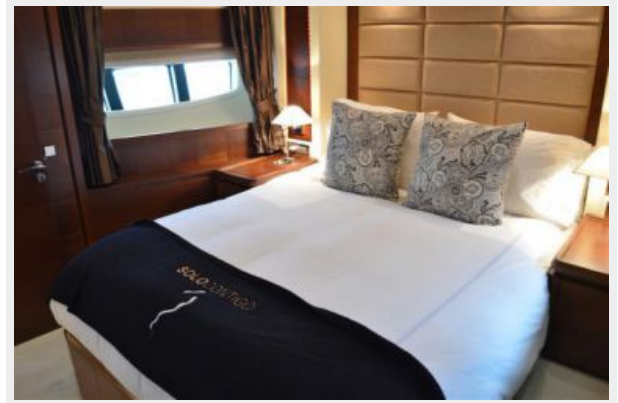
---

The Company offers the details of this vessel or yacht in good faith but cannot guarantee or warrant the accuracy of this information nor warrant the condition of the vessel. A buyer should instruct his representatives, agents, or his surveyors, to investigate such details as the buyer desires validated. This vessel or yacht is offered subject to prior sale, price change, or withdrawal without notice.

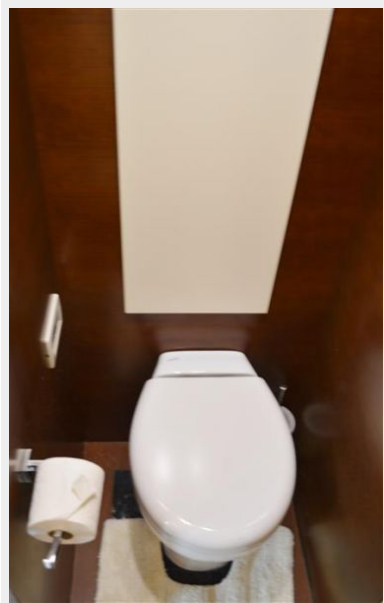
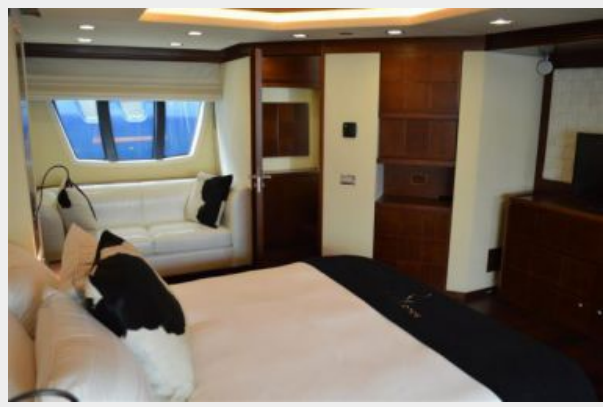
# PHOTOS























# CONTACTS

---

Andrey Shestakov, leading yacht broker of the sales department of Shestakov Yacht Sales Inc. Shestakov Yacht Sales Inc., the official representative of the Miami/Fort Lauderdale FL headquarters.

## Contact details

---

Email: [andrey@shestakovyachtsales.com](mailto:andrey@shestakovyachtsales.com)

Web: [shestakovyachtsales.com/en/](http://shestakovyachtsales.com/en/)

## Telephones

---

USA: +1(954)274-4435

## Office hours

---

Monday – Saturday: **9:00 - 21:00** EDT

Sunday: **closed**

## Address

---



Harbour Towne Marina, 850 NE 3rd St,  
STE 213, Dania, FL 33004