

FREEDOM — BAHAMA BOAT WORKS



Builder: BAHAMA BOAT WORKS

Year Built: 2008

Model: Motor Yacht

Price: PRICE ON APPLICATION

Location: United States

LOA: 31' 0" (9.45m)

Beam: 10' 9" (3.28m)

Max Draft: 2' 3" (0.69m)

Our experienced yacht broker, Andrey Shestakov, will help you choose and buy a yacht that best suits your needs **Freedom — BAHAMA BOAT WORKS** from our catalogue. Presently, at **Shestakov Yacht Sales Inc.**, we have a wide variety of yachts available on our sale's list. We also work in close contact with all the big yacht manufacturers from all over the world.

If you would like to buy a yacht **Freedom — BAHAMA BOAT WORKS** or would like help answering any questions concerning purchasing, selling or chartering a yacht, please call **+1(954)274-4435**

TABLE OF CONTENTS

TABLE OF CONTENTS	2
SPECIFICATIONS	4
Overview	4
Basic Information	4
Dimensions	4
Speed, Capacities and Weight	4
Accommodations	4
Hull and Deck Information	4
Engine Information	5
DETAILED INFORMATION	6
Remarks	6
Updates	6
Helm and Hardtop	6
Electronics and Navigation	6
Forward Cockpit	7
Aft Cockpit	7
Head	7
Exclusions	7
Disclaimer	7
Exclusions	8
Disclaimer	8
PHOTOS	9
Centerline	9
Helm and Electronics	9
Electronics	9
Cockpit	9
Transom Livewell and Work Station	9
Leaning Post Tackle Storage	9

Freezer Fish Box	10
Head and Battery Lock	10
Hardtop	10
Hardtop	10
Bow Profile	10
Bow	10
Bow 2	11
Electrical Access	11
Transom	11
Cowlings	11
Port Profile	11
Starboard Profile	11
CONTACTS	12
Contact details	12
Telephones	12
Office hours	12
Address	12

SPECIFICATIONS

Overview

Galati Yacht Sales has been committed to exceeding the expectations of its customers for more than 42 years, and we understand that purchasing a boat is a big decision. Our professional staff is here to assist you in every way – before, during and after the sale. Please feel free to contact us with any questions that you may have.

Basic Information

Category: Motor Yacht

Model Year: 2008

Year Built: 2008

Country: United States

Cockpit: Yes

Dimensions

LOA: 31' 0" (9.45m)

Beam: 10' 9" (3.28m)

Max Draft: 2' 3" (0.69m)

Speed, Capacities and Weight

Displacement: 24640 Pounds

Water Capacity: 50 Gallons

Holding Tank: 10 Gallons

Fuel Capacity: 368 Gallons

Accommodations

Total Heads: 1

Hull and Deck Information

Hull Material: Fiberglass

Engine Information

Engines: 2

Manufacturer: Yamaha

Model: F350XCA

Engine Type: Outboard

Fuel Type: Gas

DETAILED INFORMATION

Remarks

Yamaha ESC until February 5, 2016

The Bahama 31 is a proven leader in custom center consoles in this size range. It exhibits superior quality in construction and design which are well reflected in its terrific ride. Known for its stability with a 10' 9" beam the Bahama carries great poise when the seas turn unfavorable.

This 2008 just received a gorgeous new flag blue hull paint and matching underside of the hull top. She has very low hours on her new 2013 Yamaha 350's as well.

Updates

- New Yamaha 350's (2013)
- New Radar (2014)
- New Hull Paint (2014)

Helm and Hardtop

- Fiberglass Hard Top with Anodized Aluminum Frame
- Edson Steering Wheel
- Removable Bolster
- Forward and Aft Facing Floodlights
- (2) Lee's Skiff Type Outriggers
- 6-Rod Rocket Launcher
- Overhead Electronics Box

Electronics and Navigation

- Garmin 5212 Radar Scanner
- ICOM IC-M504 VHF Antenna
- AM/FM Antenna
- MB Quart Audio Speakers
- (2) Garmin 5212 GPS (3) Garmin GPS Antennas
- Sirius Satellite Radio Antenna
- Garmin TR-1 Autopilot
- Ritchie Magnetic Compass
- Furuno RD-30
- Single Lever Yamaha Engine Controls

- Yamaha Digital Speed Indicator
- (2) Yamaha Digital Tachometers
- Yamaha Digital Fuel Management Unit
- Trim Tab Controls

Forward Cockpit

- Fiberglass Non-Skid Deck
- Chain Locker with Fortress FX-16 Anchor
- Combination Navigation Light at Bow
- (2) Stainless Steel Pop-Up Cleats
- Cold Plate in Centerline Deck Box

Aft Cockpit

- Fiberglass Non-Skid Deck
- Helm Bench Seat with Custom Tackle Lockers
- Removable Bench Seat, Aft
- Gunwale Mounted Rod Holders
- Swim Platform Gate, Port
- Livewell in Transom
- Sink with Freshwater and Saltwater Wash Down
- Locker, Starboard Aft

Head

- Locker, Aft
- Galley Maid Electric Head
- Saltwater Washdown Pump

Exclusions

Owner's personal property.

Disclaimer

The Company offers the details of this vessel in good faith but cannot guarantee or warrant the accuracy of this information nor warrant the condition of the vessel. A buyer should instruct his agents, or his surveyors, to investigate such details as the buyer desires validated. This vessel is

offered subject to prior sale, price change, or withdrawal without notice.

Exclusions

Owner's personal belongings.

Disclaimer

The Company offers the details of this vessel or yacht in good faith but cannot guarantee or warrant the accuracy of this information nor warrant the condition of the vessel. A buyer should instruct his representatives, agents, or his surveyors, to investigate such details as the buyer desires validated. This vessel or yacht is offered subject to prior sale, price change, or withdrawal without notice.

PHOTOS

Centerline



Helm and Electronics



Electronics



Cockpit



Transom Livewell and Work Station



Leaning Post Tackle Storage



Freezer Fish Box



Head and Battery Lock



Hardtop



Hardtop



Bow Profile



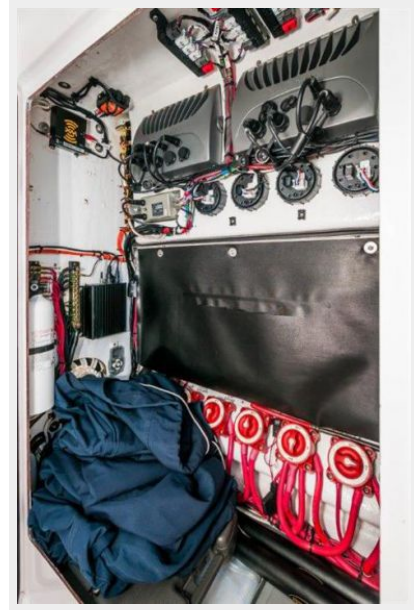
Bow



Bow 2



Electrical Access



Transom



Cowlings



Port Profile



Starboard Profile



CONTACTS

Andrey Shestakov, leading yacht broker of the sales department of Shestakov Yacht Sales Inc. Shestakov Yacht Sales Inc., the official representative of the Miami/Fort Lauderdale FL headquarters.

Contact details

Email: andrey@shestakovyachtsales.com

Web: shestakovyachtsales.com/en/

Telephones

USA: +1(954)274-4435

Office hours

Monday – Saturday: **9:00 - 21:00** EDT

Sunday: **closed**

Address



Harbour Towne Marina, 850 NE 3rd St,
STE 213, Dania, FL 33004