

SUMMER BREEZE — OCEAN YACHTS



Судостроитель: [Ocean Yachts](#)

Год постройки: 2004

Модель: Катер для спортивной рыбалки

Цена: **ЦЕНА ЯХТЫ ПО ЗАПРОСУ**

Местонахождение: United States

Длина общая: 52' 0" (15.85m)

Ширина: 16' 4" (4.98m)

Макс. осадка: 4' 4" (1.32m)

Крейс. скорость: 31 Kts. (36 MPH)

Макс. скорость: 35 Kts. (40 MPH)

Купить **Summer Breeze — Ocean Yachts** а также выбрать подходящую вам яхту из нашего каталога яхт вам поможет опытный яхтенный брокер Андрей Шестаков. На сегодняшний день компания **Shestakov Yacht Sales Inc.** имеет большое количество яхт в собственном списке продаж, а также тесно сотрудничает со всеми крупными яхтенными производителями по всему миру.

Для того чтобы купить яхту **Summer Breeze — Ocean Yachts** а также проконсультироваться по любому вопросу связанному с покупкой, продажей, чартером яхт позвоните по телефону **+7(918)465-66-44**.

ОГЛАВЛЕНИЕ

ОГЛАВЛЕНИЕ	2
ХАРАКТЕРИСТИКИ	6
Обзор	6
Основная информация	6
Размеры	6
Скорость, вместимость и масса	6
Размещение	7
Корпус и палуба	7
Информация о двигателе	7
ПОДРОБНОЕ ОПИСАНИЕ	8
Salon	8
Galley/Dinette	8
Master Stateroom	8
Master and Guest Heads (3 Heads)	9
Guest/Crew Stateroom (3rd Stateroom)	9
Companionway	10
Lighting System	10
Fly Bridge	10
Electronics	11
Electrical System	11
Safety and Navigation	11
Deck and Outfitting	12
Cockpit	12
Water System	13
Optional Equipment Onboard Summer Breeze	13
Additional Options	14
Engine Room and Propulsion	14
Исключения	15

Отказ от ответственности	15
ФОТОГРАФИИ	17
Spacious Gourmet Galley, New Updated Layout	17
Open Area Salon	17
Master Suite	17
Spacious Updated Flybridge	17
Salon, Adjustable Table	17
Spacious Salon	17
Salon Open Layout	18
Spacious Countertops	18
U Shaped Galley, Sub Zero Refrigeration Drawers	18
Large Dinette	18
Sub Zero Refrigeration Drawers	18
Galley	18
Satellite TV	19
Master Suite	19
Master Suite	19
Vanity in Master Suite	19
Master Suite Vanity	19
Vip Walk Around Berth	19
Master Head	20
Excellent Storage VIP	20
3 Heads	20
3 Head s	20
Third Stateroom	21
Third Stateroom	21
3 Heads	21
Separate Washer and Dryer	21
Cedar Lockers	22

Air Conditioned Flybridge Open Seating	22
Updated Helm	22
Bridge Seating	22
Spacious Bridge Seating	22
Enclosed Air Conditioned Bridge	22
Flybridge Night View	23
Flybridge Night View	23
Garmin Updated Electronics	23
Bridge Seating	23
Bose Entertainment System	23
Ground Tackle and Windlass	23
Auto Retrieve 50 amp Shore Power	24
Cockpit Bait Prep	24
Bridge Access/Safety Glass Top	24
Cockpit/Release Rocket Launcher	24
Cockpit Live Well	24
Cockpit Release Table	24
Night Cockpit	25
Aft Night Photo	25
Sparkling Clean Engine Room	25
Engine Room Spotless Bilges	25
Port Engine Gear	25
Racor Fuel Filters	25
Westerbeke 12.5kw Generator with 632 Hours	26
Four Cruisair Compressors	26
Cruisair A/C	26
Easy Access Batteries	26
Reverso Auto Oil Change System	26
Sentry Battery Charger	26

Starboard Engine	27
Port Engine	27
Bridge 360 Degree Excellent Visibility	27
Profile	27
Profile	27
Profile	27
Profile	28
Profile	28
Stern	28
КОНТАКТЫ	29
Контактная информация	29
Телефоны	29
Время работы	29
Адрес	29

ХАРАКТЕРИСТИКИ

Обзор

WOW...brand new listing, Ocean Yachts 52 Super Sport...Stop, Stop, Stop!!! Are you looking for the perfect Sport Fish Yacht? If so, look no further. "Summer Breeze" is loaded with options and current upgrades and has been professionally maintained to the 10s! Like new and super clean, she has been cruised more than she has been fished and is ready for her new owner. With 3 luxurious staterooms, 3 heads and AC/heat on the flybridge, she is well equipped to house family and guests during extended fishing or cruising trips. This is the perfect yacht and the next 52 SS to be SOLD! Don't miss this opportunity to take the helm of this sophisticated yacht.

The 52 SS sets itself apart from other yachts with its enhanced performance. With close to 450 hours and top end at approximately 35 knots, the reliable Series 60 diesels perform superbly in all sea conditions. All pictures are of "Summer Breeze" Ocean 52 SS and are current as of 9/1/14. Call now to see this magnificent yacht, easy to inspect anytime. She won't last long on the market.

Основная информация

Тип судна: Катер для спортивной рыбалки

Модельный год: 2004

Год постройки: 2004

Страна: United States

Размеры

Длина общая: 52' 0" (15.85m)

Ширина: 16' 4" (4.98m)

Макс. осадка: 4' 4" (1.32m)

Трапы: 17' 6" (5.33m)

Скорость, вместимость и масса

Крейс. скорость: 31 Kts. (36 MPH)

Макс. скорость: 35 Kts. (40 MPH)

Водоизмещение: 56000 Pounds

Вместимость воды: 150 Gallons

Вместимость сточного бака: 55 Gallons

Объем топливного бака: 860 Gallons

Размещение

Всего кают: 3

Всего ком. состава: 3

Корпус и палуба

Материал корпуса: Fiberglass

Отделка корпуса: Aluminum

Информация о двигателе

Двигатели: 2

Производитель: Detroit Diesel

Модель: Series 60

Тип двигателя: Inboard

Тип топлива: Diesel

ПОДРОБНОЕ ОПИСАНИЕ

Salon

- Aluminum sliding door w/ security lock
- Teak paneled bulkheads
- Carpeting
- Canvas rug runner
- Designer chair
- Designer sofa w/ rod storage
- Table, high-low, high gloss
- Bose Lifestyle 18 stereo w/ CD/DVD
- 30" LCD flat screen w/ remote
- Custom door selection
- Central vacuum system
- Zoned air conditioning w/ reverse cycle heating (4 a/c compressors)
- Headliner
- Wood blinds w/ upholstered panel
- Tinted safety glass
- Phone inlet w/ 50' cord and (1) jack
- 24V and 110V lighting
- European push button hardware

Galley/Dinette

- **New 52' Ocean Yachts Layout**
- **Sub zero drawer refrigeration**
- Convection/microwave oven
- Water tank level gauge
- Corian counters and sink
- Trash compactor
- Instant hot water faucet
- (2) Burner, 220V range glass top
- Refrigerator and freezer, undercounter drawer style
- Duplex electrical outlets
- Spacious drawers and cabinets
- Dinette w/ high gloss top and upholstered seating

Master Stateroom

- Large berth w/ drawer storage

- Carpeting
- Mattress w/ 5" foam and zippered cover
- Private head access
- (2) Bedspreads and shams
- (2) Pillows
- 24V and 110V fixtures and receptacles
- (2) Nightstands
- Headliner
- Drawers for clothes storage
- Overhead cabinets
- Vanity w/ mirror and stool
- Hanging locker, cedar lined
- AM/FM stereo w/ CD
- Stereo speakers
- Air conditioning/heat controls
- 20" LCD flatscreen w /remote / satellite tv
- DVD player
- Phone jack
- Teak raised panel entrance door
- Dimmer switches

Master and Guest Heads (3 Heads)

- Tile flooring
- Custom wall covering
- Corian countertop
- Stall showers w/ door, automatic sump pump and light
- Medicine cabinet w/ mirror
- Linen storage
- Towel bars
- Vacuflush heads
- Exhaust blower
- 24V and 120V lights
- Duplex outlets, 120V
- Ventilating hatch w/ cover (guest only)
- Teak raised panel entrance door

Guest/Crew Stateroom (3rd Stateroom)

- 20" LCD flatscreen w/ remote (guest only)
- DVD player (guest only)
- Over and under bunk (crew only)

- (2) Bedspreads and shams
- Carpeting
- Headliner
- Teak raised panel entrance door
- Hanging locker
- Decorative mirrors (guest only)
- Spacious drawers
- Dimmer switches
- Phone jack (guest only)
- Private head access (guest only)

Companionway

- Designer wall coverings
- Headliner
- Carpeting
- Washer and dryer
- Storage

Lighting System

- Navigation lights
- Cockpit courtesy lighting
- 24V and 110V fixtures/receptacles
- Overhead lights
- Reading bunk lights
- Closet lights
- Engine room lights
- Circuit breakers throughout
- Back lighting on electrical center panel and flybridge instruments
- Under gunnel lights

Fly Bridge

- **Air condition and heat**
- Molded fiberglass, fully instrumented w/ (1) fully adjustable helmsman and companion seat, safety rail, ladder and lockers
- Hardtop w/ 4 sided enclosure
- All wiring w/ circuit breakers for electronics
- Lounge seats, front and side, w/ pleated vinyl covered polyfoam cushions , rod storage and table

- Chart light
- Weatherproof duplex 120V electrical outlet
- Spreader lights
- (6) Rocket launchers, aft rail
- Bridge snap down carpet
- New Isenglass Panels

Electronics

- Garmin 7212 plotter (New 2013)
- Furuno radar
- Furuno FCU-1100L, color: Bottom Machine Sonar
- Sim Rad AP20 autopilot
- Clarion Marine/Sirius CD/FM
- Icom VHF IC-M504
- Northstar GPS plotter 951X
- Icom VHF IC-M502

Electrical System

- Westerbeke generator, 12.5 kw, fresh water cooled w/ sound shield, 649 total hours
- Heavy duty batteries, two banks w/ automatic battery charger
- Battery parallel system
- **Shoreline, 220V-50A w/ automatic cord reel**
- Dyna plate ground system electrical outlets, 120V duplex
- Electronic control and distribution panels w/ circuit breakers, volt meters and battery condition indicator
- Engine synchronizer
- Zoned air conditioning w/ reverse cycle heating, 220V
- (4) compressors, ac bridge
- Zinc anodes

Safety and Navigation

- Life raft in canister
- Anchor, 40 lb
- Anchor chain, 5' vinyl coated
- Anchor line, 300' x 9/16"
- Fog bell
- Electric air horns, deluxe
- (3) 2 ½ lb portable fire extinguishers, (1) 5 lb

- Fire and smoke detector
- First aid kit
- (6) Type 1 life jackets, (1) 20" ring buoy
- Olin flare kit
- Bow rail, aluminum
- Bridge rail w/ ladder, aluminum
- (2) VHF radio w/antennas
- Autohelm Tri-data System for speed, depth and water temperature
- Compass, flush mount
- Fuel shut off valves, quick action ball type
- Seacocks, quick action ball type, all through hull fittings below waterline
- (3) Automatic bilge pumps
- Hydraulic steering
- Hydraulic controls
- Fuel gauges
- Bonding throughout
- Engine alarm system for water temperature, oil pressure and high bilge water

Deck and Outfitting

- Bow pulpit, fiberglass
- Bow pennant staff
- Handrails, aluminum
- (6) 35' nylon docklines
- (2) stern cleats, (2) bow, (4) springline
- Hawse pipes
- Forward deck hatch
- (2) 28"x8 1/2" fenders
- Tinted safety glass
- First quality European teak solids and trim
- Canvas step pad
- Life raft capsule on bow deck

Cockpit

- Molded fiberglass, self bailing
- New Release rocket launchers prep table
- New Release cockpit table
- (6) Gunnel rod holders
- Cockpit side lockers
- Tackle locker
- Transom gate and hinged stern door

- Door to engine room
- Seawater and freshwater washdowns
- Bait center w/ freezer, sink and fresh water spigot
- Lazarette access
- Live baitwell in transom
- Hatch dunnage box
- Stereo speakers
- Boarding step box
- Insulated fishboxes w/ pumpout

Water System

- Hot water heater, 20 gallon/220V
- Pressure water system, 220V
- Shower sump pump, 24V automatic
- Faucets
- Central main drain aft eliminates most side through-hull fittings
- Toilet system, Vacuflush
- Dockside water connections and fresh water spigot
- Holding tank, 55 gallon

Optional Equipment Onboard Summer Breeze

Electrical

- Built in 15" LCD flatscreen tv w/ DVD in crew stateroom
- Extra 110V Duplex outlet, tv outlet, phone jack
- AM/FM stereo w/ CD (forward stateroom)

Deck and outfitting, cockpit

- Teak cover boards
- Teak coamings

Windlass

- Lewmar Concept II windlass
- Ideal V3c w/ chrome capstan

Flybridge

- Hatch in hardtop
- Refrigerator
- Aft enclosure

- **EZ2CY (clearview) 4 sided enclosure (in lieu of standard)**
- Air conditioning w/ R.C. heat
- Upper vents in enclosure

Fishing equipment

- (6) Rod holders, flush mount
- Rupp riggers w/ triple box spreaders, F.B release w/ 39' poles (pair)
- Rupp center rigger
- Refrigerated fish box

Interior

- Sofa bed w/ rod storage
- Amtico teak and holly flooring at salon entry
- Full clear salon cover w/ canvas runner
- Steps and companionway runner

Décor

- Designer interior
- Accessory package
- Cherry interior w/ satin finish

Additional Options

New Release custom Battle Wagon rocket launcher rigging table (2014)

New Release custom cocktail cockpit table (2014)

Garmin plotter (2013)

(2) Satellite tv receivers

Bridge air condition

Engine Room and Propulsion

- Twin MTU/Detroit Series 60 (825hp) diesels, 549 total hours
- Detroit low idle
- Detroit engine sync
- Fully sound and heat insulated engine room
- Awlgrip engine room
- Twin diesel fresh water cooled engines
- Racor fuel filters, main engines and generator

- Engine hour meters
- Alternators
- External sea strainers, large wedge type
- Automatic fire extinguisher system in engine room
- Engine room blowers
- (2) Propellers, Nibral
- Shafts, Aquamet 22
- Bronze rudders and struts w/ bearings
- Trim tabs
- Electric oil exchange system, engine and generator
- Heat recovery bottles, engine and generator
- Fuel tank crossover
- Electrical outlet
- Spare parts

Factory 52 Sport Test Results Table

Twin MTU Series 60 (825 BHP) Diesels

RPM	Speed (MPH)	Speed (Knots)	Fuel Use (Est.GPH)	Efficiency Range
1000	16.3	14.2	12	916
1500	23.9	20.6	34	474
1800	31.2	27.2	50	424
2100	37.1	32.2	66	367
2350	40.7	36.4	96	319

Исключения

При продаже яхты исключаются личные вещи владельца.

Отказ от ответственности

Компания предоставляет описание судна или яхты добросовестно, но не может гарантировать точность этой информации, а также не ручается за техническое состояние. Покупатель должен проинструктировать своих агентов или оценщиков исследовать представленную информацию более подробно, по собственному желанию.

Продажа судна или яхты, изменение цены или снятие с продажи будет происходить без предварительного уведомления.

ФОТОГРАФИИ

Open Area Salon



Spacious Gourmet Galley, New Updated Layout



Master Suite



Spacious Updated Flybridge



Salon, Adjustable Table



Spacious Salon



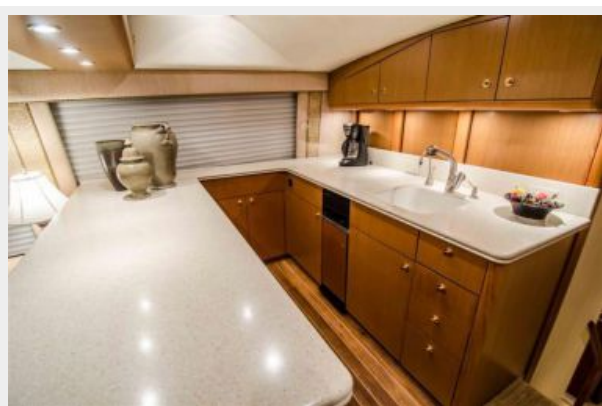
Salon Open Layout



Spacious Countertops



U Shaped Galley, Sub Zero Refrigeration Drawers



Large Dinette



Sub Zero Refrigeration Drawers



Galley



Satellite TV



Master Suite



Master Suite



Vanity in Master Suite



Master Suite Vanity



Vip Walk Around Berth



Excellent Storage VIP



Master Head



3 Heads



3 Head s



Third Stateroom



Third Stateroom



3 Heads



Separate Washer and Dryer



Cedar Lockers



Air Conditioned Flybridge Open Seating



Updated Helm



Bridge Seating



Spacious Bridge Seating



Enclosed Air Conditioned Bridge



Flybridge Night View



Flybridge Night View



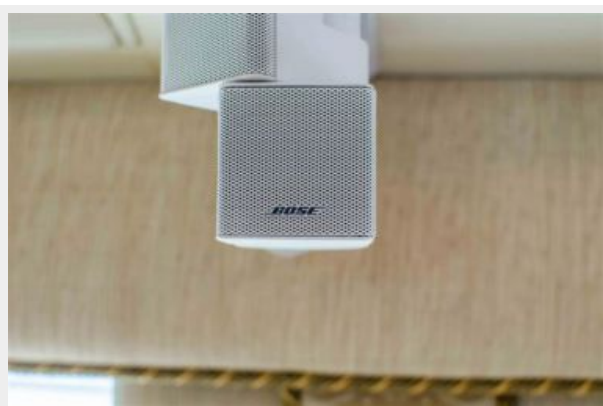
Garmin Updated Electronics



Bridge Seating



Bose Entertainment System



Ground Tackle and Windlass



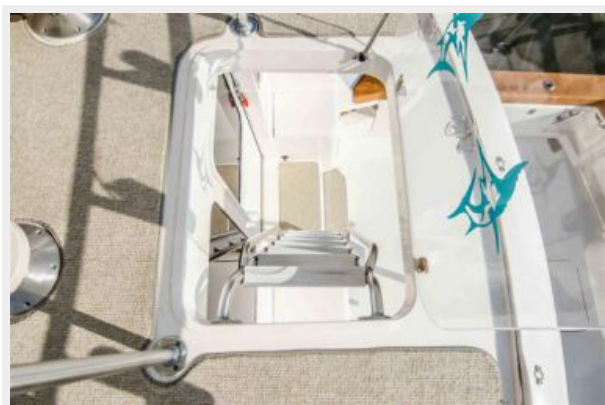
Auto Retrieve 50 amp Shore Power



Cockpit Bait Prep



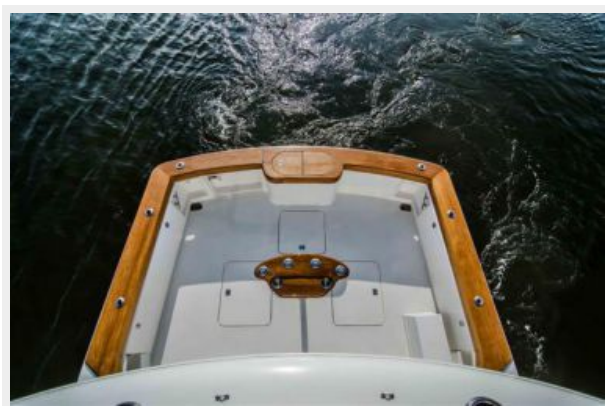
Bridge Access/Safety Glass Top



Cockpit/Release Rocket Launcher



Cockpit Live Well



Cockpit Release Table



Night Cockpit



Aft Night Photo



Sparkling Clean Engine Room



Engine Room Spotless Bilges



Port Engine Gear



Racor Fuel Filters



Westerbeke 12.5kw Generator with 632 Hours



Four Cruisair Compressors



Cruisair A/C



Easy Access Batteries



Reverso Auto Oil Change System



Sentry Battery Charger



Starboard Engine



Port Engine



Bridge 360 Degree Excellent Visibility



Profile



Profile



Profile



Profile



Profile



Stern



КОНТАКТЫ

Андрей Шестаков (Andrey Shestakov) – ведущий яхтенный брокер отдела продаж яхт и судов компании Shestakov Yacht Sales Inc. Официальный представитель Shestakov Yacht Sales Inc. для русскоговорящих клиентов в центральном офисе компании в Майами/Форт Лодердейл/Флорида/США.

Контактная информация

Email: andrey@shestakovyachtsales.com

Web: shestakovyachtsales.com

Телефоны

Краснодарский край: **+7(918)465-66-44**

США, Майами, Флорида: **+1(954)274-4435**

Время работы

Понедельник – Суббота: **9:00 - 21:00**
EDT

Воскресенье: **Закрито**

Адрес



Harbour Towne Marina, 850 NE 3rd St,
STE 213, Dania, FL 33004