

PEA POD — COASTAL CRAFT



Builder: COASTAL CRAFT

Year Built: 2013

Model: Cruiser

Price: PRICE ON APPLICATION

Location: United States

LOA: 48' 6" (14.78m)

Beam: 15' 3" (4.65m)

Max Draft: 3' 10" (1.17m)

Cruise Speed: 28 Kts. (32 MPH)

Max Speed: 32 Kts. (37 MPH)

Our experienced yacht broker, Andrey Shestakov, will help you choose and buy a yacht that best suits your needs Pea Pod — COASTAL CRAFT from our catalogue. Presently, at Shestakov Yacht Sales Inc., we have a wide variety of yachts available on our sale's list. We also work in close contact with all the big yacht manufacturers from all over the world.

If you would like to buy a yacht Pea Pod — COASTAL CRAFT or would like help answering any questions concerning purchasing, selling or chartering a yacht, please call +1(954)274-4435

TABLE OF CONTENTS

TABLE OF CONTENTS	2
SPECIFICATIONS	4
Overview	4
Basic Information	15
Dimensions	15
Speed, Capacities and Weight	15
Accommodations	16
Hull and Deck Information	16
Engine Information	16
PHOTOS	17
At the dock	17
Main Salon Fwd	17
Main Salon Aft	17
Galley	17
Salon Settee	18
Salon TV	18
Helm Seat	18
Port Seating	18
Helm	18
Electronics	18
Controls	19
Master TV	19
Master	19
Master Bath	19
Guest Cabin	19
Engine Room	19
Hydronic Furnace	20
8 Kw Inverter	20

Aft Deck	20
Fly Bridge	20
Batteries	20
Aft stbd Joy Stick	20
Fly Bridge stairs	21
Under way	21
CONTACTS	22
Contact details	22
Telephones	22
Office hours	22
Address	22

SPECIFICATIONS

Overview

Specifications

Two staterooms with two heads

Marine aluminum construction

Yacht finishing

High quality yacht construction

Constructed to ABYC yacht standards

Impressive performance & fuel economy

Lower maintenance and operating costs

Superior strength

Low sound levels

IPS Joystick offers ease of handling

Large swim step area

4 helm stations

Cockpit lounge seating

Fly bridge with seating

Excellent sight lines from lower helm

Spacious master stateroom

Large head with separate shower

Chef's galley

Yacht cherry interior finish work

E-Plex network switching & monitoring

Hydronic diesel heating

Garmin Radar/Plotter/Sounder

Garmin Autopilot

Automatic fire suppression system

Bose® entertainment center

Window blinds

Alexseal® paint system

Antifouling paint

Lithium “Hybrid” 24V Electrical System

Humphree Vessel Trim System

Construction

Marine aluminum construction

5/16” 5086-H116 bottom plates

1/4” 5086-H116 transom & chines

3/16” 5086-H116 side plates

5/32” & 3/16” 5052-H32 decks

5/32” cabin and fly bridge

1/2” X 6” keel bar

5/16” & 3/8” longitudinal/transverse framing

Welding- Pulse Mig Tech

Sounddown® hull, deck and cabin insulation

Alexseal® complete fairing & paint system

Deck Hardware

Fittings all in 316 stainless steel

3” D-Rubber fender rail around swim step

9 deck cleats polished aluminum (welded)

55 lb Delta® anchor (stainless steel)

Anchor windless (3 station remote)

200' chain & 300' X 5/8" rope (marked)

Pulpit with anchor roller assembly

Safety glass (Tempered) windshield

Side windows (4 sliding, 2 non-opening) (tinted)

Rear windows (2 sliding, 1 non-opening) (tinted)

Hinged rear door with full height window (tinted)

"Lewmar" deck hatches (2-20", 2-12") in foredeck

Non-slip deck coatings on side and foredeck

Aft cockpit

Cockpit hardtop cover with Imtra LED ceiling lights

Volvo Joystick Controls (Port and Starboard locations)

Self-bailing cockpit with deck scupper drains

Cockpit steps from cockpit deck up to side decks

Handheld fire extinguisher

Hinged transom door

Engine room access hatch

Stainless steel grab rails (1.25") rear cabin

42" swim platform (integral hull design)

Boarding ladder (under swim step mounted)

(4) Imtra Vixen LED courtesy lights

Two Paradigm® waterproof speakers

Hot/Cold shower

Fresh & raw water wash down

Fly bridge

SS staircase with sliding overhead deck hatch

Deck drains

Non-slip deck coatings

Lexan (tinted) windscreen/visor

3 helm seats with armrests & covers

Stainless steel rails (1.25")

Upper helm console with cover

Tilt steering

Edson® Steering wheel

Electronic engine and transmission controls

Volvo® EVC panel

Volvo® engine management panel (7" color)

Volvo Joystick Control

Contoured switching panel

Humphree Vessel Trim Controls

Ritchie® D55 Compass

(1) Garmin 8215 (15") touch screen display

Garmin GHS 10 VHF Remote - wired

Garmin GHC 10 Autopilot controls

Stainless steel drink holders (3)

Two Paradigm® waterproof speakers

Imtra Vixen LED courtesy lights

12V power point

Sunbrella Canvas covers on seating and table

Salon

Interior cabinets and panels are finished in cherry

Teak & Holly flooring

Cherry wall panels and wood window returns

“Jackson” window blinds mounted in valances

Soft Touch ceiling panels with foam backing

Double-wide helm seat with armrests (Joystick mount)

(storage cabinet with drawers in helm seat cabinet)

Port side doublewide passenger seating (forward)

Port side “U” shaped Settee (seating for 6)

“Ultra Leather” upholstery in Salon

Starboard galley (L Shaped)

Bose® V35 Lifestyle entertainment system

Pioneer Blu-Ray player

(5) Bose cube interior speakers with sub

Imtra Vixen LED courtesy lights

(16) Imtra Ventura LED ceiling lights on dimmer

(2) Imtra reading lights

Storage compartment under salon floor

32” LCD TV in recessed ceiling cabinet

Galley

Galley includes lower cabinets “L” shaped

Pantry with locker in helm seat bulkhead

Drawers and cupboards

Brushed stainless steel flush latches (locking)

Avonite® countertops and back splash

Seward® cook top stove (3 burner)

Galley hood/extraction fan

Built in Panasonic® convection microwave

Stainless steel (double) under mount galley sink

Grohe® Galley faucet (single lever)

Hot and cold water

Seagull® Water purifier

Built-In Freezer (5.0 cu/ft) cabinet

(2) AC outlets

Handheld fire extinguisher

Teak & Holly flooring

Soft Touch ceiling panels with foam backing

Imtra Vixen LED courtesy lights

Forward Head

Vanity includes lower and upper cabinet

Vanity drawers and mirrored upper cabinet doors

Avonite® or Corian® countertop and backsplash

Stainless steel under mounted vanity sink

Vanity faucet and soap dispenser

Electric toilet (full size)

Fresh water flush toilet

AC outlet

Towel bar

Teak & Holly flooring

(2) Imtra Ventura LED ceiling lights, (2) vanity lights

Overhead deck hatch with screen

Forward Shower

Watertight shower stall with seat

Teak seat grating (removable)

Teak floor grating (removable)

Wall mounted mixing valves and shower head

Towel (dry) locker

Towel bar

Shower sump discharge pump

(2) Imtra Ventura LED ceiling lights

Overhead deck hatch with screen

Master Stateroom

Teak & Holly flooring

Island berth (66" X 78") with 8" mattress

Step platforms on either side of berth for easy access

Port full height locker with shelves

Starboard full height hanging locker

(4) Drawers under foot of berth

Upper side cabinets/lockers

Hull sides lined with cherry planking (2 1/4")

19" Toshiba® LCD TV/DVD (flip down)

(2) 20" deck hatches with Oceanair screen/shade

Soft Touch ceiling panels with foam backing

(8) Imtra Ventura LED ceiling lights on dimmer

(2) Imtra reading lights

Imtra Vixen LED courtesy lights

Guest/Aft Stateroom

Teak & Holly flooring

Twin bunks convert to 66" wide berth

Locker with storage

Bookshelf with locker doors

Stateroom finished in Cherry

19" Toshiba® LCD TV/DVD (wall mounted)

Soft Touch ceiling panels with foam backing

Imtra Hatteras LED ceiling lights

Imtra Vixen LED courtesy lights

Imtra reading lights

Main helm console

Volvo tilt steering

Edson® wood trimmed steering wheel

Electronic engine controls

Volvo® EVC panel

Volvo® engine management panel (7" color)

Volvo Joystick control (helm seat armrest)

Contoured switching panel

Humphree Vessel Trim Controls

Ritchie® Navigator Compass

(2) Garmin® 8215 touch screen

Garmin® GHS10, wired VHF remote

Garmin® GHC10 Autopilot Control

12V power point

Navigation electronics

(3) Garmin® 8215 touch screen

1 Garmin 8212 touch screen at co-pilot seat

Radar/GPS plotter/Sounder

Garmin® GMR24 24" HD Radar

Garmin® GSD 24 Sounder Module

Airmar® thru hull transducer (200kHz)

Airmar® thru hull transducer (50kHz)

Garmin® GHC10 autopilot

(2) Garmin GHC 10 control panels and (1) remote

Garmin® 300 VHF radio with Morad® antenna

(2) Garmin® GHS 10 VHF Remotes (wired)

Garmin® AIS600 Transceiver

Garmin® GXM 51 XM Weather

Machinery & systems

Northern Light® 6KW generator with sound shield

Centek® waterlift & water/gas separator mufflers

US Water Maker Clearwater 400 GPD water maker

Aluminum fuel tank with (2) senders

Stainless steel water tank with pressure sender

Sealand waste tank with electric sender Racor® FG900 (dual) fuel/water filters

Manual Whale bilge pump

(2) Z4A hull zinc anodes

Sounddown® engine room insulation

Air intake and ambient air venting and ducting

Propulsion

Two Volvo® IPS600 (D6-435 diesel engines)

(2) Volvo engine management panels (7" color)

3 Station Volvo Joystick control

Engine spare parts kit

Electrical equipment

(2) Corvus Lithium Battery Cell (24V @ 600 AH)

(2) Northstar® Energy One AGM (24V engine start)

E-Plex network switching & monitoring

Eplex/Watch Dog Onboard Security

Eplex/Watch Dog PC Navigation

Victron Quatro (8KW inverter, 200 Amp Charger)

Victron Skylla Charger (100 amp, House bank)

Victron Multiplus Charger (Start bank)

Charles® galvanic transformer

Battery coupling system

Water heater (AC & hydronic heating)

3 X windshield wipers with SS arms and blades

Windshield washer system

Electric air horn

Remote searchlight

Navigation lights (LED)

Humphree HA500MM Vessel Trim System

Bilge pumps (5 X 2000 gph, auto/man)

High water bilge alarms

High temperature alarms in engine room

Fire suppression system (auto/man) in engine room

Domestic water pump

Sirius satellite radio (wired into Bose®)

Imtra LED recessed ceiling lights on dimmers

Florescent lights in storage compartment under salon

Beam® built-in vacuum system

Defrost system

Warranty

Structural – 10 year limited

Deck hardware – 2 year limited

Paint – 2 year limited

Joinery – 2 year limited

Upholstery – 2 year limited

Machinery – 2 year limited

Electrical – 2 year limited

All warranties are transferable

Options

Steelhead WD800 Davit Crane

Add additional cockpit Volvo Joystick

Intellian I3 HD Satellite Receiver

Intellian I3 Dummy Dome (antennas)

Kabola® hydronic heating system

Volvo Dynamic Positioning System

Volvo Slow Speed Trolling Feature

Swim Platform Staple Rails (2 hoops)

Glendinning Cablemaster

Curved Radar Arch in lieu of Tower

Cockpit Canvas Enclosure

Upgrade enclosure to Rainer glass

(2) adjustable shelves to aft locker.

7/8" Lifeline rail to Bow rail

Gun storage locker in new cabinet in main salon.

Cockpit Locker with door.

Transom cabinet. (2) lockers

120V receptacle in transom cabinet.

(8) SS pad eyes to forward side of transom cabinet.

Two flybridge storage cabinets

(4) SS pad eyes in master stateroom

Volvo Automatic Corrosion Protection (ACP)

Basic Information

Category: Cruiser

Model Year: 2013

Year Built: 2013

Country: United States

Fly Bridge: Yes

Cockpit: Yes

Dimensions

LOA: 48' 6" (14.78m)

LWL: 40' 4" (12.29m)

Beam: 15' 3" (4.65m)

Max Draft: 3' 10" (1.17m)

Clearance: 19' 6" (5.94m)

Speed, Capacities and Weight

Cruise Speed: 28 Kts. (32 MPH)

Cruise Speed RPM: 3000 Kts.

Max Speed: 32 Kts. (37 MPH)

Max Speed RPM: 3200 Kts.

Displacement: 35 Pounds

Water Capacity: 100 Gallons

Fuel Capacity: 470 Gallons

Accommodations

Total Cabins: 2

Total Berths: 3

Sleeps: 4

Total Heads: 1

Hull and Deck Information

Hull Material: Aluminum

Engine Information

Engines: 2

Manufacturer: Volvo

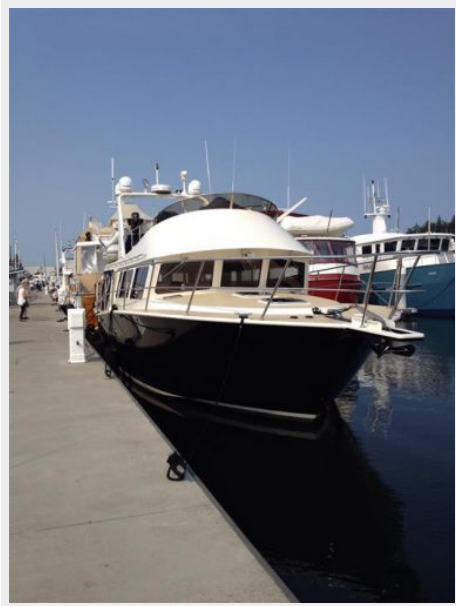
Model: 600 IPS

Engine Type: Inboard

Fuel Type: Diesel

PHOTOS

At the dock



Main Salon Fwd



Main Salon Aft



Galley



Salon Settee



Salon TV



Helm Seat



Port Seating



Helm



Electronics



Controls



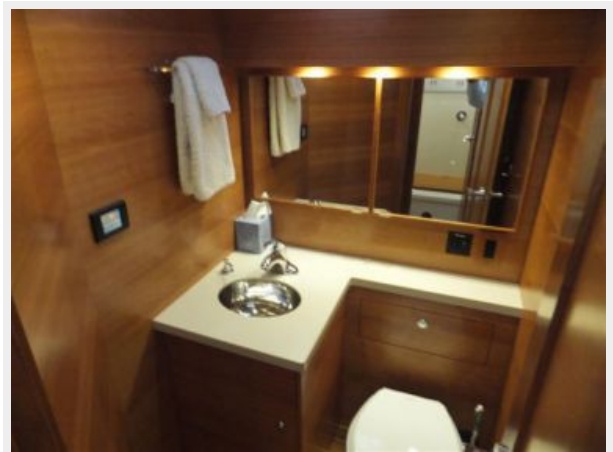
Master TV



Master



Master Bath



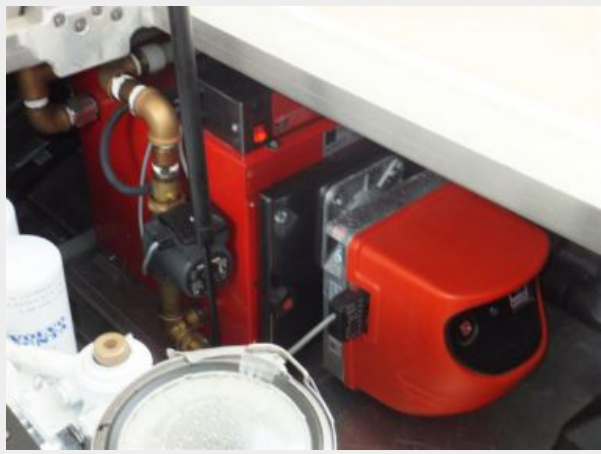
Guest Cabin



Engine Room



Hydronic Furnace



8 Kw Inverter



Aft Deck



Fly Bridge



Batteries



Aft stbd Joy Stick



Fly Bridge stairs



Under way



CONTACTS

Andrey Shestakov, leading yacht broker of the sales department of Shestakov Yacht Sales Inc. Shestakov Yacht Sales Inc., the official representative of the Miami/Fort Lauderdale FL headquarters.

Contact details

Email: andrey@shestakovyachtsales.com

Web: shestakovyachtsales.com/en/

Telephones

USA: +1(954)274-4435

Office hours

Monday – Saturday: **9:00 - 21:00** EDT

Sunday: **closed**

Address



Harbour Towne Marina, 850 NE 3rd St,
STE 213, Dania, FL 33004