

HANSE — HANSE



Судостроитель: HANSE

Год постройки: 2007

Модель: Крейсерская яхта

Цена: **ЦЕНА ЯХТЫ ПО ЗАПРОСУ**

Местонахождение: Spain

Длина общая: 62' 4" (19.00m)

Мин. осадка: 9' 7" (2.92m)

Купить Hanse — HANSE а также выбрать подходящую вам яхту из нашего каталога яхт вам поможет опытный яхтенный брокер Андрей Шестаков. На сегодняшний день компания Shestakov Yacht Sales Inc. имеет большое количество яхт в собственном списке продаж, а также тесно сотрудничает со всеми крупными яхтенными производителями по всему миру.

Для того чтобы купить яхту Hanse — HANSE а также проконсультироваться по любому вопросу связанному с покупкой, продажей, чартером яхт позвоните по телефону **+7(918)465-66-44**.

ОГЛАВЛЕНИЕ

ОГЛАВЛЕНИЕ	2
ХАРАКТЕРИСТИКИ	3
Обзор	3
Основная информация	3
Размеры	3
Скорость, вместимость и масса	4
Размещение	4
Корпус и палуба	4
Информация о двигателе	4
ПОДРОБНОЕ ОПИСАНИЕ	5
GENERAL	5
Исключения	7
Отказ от ответственности	7
ФОТОГРАФИИ	9
КОНТАКТЫ	12
Контактная информация	12
Телефоны	12
Время работы	12
Адрес	12

ХАРАКТЕРИСТИКИ

Обзор

This particular yacht was one of the few Lifting Keel 630 models produced. Built for her first owner, she was named AMUR, but very soon he decided that the best thing when boating and sailing is to stick to the time served principle of 'KIS' (Keep it simple!).

Having touched the keel on the ground and damaged the lifting keel mechanism he wanted a fixed keel version. She was taken back to the factory, the lifting keel removed, topsides painted white, and the interior underwent a full factory refit and standard fixed keel fitted.

The yacht was approx 2 years not in use until 2013 when she was refurbished and sailed to England. She remained unused again for a year before being sailed to Palma to be sold.

So she had light sailing use and presents very well for the year. Many parts are almost new (cooker, microwave, deck canvas, sails, etc).

HANSE is a simple, fail safe, stiff and seamanlike fast cruising yacht.

The present owner has sailed and enjoyed her, but is selling to undertake new projects.

The yacht has been delivered to Mallorca to be sold.

Основная информация

Тип судна: Крейсерская яхта

Модельный год: 2007

Год постройки: 2007

Страна: Spain

Размеры

Длина общая: 62' 4" (19.00m)

Длина по ватерлинии: 56' 1" (17.09m)

Мин. осадка: 9' 7" (2.92m)

Скорость, вместимость и масса

Водоизмещение: 52910.94288 Pounds **Вместимость воды:** 184.9204364 Gallons

Объем топливного бака: 192.84559796
Gallons

Размещение

Всего кают: 3

Всего коек: 3

Спальные места: 6

Всего ком. состава: 3

Каюты экипажа: 1

Койки экипажа: 1

Спальных мест экипажа: 1

Корпус и палуба

Материал корпуса: Fiberglass

Материал палубы: Teak and Fiberglass

Отделка корпуса: Stainless Steel

Дизайнер корпуса: Jüdel & Vrolijk

Информация о двигателе

Двигатели: 1

Производитель: Volvo

Модель: D3-1101-C 112Kw

Тип двигателя: Inboard

Тип топлива: Diesel

ПОДРОБНОЕ ОПИСАНИЕ

GENERAL

Hull and Deck construction

White painted hull (painted 2013). Built with prepreg fibreglass fabrics in epoxy, vacuum cured with Corecell™ foam, postcured. Carbon fibre chain plates. Epoxy E-glass strong back with UD reinforcements. Waterline and cove line stripes in black are laid in the gelcoat. Opening transom hydraulic, with remote control - dinghy storage in the aft compartment. Electrical hydraulic gangway with remote control, retractable into transom. Hull windows and overhead hatches are upgraded to glass (from standard Perspex). Keel Standard composite iron / lead keel, T-shaped. Performance draft: 2.95 m / 9.67 ft. Stainless steel keel bolts. Deck Two black carbon steering wheels. Deck prepreg fibreglass fabricated in epoxy, vacuum cured with Corecell™ foam, postcured. Thermal and sound insulated. Carbon fibre reinforcements. Deck areas are white. Deck Equipment Teak on side decks, on cockpit seats and cockpit floor, also on the coach roof. Self-draining anchor locker with electrical windlass (1600 kg drag) recessed in locker at bow, with a hand held remote control unit. Flush retractable anchor davit with anchor roller and spring lifting assistance for storage inside the locker. Large foredeck sail storage locker with V shape units.. Self-draining cockpit. Engine control at helm station starboard side. Storage for gas bottle. Self-tacking jib track, fully integrated in the foredeck. 2 x 6 sheave deck organizers. 12 deck jammers. Padeyes for gennaker. Opening portholes in cockpit. 10 flush portholes in hull. Stainless steel pushpit with ensign shaft socket. Split pulpit with navigation lights. Stainless steel stanchions tapered. Opening side gates on both sides. 6 retractable mooring cleats. Winches in cockpit, 2 primary winches 65 AEST (24V), 2 secondary winches 54 ST electric.

Engine and Mechanical

Volvo Penta D3-110, 81 KW / 110 HP common rail, diesel engine. Stainless steel propeller shaft. 3-bladed folding propeller. Hours approx 1270 as at August 2014. Engine systems: 1 alternator 12 V / 80 Amp. 1 alternator 24 V / 75 Amp. 2 x stainless steel fuel tanks, each of approx. 365 litres (730 litres total) Fuel infill on deck. Fuel filter / Water separator. Engine room sound insulated and illuminated. Engine room with storage for generator above engine.

Interior and Accommodations

High quality marine plywood, mahogany veneer, satin varnish. White bulkheads. Wooden door frames. Wood / Sandwich doors. Maple style wood floor squares in the saloon, gives access to hull and under floor areas. Upholstery in Special white cord. "Teak decking" type floor to head and shower areas. The interior of HANSE appears in excellent condition and belies her age. Forward cabin Owner cabin with double berth set to starboard. Sofa seating on port side and generous hanging lockers and drawer stowage. Forward of the cabin is the ensuite wash-room area with an electric head and shower unit. Sharp TV on forward bulkhead of the cabin (in front of the bed). Main Saloon Each side of the saloon are 3 hull windows giving great views and flooding the cabin with light. Spacious saloon with dining area to starboard, including 2 stools on

centre-line. A 26"TV is recessed outboard of the sofa and rises electrically for viewing. To port is a comfortable settee. On the port side aft of the sofa is the Navigation station. Navigation area Seat with storage. Locker above chart table for instruments and books. Space to mount electronics. 110 V / 230 V / 12 V / 24 V outlet. Storage in the chart table. Chart light. Crew / Single cabin (utility room) There is a multipurpose cabin portside aft of navigation area & main saloon – here is a single bed, stowage, a manual marine toilet and the washing machine. Aft of the dining area is the open plan "American galley" with a "breakfast bar" and two stools inboard. The galley is well equipped and has generous stowage and a fridge and a freezer. Galley – U shaped Solid surface, Corean™ black quartz with integrated double sink. 3-burner Technipex LPG stove with oven, gimballed (new 2013). Gas system and self draining LPG bottle storage in anchor locker. Miele microwave, new 2014. Extra large fridge of approx 130 l, top and front loader with light Freezer, front loader, capacity approx. 80l Lockers and drawers Large bin with three removable sections for separation of waste Soba clothes washing – in crew cabin area). Aft cabins 2 double aft cabins, each with double berth, several lockers and an ensuite wash-room (which has Corian solid surface black quartz with stand alone wash-basin; electric head, shower and stowage).

Main Systems

Bow thruster: Maxpower VIP 150, retractable type, 24V (new 2013). Air conditioning: 4 units, 9000 BTU each, 220v. Generator: sound isolated 10,2 kW Mastervolt.

(Show to: **Public**) Electrical Systems

12V / 24 V and 110 V / 230 V systems. 24 V DC and 230 V, 50 Hz AC. 12V DC for engine start. Main battery switches. Engine battery 12 V / 80 Ah. Service battery bank: AGM type – 8 x 12v batteries giving 24 V (660 Ah), new 2013. Isolator switch Inverter 3000W with battery charger 24 V / 100 Amp. Battery charger 24 V / 100 Amp. Battery charger 12 V / 20 Amp. (starter battery) Shore-power: 2 x 230 V supplies, protected with differential breaker and distribution system. Electric switch panel 230 V: 2 differential breakers. Control gauges. Voltmeter. Electric switch panel 12 V and 24 V: Switches for all onboard electrics. Voltmeter and battery control. Water / fuel gauges. 24 V Electric equipment: Electrical anchor windlass; 4 electrical winches; Pumps; 24 V Electric equipment: Navigation lights; Interior lights; Night light at saloon. Refrigerator box, 130 litre in galley; Freezer frontloading; Outlets 230 V: (at chart table; in fwd. cabin; in aft cabin; in galley; in saloon; in heads.) Interior lighting: Overhead lighting in cabins, saloon, galley and heads; Lighting in engine compartment; Reading lights in saloon and cabins; Indirect lightning in saloon; Storage room aft. Navigation lights (all navigation lights LED); Anchor light at masthead; Under-water lights (4x);

Plumbing Systems

Water maker: Dessalator 60 unit, dual voltage, approx 30 litres per hour. 2 x fresh water tanks in stainless steel, each approx 350 litres (700 total). 40 litre water heater, running from engine and / or 230V immersion heater Bilge pumps: 1 manual bilge pump 1 electric bilge pump with hose for compartments Toilet / Head Holding tank with sea and deck discharge for each toilet 3 x electrical Tecma toilet with fresh water flushing and holding tank (each head). Electrical deck

wash pump (sea-water) inside anchor locker.

Navigation and Mechanical Systems

2 x Plastimo compasses (one at each pedestal). Speedometer and depth sounder on a combi display at each helm . Simrad navigation package with wind and speed instruments, VHF, plotter, GPS and autopilot. Radar Simrad radom DX45 on spreaders at mast. At chart table: Simrad OP40 control; Simrad DI 10 screen; Simrad hand held autopilot control unit; Simrad RS87 VHF; Icom hand held VHF. Epson XP405 printer. At port helm: Simrad RS87 VHF; Simrad IS20 MFD; Simrad IS20 wind VMG unit; Simrad Ai50 unit; Simrad Di 10 screen; At starboard helm: Simrad OP40 control unit; Simrad AP24 control; MaxPower thruster control Berenzoni gangway control panel.

Sails and Rigging

RIG

3 spreader white painted aluminium mast, tapered - spreader lights on each spreader King white carbon boom. Cockpit light integrated in boom. Standing rigging of s/s rod discontinuous type. Running backstays Vectran. High end electric jib furler, below deck for maximum luff length. Main halyard; Jib halyard; Gennaker halyard; Topping lift (for main); Main sheet; Jib sheet. Navtec hydraulic boom vang and backstay adjusters with control panel by port helm. Mainsail drop system with Lazy Jack and a light beige bag / cover. Split backstay. Gennaker Pack incl. 2 sheets, 2 blocks, halyard. **SAILS** Mainsail and Self tacking Jib – both in good order, by Halsey UK, Tapedrive and from 2010 (but have had minimal sailing time) Gennaker, new 2014. Sail Area I : 84.42 ft J : 22.83 ft P : 84.75 ft E : 27.42 ft Working Sail Area : 2310.00 sq f

Accessories

Mooring kit, lines, fenders, anchor, chain 60 m. Two stainless steel framed cockpit tables with folding teak leaves. Halyard storage bags in the cockpit. Opening port-lights in cockpit. Stainless steel swim ladder. Hot & cold shower on aft deck. Cockpit speakers. Sprayhood. Bimini and frame for helm and for cockpit.. Wheel / Pedestal covers. Liferaft Man overboard rescue sling.

Исключения

При продаже яхты исключаются личные вещи владельца.

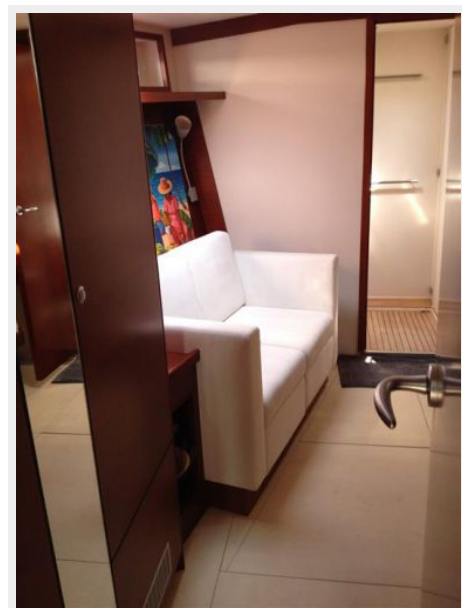
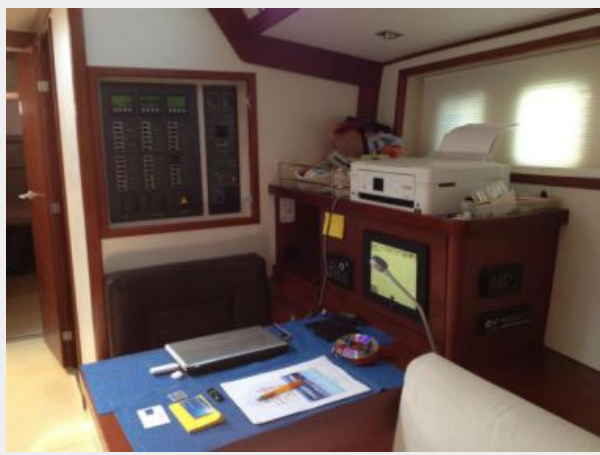
Отказ от ответственности

Компания предоставляет описание судна или яхты добросовестно, но не может гарантировать точность этой информации, а также не ручается за техническое состояние. Покупатель должен проинструктировать своих агентов или оценщиков исследовать представленную информацию более подробно, по собственному желанию.

Продажа судна или яхты, изменение цены или снятие с продажи будет происходить без предварительного уведомления.

ФОТОГРАФИИ







КОНТАКТЫ

Андрей Шестаков (Andrey Shestakov) – ведущий яхтенный брокер отдела продаж яхт и судов компании Shestakov Yacht Sales Inc. Официальный представитель Shestakov Yacht Sales Inc. для русскоговорящих клиентов в центральном офисе компании в Майами/Форт Лодердейл/Флорида/США.

Контактная информация

Email: andrey@shestakovyachtsales.com

Web: shestakovyachtsales.com

Телефоны

Краснодарский край: **+7(918)465-66-44**

США, Майами, Флорида: **+1(954)274-4435**

Время работы

Понедельник – Суббота: **9:00 - 21:00**
EDT

Воскресенье: **Закрето**

Адрес



Harbour Towne Marina, 850 NE 3rd St,
STE 213, Dania, FL 33004