

ANKLE DEEP — LAGOON



Builder: LAGOON

Year Built: 1994

Model: Catamaran

Price: PRICE ON APPLICATION

Location: United States

LOA: 42' 0" (12.80m)

Beam: 22' 8" (6.91m)

Min Draft: 2' 6" (0.76m)

Max Draft: 7' 0" (2.13m)

Our experienced yacht broker, Andrey Shestakov, will help you choose and buy a yacht that best suits your needs **Ankle Deep — LAGOON** from our catalogue. Presently, at Shestakov Yacht Sales Inc., we have a wide variety of yachts available on our sale's list. We also work in close contact with all the big yacht manufacturers from all over the world.

If you would like to buy a yacht **Ankle Deep — LAGOON** or would like help answering any questions concerning purchasing, selling or chartering a yacht, please call **+1(954)274-4435**

TABLE OF CONTENTS

TABLE OF CONTENTS	2
SPECIFICATIONS	3
Overview	3
Basic Information	8
Dimensions	8
Speed, Capacities and Weight	8
Accommodations	8
Hull and Deck Information	8
Engine Information	9
PHOTOS	10
CONTACTS	15
Contact details	15
Telephones	15
Office hours	15
Address	15

SPECIFICATIONS

Overview

Ankle Deep is a 42' Lagoon that is both fast and equipped for extended Islands and blue water cruising. She was originally commissioned as a four stateroom charter version which suffered damage during Hurricane Floyd in 1999. Subsequently she was purchased by the current owner, a retired sailmaker, and totally renovated for his use. Current configuration is more similar to an owners version. Ankle Deep just completed a three month cruise to the Bahamas and she is ready for new owners.

Note both engines have been replaced and recently (2013) rebuilt. Other new items include all new electrical systems and electronics, new mast, boom and sails, new bottom paint and above the water line all new paint including new non skid (2013) new bottom paint (2014). All new standing and running rigging. The owner also added, during refit, custom dagger boards to allow her to sail a true course with improved performance up wind. All of the heavy lifting has been completed for this vessel. Some interior finishes remain for completion by the new owners. Lots of space for additional equipment and options

Don't miss this opportunity to own a fast catamaran for under \$200K! Boat Name Ankle Deep Specs Builder: Tillitson Pearson Industries, RI Designer: M. Van Pethegem - V. Lauriot-Prevost Flag of Registry: United States Keel: Other Hull Shape: Catamaran Dimensions LOA: 42 ft 0 in Beam: 22 ft 8 in LWL: 38 ft 9 in Length on Deck: 42 ft 0 in Minimum Draft: 2 ft 6 in Maximum Draft: 7 ft 0 in Displacement: 16550 lbs Bridge Clearance: 70 ft 0 in Headroom: 6 ft 3 in Freeboard: 4 ft 0 in Dry Weight: 16550 lbs Engines Engine 1: Engine Brand: Yanmar Year Built: 1994 Engine Model: 3GM30 Engine Type: Inboard Engine/Fuel Type: Diesel Location: Starboard Engine Hours: 500 Propeller: Folding propeller Drive Type: Direct Drive Engine Power: 24 HP Engine 2: Engine Brand: Yanmar Year Built: 1994 Engine Model: 3GM30 Engine Type: Inboard Engine/Fuel Type: Diesel Location: Port Engine Hours: 500 Propeller: Folding propeller Drive Type: Direct Drive Engine Power: 24 HP Tanks Fresh Water Tanks: 2 Plastic (65 Gallons) Fuel Tanks: 1 Aluminum (80 Gallons) Holding Tanks: 1 Plastic (20 Gallons) Accommodations Number of double berths: 3 Number of cabins: 4 Number of heads: 1 Seating Capacity: 8 Electronics Wind speed and direction - Nexus TV set Compass Depthsounder VHF - ICOM 75 Autopilot - Raymarine ST5000 Plus GPS Log-speedometer CD player Plotter Sails Gennaker/Cruising spinnaker Spinnaker Storm jib Furling genoa Fully battened mainsail Rigging Spinnaker pole Steering wheel Electric winch Inside Equipment Manual bilge pump Electric bilge pump Chemical head - Raritan Electro Scan Deep freezer - Sea Frost Oven - Propane Force 10 Battery charger - Freedom 1000 Charger/Inverter Refrigerator - Sea Frost Hot water Electrical Equipment Shore power inlet - 30 amp. w 50' cord Inverter - Freedom 1000 Charger/Inverter Electrical Circuit: 110V Outside Equipment/Extras Swimming ladder Cockpit table Davits Cockpit shower - Hand held Electric windlass Covers Spray hood Bimini Top Mainsail cover

Manufacturer Provided Description

The Lagoon 42 is the result of an association between two of the world's leading sailboat builders, Jeanneau and Tillotson Pearson. The Lagoon is a craft which combines an excellent layout with a capability of sailing very fast. She utilizes glass cloths, vinylester resins, balsa cored construction and leading molding techniques that have been perfected over more than five decades of combined manufacturing experience. This boat has two aft sleeping cabins, one forward sleeping cabin and interior contemporary design.

Vessel Walk Through

Upon stepping aboard Ankle Deep you immediately notice the newly painted hull and decks and the new non skid areas. Moving forward on deck to Port you will find the sail locker at the bow hull, new trampoline. Forward of the main cabin on deck are two large storage lockers below deck for the windlass - rode & line, propane tank, outboard engine storage, deck lines, and fenders.

Aft is an uncluttered cockpit and helm area with comfortable seating for eight or more. Headroom under the Bimini top is exceptional. There are two seating storage compartments for storage. The dingy davits are positioned between the two sets of molded stern steps leading down to the water line.

The interior cabin featured a centered salon settee with surround seating. Five fixed panel cabin lights wrap above the settee. On the port hull at the center is the galley with a large pantry storage area forward and a sleeping cabin aft. On starboard hull center is a passageway with the head on the outboard side and the electrical systems wall mounted for easy access. Forward and aft on starboard are two sleeping cabins.

There are eleven operable deck hatches.

Galley

The galley refrigeration is a 12v Sea Frost Fridge cold plate and a Sea Frost engine driven compressor for the freezer.

Double stainless steel sink with pressure hot and cold water.

Force 10 three burner propane stove with oven.

Electrical & Mechanical

All new electrical wiring throughout with a new breaker panel.

Two battery switches are located conveniently next to the breaker panel.

Xandrex Controller

Freedom 1000 Charger-Inverter is also next to the breaker panel. This is a multi level smart charger.

Four (2014) Trojan 6v golf cart batteries ganged in two banks and each located in the engine compartments. Totals 435 amp/hrs.

Both engines have upgraded 85 amp. alternators for battery bank recharging.

30 amp. shore power cord, 50'.

Sea Frost refrigerator and Sea Frost freezer. The compressor is engine driven on one of the Yanmar's.

New (2014) Kuna water heater 6 gals. Hot and cold water at the galley sink and in the head.

Hot and cold hand held shower at the stern.

In the port aft mechanical locker is an old generator, currently inoperable, that may be able to be rebuilt.

Electronics

Raymarine Autopilot ST5000 Plus

Nexus Multi Control Log, Depth Sounder/Speed, wind.

Garmin 320S GPS/Map

Icom 75 VHF**6" Ritchie Compass****406 EPIRB**

Sony MP3 WMA system with two cockpit speakers.

Engines

Two Yanmar 3GM30 Diesel Engines recently rebuilt (2013) and less than 500 hours. No hour meters.

Engine controls at the helm are two Morse single lever controls.

Shafts are direct drive with Flex-O-Fold bronze props. (No Sail Drives)

Port engine powers the freezer compressor.

Deck

There are four anchors aboard, Delta 44, Bruce 33, Fortress FX16 and a CQR 44.

150 lf of 3/8" chain and another 150' of misc. chain available on board.

500 lf of rode.

The windlass is a Lofrans Seatiger

There are eleven operable deck hatches for natural ventilation and sun light.

Sails & Rigging

New mast, boom, standing and running rigging.

Main sail is fully batten Carbon Fiber FX23 with two deep reefs. Taffeta cover both sides. made for cruising on expensive large vessels, over kill but will last a long time. Eight battens, five full and three partial. The battens are tapered RBS with tension adjusters. SF

area just under 700.

Rolling furling self tacking jib. Tri-radial, Mylar with taffeta cover both sides and sun cover on the leech and foot. SF area is 260

Storm Jib is cross cut Dacron and hanks on to inner forestay. Used once SF area is 175.

Reacher/Drifter is tri-radical, Mylar fabric with taffeta one side. Sheets to the toe rail, SF area is 525.

Old Reacher is of Kevlar/Mylar tri-radical material in good condition. Approximately 525 SF area.

Cruising Spinnaker is 1.5Oz. nylon, all radial. It is a white field color with a navy lightning bolt in the luff. SF area is app. 1,350 with a ATN type sleeve for launch and retrieval. Easy to fly.

All sails are in excellent condition.

Winches include two Lemar 48 self tailing single speed at the cockpit. At the mast are two Lemar 42 two speed and one Lemar 30.

As part of the recommissioning of Ankle Deep the owner added two dagger boards. Each dagger board was installed midship (Port Galley & Starboard Companionway) and the chases appear in the photos as built in cabinetry. These dagger boards are manually operated via deck line.

Ankle Deep has recorded speeds of 19 knts. in 34 MPH winds per the owner.

Additional

Barbacue Force 10 grill included.

Dingy with engine is available.

Excluded at the owner personal tools and dishware.

Basic Information

Category: Catamaran

Sub Category: Catamaran

Model Year: 1994

Year Built: 1994

Country: United States

Dimensions

LOA: 42' 0" (12.80m)

LWL: 38' 9" (11.81m)

Beam: 22' 8" (6.91m)

Min Draft: 2' 6" (0.76m)

Max Draft: 7' 0" (2.13m)

Clearance: 70' 0" (21.34m)

Speed, Capacities and Weight

Displacement: 16550 Pounds

Water Capacity: 65 Gallons

Holding Tank: 20 Gallons

Fuel Capacity: 80 Gallons

Accommodations

Total Cabins: 4

Hull and Deck Information

Hull Material: Fiberglass

Engine Information

Engines: 2

Manufacturer: Yanmar

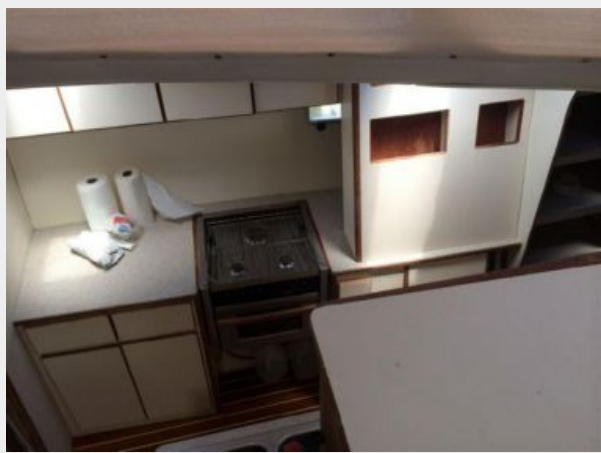
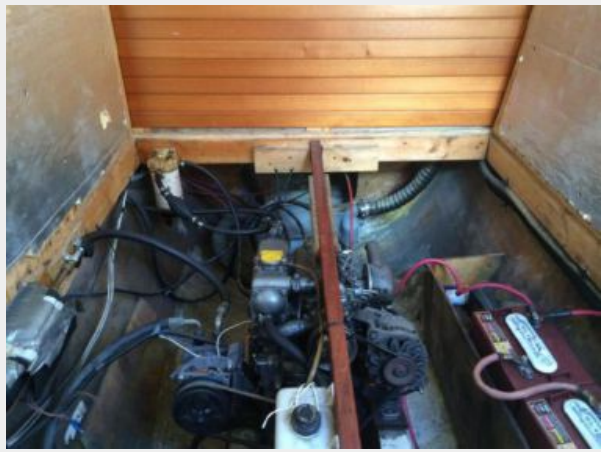
Model: 3GM30

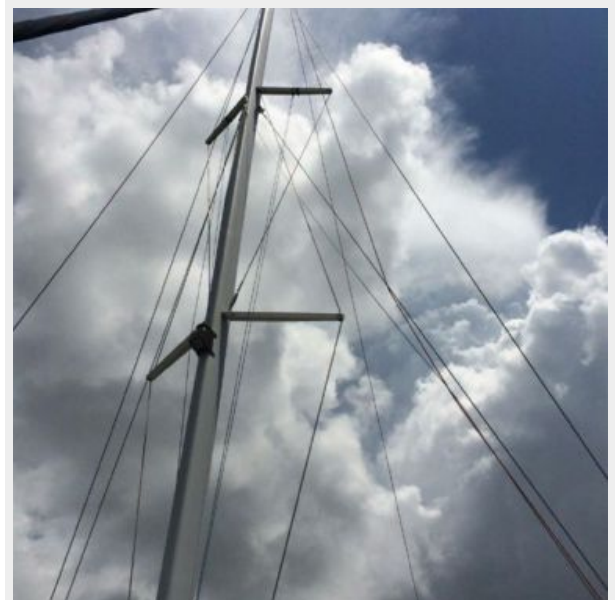
Engine Type: Inboard

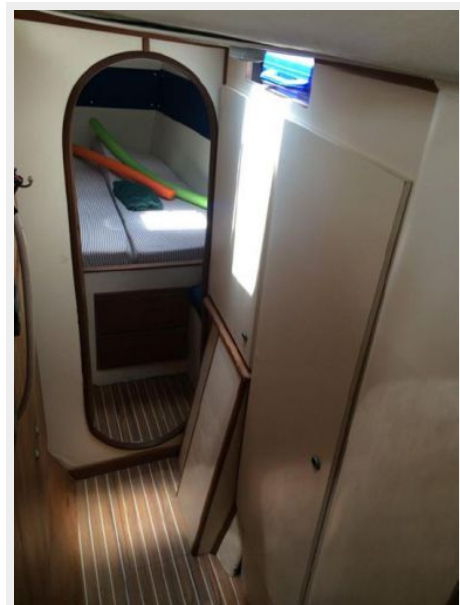
Fuel Type: Diesel

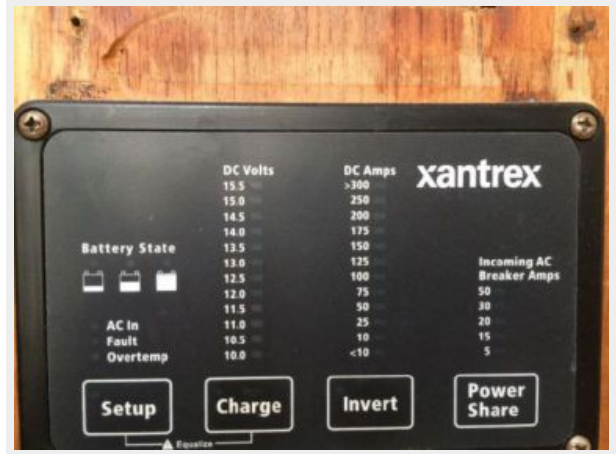
PHOTOS











CONTACTS

Andrey Shestakov, leading yacht broker of the sales department of Shestakov Yacht Sales Inc. Shestakov Yacht Sales Inc., the official representative of the Miami/Fort Lauderdale FL headquarters.

Contact details

Email: andrey@shestakovyachtsales.com

Web: shestakovyachtsales.com/en/

Telephones

USA: +1(954)274-4435

Office hours

Monday – Saturday: **9:00 - 21:00** EDT

Sunday: **closed**

Address



Harbour Towne Marina, 850 NE 3rd St,
STE 213, Dania, FL 33004