

FOREVER YOURS — HARGRAVE



Судостроитель: HARGRAVE

Год постройки: 2002

Модель: Моторная яхта

Цена: **ЦЕНА ЯХТЫ ПО ЗАПРОСУ**

Местонахождение: United States

Длина общая: 97' 0" (29.57m)

Ширина: 20' 0" (6.10m)

Макс. осадка: 6' 5" (1.96m)

Крейс. скорость: 16 Kts. (18 MPH)

Макс. скорость: 20 Kts. (23 MPH)

Купить **FOREVER YOURS — HARGRAVE** а также выбрать подходящую вам яхту из нашего каталога яхт вам поможет опытный яхтенный брокер Андрей Шестаков. На сегодняшний день компания **Shestakov Yacht Sales Inc.** имеет большое количество яхт в собственном списке продаж, а также тесно сотрудничает со всеми крупными яхтенными производителями по всему миру.

Для того чтобы купить яхту **FOREVER YOURS — HARGRAVE** а также проконсультироваться по любому вопросу связанному с покупкой, продажей, чартером яхт позвоните по телефону **+7(918)465-66-44**.

ОГЛАВЛЕНИЕ

ОГЛАВЛЕНИЕ	2
ХАРАКТЕРИСТИКИ	5
Обзор	5
Основная информация	5
Размеры	5
Скорость, вместимость и масса	5
Размещение	6
Корпус и палуба	6
Информация о двигателе	6
ПОДРОБНОЕ ОПИСАНИЕ	7
Introduction	7
Accommodations	7
Upgrades & Improvements	7
Aft Deck	9
Salon	9
Dining	10
Day Head	11
Galley	11
Pilothouse	12
Electronics & Navigational Equipment	12
Master Stateroom	13
Master Head	14
Laundry Area	14
VIP Stateroom	14
VIP Head	14
Guest Stateroom	15
Guest Head	15
Guest Stateroom / Twin & Pullman	15

Guest Head / Twin	15
Captain & Crew Quarters	16
Electrical System	16
Hull & Deck Equipment	16
Flybridge	17
Bow	17
Cockpit & Swim Platform	18
Safety, Fire & Emergency Equipment	18
Engine & Mechanical Equipment	18
Exclusions	19
Исключения	19
Отказ от ответственности	19
ФОТОГРАФИИ	21
Salon	21
Dining	21
Day Head	21
Galley	21
Dinette	22
Pilothouse	22
Master Stateroom	22
Master Head	22
Master Head	23
VIP Stateroom / Port	23
VIP Head / Port	23
VIP Stateroom / Starboard	23
VIP Head / Starboard	24
Guest Stateroom	24
Guest Head	24
Bow / Sun Pad	24

Flybridge	25
Flybridge / Helm	25
Flybridge / Seating	25
Flybridge / Facing Aft	25
Flybridge / Starboard	26
Freezer Cabinet	26
Walk-Around Deck / Starboard	26
Aft Deck / Storage	26
Rudder Access from Lazarette	26
Bosun's Locker	26
Engine Room / Forward to Starboard	27
Engine Room / Forward to Port	27
Aft View	27
Engine Room / Aft Port	27
КОНТАКТЫ	28
Контактная информация	28
Телефоны	28
Время работы	28
Адрес	28

ХАРАКТЕРИСТИКИ

Обзор

"Forever Yours" features accommodations for nine owners/guests in four staterooms, all with private en-suite heads + crew quarters aft.

Основная информация

Тип судна: Моторная яхта	Подкатегория: Кубрик
Модельный год: 2003	Год постройки: 2002
Страна: United States	Верх: 2363
Открытая палуба мостика: Да	Кубрик: Да

Размеры

Длина общая: 97' 0" (29.57m)	Ширина: 20' 0" (6.10m)
Макс. осадка: 6' 5" (1.96m)	

Скорость, вместимость и масса

Крейс. скорость: 16 Kts. (18 MPH)	Макс. скорость: 20 Kts. (23 MPH)
Вместимость воды: 600 Gallons	Вместимость сточного бака: 150 Gallons
Объем топливного бака: 2530 Gallons	

Размещение

Всего кают: 4

Спальные места: 9

Всего ком. состава: 6

Каюта капитана: Да

Каюты экипажа: 3

Койки экипажа: 3

Спальных мест экипажа: 4

Корпус и палуба

Материал корпуса: Fiberglass

Комплектация корпуса: Semi-Displacement

Информация о двигателе

Производитель: Caterpillar

Модель: 3412

Тип двигателя: Inboard

Тип топлива: Diesel

ПОДРОБНОЕ ОПИСАНИЕ

Introduction

“Preliminary Specifications”

“Forever Yours” offers a unique opportunity! A very nice 4 stateroom layout, which sleeps nine owners/guests + crew aft.

She features a contemporary elegant style, with a Cherry wood interior, with a satin finish. She has highly desirable, walk-around side decks and a large hardtop covering the Flybridge. She also offers a cockpit with easy access to the water and great storage for all the toys. **“Forever Yours”** has a good history as she was built as "Overbored", then sold to an owner in Naples, who also was a long-time boater and renamed her "Miss Conduct VI". In January 2005, she had approx. 900 hours; in November 2013 she had her 3000 hour service performed at 3400 hours.

Accommodations

“Forever Yours” is ready for cruising with her recent REFIT in 2012. Furnished with contemporary interior styling, using neutral tones and Cherry wood. She features four staterooms, plus Crew aft; walk-around decks, raised Pilothouse, open Flybridge with large hardtop, a Cockpit, underwater lights and an upgraded Galley with all new appliances. Her owner was meticulous and has a history of transforming his vessels into current turn-key boats.

This large 4 stateroom vessel accommodates 9 owners and guests, all with private en-suite heads; great interior with lots of outdoor space with an incredible Flybridge. Her profile has timeless classic lines.

Upgrades & Improvements

The vessel was painted in 2010 and a refit was completed in 2012. 2012 Refit:

- New interior and exterior LED lights throughout
- New refrigerator in Galley
- New GE Profile oven
- New GE Profile microwave above with steam capabilities
- New granite table in Galley
- New iPod docking stations
- Updated Wi-Fi throughout vessel
- Glendenning controls upgraded
- Aft Deck cushions re-upholstered
- Soft goods throughout boat

- Wall coverings throughout boat
- Designer Fabrica carpet throughout boat
- Interior LED overhead and walkway lights throughout boat
- Exterior LED overhead and walkway lights
- Added LED rope lighting
- All Vimar switches replaced
- All TV's throughout vessel
- Superb entertainment system
- Added LED lighting to name boards
- Replaced Aft Deck Teak decks
- Replaced Cockpit Teak decks
- Exterior paint 2010
- Re-varnished cap rails
- Marble flooring in Master Foyer
- Fabrica carpet throughout

The following are some of the upgrades and options when she was constructed, per the invoices dated 10/15/2002:

- Upgrade to Cruiseair Chiller Water System 165,000 BTU in lieu of standard
- Upgrade 20kW to 27.5kW Onan MDKAF with sound shield
- Add second 35kW Onan with sound shield
- Double insulation in Engine Room
- Add third layer of insulation to Master bulkhead
- Watertight bulkheads in Engine Room
- Naiad stabilizers model 302 with 9.0 Sq. Ft. fins and Multisea 2000 Control
- Sea Fire FE-1500M Fire Extinguisher System (2 sets)
- Reverso GP-706 oil change pump system engines and generators
- Oberdorfer Fuel Transfer Pump #990RHN76
- Double Racor filters for engines
- Install (2) Maxwell 4000VWC with 200' hi-tensile chain with anchor
- (2) Sets of Glendenning CM-8 Cable Master with 100' cord at transom
- Enlarge the wings by 18" for both sides at transom in order to install Glendenning CM-8 Cable Masters
- Jabsco Emergency Crash Clutch pump
- Delta-T Engine Room filters & Fans
- Pullman berth in port Guest cabin
- Shoji screens only for fwd. VIP Guest cabin
- Granite countertops and china bowls in bathrooms
- Granite countertop in Galley
- Granite floor in Master Bath
- Cherry & Anigre throughout the boat
- Tray ceiling in Salon with recessed lighting
- (8) Headhunter heads

- Vimar switches, outlets with (26) dimmer switches
- Sandam K-Pro insulation between crew wall and guest cabin
- Extra cost for doing 4" rub rails (Hardwood + 1/2 round)
- In-line recirculating "hot water" pump
- Raise 8" helm area + (1) additional helm seat
- Fabricate (1) freezer box
- Add (2) additional layers Vinylester resin for bottom shell
- Kahlenberg air horn
- Teak treads on the stairs have a lip over the end
- Galley pantry door to be smoke glass door
- 3" Crown molding #255 thru the boat excluding VIP, P/H as well as Galley
- Re-install electrical doors by air at Aft Deck
- Fabricate hardtop
- Add mast on top of radar
- Locker for boarding ladder
- Build (2) work benches above the gear boxes

Aft Deck

The Aft Deck has comfortable built-in seating with upholstered cushions. The Teak decks were redone in 2012, as was the Teak table top. To the starboard are fiberglass molded teak stairs leading up to the Flybridge. The Aft Deck gives you access to the port and starboard side walk-around decks to the bow, the Salon, the Flybridge, the Cockpit, the Engine Room and the Crew area.

- 32" Samsung TV
- Wood Aft Deck Teak table with stainless steel base (In/Out, Hi-Low)
- Teak decks
- Storage lockers
- Built-in seating with storage
- Refrigerator in built-in cabinet
- Storage cabinet
- Automatic glass sliding door to Salon
- Fiberglass and teak built-in stairs to Flybridge
- Built-in Teak stairs port and starboard side leading down to Cockpit
- (4) Overhead speakers

Salon

As you enter the salon from the Aft Deck through her large glass Pneumatic doors with sensor glide, there is an inviting feel with Cherry wood, taupe and pewter palette. To the port side is a sectional leather sofa and contemporary recliner. To the starboard are two swivel barrel chairs

and a pop-up TV. The Salon and Dining are open to each other separated by a low profile buffet.

- Cherry wood satin finish
- Designer carpeting
- Hunter Douglas pull-down shades
- Valances
- Granite top end table with lamp
- Artwork
- (1) Contemporary recliner in slate gray
- (2) Barrel chairs with
- Leather sectional sofa with built-in storage
- Ottoman with storage
- LED Overhead lights
- Overhead recessed mirror with contemporary fixture
- Built-in corner entertainment storage
- Pop-up TV cabinet
- Mini fridge in Salon buffet

Entertainment Equipment:

- Superb entertainment system throughout boat
- Samsung 46" LCD TV in Salon
- Denon integrated network AV receiver AVR-2312
- Samsung Blu-Ray disc player
- Sirius Radio
- Direct TV in each stateroom (Crew, Pilothouse and Galley are modulated)
- iPod docking stations

Dining

Moving forward from the Salon is the formal Dining room which becomes an extension of the Salon. The forward Dining bulkhead has a custom Cherry wood buffet with granite top, below is storage for fluted glasses. In the corner to the port side of the Dining there is a desk with new leather top and additional storage to the starboard is another long buffet. Over the dining table is a mirror with Burl wood frame and a light fixture. There is a pocket door to the starboard side offering privacy to the dining area from the Galley.

- Smoke glass oblong dining table with wood base, seating for eight
- (8) Upholstered dining chairs
- Designer carpet
- Cherry wood buffet storage with granite top
- Closet storage with shelves
- China storage
- Desk

- Hunter Douglas shades
- Refrigerator in cabinet

Day Head

Forward of the dining area to the starboard side is a day head with a walkway to the raised Pilothouse and forward of that is the large country Galley.

- Granite counter
- Decorative SS designer sink
- Upgraded fixtures
- Designer wall covering
- Mirror
- Marble floor
- Royal Flush Head Hunter head
- Wood cabinet base
- Overhead mirror
- LED Overhead light

Galley

The open country Galley features all new stainless steel appliances (2012), white cabinets and an island granite counter with storage and swivel-out bar stools. The dining table has booth seating with new upholstery and storage.

Appliances & Features:

- GE Profile Side-by-Side stainless Steel refrigerator with adjust temperature control, icemaker & water in door
- GE Profile stove and oven with convection
- GE Profile microwave
- Bosch Silence Plus 48DBA dishwasher
- Insta-Hot at sink
- Insinkerator food waste disposal extremely quiet
- Trash compactor
- Kitchen Aid toaster oven
- Wine cooler
- 26" Samsung TV in galley
- Storage forward
- (3) Swing-out counter stools
- Overhead LED lights
- Teak vinyl floor
- White cabinets

- Cherry wood walls
- Pantry with etched glass door
- Windows with valance and shades
- Granite countertop
- Granite galley dining table with stainless steel base
- Storage forward of Galley seating
- Kohler sink with fixture
- Soap dispenser
- Phone

Pilothouse

The Pilothouse stairs are on the starboard side aft of Galley. The instrument panel is Cherry wood with upholstered window panels. Aft of the helm station is a bench seat with table and a chart table with storage for ships manuals. Some of the features in this area are:

- (1) Stidd electric helm seat
- Navigation & camera modulated throughout boat
- Brother fax machine
- Designer carpeting
- Electronics console with leather wall
- Overhead LED lights
- Pull-down shades
- Upholstered bench seat with wood pedestal table
- Storage cabinets
- Ships manuals
- Stairs to Flybridge up through Plexiglass door

Electronics & Navigational Equipment

- (3) ACR searchlights with remote
- Led Spreader lights aft
- Navigation lights
- Docking lights (transom)
- (3) Monitoring rotating monitoring cameras aft
- (1) Engine Room monitoring camera
- Glendenning wing controls in protective acrylic boxes
- (2) Samsung Sync Master 912n LCD 18" Monitors
- Simrad RFC 35R exchange high performance flux gate
- Simrad AP20 w/ RPU 80 Autopilot 2nd station full function
- Furuno Radar FR 21115 black box 23kW, 6.5ft antenna
- Furuno NX300 Navtex computer system

- Furuno 1943 C Radar/ Plotter
- Furuno network, GPS antenna
- Northstar 941XD combo-mount at lower helm station
- (2) B & G HS 2000 depth finder full function display pack
- Elbex 4 color PTX system
- Nobel Tec Admiral 10 charts
- Brother color fax machine and printer interfaced to SATCOM
- Lilly stainless ratchet mount adjustable antenna mounting hardware (4)
- (4) Lilly basic stainless steel GPS mounts
- Concord hailer horn 40 watt with listen-back
- SATCOM & cellular and internet system
- Sat Phone: Seatel 2100R
- Panasonic 624 KSU phone system
- ICOM M710 RT 22 SSB radio, 16 ft. antenna
- ICOM at coupler auto tune for SSB radio
- VHF radio Standard spectrum at upper and lower helm stations, digital 8 ft. VHF antenna

Master Stateroom

Below and midship accessed down the stairs off the Dining is the Master Stateroom as well as two Guests Staterooms. The stairs are carpeted with LED step lights and overhead, a wood handrail and designer wall covering; which lead you to the beautiful marble foyer.

In the foyer are two storage closets and a stored stack GE Spacemaker washer and dryer (duplicate set in Crew area); recessed overhead mirror with wood design frame, a shelf with storage beneath.

- Double door entry
- His and hers closets
- King berth with storage drawers beneath and rope lighting
- Bose surround sound speakers with iPhone docking
- 32" Samsung TV
- Safe
- Bed cover, decorative throw pillows
- Upholstered headboard with overhead reading lights and decorative wood framing
- (2) Sconce lights over decorative Burl wood facing
- Built-in upholstered sofa
- Portlights with valance and sliding pull-back curtains
- Built-in drawer storage dresser with Burl wood top
- Designer wallpaper
- Built-in end tables with granite top
- GE Spacemaker stack washer & dryer (in foyer)

Master Head

- His and hers en-suite Heads with center shower
- Etched privacy glass for shower on port and starboard side
- Granite bench in shower with Teak shower grate
- (2) Sinks with granite countertop (1 port/1 stbd. side)
- (2) Royal Flush Headhunter heads (port & starboard)
- (2) Medicine cabinets with mirrors
- (2) Portlights with sliding designer pleated treatments
- Marble floor
- Towel racks

Laundry Area

- GE Spacemaker stackable washer & dryer (Master foyer closet)
- GE Spacemaker stackable washer & dryer (Crew area)

VIP Stateroom

Access to the VIP Stateroom is forward of the Galley stairs leading down using a wood handrail and carpeted stairs and Cherry wood walls.

- Queen Island berth
- LED Overhead light
- Bedcover, throw pillows
- Sliding Shoji screens
- Designer carpeting
- Back-lit built-in headboard
- 26" Samsung TV
- Phone

VIP Head

- Spacious, private head
- Royal Flush Head Hunter head
- Shower with handheld fixture
- Sink with granite top
- Vinyl Teak floor
- Towel racks
- Designer faucet
- Vinyl Teak floor

Guest Stateroom

- Queen berth
- Decorative bed cover and pillows
- Corner desk with ottoman seat
- 26" Samsung TV
- Pleated window treatments on sliding tracks & valance
- Portlights
- Designer carpet
- End tables with marble top
- Table lamp
- Dresser with drawers & large mirror
- Hanging locker

Guest Head

- Spacious, private head
- Royal Flush Head Hunter head
- Shower with handheld fixture
- Sink with granite top
- Vinyl Teak floor
- Towel racks
- Designer faucet
- Vinyl Teak floor

Guest Stateroom / Twin & Pullman

- Accommodations for three
- (2) Twin beds
- (1) Twin Pullman
- 22" LG TV
- Designer Carpet
- Designer wallpaper and Cherry wood walls
- Center table with marble top and mirror
- Bed covers, bed pillows

Guest Head / Twin

- Spacious private head
- Royal Flush Head Hunter head
- Shower with handheld fixture

- Sink with granite top
- Vinyl teak floor
- Towel racks
- Designer faucet

Captain & Crew Quarters

Captain and Crew cabins are located aft with access from the Cockpit Engine Room door. Captain has a double bed and private head, shower and sink. The cabin also has a hanging locker, TV, window treatments and bed covers, floor with carpeting.

(2) Crew cabins each have twin bunks, TV, bed covers, hanging locker, floor with carpeting and a shared head, shower and sink.

Electrical System

- 110V/220V AC Electrical system
- 12v/24v DC Electrical system
- 35kW Onan generator
- 27kW Onan generator
- (2) 100 Amp aft shore power receptacles on automatic reels
- (2) Smart-Y box
- Trace Inverter charger

Hull & Deck Equipment

- (6) Underwater lights aft
- (3) Underwater cameras
- Portable Passarelle
- Boarding stairs
- LED lights on name boards
- Bosun locker to port size (full-size/walk-in)
- LED Overhead and walkway lights
- Boarding locations: from port and starboard side door, port and starboard Aft Deck doors
- Fenders & lines
- Fresh & saltwater wash-down system
- Swim ladder
- Fenders and lines
- Quicklift davit 2000lb with rotation on Flybridge
- Removable chocks on Flybridge
- Marquipt boarding stairs with Teak hand rails

- Cap rail covers
- Interior runners
- Flybridge cushion covers
- Flybridge helm seat cover
- Bow seating covers
- Aft Deck cushion covers
- Sunpad cover for sunning pad

Flybridge

Up the stairs from the Pilothouse or Aft Deck is a large Flybridge deck with hardtop over the helm and seating area. Forward are three helm seats with a console that houses the electronics and wing stations. Aft of that are two large built-in seating areas to the port and starboard side with cushions, storage and tables. Moving aft again to the port side is an oversized freezer for additional provisioning and to the starboard is a sink, storage and BBQ grill and refrigerator. There are removable chocks and a davit further aft.

- Plexiglass door, down to Flybridge
- Teak stairs down to Aft Deck
- Helm station with electronics
- Upgraded Glendening electronic controls
- Fusion stereo with docking station compatible with iPhone and Ipad
- Port and starboard built in seating with storage and cushions
- Port and starboard fiberglass tables
- Non-skid fiberglass floor, stainless steel accents
- (3) Pompanette helm seats
- BBQ grill
- Oversized freezer
- Refrigerator
- Ice maker

Bow

The walk-around decks go all the way around the boat so moving around the boat for guests or dock is made easy. There are high bulwarks all the way around the boat; to the portside is a large Bosun locker. Forward to the Bow is a built-in seat with upholstered cushions and port and starboard large lockers. A custom sun pad was designed for the bow.

- Teak decking
- Bench seating with cushions and covers
- Raised sunning pad
- Storage lockers
- Teak cap rails with covers

- Ship's Bell
- Anchor windlass

Cockpit & Swim Platform

This is a generous space that lends itself to another gathering area while enjoying water sports. It can be easily accessed from the port or starboard stairs from the Aft Deck.

- Teak cap rails with covers
- Hatch storage
- Cockpit and Swim Platform Teak decks
- Hot and cold water shower
- Watertight Engine Room door
- Large Teak Swim Platform
- Large Teak Cockpit platform
- Removable stainless steel deck rails
- Portable Passarelle inserts

Safety, Fire & Emergency Equipment

- (2) SWITLIK 6-man life rafts on hardtop
- EPIRB
- FM-200 Sea-Fire fire extinguishing system

Engine & Mechanical Equipment

This is a large engine room with easy access to all equipment. Access is from the Cockpit, through a water-tight door.

- (2) Engines Caterpillar 3412, 1400hp
- (1) Onan Generator 27kW in sound shield
- (1) Onan Generators 35kW in sound shield
- Makita air compressor
- Raw water A/C pump
- 24V LED Engine Room lights
- Formica bulkhead covering
- Dolphin charger
- Engine Room batteries
- Dripless shaft seals
- Engine alarm
- Engine shut-off valve
- Hydraulic steering

- Reverse GP706 oil change pump system, engines
- (2) Fuel transfer pumps
- (2) Glendenning 100 amp cable master with 100' cord
- Jabsco emergency crash clutch pump
- Delta-T engine room filters and fans
- Royal Flush Head Hunter heads
- Headhunter waste treatment system: Tidal wave type II MSD
- Holding tank
- Air horn
- Cruise Air chilled Air-conditioning system (4) chillers
- NAIAD Hydraulic bow thruster (4 stations)
- Freshwater cooling system
- NAIAD Stabilizers Multisea 2000 model 302 stabilizers w/ 9.0 sf fins with controller 30x44 fins
- Engine synchronizer
- ZF transmissions
- Watermaker Sea Recovery Aqua Whisper SRC1500-2awm
- Emergency engine stop
- Fuel filters
- (6) Automatic & manual bilge pumps
- Double insulation in Engine Room
- (2) Torrid Marine hot water heaters (30gal & 40 gal)
- (2) Maxwell anchors with 300' chain
- (2) Maxwell VWC 3000 electric windlasses
- Quick Lift 2000lb. electric davit with rotation

Exclusions

The owners/crews belongings; there is no tender on this vessel. No Wave Runners, just chocks for Wave Runners. A detailed list of exclusions will be provided at the time of sale.

Исключения

При продаже яхты исключаются личные вещи владельца.

Отказ от ответственности

Компания предоставляет описание судна или яхты добросовестно, но не может гарантировать точность этой информации, а также не ручается за техническое состояние. Покупатель должен проинструктировать своих агентов или оценщиков исследовать представленную информацию более подробно, по собственному желанию. Продажа судна или яхты, изменение цены или снятие с продажи будет происходить без

предварительного уведомления.

ФОТОГРАФИИ

Salon



Dining



Day Head



Galley



Dinette



Pilothouse



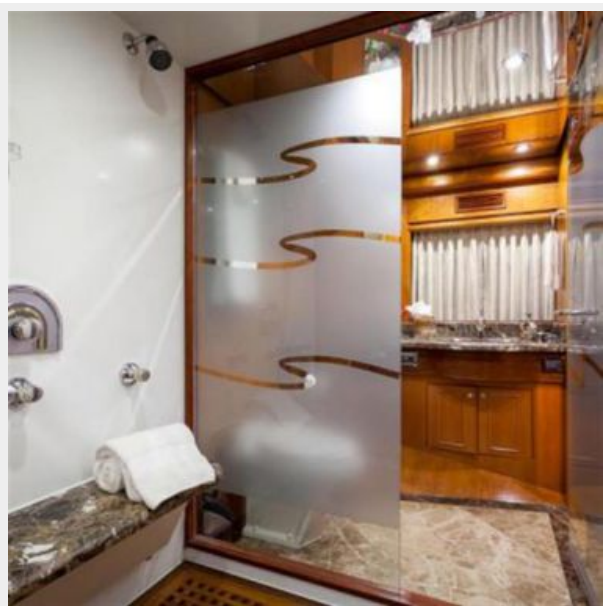
Master Stateroom



Master Head



Master Head



VIP Stateroom / Port



VIP Head / Port



VIP Stateroom / Starboard



VIP Head / Starboard



Guest Stateroom



Guest Head



Bow / Sun Pad



Flybridge



Flybridge / Helm



Flybridge / Seating



Flybridge / Facing Aft



Flybridge / Starboard



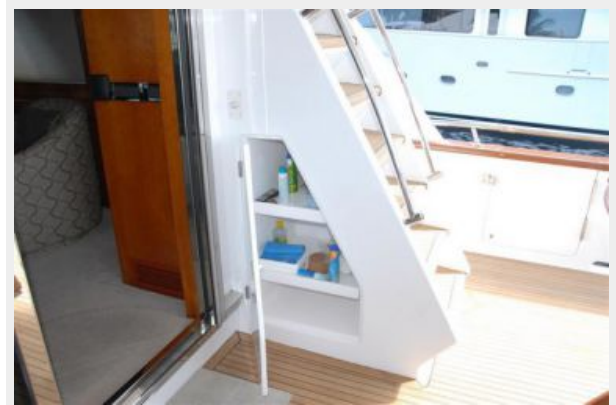
Freezer Cabinet



Walk-Around Deck / Starboard



Aft Deck / Storage



Rudder Access from Lazarette



Bosun's Locker



Engine Room / Forward to Starboard



Engine Room / Forward to Port



Aft View



Engine Room / Aft Port



КОНТАКТЫ

Андрей Шестаков (Andrey Shestakov) – ведущий яхтенный брокер отдела продаж яхт и судов компании Shestakov Yacht Sales Inc. Официальный представитель Shestakov Yacht Sales Inc. для русскоговорящих клиентов в центральном офисе компании в Майами/Форт Лодердейл/Флорида/США.

Контактная информация

Email: andrey@shestakovyachtsales.com

Web: shestakovyachtsales.com

Телефоны

Краснодарский край: **+7(918)465-66-44**

США, Майами, Флорида: **+1(954)274-4435**

Время работы

Понедельник – Суббота: **9:00 - 21:00**
EDT

Воскресенье: **Закрито**

Адрес



Harbour Towne Marina, 850 NE 3rd St,
STE 213, Dania, FL 33004