

TRIPLE A — CRAIG BLACKWELL



Builder: CRAIG BLACKWELL

Year Built: 2004

Model: Sport Fisherman

Price: PRICE ON APPLICATION

Location: United States

LOA: 61' 0" (18.59m)

Beam: 18' 0" (5.49m)

Min Draft: 4' 6" (1.37m)

Our experienced yacht broker, Andrey Shestakov, will help you choose and buy a yacht that best suits your needs Triple A — CRAIG BLACKWELL from our catalogue. Presently, at Shestakov Yacht Sales Inc., we have a wide variety of yachts available on our sale's list. We also work in close contact with all the big yacht manufacturers from all over the world.

If you would like to buy a yacht Triple A — CRAIG BLACKWELL or would like help answering any questions concerning purchasing, selling or chartering a yacht, please call +1(954)274-4435

TABLE OF CONTENTS

TABLE OF CONTENTS	2
SPECIFICATIONS	5
Basic Information	5
Dimensions	5
Speed, Capacities and Weight	5
Accommodations	5
Hull and Deck Information	5
Engine Information	5
DETAILED INFORMATION	6
Vessel Walkthrough	6
Salon	6
Entertainment Center	6
Galley	6
Companionway	7
Master Stateroom	7
Master Stateroom Head	7
Forward Stateroom	7
Guest Head, located to Starboard	8
Cockpit	8
Fishing Equipment	9
Flybridge	9
Electronics	9
Engine Room	10
Remarks	10
Exclusions	10
Disclaimer	10
PHOTOS	12
Salon	12

Salon	12
Salon	12
Salon	12
Salon	12
Salon	12
Salon	13
Galley	13
Galley	13
Galley	13
Companionway	13
Companionway Bunks	13
Master Stateroom	14
Master Stateroom	14
Master Stateroom	14
Master Stateroom	14
Master Stateroom Head	14
Master Stateroom Head	14
Forward Stateroom	15
Forward Stateroom	15
Forward Stateroom	15
Guest Head	15
Guest Head	15
Flybridge	15
Flybridge	16
Flybridge	16
Flybridge	16
Flybridge	16
Flybridge	16
Flybridge	16
Flybridge	16

Bow	17
Engine Room	17
Engine Room	17
Engine Room	17
Engine Room	17
Engine Room	17
Engine Room	18
Engine Room	18
Engine Room	18
Engine Room	18
Engine Room	18
Engine Room	18
Cockpit	18
Cockpit	19
Cockpit	19
Triple A	19
Triple A	19
Triple A	19
CONTACTS	20
Contact details	20
Telephones	20
Office hours	20
Address	20

SPECIFICATIONS

Basic Information

Category: Sport Fisherman

Sub Category: Convertible

Model Year: 2004

Year Built: 2004

Country: United States

Dimensions

LOA: 61' 0" (18.59m)

Beam: 18' 0" (5.49m)

Min Draft: 4' 6" (1.37m)

Speed, Capacities and Weight

Water Capacity: 150 Gallons

Fuel Capacity: 1200 Gallons

Accommodations

Total Cabins: 2

Hull and Deck Information

Hull Material: Fiberglass

Engine Information

Engines: 2

Manufacturer: Caterpillar

Model: C-18

Engine Type: Inboard

Fuel Type: Diesel

DETAILED INFORMATION

Vessel Walkthrough

As you enter the salon, to port is an L-shaped sofa and to starboard is the ship's main electrical panel as well as drawer storage credenza and additional sofa. The galley is low profile and located to port. Moving forward and below deck, guest/day head is to starboard. The oversized master stateroom is located to port with ensuite head. There are two companionway berths to starboard. The forward stateroom features a double berth to port and a single upper berth to starboard.

Salon

- L-shaped sofa to starboard with storage below
- Ship's electrical panel
- Teak credenza with drawer storage and Corian countertop
- Teak valances
- Window blinds
- Overhead lighting on dimmers
- Double salon entry doors
- MarineAir air conditioning

Entertainment Center

- Bose surround sound system
- Sony KDL-26M4000 flat screen TV, 2013
- Icom 502 VHF radio

Galley

- Low profile galley with undercounter refrigeration
- 2 Haier stainless refrigerators, 2013
- Molded Corian countertop with undermount sink
- Princess two burner flushmount cooktop
- Sharp Carousel microwave/convection oven
- Teak and holly sole
- Abundance of shelf storage above
- Teak 4 drawer credenza
- Window blinds
- MarineAir air conditioning

- Top loading freezer

Companionway

- Upper and lower berths to starboard
- Large storage area below lower berth
- Upper and lower reading lamps
- Tackle locker cabinet to starboard
- Upholstered shams & spreads
- Companionway steps lift to access storage

Master Stateroom

The Master Stateroom is located to port and features:

- Awthartship king bed
- Custom innerspring mattress
- End tables with drawer storage, either side of berth
- Hanging/storage lockers above end tables
- Upholstered head board
- His and her reading lamps
- Berth raises electrically to access storage below
- MarineAir air conditioning
- Stereo speakers with rheostat
- Sony 27" flat screen TV, 2013
- Upholstered shams and spreads

Master Stateroom Head

- Mirrored vanity above
- Teak credenza below
- Molded Corian countertop with undermount sink
- Linen closet
- Teak and holly sole
- Raritan electric freshwater head
- Stall shower
- One piece glass shower door
- Dimmable night light

Forward Stateroom

- VIP layout with double berth to port and single upper berth to starboard
- Mirrored forward bulkhead
- Storage below double berth
- Shelf storage below single berth
- Overhead hatch with shade
- Stereo speakers with rheostat
- Access to rope locker
- 3 drawer teak credenza
- MarineAir air conditioning system
- Upholstered shams & spreads

Guest Head, located to Starboard

- Mirrored medicine chest
- Teak credenza below
- Corian countertop with undermount sink
- Raritan electric head
- Teak and holly sole
- Stall shower
- Glass bi-folding shower door
- Dimmable night light

Cockpit

- Teak deck
- Teak covering boards
- Mezzanine bait boxes, stainless lined
- Bait freezer
- Cockpit controls
- Stainless lined Eskimo ice dump
- Stainless lined bait box
- Aluminum flybridge ladder with hatch
- Centerline cockpit engine room access hatch
- Transom door
- Transom fish box, stainless lined
- Port and starboard electric reel plugs
- Fresh and salt water washdown
- Teak fighting chair with rocket launcher
- Large cockpit overhang
- Stereo speakers
- Molded in lighting

Fishing Equipment

- Rupp triple spreader outriggers
- Rupp center rigger
- Teaser reels
- Transom fish box
- Teaser reels
- Eskimo ice machine

Flybridge

- Teak helm pod with single lever controls
- Hydraulic wheel steering
- Trolling valves
- CAT ECM's
- 3 sided enclosure
- Teak helm chairs with 4" pedestal
- Molded in white and red lights under hardtop
- Sub-electrical panel under helm
- Centerline compass
- 6 rod aft rail rocket launcher
- LED spreader lights
- Hatch over cockpit access
- ACR spotlight control
- Freshwater level gauge
- Uniden phone
- 12V plug
- Bennett trim tabs

Electronics

- Garmin GPS map 5212
- Garmin chirp transducer
- Furuno navnet VX-2 10.4 display and processor
- Furuno blackbox radar
- Furuno blackbox sounder
- Furuno GP-32 GPS navigator
- Furuno RD-30
- Furuno Navpilot autopilot
- Icom M602 VHF radio
- Uniden phone
- Sat TV system

- ICOM command mic back up VHF radio

Engine Room

- Twin Caterpillar C-18 1015HP engines with 2100 hours
- Northern Lights 16KW generator w/2195 hours
- Eskimo ice machine
- Charles battery charger
- Raritan hot water heater
- Oil change system
- Battery main engine disconnect
- Generator battery disconnect
- A/C D/C lighting
- Racor primary fuel filters
- Engine room exhaust fans
- Bennett trim tabs
- Fireboy system
- Fuel level gauges
- Dripless shaft seals
- High water alarm
- Alleyway to lazarette
- Rod racks

Remarks

Triple A is a one owner, never chartered, CAT powered, economical fishing machine. She features a two stateroom, two head, with two companionway berths layout. Her interior is very spacious and roomy with large bunks and oversized showers. She has had many upgrades and her dependable CAT C-18's cruise her at 29 knots. She has lived her entire life in the Outer Banks of North Carolina and enjoys having a very fishy reputation. She has great lines as well and lacks only a new owner to take her over. You will not be disappointed.

Exclusions

Owner's personal belongings.

Disclaimer

The Company offers the details of this vessel or yacht in good faith but cannot guarantee or warrant the accuracy of this information nor warrant the condition of the vessel. A buyer should instruct his representatives, agents, or his surveyors, to investigate such details as the buyer

desires validated. This vessel or yacht is offered subject to prior sale, price change, or withdrawal without notice.

PHOTOS

Salon



Salon



Salon



Salon



Salon



Salon



Salon



Galley



Galley



Galley



Companionway



Companionway Bunks



Master Stateroom



Master Stateroom



Master Stateroom



Master Stateroom



Master Stateroom Head



Master Stateroom Head



Forward Stateroom



Forward Stateroom



Forward Stateroom



Guest Head



Guest Head



Flybridge



Flybridge



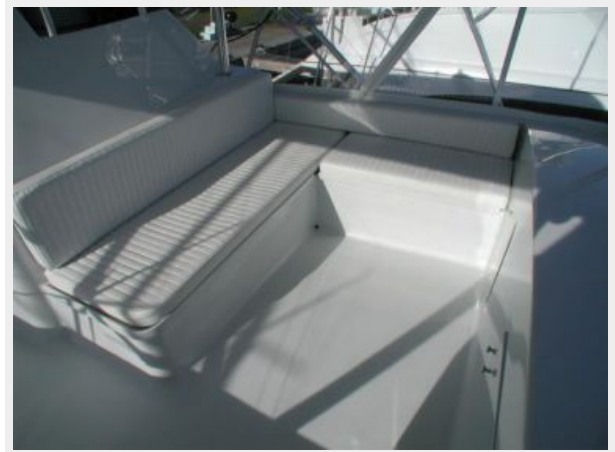
Flybridge



Flybridge



Flybridge



Flybridge



Flybridge



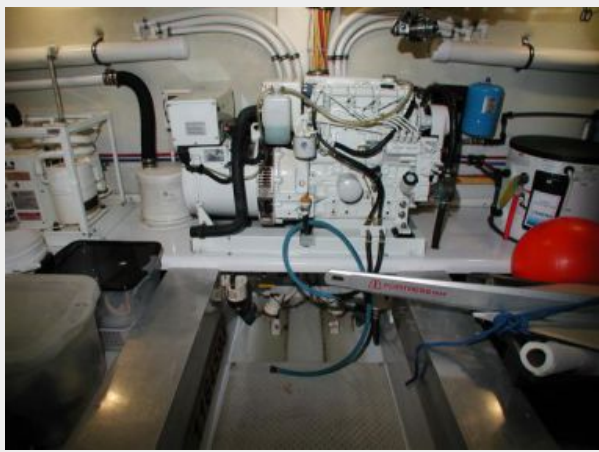
Bow



Engine Room



Engine Room



Engine Room



Engine Room



Engine Room



Engine Room



Engine Room



Engine Room



Engine Room



Engine Room



Cockpit



Cockpit



Cockpit



Triple A



Triple A



Triple A



CONTACTS

Andrey Shestakov, leading yacht broker of the sales department of Shestakov Yacht Sales Inc. Shestakov Yacht Sales Inc., the official representative of the Miami/Fort Lauderdale FL headquarters.

Contact details

Email: andrey@shestakovyachtsales.com

Web: shestakovyachtsales.com/en/

Telephones

USA: +1(954)274-4435

Office hours

Monday – Saturday: **9:00 - 21:00** EDT

Sunday: **closed**

Address



Harbour Towne Marina, 850 NE 3rd St,
STE 213, Dania, FL 33004